

Ganna
Walska



LOTUSLAND

NEWSLETTER | WINTER-SPRING 2025

The Water Issue

A Universal
Language

HOW TO WRITE PLANT NAMES

2025 Events

THE YEAR AT A GLANCE AT LOTUSLAND

PHOTO: LISA ROMEREIN

MESSAGE FROM THE CEO

Dear Lotusland Friends and Supporters,

Lotusland is a place with a deep and complex history—a landscape shaped by its most essential and defining resource: water. Long before us, the native Chumash people who inhabited this area of Montecito understood water is the essence of life itself—the source of food, plants, and community vitality.

Ganna Walska's vision for Lotusland reflects this timeless understanding. Like the Chumash, who cultivated and respected this ecosystem, she created a sanctuary where both nature and culture could thrive. Today, we continue this legacy of stewardship, honoring the wisdom of those who came before while embracing our role as caretakers of this extraordinary garden and property.



This chapter in Lotusland's story is defined by a commitment to preserving biodiversity, deepening ecological awareness, and celebrating the heritage of this land—from its earliest inhabitants to its present-day stewards. The Cold Spring waterway, which has flowed through this neighborhood for generations, carries with it the enduring stories of the past and the promise of a sustainable future.

Thanks to your generosity, Lotusland continues to thrive as a center for horticulture and a beacon of natural beauty. Your support ensures this remarkable garden remains a source of inspiration and connection. Together, we are cultivating not only a garden but a shared commitment to preserving the natural resources and plant life that sustain us all.

With respect and gratitude,

Rebecca Anderson

Rebecca Anderson
Chief Executive Officer
randerson@lotusland.org

P.S. As we go to print, members and neighbors in Los Angeles are rebuilding lives devastated by the recent wildfires. On February 1st and 2nd we opened the Garden for special access days, generously supported by members of our Board of Trustees, to provide a place of calm and reflection for those impacted. We continue to encourage everyone to spend time in the Garden and find comfort in its beauty during challenging times.



LOTUSLAND'S MISSION IS TO PRESERVE AND ENHANCE THE DISTINCTIVE BOTANICAL GARDENS AND ESTATE OF MADAME GANNA WALSKA. LOTUSLAND EDUCATES AND INSPIRES VISITORS WITH ITS COLLECTIONS, SUSTAINABLE HORTICULTURE PRACTICES, AND PLANT CONSERVATION.



695 Ashley Road
Santa Barbara, California 93108
805.969.3767 | lotusland.org

BOARD OF TRUSTEES

- Mari Mitchel, President
Jeffrey F. Romano, Co-Vice President
Crystal Wyatt, Co-Vice President
Mark Schmidt, Treasurer
Elizabeth Patterson, Secretary
David M. Jones, Immediate Past President
Ashley Adelson
Jeanne Anderson
Laura Bridley
Merryl Brown
Ron Caird
Geoff Crane
Susie Read Cronin
Rachael Douglas
Anthony Grumbine
Joseph Marek
Connie Flowers Percy
Stephen Schaible
Amy Steinfeld
Wendy Schmidt
Lisa Wolf

EX OFFICIO MEMBER

Daniel Bifano

LIFETIME HONORARY TRUSTEES

- Merryl Brown
Robert Emmons
Arthur R. Gaudi
Kisa Heyer
Connie Flowers Percy

DIRECTOR EMERITUS

Steven Timbrook, Ph.D.

STAFF

- Rebecca Anderson
Chief Executive Officer
Fiona Brennen
Director of Finance
Tyler Diehl
Director of Gardens and Grounds
Paul Mills
Director of Conservation and Curator of the Living Collection
Adam Flint
Director of Operations
Patricia Sadeghian
Director of Development
Courtney Tentler
Director of Administration
Katherine Colin
Director of Marketing and Communications
Ed Soto
Director of Visitor Services and Public Programs
Printed by Jano Graphics

FROM THE DESK OF THE BOARD PRESIDENT

As we emerge from our annual winter hiatus and reopen the Garden, I find myself reflecting on early encounters with Lotusland. Do you recall your first experiences in the Garden? With time, specifics of memory fade, though my sense of wonder deepens.



I recently took my sister for a visit. She knew nothing of Lotusland until we meandered through the gardens on a docent-guided stroll, gathering stories about the plant collections, Ganna, architecture, and the estate's history. I watched her entire visage engage, as her curiosity piqued and her spirit nurtured. Seeing the Garden through her eyes brought me back to my own early experiences of awe and discovery. The magic of Lotusland feeds our senses as well as our minds, touching us to the core. In this new season, I invite you to return with a guest who is seeing the Garden with fresh eyes. Perhaps you, too, will get a taste of that sweet moment of rediscovery.

Over the past two years, our Board of Trustees has been led by David Jones. He guided us with generosity, dedication to staff and volunteers, deft decision-making, and a steady presence. I am deeply grateful for his leadership, though admittedly daunted in attempting to fill his shoes as Board

President. David will remain on the Board's Executive Committee as Immediate Past President, along with Crystal Wyatt and Jeffrey F. Romano (Co-Vice Presidents), Mark Schmidt (Treasurer), and Elizabeth Patterson (Secretary).

It is never easy to say farewell, but following many years of service, Caroline Thompson and Rick Vitelle will depart our Board. Their commitment to Lotusland continues with Caroline as Chair of the Architectural Advisory Ad-Hoc Committee, and Rick as a member of the Plant Collections Committee. Additionally, we welcome Amy Steinfeld to the Board.

As we continue our efforts to secure Lotusland's future, the Lotusland Forever Campaign represents a pivotal step. The much-anticipated capstone event, to be completed this year, will help ensure the Garden endures as a place of inspiration for generations to come.

Thank you for your unflagging support. I'll look for you in the Garden, perhaps with a guest in tow.

Sincerely,

Mari Mitchel

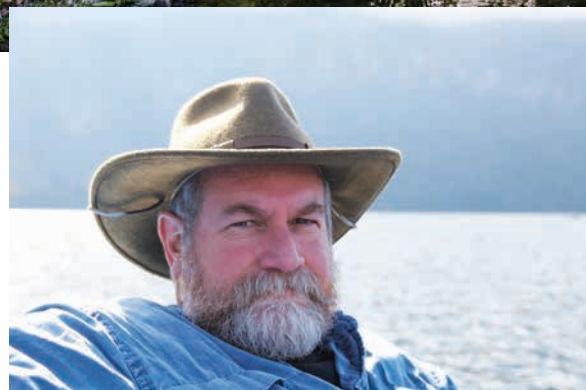
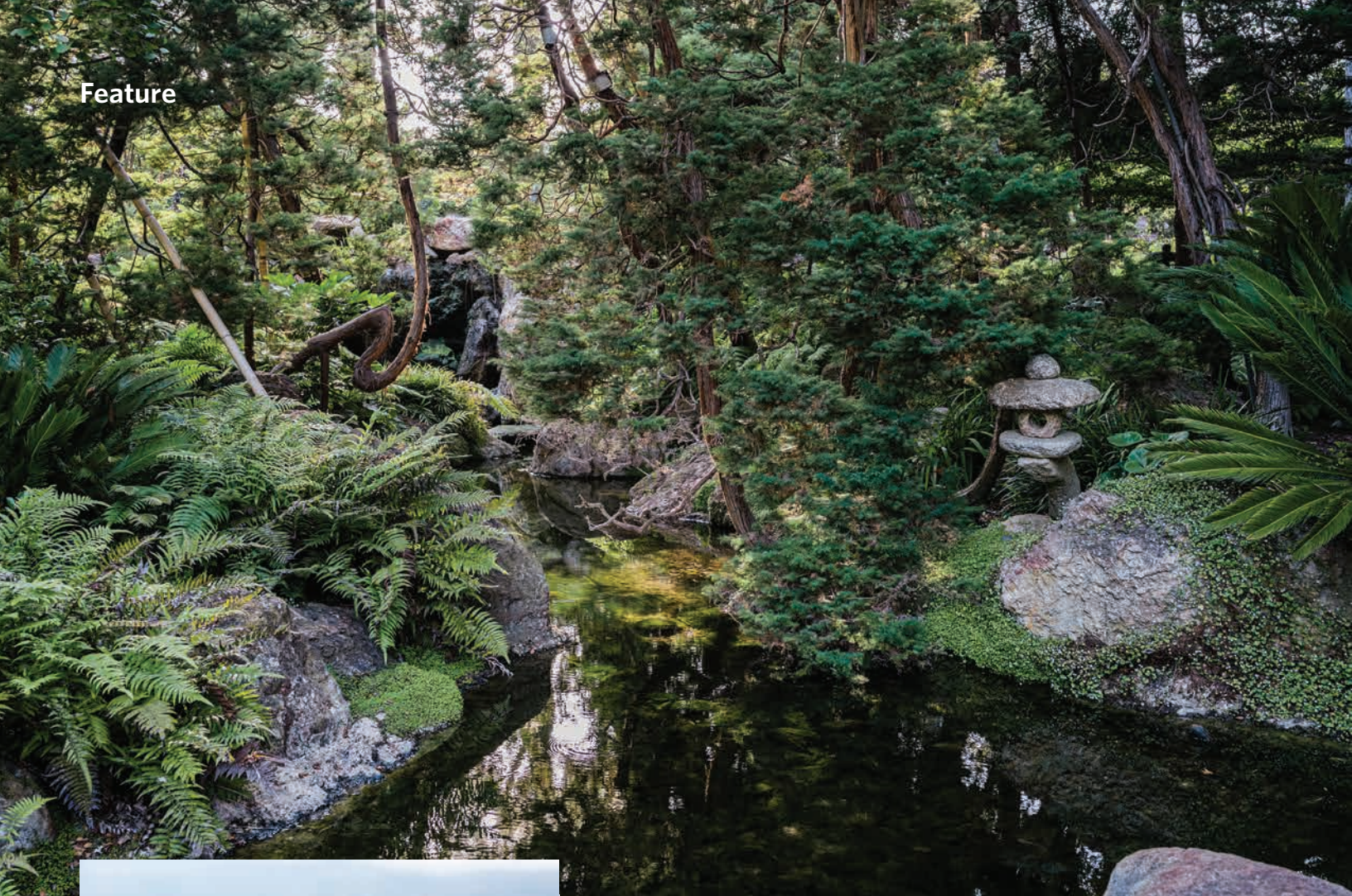
Mari Mitchel, President
Board of Trustees

CONTENTS

- 4 Feature
7 Sustainability
8 Collections
10 Horticultural Happenings
12 Events Calendar
14 Lotusland Forever
16 Benefit Events
18 Membership
19 Enhanced Tours and Patio Events
20 Donor Recognition
21 Wishlist



Horticultural Happenings Page 10



Dr. Robert C. Wilkinson is a Professor Emeritus at UCSB's Bren School of Environmental Science and Management and a leading expert in water, energy, and climate policy. He has advised state and federal agencies, including the California Department of Water Resources, California Energy Commission, the U.S. EPA, and the White House Office of Science and Technology Policy. His work reflects both local expertise and national leadership in advancing sustainable water and climate initiatives.

A BLUEPRINT FOR WATER RESILIENCE:

Lotusland's Sustainable Future

As part of its broader Master Plan focusing on resilience and sustainability in Southern California's drought-prone climate, Lotusland is advancing a comprehensive water management initiative. Visitors may notice work projects underway in the Garden, planned to minimize disruption while laying the groundwork for long-term solutions. To delve deeper into these efforts, we invited Dr. Robert Wilkinson, a renowned authority on water policy and sustainability, to tour the property. Dr. Wilkinson shared his insights on the challenges and opportunities in creating innovative water systems, as well as their larger implications for climate resilience and resource management.

A Master Plan Rooted in Innovation

Lotusland's water management project began with an extensive water study, exploring diverse approaches to improve resilience and reduce dependence on public water supplies. This included examining Indigenous practices for managing water and fostering water-resilient landscapes, alongside cutting-edge modern technologies. These insights helped shape a multi-phase plan for long-term sustainability.

The first phase includes the construction of bioretention basins and a stormwater catchment reservoir. These systems are designed to capture stormwater runoff, improve water quality, enhance aquifer recharge, and replace failing infrastructure dating back more than century. The installation of these state-of-the-art resources mark an historic milestone for Lotusland, allowing the Garden to harvest rainwater and store it on-site for the first time in its history. By reducing reliance on Montecito's municipal water supply, this infrastructure not only benefits the Garden's sustainability but also eases the strain on local resources.

Q&A with Dr. Robert Wilkinson

Q: What do you see as the most pressing water management challenges in Santa Barbara and California more broadly?

Climate change is a major challenge, increasing variability—our "wets" are wetter, and our "drys" are drier. Traditional water management practices are no longer sufficient. In many areas, we're also overusing water, creating environmental and financial stress. Projects like Lotusland's, which model efficient and innovative water use, are critical in addressing these challenges.

Q: How does this project align with global water management issues?

California is uniquely positioned as a global leader in water management and



innovation. Projects like Lotusland's not only solve local issues but also serve as models for drought-prone regions worldwide. The ability to test, refine, and demonstrate new technologies and approaches here means they can be replicated elsewhere, even in areas without similar resources.

Q: How does touring a botanical garden like Lotusland compare to your other work?

My work often focuses on large-scale policy and planning, but projects like Lotusland bring those concepts to life. Here, you're balancing the needs of diverse ecosystems—wetlands, dry areas, and ponds—while modeling innovative approaches to water capture and reuse. It's inspiring to see these principles applied in such a meaningful way, especially in a public garden that can educate and inspire others.

Q: How do Lotusland's efforts benefit the broader community?

By reducing its reliance on Montecito's municipal water supply, Lotusland helps ensure limited water resources remain available for other community uses. Capturing runoff and recharging the aquifer benefits the entire watershed, improving groundwater levels and water

quality. These efforts also position Lotusland as a model for sustainable resource management.

Q: What can home gardeners learn from Lotusland's approach?

Home gardeners can adopt many of these practices. For example, improving soil health through composting and mulching increases water retention and reduces irrigation needs. Capturing rainwater or runoff for reuse is another impactful strategy. These scalable techniques benefit not just individual gardens but also the broader community.

Q: How do these initiatives reflect Lotusland's broader sustainability goals?

Lotusland's efforts integrate water management with soil health and biodiversity conservation. Practices like composting not only improve water retention but also reduce the Garden's carbon footprint. By combining these approaches, Lotusland demonstrates how sustainable practices in one area can create ripple effects across the environment.

(Continued on page 6)

(Continued from page 5)

What's Next?

Lotusland's commitment extends from its leadership to its talented design team. Rebecca Anderson, Chief Executive Officer, notes: "Lotusland's Board and staff are dedicated to ensuring sustainability is at the heart of our mission. These water management initiatives reflect the Garden's responsibility to lead by example in our region where water is precious."

This vision is supported by the expertise of Arcadia Studio and Flowers & Associates, who have been instrumental in designing this project. According to Kaile Grubb of Arcadia Studio:

"Designing a water management system for a garden as diverse as Lotusland was both a challenge and an opportunity. The bioretention basins and other infrastructure not only support the garden's current needs but also position



"These water management initiatives reflect the Garden's responsibility to lead by example in our region where water is precious."

**—Rebecca Anderson,
Lotusland Chief Executive Officer**

it for the future."

Robert Schmidt of Flowers & Associates adds: "From a civil engineering perspective, capturing and treating road runoff and reuse of the stormwater for irrigation meets the state regional water board objectives and is a game-changer for the region. This is a great approach that also helps replenish the local ground

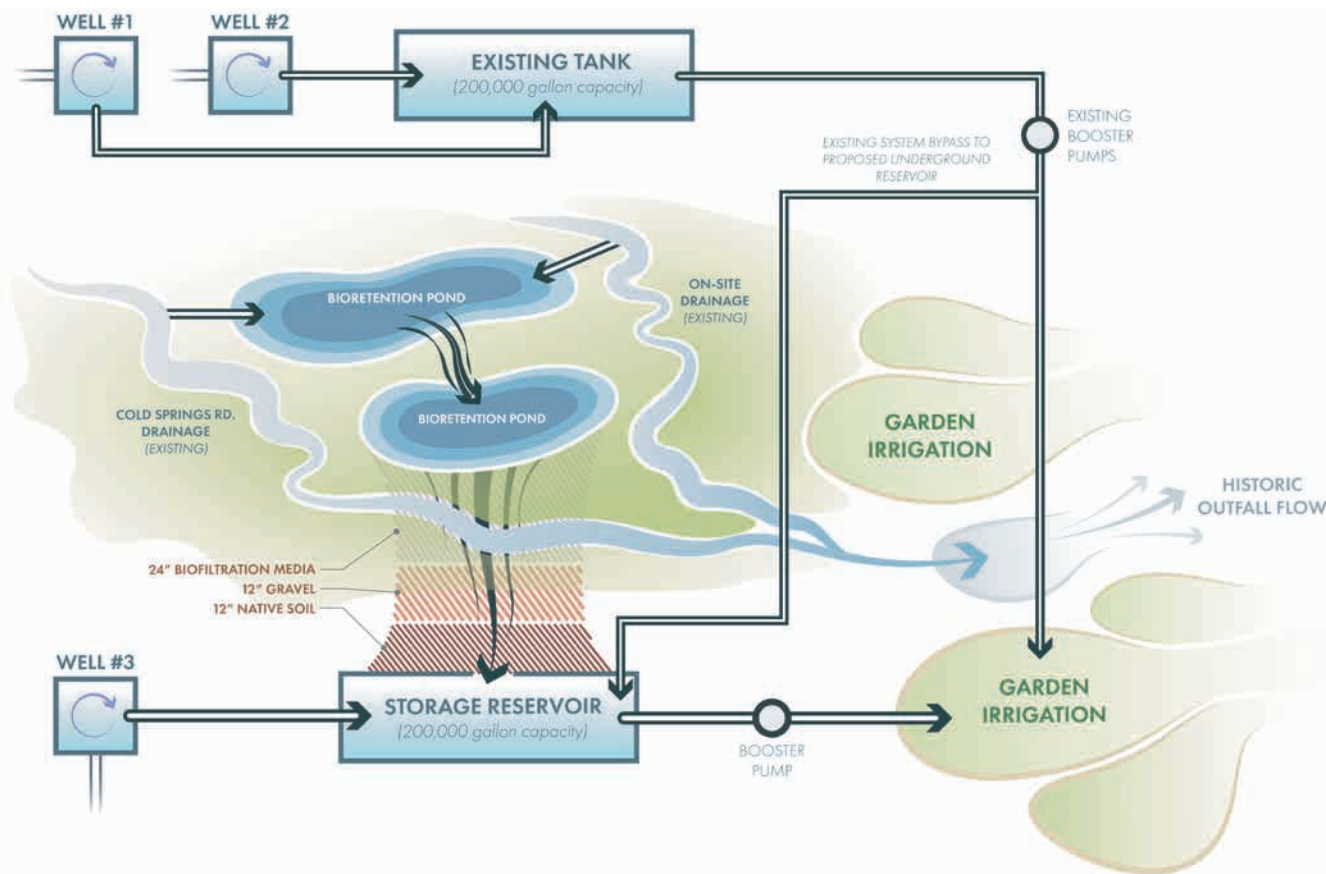
water in the long run."

Lotusland's water management project represents a pioneering approach to sustainability. By integrating runoff capture, aquifer recharge, and innovative infrastructure, we are addressing both immediate water needs and long-term resilience. These efforts support Lotusland's role as a leader in sustainable horticulture, showing how ornamental gardens—featuring some of the world's most threatened plants—can thrive through forward-thinking design and conservation practices.

Through programs, tours, and educational initiatives, Lotusland aims to share these innovations, encouraging sustainable practices that benefit gardens, communities, and the planet.

For more information, to take part in upcoming educational opportunities, or to support these initiatives, please contact development@lotusland.org

Water Management Diagram



Introducing Lotusland's Sustainability Website

Lotusland is thrilled to unveil our new mini-website dedicated to sustainability—a cornerstone of our mission for over 25 years. This resource highlights the four pillars of our approach: understanding horticultural requirements, building healthy soils, fostering habitat, and eliminating harmful practices.

The site features our innovative practices, including compost tea application, sustainable water management, the role of pollinator plants, along with tips and tricks for home gardeners. We spotlight methods for supporting native and ornamental species, including plants that are threatened in their native habitats, while promoting soil health as the foundation of every flourishing garden.

You'll also find information about partnerships, talks, tours, and educational initiatives, all designed to inspire and support a transition to more sustainable gardening practices that foster biodiversity.

lotusland.org/sustainability



Promoting Water-Wise Gardens with Lotusland

Lotusland is proud to partner with Santa Barbara County's WaterWise program and the Green Gardener program to champion sustainable water practices in our community. Together, we're inspiring resilient, water-efficient gardens that thrive in harmony with our environment.

If you're a dedicated gardener or landscape professional committed to conserving water, consider applying for the Green Gardener Recognition Contest. This program celebrates those who prioritize sustainable practices,

from efficient irrigation techniques to drought-tolerant landscaping. Showcase your work and help inspire others to join the effort toward a greener future.

Find more details and application openings at WaterWiseSB.org. This initiative is part of Lotusland's ongoing commitment to water stewardship.

Let's work together to create gardens that not only thrive but also preserve our precious resources for generations to come. **Visit the WaterWise website to learn more and join this meaningful movement!**



A Universal Language

By Paul Mills, Director of Conservation and Curator of the Living Collection

In the mid-18th century, Carl Linnaeus—a doctor, scientist, and professor—recognized the need for an organized, hierarchical system to make sense of the biodiversity around us. Known today as “The Father of Taxonomy,” Linnaeus revolutionized the field of taxonomy and transformed how we communicate about biological organisms, particularly plants. He developed binomial nomenclature, a two-name system that assigns every species a unique identifier consisting of a genus and a specific epithet (see page 9). Linnaeus described more than 12,000 species of plants and animals,

and his system enables universal communication, regardless of language or location.

Before Linnaeus’ innovation, there was no convenient way to describe distinct organisms without relying on lengthy and cumbersome Latin descriptions. For instance, a species of *Aloe* commonly referred to as the spiny aloe was once described as *Aloe Africana caulescens, foliis minus glaucis caulem aplectentibus, dorsi parte superiore spinosa*. Today, it is simply called *Aloe africana*, though it underwent ten different names in the intervening years. Similarly, the fan aloe



The fan aloe has had ten different names and is currently called *Kumara plicatilis*.



Display labels at Lotusland include the plant family, scientific and common name, and nativity.

was once described as *Aloe Africana arborescens montana non spinosa folio longissima, plicatili, flore rubro*. Thanks to the binomial system, this species is now more succinctly identified as *Aloe plicatilis*. However, even this name has changed with advancements in taxonomy. The genus *Aloe* has been split into six distinct genera, and *Aloe plicatilis* has been reclassified as *Kumara plicatilis*, one of two species now found in the genus *Kumara*.

The story of plant taxonomy and nomenclature is one of continual evolution. As scientific understanding grows, so does our grasp of Earth’s biodiversity and its intricate relationships. Despite centuries of progress, our comprehension of the natural world remains a work in progress, propelled by new methodologies and technologies.

At Lotusland, Linnaeus’ enduring legacy is evident in the plant display labels throughout the Garden. These labels provide essential information, including a plant’s scientific name, common name, family, and place of origin. They serve as an invaluable resource for deepening our understanding and appreciation of the plants that surround us.

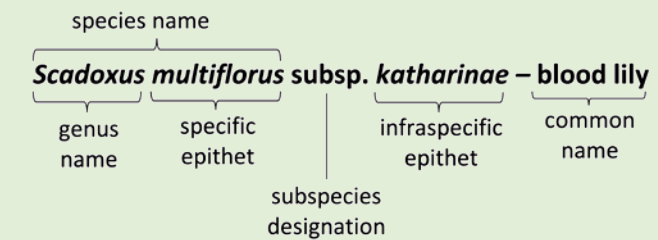
HOW TO WRITE PLANT NAMES

By Anna Bower, Assistant Curator of Living Collections

The examples below highlight the proper format for printing scientific, cultivar, and common plant names at Ganna Walska Lotusland. This guide serves as a brief introduction and is not fully comprehensive. For more detailed information, refer to the resources outlined below.

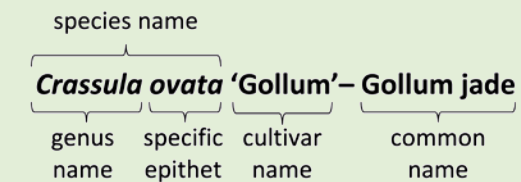
Scientific Names

- Scientific names are governed by the *International Code of Nomenclature for algae, fungi, and plants*.
- A plant’s scientific name consists of two parts: its generic name (the name of the genus) and its specific epithet, forming the binomial name of a species. Species names are always printed in italics.
- The generic name always begins with a capital letter, while the specific epithet always starts with a lowercase letter.
- In some cases, an infraspecific epithet may appear below the species rank: subspecies (ssp. or subsp.), variety (var.), or forma (f.). These abbreviations are printed in non-italics, while the infraspecific epithet is printed in italics. A plant name including an infraspecific epithet is called a trinomial.



Cultivar Names

- The term “cultivar” (a contraction of “cultivated variety”) refers to variants selected, derived, and maintained through cultivation. Cultivar names are governed by the *International Code of Nomenclature for Cultivated Plants*.
- Cultivar names are not italicized but are placed in single quotation marks. Each word in a cultivar name begins with a capital letter, except for conjunctions and prepositions.



Common Names

- There are no official rules for common names. At Lotusland, common names are only capitalized if they include a proper noun.
- Cultivar name capitalization applies within a common name, while family common names are written in lowercase.
- Black display labels in the Garden list common names in all capital letters.

Resources for Further Reading

- The Code Decoded: A User’s Guide to the International Code of Nomenclature for Algae, Fungi, and Plants* (2019), Nicolas Turland.
- Recommended Style for Printing Plant Names* (2004), Royal Horticultural Society Botany Advisory Services.

Lotusland Goes Electric:

TRANSITION TO ELECTRIC LANDSCAPING & TRANSPORTATION EQUIPMENT UNDERWAY

Lotusland is proud to be part of the **Climate Toolkit initiative**, joining over 200 institutions from 25 countries that collectively serve more than 100 million visitors annually. The Climate Toolkit was started by Phipps Conservatory in 2020 as a collaborative opportunity for museums, gardens, and zoos to aggressively address climate change within their own organizations and inspire the communities they serve to follow their lead.

As a key initiative in this consortium, Lotusland is advancing sustainability through our transition to electric landscaping equipment and vehicles. With a \$7,500 grant from the City of Santa

Barbara's LEEF (Landscape Equipment Electrification Fund) program received in 2024, we've replaced gas-powered tools with electric alternatives, including a string-line trimmer, pole-hedge trimmer, riding lawnmower, and a suite of batteries and chargers. As a requirement of the grant, the gas-powered equipment that has been replaced was destroyed, ensuring it was permanently removed from circulation, thereby reducing emissions.

Currently, 50% of Lotusland's landscaping equipment is electric, including key tools that help maintain the Garden. We are committed to transitioning fully to electric equipment and are actively monitoring

advancements in technology to facilitate this shift by 2030.

Lotusland staff use 10 fully electric carts onsite, dedicated to horticultural tasks and visitor transportation, particularly for guests with reduced mobility. Two of our carts are due for replacement to maintain efficiency and reliability. Switching to an all-electric fleet will reduce emissions, promote energy efficiency, and maintain quiet operations to help minimize noise pollution in our residential area and natural environment. In addition, our goal is to power these carts with renewable energy for more cost-effective operation.

To support these transitions, we must upgrade our electrical capacity and invest in solar and charging infrastructure. These are all elements of Lotusland's newly adopted Master Plan to create a green campus and address climate change by shifting away from fossil fuel use to renewables.

These efforts reflect our commitment to reducing emissions, lowering noise pollution, and fostering a sustainable future. **To support this initiative or learn more about our work, please contact the development office at 805.969.3767.** Together, we will advance Lotusland's switch to an all-electric future.



"Converting our fleet and electrifying our landscaping equipment is an easy step with a big impact for climate change."

—Tyler Diehl, Director of Gardens and Grounds



Tim Cordero, Lotusland Assistant Ground Supervisor, mows the Great Lawn with the EGO brand mower.

Fostering Future Horticulturists

LOTUSLAND & SANTA BARBARA CITY COLLEGE

Lotusland's partnership with **Santa Barbara City College (SBCC)** offers Environmental Horticulture students like Laura Cogan a rare opportunity to gain hands-on experience in sustainable horticulture. Supported by individual and foundation donors, this program prepares students for a vocation in horticulture. The Environmental Horticulture internship teaches the basic

skills and provides information required to develop a strong foundation for a variety of career specialties within the landscaping, ornamental horticulture, and the regenerative and restoration industry. Lotusland's internship program teaches professional standards, a strong work ethic, and environmentally sound management practices.

Laura joined the program with a passion for environmental stewardship and left with valuable skills and knowledge to shape her career. From learning to analyze soil health to mastering organic pest management, her experience reflects Lotusland's emphasis of sustainability in action.

We asked Laura to share more about her time at Lotusland:

What did you find most surprising about working at Lotusland?
Something that really stood out was the integration of sustainable practices into every aspect of garden care. For example, seeing the role compost tea plays in soil health and how it impacts plant vitality was eye-opening.

What skills or insights will you take with you into your future career?
I learned how to assess soil health holistically and gained hands-on experience in organic pest management. These skills will be invaluable as I pursue a career in sustainable landscape design.

How did this internship deepen your understanding of sustainability?
I realized that sustainability isn't just about using fewer resources but about creating balanced systems. For example, we learned how to use beneficial insects to naturally manage pests, which was a game-changer for me.

What message would you share with donors who support Internships at Lotusland?
Their contributions don't just fund internships; they invest in the future of horticulture. Programs like this are shaping a generation of professionals who will prioritize sustainability and biodiversity.



2024 SBCC Environmental Horticulture Intern, Laura Cogan.

PHOTO: COURTESY LAURA COGAN

2025 Upcoming Events

Purchase tickets and reserve your space at lotusland.org/events



WELL-BEING WEDNESDAY SERIES

This series offers unique experiences promoting a deeper connection to nature and its restorative power.

- Wed 2/26 Forest Bathing** with Elena Rios, ANFT Certified Nature & Forest Therapy Guide
- Wed 3/26 Active Stretching** with Kat Connors-Longo, E-RYT 500, C-IAYT certified yoga therapist
- Wed 4/23 Sound Bath** by Grayceland Healing with Kimberly Marciano, Master's Certification in Energy Medicine
- Wed 5/21 Reiki** with Lilian Kuosaka, Reiki Master, Biosynthesis Somatic Therapist/Trainer
- Wed 6/18 Japanese Sound Meditation** with Fabio Rambelli, UCSB professor of Japanese religions



MEMBERS ONLY EVENTS

- Thu 3/13 Behind-the-Scenes Tour: Japanese Garden**
Join expert staff for an insider's look at the horticultural mastery behind its design.
- Fri 4/4 Member's Golden Hour Wine Walk**
Taste local wines while enjoying a leisurely stroll through the gardens. Featured winery: Future Perfect Wines.



ATELIERS & WORKSHOPS

Learn from experts and with a selection of workshops and special talks.

- Sat 3/22 Spring Equinox Floral Design & Meditation Workshop**
Explore the artistry and energy of flowers with floral artist Louesa Roebuck and holistic healer Dina Saalisi. Enjoy an afternoon of flower festivities with exhilarating floral creations, reflective oracle insights, and more.
- Sat 4/12 Compost Tea Party**
Learn the fundamentals of soil health and compost tea brewing with Lotusland Sustainability Manager, Chris Ziliotto and special guest Dr. David White, the Soil Doctor.
- Fri 5/2 Santa Barbara Museum of Art, Artist Atelier**
Inspired by the Museum's current exhibition and the open air of the Garden, get ready to channel your inner artist and create your own masterpiece.

LESSONS FROM LOTUSLAND

Join us online for our free webinar series with special guest experts. Wednesday April 2 at 5:30 pm. Recordings of previous lectures may be found online at lotusland.org.

- Wed 4/2 Oaks: Guardians of California's Biodiversity**
Delve into the ecological significance of California's oaks with Victoria Sork, Professor of Ecology and Evolutionary Biology at UCLA. Discover how these iconic trees adapt to environmental changes and their crucial role in sustaining local ecosystems.

BENEFIT TOURS & EVENTS

Support the Garden by taking part in unique and exclusive events that celebrate nature and exceptional experiences.

- Wed 4/16 Gardens in Paradise: Tour Exceptional Private Gardens**
Guided by landscape architects Derrick Eichelberger of Arcadia Studio and Eric Nagelmann, this progressive garden tour will uncover the captivating stories behind breathtaking private properties. Gourmet lunch and specialty cocktails included.
- Fri 5/16 Farmer Forward Dinner curated by Matt Kettmann of The Santa Barbara Independent**
Enjoy a unique garden dining experience celebrating sustainable farming and showcasing locally grown organic produce as part of the Santa Barbara Culinary Experience, the annual week-long celebration of Santa Barbara's vibrant food and wine culture, taking place from May 11-18.



PUBLIC EVENTS



- Fri 2/14 Valentine's Day at the Garden:** Let the Garden set the mood for a romantic date with champagne and live music.
- Fri 4/18 Music to Welcome Moons into Waves**
Join us in the Japanese Garden for an immersive musical experience featuring ceremonial instruments used in gagaku, the Japanese Imperial Court, composed by Taro Ishida, and organized by Fabio Rambelli, professor of Religious Studies, UCSB and International Shinto Foundation Chair.
- Sat 5/10 Spring Picnic:** Bring your own picnic for a family friendly day in the Garden featuring live music by Conner Cherland.
- Sat 6/14 Summer Picnic:** Pack your picnic and join family and friends in the Garden with live music by Brian Kinsella.
- Sat 5/24 Twilight Tours:** Experience Lotusland after hours and enjoy the late afternoon glow as you stroll through the Garden.

APPRECIATION EVENTS

- Sat 6/7 Lotus Society Appreciation Cocktail Party***
Lotus Society members are invited to an annual appreciation event who seed the future with endowment contributions and planned gifts and bequests. *By invitation
- Tue 6/24 Volunteer Appreciation Lunch**
This event celebrates active volunteers, the vibrant community that keeps Lotusland flourishing.



Program subject to modification. Advanced booking is required for all events. Enter your Membership ID for reduced rates (where applicable).



For more information and tickets, visit: lotusland.org/events

LOTUSLAND *Forever*

CAMPAIGN UPDATE

The *Lotusland Forever* Campaign is designed to preserve the historic Lotusland property, create improved infrastructure and accessibility throughout the Garden, and grow the endowment for the sustainable future of the organization. We saw tremendous support throughout 2024 entering 2025 with gifts and grants totaling \$17.4 million; \$11.3 of that dedicated to capital improvements and the balance to grow the Lotusland endowment. We are deeply grateful to all our generous supporters who contributed to making this last year the most significant for campaign fundraising yet!

We are pleased to share recent fundraising successes and exciting progress growing the Lotusland Endowment. The end of 2024 culminated with **100% participation in the campaign from our Board of Trustees**. In addition, we would like to recognize a number of donors who made additional or significant gifts over the past few months, including: **Susan and Riley Bechtel and Adele and Loi Nguyen** for their support of the gardens and grounds,

and **Louis Scolnik and Joy Masoff**, for their contributions to the Rose Garden and Water Garden endowment funds. We are also deeply grateful to **Belle Hahn and Lily Hahn Shining** for their generous capital gift and their naming of the future **Tropical Garden Terrace**, an accessible haven for gathering in the renovated Tropical Garden with elements of art and artifacts restored from the original estate.

To learn more about how to help secure Lotusland Forever, please contact development@lotusland.org or 805.324.8426.

SECURED FUNDS

Gifts committed or received after January 1, 2021

FUNDS	TOTAL CASH
ENDOWMENT	\$6,081,680
CAPITAL	\$11,298,341
TOTAL DEFERRED (Endowment)	\$13,580,000*
TOTAL CASH SECURED	\$17,380,021

** The Lotusland Forever Campaign seeks to raise a total of \$15 million in endowment, with \$10 million of that goal to be raised in cash gifts.*

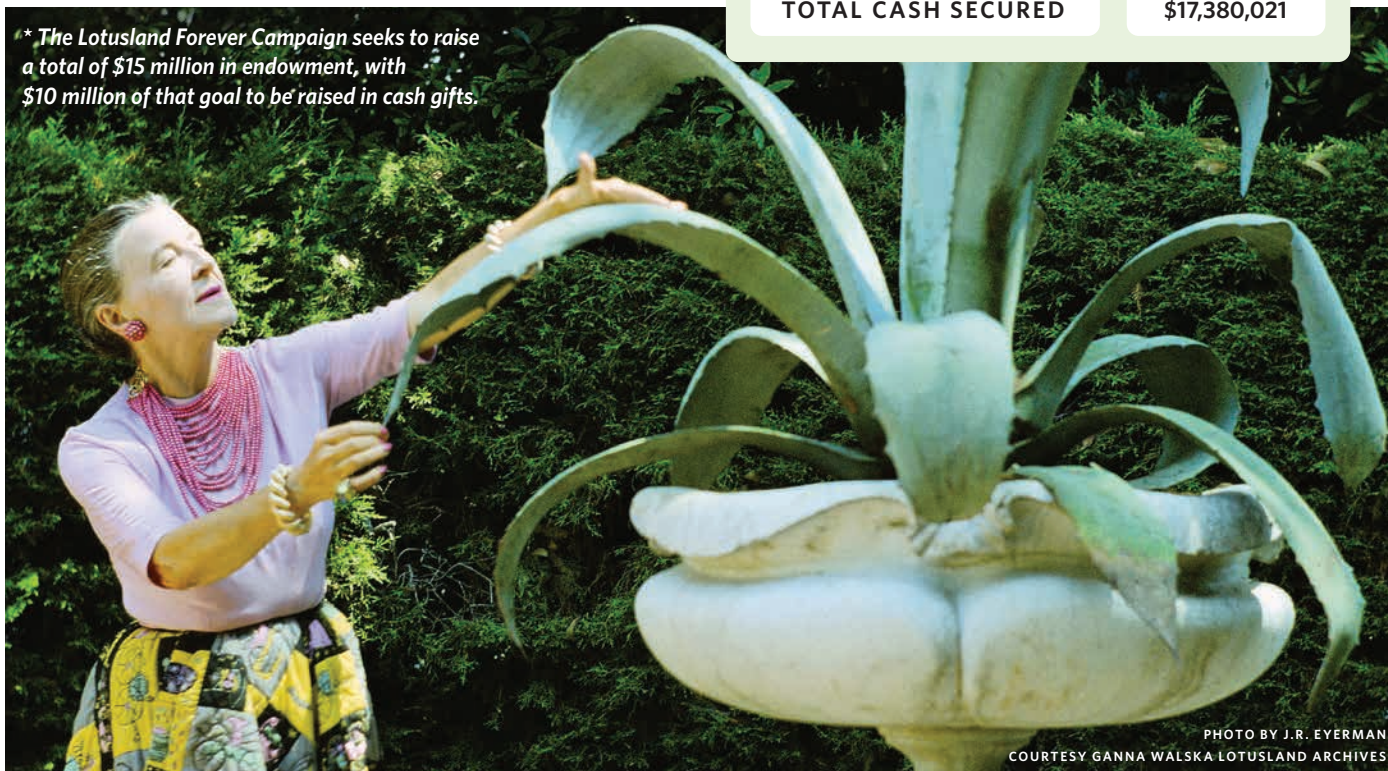


PHOTO BY J.R. EYERMAN
COURTESY GANNA WALSKA LOTUSLAND ARCHIVES

DONOR HONOR ROLL

as of December 1, 2024

Lotusland gratefully acknowledges the generosity of the following donors who have contributed to the Lotusland Forever Campaign:

\$1,000,000+

The Ann Jackson Family Foundation
Connie Flowers Percy
Eric and Wendy Schmidt
The Estate of Hania Tallmadge
The Wyatt Family

\$500,000-\$999,999

Anonymous
Susan and Riley Bechtel
Julie and Roger Davis
The Estate of Harry Felder
Twin Hearts: Belle Hahn and Lily Hahn Shining
The Manitou Fund with special thanks to Nora McNeely Hurley
The John C. Mithun Foundation
Julie and Peter Morley

\$100,000-\$499,000

The Alice Tweed Tuohy Foundation
Jeanne and Robert Anderson
Anonymous
Maureen and Edward Bousa
The Grassini Family Foundation
David M. Jones
The Hutton Parker Foundation
Mimi Michaelis
Mari and Hank Mitchel
Marcie and Robert Musser

Adele and Loi Nguyen
Stephen Schaible and Daron Buita
Louis Scolnik and Joy Masoff
Christopher Toomey
Crystal and Clifford Wyatt

\$25,000-\$99,999

Anonymous
Laura and John Bridley
Lynn Cunningham Brown and Christopher C. Brown
Ronald and Patricia G. Caird
Douglas Clovis Hall
Lesley Cunningham and Cyndee Howard
Rachael Douglas
Sheri Fults
The Garden Conservancy
Dorothy H. and John R. Gardner
Mr. Kim L. Hunter
Virginia Castagnola-Hunter
Judith Little
Joseph Marek and John Bernatz
The Montecito Community Foundation
The Murphy-Sloyan Family
Elizabeth Patterson & The Thornton Foundation
Patti Prairie and Alan Hochberg
Jeffrey Romano and Stan Shayer
The Santa Barbara Foundation
Cordelia and Peter Stearns

Nita and Henk van der Werff
John and Nancy Vasi
Julianne Willig
Rick and Sheila Vitelle
Lisa and David Wolf
George and Beth Wood

\$10,000-\$24,999

Scott and Ashley Adelson
Merryl Brown
Geoff and Kimberly Crane
Giffin and Crane
The Estate of Barbara Dixon
Ginni Dreier
Ron and Andrea Hein
Mark and Maria Schmidt

\$1,000-\$9,999

Allison Armour
Daniel Bifano and Allan Brostrom
Jack and Elizabeth Bunce
Patrick and Sandra Crotteau
Harrison Design Santa Barbara
Susan and Robert Lieff
Jill Taylor and Ray Link
Santa Barbara Garden Club
Caroline R. Thompson
Tim Walsh and Mike Healy

Lotusland gratefully acknowledges the generosity of the following donors who have made a planned gift to the Lotusland Forever Campaign:

Anonymous
A Friend
Laura and John Bridley
Lynn Cunningham Brown and Christopher C. Brown

Ronald and Patricia G. Caird
Dorothy H. and John R. Gardner
Mr. Kim L. Hunter
David M. Jones

Joseph Marek and John Bernatz
Eric Nagelmann
Patti Prairie and Alan Hochberg
Lisa and David Wolf

We recognize these donors who have selflessly contributed to help fund and name the following buildings and features:

George Washington Smith Pavilion -
The Ann Jackson Family Foundation
Pavilion Patio - Julie and Roger Davis
Abalone Pond & Triton Fountain -
The Manitou Fund at the direction of
Nora McNeely Hurley

Sunken Drawing Room - David M. Jones
Rooster Grotto - Mari and Hank Mitchel
Cycad Garden Terrace - The Wyatt Family
Outdoor Classroom - John C. Mithun Foundation
Water Garden Terrace - Julie and Peter Morley

Tropical Garden Terrace - Twin Hearts:
Belle Hahn and Lily Hahn Shining
Wishing Well Terrace -
The Grassini Family Foundation

To see available naming opportunities please contact development@lotusland.org or visit the Lotusland Forever website: lotusland.org/forever



Join us the morning of April 16th for another edition of our exclusive Gardens in Paradise series. This progressive garden tour will uncover the stories behind three breathtaking Montecito properties, guided by experts and homeowners, who will illuminate the artistry and vision that shaped these gardens.

This tour also features a special presentation by Douglas Woods, author of the forthcoming Rizzoli publication *Santa Barbara at Home in Paradise*. Accompanied by photographer Matt Walla, whose stunning images bring the book to life with a feature of Lotusland's historic landscapes. Doug will explore the enduring influence of Santa Barbara's iconic architecture and design heritage. Guests will receive a signed copy of this garden book with contributions by architects Marc Appleton and M. Brian Tichenor, celebrating the timeless beauty of the American Riviera.

GARDENS IN PARADISE is an exclusive private garden tour program presented by Ganna Walska Lotusland benefiting the conservation and care of the Garden and its enduring legacy! Guided by renowned landscape designers, architects and leading experts in their fields, receive insider access to breathtaking private gardens. Each bespoke tour is designed around a series of private visits for a limited number of guests, ensuring an intimate and convivial atmosphere. Enjoy gourmet catering and fine wines for each location. Become an annual sponsor and secure your place for our next tour date.



For tickets and information about sponsorship opportunities for this program, visit lotusland.org/gardens-in-paradise or development@lotusland.org



SERIES SPONSORS

Peggy Anderson
Rebecca DeSantis
Connie Flowers Pearcy
Mahri Kerley
Travis Kranz
Crystal Wyatt

THE POWER OF STRATEGIC GIVING: BEYOND CASH DONATIONS

Ashley Fontanetta CTFA, CAP®
Senior Vice President, Client Advisor, Whittier Trust

Join Ashley Fontanetta from Whittier Trust for a morning of philanthropic insights on March 17 at 10:30 am at the Santa Barbara Club. Discover transformative strategies for charitable giving that go far beyond traditional cash contributions. Learn how to maximize your impact and potential tax benefits by leveraging assets you may not have considered.

This session will cover:

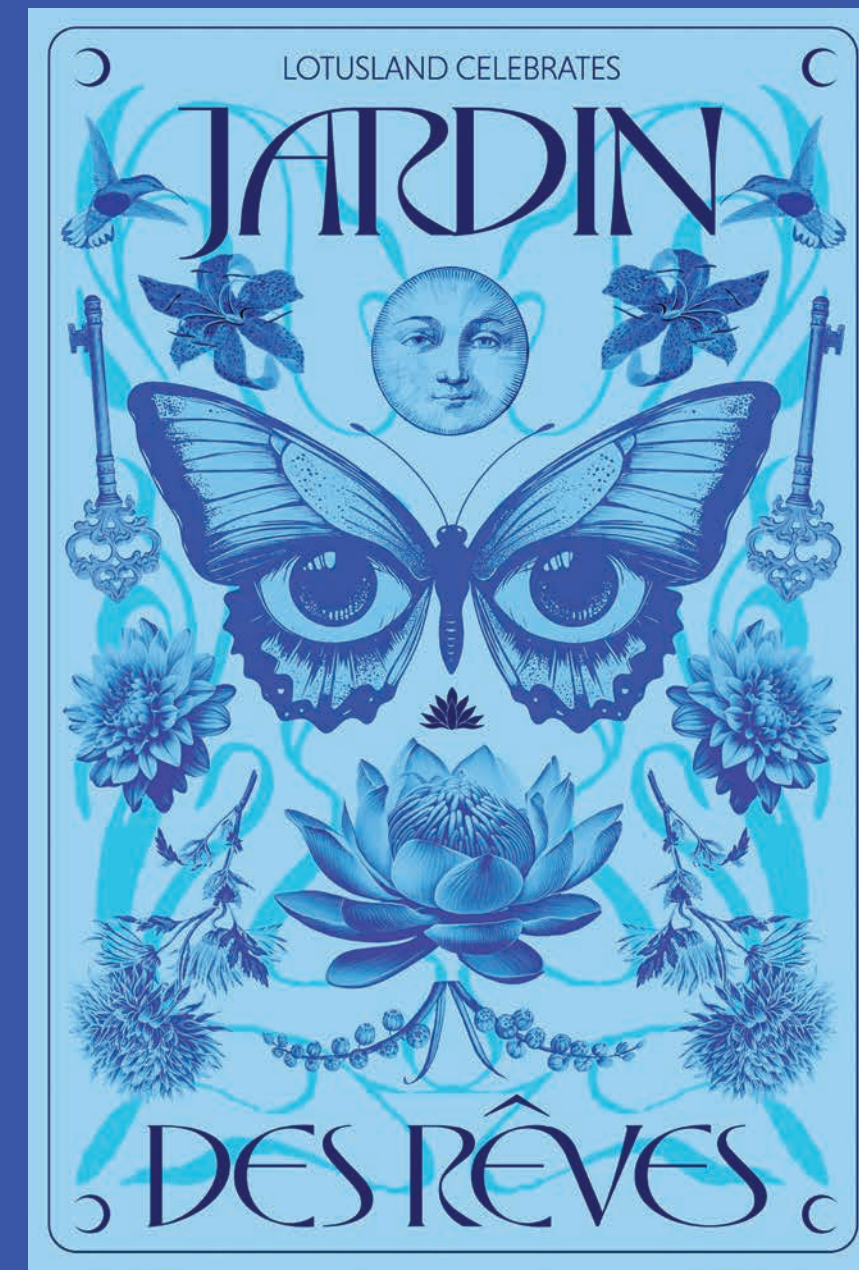
- How to donate appreciated securities, real estate, and other non-cash assets
- Tax-efficient charitable giving strategies

Lotusland is seeking extraordinary gifts of real estate that can create lasting impact for the Garden. By donating appreciated property, you can simultaneously support our

mission of conservation and education while potentially receiving significant tax advantages. Real estate gifts provide a unique opportunity to transform underutilized assets into a powerful force for environmental stewardship. Our team can help you structure a donation that meets your financial goals while supporting Lotusland's conservation and community programs.

DATE & TIME:	Monday, March 17, 10:30 am-12:00 pm
LOCATION:	Santa Barbara Club 1105 Chapala Street, Santa Barbara, CA 93101
RSVP REQUIRED:	development@lotusland.org 805.324.8426
This is a complimentary event. Space is limited, so reserve your seat today!	

JOIN US SATURDAY, JULY 19
FOR SANTA BARBARA'S MOST ANTICIPATED GARDEN GALA



Immerse yourself in the dreamscape of Lotusland's *Jardin des Rêves*, a celebration of botanical beauty, exceptional plant collections, and the artistry of nature, all in support of preserving this treasured sanctuary.

Explore sponsorship opportunities and secure your reservation at lotuslandcelebrates.org

Pre-sale access is now open for Lotusland Members.

2025 CO-CHAIRS
David M. Jones Julie Morley

PHILANTHROPIC MEMBERSHIPS SUSTAIN THE GARDEN

Ganna Walska Lotusland extends our heartfelt gratitude to all Patron Circle members. Your generous support is vital to keeping Lotusland thriving and accessible to the public. It helps preserve our renowned plant collections, promotes sustainable horticultural practices, and supports education and well-being initiatives that inspire and enrich our community. Thank you for ensuring the Garden's continued vitality.

LUMINARY

Lily Hahn Shining & Stewart Shining

INNOVATOR

Stephen Schaible & Daron Builta

STEWARD

Jeanne & Robert Anderson
 Ron Burkle
 Carrie Cooper & Glenn Griffith
 Hillary & Tooev Courtemanche
 Arthur R. Gaudi
 Penny & Dr. Steven Gundry
 Krista Raine & Hannah Levitan
 Kristina & Christopher McCausland
 Julie & Peter Morley
 Connie Flowers Pearcy & John Pearcy
 Jill Taylor & Ray Link
 Lynda Weinman & Bruce Heavin
 Anne-Marie & Anthony Grumbine

GUARDIAN

Ashley & Scott Adelson
 John Bernatz & Joseph Marek
 Maureen & Edward Bousa
 Cheryl Burke & Alan Weiss
 Pat & Ron Caird
 Alicia Carnevali
 Eleda & Beverly Cohen
 Marcia & John Mike Cohen
 Julie & Roger Davis
 Rebecca & Rob DeSantis
 Alexis Deutsch-Adler & Robert Adler
 Beth DeWoody & Firooz Zahedi
 Lucy Doheny
 Marcia & John Mike Cohen
 Julie & Roger Davis
 Rebecca & Rob DeSantis
 Alexis Deutsch-Adler & Robert Adler
 Beth DeWoody & Firooz Zahedi
 Lucy Doheny
 Patty Elias & Michael Rosenfeld
 Janice Feldman & Mitchell Grossman
 J. Scott Francis, the Francis Family Foundation
 Maggie Mae & Fabienne Guerin
 Cyndee Howard & Lesley Cunningham
 Kim L. Hunter & Paulo P. Lima, Ph.D.
 David M. Jones
 Dina Landi
 Susan & Robert Lief
 Carole MacElhenny
 Joy Masoff & Lou Scolnik
 Suzanne & Gilbert Mathews
 Mimi Michaelis
 Kyle Murray
 Marcie & Robert Musser
 Kevin O'Brien
 Sheila & Thomas Prendiville
 Faye & Robert Riskin

JEFFREY ROMANO & STAN SHAYER

Dina & David Saalisi
 Judy Shea
 Anitra Sheen
 Christopher J. Toomey
 Nita & Henk van der Werff
 Shirley Wang

CONSERVATOR

Mary Arvizu & Chris Hayden
 Laurel Barrack
 Susie & Riley Bechtel
 Chuck Brewer
 Merryl Brown
 Allison & Timothy Coleman
 Kim & Geoff Crane
 Susan Read & Ted Cronin
 Sandra & Patrick Crotteau
 Bonnie Demergasso
 Patricia & Gordon Feingold
 Jim Foster & Guillermo Nicolas
 Priscilla Gaines
 Linda & Fred Gluck
 Melinda Goodman-Kemp & Robert Kemp
 Perri Harcourt
 Maia Kikerpill & Daniel Nash
 Katherine Kims & Eric Ng
 Dorothy Largay & Wayne Rosing
 Michael Loftis & Erik Nickel
 Siobhan McDevitt & Brian Calvin
 Fran & John Nielsen
 Setenay & David Osman
 Alexandra & Jeffrey Pfeifer
 Holly & Kevin Ricklefs
 Phyllis & Clifford Ruddle
 Leslie & Mark Schneiderman
 Katherine Schwarzenegger & Chris Pratt
 Jens Sorensen & Kyle Irwin
 Pam & Russ Strobel
 Cabana Home, Caroline Thompson & Steve Thompson
 Susanne & Gary Tobey
 Elena Urschel
 Susan & David Viniar
 Sheila & Rick Vitelle
 Diana Wold Marszalek & Donald Marszalek
 Lisa & David Wolf
 Johanna Woollcott & Eugene McCarthy
 Crystal & Clifford Wyatt

CULTIVATOR

Susan Allen & William Gadsby
 Patricia Aoyama & Chris Kleveland
 Betsy Atwater
 Amy & Glenn Bacheller
 Celeste Baker
 Xorin Balbes & Truman Davies
 Melissa Bator & Mark Broomfield
 Jocelyn Belloni & Shawn Dailey
 Donna R. Benaroya
 Robert Benham
 Daniel Bifano & Allan Brostrom
 Tami & Scott Borman
 Maribeth & William Borthwick
 Susan Bowey
 Deborah Bowman
 Susan & Jeff Bridges
 Laura & John Bridley
 Susan Budinger & Jeff Harrah
 Elizabeth & Jack Bunce
 Connie & Nigel Buxton
 Susan & Brett Caine
 Elizabeth Case
 Louise & Timothy Casey
 Prince Harry and Meghan, The Duke and Duchess of Sussex
 Virginia Castagnola-Hunter
 Susan & Peter Cheney
 Jennifer Cheyne & Jane Lynch
 Shireen & Ryan Clarkson
 NancyBell Coe & William Burke
 Cheryl & Bradley Cohen
 Peter & Ricky Cohen
 Teena Colebrook & Robert Dunlap
 Ana & Robert Cook
 Rebecca & James Craig
 Melissa Crigman
 Lynn Cunningham Brown & Chris Brown
 Kathy & Jeffrey Daly
 Alexandra & William Daugherty
 Julie & Glenn Davidson
 Rachael Douglas
 Sheri Eckmann & William Klansek
 Adam Feild & Erik Torkells
 Sintija Felder
 Donna Fellows & Dave Johnson
 Meaghan Finley & Cynthia Hunt
 Tisha & Josie Ford
 Connie Frank & Evan Thompson
 Cynthia & Julia Frohling
 Debra Ann Galin

Dorothy H. & John Gardner
 Karen Garrolini
 Erin Gerken & Zeb Stewart
 Alexandra & Hanson Gifford
 Barbara & Bill Gillette
 Carroll & John Goodman
 Belle Hahn
 Mary Hampson & Julia Lang
 Maren Hansen & Steve Aizenstat
 Dennis Hayes
 John Hayes
 Jennifer Henry & Jonathan Stoller
 Robin & Roger Himovitz
 Jane Hind, The Hind Foundation
 Alicia & Joshua Holm
 Gerald Incandella & George Schoellkopf
 Chana & Jim Jackson
 Luci & Rich Janssen
 Dennis John Jurcak
 Carol & Tara Kaiser
 Karen & Lonnie Kane
 Mahri Kerley
 C. Robert Kidder
 Michael Klein
 Jacquelyn Klein-Brown & Michael Trambert
 Irene & Bruce Klores
 Teresa Kuskey & Rick Oshay
 Buff LaGrange Leach & Alec Leach
 Maria Lantz Levitt & Buddy Lantz
 Arlyn & Michael Latin
 Ellen Lawson
 Cindy & Madeline Leach
 Liz & Eric Lefkofsky
 Karen Lehrer & Steve Sherwin
 Ellen Lehrer Orlando & Thomas Orlando
 Judith Little
 Deborah Loeb
 Michael MacElhenny & David Wine
 John Maienza & Gregg Wilson
 Thomas Majewski
 Michelle Martinez & Thomas Kuo
 Brenda & Rick McDonald
 Angie & Christian McGrath
 Lana McIntyre
 Sandra Mclver
 Mari & Hank Mitchel
 P. Kelly Mooney & R. Scott Henningsen
 Leslie Morgenstein
 Lisa McGonigle & Diane Munro
 Phyllis Myers & Dan Greiwe
 Adele & Loi Nguyen
 Dr. Joyce Niland
 Dede & James C. Nonn
 Gretchen & Jack Norqual
 Belita Ong & J. Gordon Auchincloss

Mitchell Opalski
 Anna Ortiz-Morfit & Stephen Zeiss
 Gwyneth Paltrow
 Nancy Parker & Eric Stull
 Elizabeth & Tom Patterson
 Meg & Doug Pearson
 Debora & Gary Petlow
 Kelley & Terry Pillow
 Gwen & Brian Potiker
 Julie & Christopher Proctor
 Lisa Proctor Hawkins & Trip Hawkins
 Stacy & Ron Pulice
 Blair & Stephen Raber
 Allison Raine & Jonathan Seelig
 Marny Randall
 Brenda & Garland Reiter
 Coleen Richardson Friedel & Ted Friedel
 Karen Roberts & Bradley S. Dyruff
 Anastasha Rousso & Evan Berger
 Patricia Ryan
 Maria & Mark Schmidt
 Eva & Bryan Schreier
 Theresa Shanahan
 Sally Sheridan & Andy Norris
 Laurie Siegel & Joseph Nosofsky
 Tom Sloyan
 Connie Smith
 Martha & Jonathan Smolen
 Mary Jane & Ronald Steele
 Colleen & Aron Stein
 Janice & Neil Stenbuck
 Melissa Stewart
 Ann & Ken Stinson
 Sheila Stone & Chase Bartle
 Christine Thacker & Daniel Geiger
 Leslie Thomas & Richard Salzberg
 Patricia Tisch
 Ellin Todd
 Janet & Jack Underwood
 Debbie & Milt Valera
 Nancy & John Vasi
 Carol Vernon & Bob Turbin
 Erin & G.M. Nicholas Vik
 Deanne Violich
 Carolyn & Lauren Von Der Ahe
 Alexandra Vorbeck
 Ann & Mark Vuchinich
 Shirley & Ken Waxman
 Peggy Wiley & Wilson Quarré
 Carolyn & Bob Williams
 Amy Windmueller & Mark Frank
 Christine Wong & Jeffrey Light
 Victoria & William Yakobovich
 Gina & Alex Ziegler

MEMBERSHIP AT LOTUSLAND:
 Join a Growing
 Community

Lotusland's membership offers more than access—it's an invitation to be part of a vibrant community dedicated to the beauty and conservation of this remarkable Garden.

For 2025, we've introduced meaningful enhancements that make it easier and more rewarding to be part of Lotusland. For those joining at the Supporter Levels, memberships are fully tax-deductible and can be paid through **Donor-Advised Funds (DAFs)**. This option allows members to maximize their contributions while enjoying benefits like complimentary admission, guest passes, and exclusive access to private tours and events. It's another way to ensure your membership aligns with your values and passion for conservation.

From the discounted admission available at the Supporter level to the elevated experiences offered to Patron Circle members, every membership helps protect and celebrate the more than 34,000 plants and 3,500 species that make Lotusland a world-class botanical garden. Plus, members enjoy discounts at the Garden Shop and partner nurseries, making your connection to the Garden even more rewarding.

Whether you're renewing your membership or joining for the first time, 2025 is the perfect year to deepen your involvement and join a community dedicated to preserving and enjoying this extraordinary natural sanctuary.



For more information on membership levels, benefits, or supporting Lotusland, visit lotusland.org/support



PHOTO: KIM BAILE

Patron Circle members active in 2024. Patron Circle membership begins at \$1,250 annually. To learn more about becoming a member, please contact the Membership Department at membership@lotusland.org or call 805.969.3767 x115.

Enhanced Tours & Patio Events

Host an event on the Pavilion Patio like Madame Ganna Walska.

Nestled beside the Upper Bromeliad Garden, the newly renovated Pavilion Patio is an intimate space perfect for special occasions and available for hosting a small event. With seating for up to 35 guests, this secluded gem features a tranquil water feature, breathtaking views of the Great Lawn, and a connection to Lotusland's past, just steps from Madame's residence.

Designed by renowned architect George Washington Smith, the Pavilion Patio is a piece of history brought to life, offering a timeless setting to enhance your event. Enjoy a docent-led tour followed by a gathering in this elegant and secluded space.

Learn more about Enhanced Tours at lotusland.org/events



Madame Walska and Happy, 1957.
PHOTO BY J.R. EYERMAN. COURTESY GANNA WALSKA LOTUSLAND ARCHIVES



PHOTO: KIM BAILE

LOTUSLAND GRATEFULLY ACKNOWLEDGES DONATIONS

August, September, October, November, and December 2024

THE LOTUS SOCIETY

NEW LOTUS SOCIETY MEMBERS

Christopher Clinton Conway and Floyd M. Elwell, III
Tim Walsh & Mike Healy

GRANTS & SPECIAL PROJECTS

ARCHIVES & NON-LIVING COLLECTIONS

The Groundworks Grants
The Groundwork Grants program is administered by the California State Library in partnership with Myriad Consulting & Training and is part of the library's "Ready or Not: California Cultural Heritage Disaster Preparedness Project," funded by the State of California.

COMMUNITY ACCESS DAYS

The Lucky One Foundation, in honor of Sarah Romo

GARDEN STORAGE SHED

Nancy & John Vasi

STAFF APPRECIATION FUND

Ashley & Scott Adelson
Jeanne & Robert Anderson
Daniel Bifano & Allan Brostrom
Laura & John Bridley
Susan Read & Ted Cronin
David M. Jones
Joseph Marek & John Bernatz
Mari & Hank Mitchel
Elizabeth & Tom Patterson
Connie Flowers Percy & John Percy
Jeffrey Romano & Stan Shayer
Stephen Schaible & Daron Buita
Mark & Maria Schmidt
Caroline Thompson
Rick & Sheila Vitelle
Lisa & David Wolf

EXECUTIVE DIRECTOR ACTION FUND

David M. Jones

GARDEN STORAGE SHED

Nancy & John Vasi

EDUCATION & OUTREACH PROGRAMS

SBCC ENVIRONMENTAL HORTICULTURE INTERNSHIPS

John Percival & Mary C. Jefferson Endowment Fund

EDUCATION PROGRAMS

Roy E. Crummer Foundation

JUNIOR BOTANIST PROGRAM

Clayton Nolde

SUSTAINABILITY PROGRAMS

SUSTAINABILITY EDUCATION & CARBON SEQUESTRATION

Yardi Systems

SUSTAINABLE HORTICULTURE

Confidence Foundation, directed by Elizabeth Anderson

SUSTAINABLE PLANT HEALTHCARE SUMMER INTERNSHIP

John Percival & Mary C. Jefferson Endowment Fund

LANDSCAPE EQUIPMENT ELECTRIFICATION

Santa Barbara County Air Pollution Control District

GENERAL OPERATING SUPPORT

Lia Aquino
Philip & Leslie Bernstein, in honor of
Stephen Schaible & Daron Buita
Lucille Dane
Lauralyn Deringer
Colleen Doremus, in recognition of Maria Schmidt
Barbara Hilaire
C. Robert & Mary G. Kidder
Albert S. Lyons, IV, in honor of Leslie & Philip Bernstein
Jacqueline & Harry McMahon, in honor of Mari Mitchel
Ellen Lehrer Orlando & Thomas Orlando
Karla Ovalle
Laura-Lee Parks, in memory of Nathan Robert DeWees
Jane Ross & James Yaffe
STS Foundation
Hillary Tentler

IN-KIND DONATIONS

Arcadia Studio
Rachael Douglas
Harrison Design
Chao Pang
Mary Sadeghian
SEPPS Land Use Planning & Permitting
Crystal & Clifford Wyatt

(Continued on page 23)

Help to Fly the Lotusland Flag at Santa Barbara Harbor

The Lotusland flag at Santa Barbara Harbor

symbolizes our connection to a thriving network of non-profit organizations and the shared values of the Santa Barbara community. This flag proudly represents our dedication to preserving nature, fostering collaboration, and supporting cultural stewardship.

Maintaining the flag year-round is \$1,000 annually, and your gift in any amount is welcome and appreciated. By supporting the Breakwater Flags you are making Lotusland a visible and vibrant part of Santa Barbara's iconic waterfront.

MAKING LOTUSLAND ACCESSIBLE:

Support Museums for All

Through the **Museums for All** program, Lotusland provides access to visitors who might otherwise be unable to attend due to financial barriers. This initiative allows families receiving Supplemental Nutrition Program (SNAP) benefits to visit Lotusland for just \$3 per person, fostering inclusion and encouraging lifelong engagement with cultural institutions.

We are proud to be part of this network of national and local museums, working together to enrich our community. Participation in Museums for All requires underwriting of \$20,000 annually to cover reduced admission fees and ensure all visitors may access Lotusland, without financial constraints.

If you would like to contribute to this effort, your support will directly fund meaningful access for individuals and families to experience the beauty and inspiration of Lotusland.



We want to hear from you! Email development@lotusland.org or call 805.324.8426, to help with a wishlist item, or scan the QR code to give today.

LOTUSLAND GRATEFULLY ACKNOWLEDGES DONATIONS

August, September, October, November, and December 2024

(Continued from page 21)

EXCEPTIONAL PLANTS AUCTION

SPONSORS

Curator

Sintija Felder, *in memory of Harry Felder, III*
The Wood-Claeyssens Foundation

Collector

Arroyo Seco Construction
Connie Flowers Percy & John Percy
Elena Urschel

Connoisseur

Jeanne and Robert Anderson
Maureen and Edward Bousa
Elizabeth & Tom Patterson
Susanne & Gary Tobey

Grower

Arcadia Studio
Daniel Bifano and Allan Brostrom
Lynn Cunningham Brown & Christopher C. Brown
Rachael Douglas
Joseph Marek Landscape Architecture
Julie & Peter Morley
Stephen Schaible & Daron Builta
Sea Crest Nursery - Don Lee Farms
Steve Hanson Landscaping

Additional Support From

7 Day Nursery
Aloes in Wonderland, Jeff Chemnick
Amazon Horticulture
Ambriz Kingdom of Plants
Jeanne & Robert Anderson
Australian Native Plants
Daniel Bifano & Allan Brostrom
John E. Bleck
Anna Bower
Bird Rock Tropicals
Cal Poly Plant Conservatory
Cal-Orchid, Inc.
Laurel & Paul Carlisle
Cistus Nursery
Larry Disharoon & Diane Galvan
Marcia Donohue
Diane Dunhill
Julian & Leslie Duval
The Elisabeth C. Miller Botanical Garden
Evergreen Landscape Architects, Inc.
Jim Foster
Trina Gault
Daniel Geiger & Christine Thacker
Adam Graham, Arroyo Secco Construction

Greenlee & Associates
Grubb & Nadler
Huntington Botanical Gardens
Scott & Jeanette Johnson
John Fairey Garden
Jon Kaplan
Jasper Jones
Jones Landscaping
Chris Mankey
Sandy Masuo
Greg Mehlhaff & Fernando Souper
David Moorman
Orange Coast College
PlantHaven
Rare Plant Research
Raiz Feliz Shop
Ruth Bancroft Garden Inc.
Mary Sadeghian
San Marcos Growers
Sea Crest Nursery - A Don Lee Farms Company
Solana Succulents
Sonoma Botanical Garden
Starr Nursery
Carol Terry
David & Eileen Tufenkian
Mike Tully
UCSB Greenhouses
Charles Varni
Western Cactus Enterprises, Inc.
Yes Yes Nursery

GARDENS IN PARADISE

SERIES SPONSORS

Connie Flowers Percy
Crystal & Clifford Wyatt

PATRONS

Ashley & Scott Adelson
Jeanne & Robert Anderson
Louise & Timothy Casey
Adam Graham & Katie Szopa
Steven & Elizabeth Green
Barry & Janet Lang
Edie Lycke
Mari & Hank Mitchel
Marcie & Robert Musser
Mitchell Opalski
Ted Plute & Larry Falxa
Ellin Todd
Lisa & David Wolf

All the donations acknowledged above are gifts of \$100.00 or more between October 2024 and January 2025. Gifts for the Garden donations from October 2024 to January 2025 will be acknowledged in the Summer 2025 Newsletter.



695 Ashley Road
Santa Barbara, CA 93108

Nonprofit Org.
U.S. POSTAGE
PAID
Santa Barbara
California
Permit No. 163

Winter Schedule 2025

For more detailed information about upcoming events, see pages 12-13 or visit [Lotusland.org/events](https://lotusland.org/events).

Valentine's Day at the Garden
Feb 14

Wellness Wednesday: Forest Bathing
Feb 26

Behind-the-Scenes Tour
Mar 13

Whittier Trust Presentation
Mar 17

Wellness Wednesday: Active Stretching
Mar 26

Member's Golden Hour Wine Walk
Apr 4

Compost Tea Party
Apr 12

Gardens in Paradise
Apr 16

Wellness Wednesday: Sound Bath
Apr 23

**Santa Barbara Museum of Art
Artist Atelier**
May 2

Spring Picnic
May 10

Farmer Forward Dinner
May 16

Wellness Wednesday: Reiki
May 21

Twilight Tours
May 24

Lotus Society Cocktail Party
Jun 7

Spring Picnic
Jun 14

**Wellness Wednesday:
Japanese Sound Meditation**
Jun 18



Ticket Release Schedule 2025

FEBRUARY - MARCH

Member Pre-Release
Jan 7

Public Release
Jan 21

APRIL - MAY

Member Pre-Release
Feb 18

Public Release
Mar 4

JUNE - AUGUST

Member Pre-Release
Apr 22

Public Release
May 6

SEPTEMBER - NOVEMBER

Member Pre-Release
Jul 22

Public Release
Aug 5

Ticket release dates are subject to change.
Additional information is available at
lotusland.org/visit