

Ganna
Walska



LOTUSLAND

NEWSLETTER • WINTER 2018

GARDEN OPENS TO THE PUBLIC

Lotusland Celebrates 25 Years

JAPANESE GARDEN RENOVATION

Breaking Ground



695 Ashley Road
Santa Barbara, California 93108
805.969.3767 • www.lotusland.org

2018 BOARD OF TRUSTEES

Daniel Bifano, *President*
Belle Hahn Cohen
Geoff Crane
Lesley Cunningham
William M. Daugherty
Ian M. Fisher
Dorothy H. Gardner
David M. Jones
Joseph Marek
Suzanne Mathews
Alexandra Morse
Mimi Michaelis
Connie Pearcy
Eileen Rasmussen
George Schoellkopf
Mick Thomas
Caroline R. Thompson
John Van Donge
Crystal Wyatt
Yasmine Zodeh

LIFETIME HONORARY TRUSTEES

Merryl Brown
Robert J. Emmons
Arthur R. Gaudi
Kisa Heyer

Gwen Stauffer
Chief Executive Officer

Rebecca Anderson
Director of Development

Diane Figueroa, CPA
Director of Finance

Bob Craig
Director of Marketing

Tyler Diehl
Director of Gardens and Facilities

Bambi Leonard
Membership Manager

Paul Mills
Curator of the Living Collections

Dorothy Shaner
Director of Public Programs

Printed by Jano Graphics
Designed by Leslie Lewis Sigler

LETTER FROM THE CHIEF EXECUTIVE OFFICER

Dear Members and Friends,

THIS FEBRUARY we open the Cold Springs gates to guests for Lotusland's 25th season, kicking off a year-long celebration with special exhibits, events and programs. Be sure to check out our main exhibit, *Building a Botanical Nirvana:*

The Story of Lotusland, remembering the long history of Lotusland and honoring all those who contributed to making the garden what it is today.



While we take time during this milestone anniversary to reflect on the past, it is even more crucial to consider what comes next. Sōtō Zen monk and teacher, Shunryu Suzuki, famously quoted, "A garden is never finished." Taken quite literally, a garden is constantly changing and truly requires continual nurturing and care as it grows and matures. Organizations are like gardens in that way, changing and evolving over time. In this anniversary year, the Board and

staff are sowing seeds of progress and planting new ideas, programs and plans to cultivate and grow Lotusland's future.

You will notice a few obvious and immediate changes, such as the new look of our quarterly newsletter, which has had the same format since its inception, and went to full color only ten years ago. The first Lotusland newsletter, published in autumn of 1992, was black and pink ink on beige paper, reminiscent of a newspaper. The lead story, *The Legacy of Ganna Walska*, was written by Patricia Tarkowska, who had been Walska's personal secretary and, after Madame's death, joined the staff of the Ganna Walska Lotusland Foundation as Curator of Archives. That inaugural issue also included a story and architectural rendering of the new Visitor Center, yet to be built. As part of our anniversary celebration, we are posting all past newsletters — and new issues as we produce them — on our website so that everyone can follow the interesting stories of Lotusland's development as a public garden.

We hope you like how we have refreshed our newsletter. While we updated the design and format and added four more pages, please be assured that the quality and diversity of the content will remain at Lotusland's highest standards, as we always strive for excellence in everything we do.

At this anniversary we also rejoice — with a huge sigh of relief — that Lotusland is still here, thanks to the courageous work of innumerable firefighters who battled the Thomas Fire and saved the garden from total destruction. We invite you to join us throughout the year to partake in Lotusland's 25th anniversary celebrations, and as the seeds of progress that we have sown for Lotusland's next 25 years begin to grow, we hope you join us as the "gardeners" of Lotusland's future.

Warmest regards,
Gwen L. Stauffer

MISSION

We preserve and enhance the unique, historic estate of Madame Ganna Walska, care for and improve its collections, and develop its conservation and horticulture programs, so they educate us, inspire us, and advance our understanding and appreciation of the importance of plants in our lives and in the life of the planet.

WINTER 2018

Contents

- 2 Letter from Chief Executive Officer
- 3 New Trustee and Board President
- 4 Celebrating 25 Years
- 6 Horticultural Happenings - Rose Care, Firefighters Save Lotusland
- 7 Plants in the Insectary
- 7 Volunteer at Lotusland
- 8 Collections News - Cuba Conference
- 9 Japanese Garden Renovation
- 10 Recapping Fall Events
- 11 Donor Profile - Christopher Toomey
- 11 Gifts for the Garden
- 12 News for Members
- 13 Volunteer Profile - Jenifer McCurry
- 14 Fourth Grade Outreach
- 14 Help Make Our Wishes Come True
- 15 Gardens in Paradise Tours
- 16 Upcoming Events
- 19 Garden Shop

LOTUSLAND WELCOMES NEW TRUSTEE DAVID M. JONES

LOTUSLAND IS PLEASED to announce the addition of David M. Jones to our Board of Trustees. He is President of David M. Jones and Associates, a firm he created in 1985 that specializes in estate and insurance planning for families. David and his wife Judy are part-time residents, splitting their time between Montecito and



Naples, Florida. David and Judy discovered Montecito on a California vacation almost 20 years ago. They are very involved in their scholarship fund for high school seniors and have awarded dozens of college scholarships over the last 10 years. David and Judy have been Lotusland members since 2012, and joined *The Lotus Society* in 2016.

NEW BOARD PRESIDENT DANIEL BIFANO



LOTUSLAND IS PROUD to announce that Daniel Bifano is the new President of the Board of Trustees. Dan has been on the Lotusland Board since 2014, has most recently served as Co-Vice President and has been a member since 1993.

Having been raised in the neighborhood, Dan has a long-time personal attachment to the garden, and his support and commitment to Lotusland is unwavering. Dan is well known in the Montecito and Santa Barbara gardening community for his exceptional knowledge of roses and has been designing gardens, especially rose gardens, since 1989.

Lotusland sincerely thanks Connie Percy for her remarkable seven years of service on the Board of Trustees, including three as President. Connie has provided outstanding leadership and an intelligent, practical approach to help us meet our challenges. We are fortunate that Connie will remain on the Board, as her talent and her enthusiasm for Lotusland are greatly valued and appreciated.

Celebrating 25 Years

GARDENS OPEN TO THE PUBLIC

By Bob Craig and Gwen Stauffer

TWENTY FIVE YEARS AGO, Lotusland first opened as a public garden, fulfilling Ganna Walska's decades long dream of creating "the most outstanding center of horticultural and of educational use." Over the past two and a half decades, more than 300,000 visitors and 25,000 elementary school students have been enchanted, inspired, intrigued by, and have fallen in love with Lotusland. During this time the combined energies of many talented people have helped catapult Lotusland to international prominence, recognized repeatedly as one of the 10 best gardens in the world.



◀ **1995** The George Washington Smith designed Pavilion patio restoration was completed and the Parterre, designed by Paul Thiene, was restored to its original splendor. County approves 7,500 annual visitors increased from 5,000.



▲ **1999-2003** Cycad Garden renovation to remove Armillaria root rot — all the soil was replaced. This was a five year project.

2004 Wall of Honor built.



1993 Lotusland opens to the public in September.

1998 Rose Garden renovation. Addition of a butterfly garden.

2001 *The Lotus Society* begins, Topiary Garden restored, Dunlap Cactus Collection moved to Lotusland.

▼ **1994** Theatre Garden renovation by Isabelle Greene.



2002 County approves 15,000 annual visitors. New greenhouse built.

2000 Main Drive renovated with decomposed granite surface for increased accessibility. A 50 gallon compost tea brewer was purchased.

2003 Cycad Garden renovation completed. Main House kitchen renovated.

▼ **2003** Cactus Garden built.

July **1996** Second annual Lotusland Celebrates gala (*the Marriage of Figaro*) and Neptune Fountain restored.



▲ **1997** Fourth Grade Outreach started. The Ralph Stevens designed Horticultural Clock was refurbished. Perimeter insectary plantings installed.

1999 County approves 13,500 annual visitors.



Preserving and enhancing the rich historic and horticultural heritage of the 37 acre property has always been our driving force, and as illustrated by the chronology below, the challenges have been prodigious and the results often astonishing. In the late 1990s, Madame's prize collection of cycads was threatened to such a degree that 400 tons of topsoil and sand were brought in to replace the infected soil. The process was a five year undertaking. The Blue Garden underwent a significant restoration as the 40-year-old canopy was degrading the rich undergrowth and thereby the design

aesthetic. The Fern Garden was expanded. Patios, fountains, pathways and entire irrigation systems have been refurbished and rebuilt. The monumental transfer of the Dunlap Collection and the creation of the Cactus Garden were enormous projects that profoundly expanded both the Garden and the collections. The Theatre Garden was refurbished and the Palmetum was created. Every garden and feature has benefited from continuous care and improvement. True to our mission, our public programs have also evolved to inspire and inform the public about the importance of living plants to

the quality of life. None of this could have been achieved without the generosity of Lotusland's donors, members, the amazing work of the staff, volunteers and scores of talented artisans and craftspeople.

To celebrate our 25th anniversary, *Building a Botanical Nirvana: The Story of Lotusland* will be on exhibit in the Pavilion beginning in February and will run through May 19. In addition, every issue of the Lotusland newsletter is now available online so that you can read the chronicles of Lotusland's evolution. Find them at lotusland.org/newsletter.

2007 Japanese Garden pond silt removal project completed.

2006 Lotusland receives the Santa Barbara Beautiful President's Award.

2008 Motorcourt Delft tile restored.

2011 Lotusland's first art exhibition, *Gone* by artist Penelope Gottlieb.

2012 Blue Garden renovated. First annual Exceptional Plants: Lotusland Auction & Sale.

2016 Insectary Garden installed. *Always Room at the Top* second edition released.

2005 Cactus Garden opens. Bioswale storm water runoff project started. Michael Towbes named lifetime honorary trustee.

2008 Motorcourt Delft tile restored.

2013 Neptune Fountain renovated. *Swarm: A Collaboration with Bees* exhibit. Topiary Garden endowed.

2015 *Flock: Birds on the Brink* exhibit. Palmetum opens. Cactus Garden expanded.

2009 Main House foyer restored. Cypress Allée and Water Stairs renovation completed.

2017 Japanese Garden Restoration started, Monterey Cypress felled and replaced by lineage seedling.



Horticultural Happenings

FIREFIGHTERS SAVED LOTUSLAND! How Lotusland Survived the Thomas Fire

Lotusland, along with thousands of others, owes a tremendous debt of gratitude to more than 8,400 firefighters whose amazing efforts saved our treasured garden and our community. We also appreciate the sheriff's department for escorting a small crew into the garden to water rare plants in our collections during the evacuation.

At the fire's start, the incredibly dedicated staff of Lotusland implemented our fire evacuation plan by packing archival materials, rare books, paintings, Madame's personal belongings, and administrative records, and loading everything into a moving truck. When Lotusland was placed under mandatory evacuation on December 10th, staff finished loading, then loaded another truck with rare plants, and then drove a caravan of the trucks and other equipment to safety.



Partially burned date palm (*Phoenix dactylifera*) in the Palmetum.

During the conflagration on December 16, the Thomas Fire actually reached Lotusland. Thankfully the damage to the garden was minimal because firefighters, whose identities we may never know, were stationed at Lotusland and heroically saved it from destruction. The firefighters discovered a few spot fires, but extinguished them quickly. A date palm (*Phoenix dactylifera*), in the Palmetum will forever bear the scar of the fire that scorched its trunk.



The mess in the gardens and buildings is extensive and our 12 days of mandatory evacuation took a toll on all our operations, garden projects, Gifts for the Garden appeal, and planning for next year. As we spend much of January cleaning up and getting things back in order, we also look forward to seeing you back in our gorgeous garden in February.

ROSE CARE Timing is Everything

Those of us with rose gardens all want gorgeous flowers each spring and plenty of blooms throughout the summer. A successful rose garden is all about timing and a calendar is a helpful tool in determining when to prune and when to feed.



Prune to remove the old wood.

Start pruning on January 15.

This is an important tradition for rose gardeners in order to give the plants a chance to start pushing new canes after most of the old wood is removed. If you prune too early you risk having canes form during the harsh winter weather when they could become damaged or stunted. Prune too late and the plants may have already started to grow on the old canes and you risk cutting off potential flower production.

Feeding around March 15 and July 15. The first annual feeding should be made when you see the first flower buds around the middle of March. Roses have plenty of strength to push the new year's initial cane production without being fed as they are doing their first growth utilizing internal reserves. Once



Remove blind growth shoots.

you see the canes getting longer and trying to make the first flower, that's the best time to feed with an organic fertilizer, then cover it with a dark, finely ground mulch. The feeder roots are very active and are ready to receive nourishment. If you feed too early the material may not be absorbed and it is mostly wasted before the roses can use it. Feeding too late might short change the new year's flower production. The feeding process should be repeated in July.

Blind growth removal around June 1. Blind growth refers to short shoots that never form into flowers. An important technique for continued summer flowers is removing this blind growth. Identifying these shoots is critical so you can remove them and enable the plant to put its energy into the shoots that become beautiful flowers.

Following a calendar can go a long way in guaranteeing a great rose garden. With keen observation and just a little bit of timing, anyone can master the basics of rose care. —Corey Welles



PLANTS IN THE INSECTARY

Plants in our Insectary Garden are chosen for optimum effectiveness, but they also provide spectacular displays of color. There is always an impressive bloom and abundant insect activity in this garden that is integral to our sustainable horticulture program. We encourage you to include some of these gorgeous plants into your garden to create your own biodiverse environment. Below are a few plants we love, look on our website for more.

1. *Asclepias curassavica* - Milkweed

Milkweed is perfect for Monarch butterflies.

2. *Buddleia davidii* - Butterfly Bush

Butterfly Bush is great for nectar and attracts several types of butterflies.

3. *Achillea millefolium* - Yarrow

Yarrow is very good for tiny beneficial wasps.

4. *Gaillardia aristata* - Blanket Flower

Blanket Flower attracts many native bee species.

5. *Coreopsis tinctoria* - Plains Coreopsis

Coreopsis attracts all sorts of native bees.

6. *Echinacea purpurea* - Purple Coneflower

Coneflower is great for native bees and butterflies.

VOLUNTEER AT LOTUSLAND

THERE ARE MANY WAYS YOU CAN CONTRIBUTE YOUR TIME AND TALENTS AS A VOLUNTEER!

Volunteering at Lotusland is a wonderful and rewarding way to contribute to one of the world's finest gardens.

Join us for a Volunteer Orientation on Tuesday, March 6 from 9:30 - 11:00 AM. For more information and to make a reservation to attend, please contact Volunteer Coordinator, Kitty Thomassin at 805.969.3767, ext. 112 or kthomassin@lotusland.org.

Lotusland Volunteer Opportunities

• Events and Hospitality

Provide hospitality support for events and assist with *Lotusland Celebrates* and *LotusFest*.

• Garden Volunteers

Enjoy hands-on horticulture work in Lotusland's magnificent gardens.

• Garden Docents

Welcome visitors and lead tours to provide information about Lotusland's history and collections.

• Library and Archival Work

Support shelving, archival filing, scanning and cataloging, research, and other seasonal projects.

• Communications and Marketing

Research and writing for exhibits, newsletters and other projects.

• Fourth Grade Outreach Docents

Provide specialized guided garden tours for students and classes.

• Visitor and Member Services

Support our operations with administrative assistance.

International Conference *Utowana*

CIENFUEGOS BOTANIC GARDEN, CUBA

LOTUSLAND'S STATUS AS A WORLD CLASS GARDEN IS WELL KNOWN.

Less apparent are our international collaborations and prominence in the scientific community. We have maintained a strong international presence during our 25 years as a public garden by attending conferences ranging from cycad biology to plant conservation. The knowledge gained and the professional relationships fostered make these experiences invaluable.

Last November I had the opportunity to represent Lotusland at the International Conference *Utowana* at the Cienfuegos Botanic Garden in Cuba. The theme, “building botanical bridges,” is more relevant than ever as botanical networks become increasingly interconnected and function as collaborative units that work

across borders. In fact, botanic gardens hold more than 30% of known plant species in their living collections and 40% of those are known to be threatened.

The Cienfuegos Botanic Garden is the oldest in Cuba, having been established 116 years ago originally as a collaboration with Harvard University. As the garden was evolving in the early 1900s, a scientific expedition arrived in Cuba on a ship called the *Utowana* carrying the renowned North American plant explorer David Fairchild. Many of the important plant collections at Cienfuegos can be attributed to his explorations. Fairchild and the *Utowana* “established a bridge for exchange” and the conference was named in honor of these contributions.

The conference covered many topics from plant collections management and history of plant collecting in the Caribbean and Central America, to Cuban floristic studies and horticultural practices in public spaces. I was honored to open the conference with a presentation on the “Importance of Botanic Gardens and Their Living Collections.” I emphasized Lotusland’s collections management techniques, the mission of botanic gardens to raise conservation awareness and the value of sharing plant material between institutions to help assure the continued survival of threatened species.

Two months prior to the conference Cuba was raked by Hurricane Irma, leaving a devastating swath of destruction. I had planned a trip to visit *Hemithrinax ekmaniana*, an endemic Cuban palm with a distribution restricted to three *mogotes*, or limestone hills, but unfortunately it was directly impacted by Hurricane Irma and the area became practically impossible to access. This palm is believed to have



TOP: Paul Mills and Julio Pavel of Sancti Spiritus Botanic Garden meeting for the first time after more than a year of discussion about the critically endangered Cuban endemic tree, *Erythrina elenae*. Lotusland has one plant of this species in the nursery. BOTTOM: The unique petticoat palm (*Copernicia macroglossa*) is endemic to western and central Cuba. Lotusland has two small plants in the Palmetum.

survived the storm. Fortunately, it is also found in the collections of eight botanic gardens, including Cienfuegos, but six of these gardens were also damaged by Irma. It is crucial for us to protect these threatened species, but in this case the gardens themselves proved vulnerable. From a practical point of view, the more widely the plant is distributed the better for long term survival.

At the end of the conference we vowed to continue the construction of the bridges we had begun. — Paul Mills



Immense royal palms (*Roystonea regia*), the national tree of Cuba, line the entrance to Cienfuegos Botanic Garden.

JAPANESE GARDEN RENOVATION

Breaking Ground!

ON A COOL AND DRIZZLY DAY in November, nearly 100 people gathered by the Torii entrance to the Japanese Garden to celebrate the official groundbreaking of the Japanese Garden Renovation project. Among them were donors, Trustees, guests of honor, including the late Frank Fujii's family and Ozzie Da Ros, and the team that will work on the project over the next 15 months. We celebrated with the traditional Japanese ceremony of *kagami biraki*, the breaking of a sake cask lid, or "opening the mirror," and a sake toast. Then while a Japanese flutist played, the drizzle began, making the garden and the afternoon that much more enchanting.



The groundbreaking was made possible by the many donors who have given nearly \$3.8 million to support the Japanese Garden Renovation – over 82% of our goal of \$4.6 million. Although we have begun the construction phase of the project, we continue to seek donor support to raise the final \$808,500 we need to reach our goal.

While Lotusland is closed, construction is proceeding in earnest. By the time we open again in February, excavation of the ponds and dismantling of the waterfall, stream and old plumbing will be completed, and all will be readied to receive new plumbing and liners. A deep and wide trench will have been dug through the Main Drive to install the plumbing to a large vault located on the other side. The vault will house the pumps and filters that comprise the bio-filtration system. With the cooperation of weather, we expect to have the water features completely rebuilt by April or May. After that, grading of the garden will begin so that the paths may be rebuilt.

The scheduled date for completion of the entire project is March 2019. We will provide regular updates about the project in our printed and electronic newsletters, and you can follow our progress via [facebook.com/lotuslandjapanesegarden](https://www.facebook.com/lotuslandjapanesegarden) and on our website at lotusland.org.

JAPANESE GARDEN DOCENT CONTRIBUTORS

Anonymous (2)
Christine Allen & Gerald Jacobs
Carol & Tom Beamer
Ms. Arlene Belmontes
Ms. Constance Campbell
Lisa Cobb
Roberta & Matthew Collier
Ms. Linda Conger
Penny Conlin
Lynne & Bob Cummings
Mr. James Cunningham
Randi & Rick Danson
Cara DeAmicis
Larry Disharoon & Diane Galvan
Tracie Doordan & Kate Doordan
Klavan
Nancy Lauer Dorey
Rachael Douglas
Ronald & Rebecca Garber
Ms. Shelley Gault & Mr. John O'Connor
Mary Glink
Gayle Golden
Dr. Leonard Grabowski
Christine & David Gress
Dr. & Mrs. Nic Guddal
Dr. Douglas Hall
Mrs. Pamela Hawes
Joan & Peter Hazell
Deborah & James Heaps
David & Charlene Heinz
Kathy Hulick & Phil Blake
Claire Johnson & Ronald Rice
Marcia Keen
Bruce & Barbara Kennedy
Donna Kirkmire
Minda & Guy Kraines
Phoebe & Harry Linden
Thomas Morey & Michael Jameson
Ms. Jeri Moulder
Ms. Christine Nail
Bernadine Oberst
Bobbie Offen
Janet Patton
Ms. Hilary Peattie
Suzy Pelovsky
Al Ronyecz
Susan Root
Suzanne Rubin
Patricia Sheppard & Ernie Witham
Holly & Lanny Sherwin
Dr. Michael Steinfeld
Donna Stovesand
Ms. Hillary Tentler
Janice & Rob Thomson
Terry & Cricket Twichell
Sherman Vincent
Ms. Cristi Walden
Ginette & Steve Watson
Carol & Jerome Weingartner
Crystal & Clifford Wyatt



LEFT: Gwen Stauffer accepts a Japanese Garden renovation contribution from Christine Garvey, Director of MUFG Union Bank and Vince Caballero, Regional Manager of Union Bank. **RIGHT:** Ozzie Da Ros and Dorothy Fujii, wife of the late Frank Fujii, sharing some memories of building Ganna Walska's Japanese Garden.

SPIRIT OF LOTUSLAND

OUR SECOND ANNUAL SPIRIT OF LOTUSLAND cocktail competition brought together six different mixologists, with The Imperial of Goleta taking both the People's Choice Award and the coveted Spirit of Lotusland Award. Expert judges and sponsors of the event Ian Cutler, owner/distiller of Cutler's Artisan Spirits, and Anthony Caspary owner/distiller of Ventura Spirits, along with guest judge Diana Starr Langley, and our CEO Gwen Stauffer had the nearly impossible job of picking a winner. With only a one point difference between first, second and third place, The Imperial took home the gold, while Alcazar (last year's champion) took silver and Loquita was close behind with bronze. The Lark, Les Marchands and the Bobcat Room, with help from The Little Kitchen, were also inspired by the garden, creating cocktails and single paired bites that mirrored the amazing colors, flavors and Spirit of Lotusland. Many thanks to event sponsors Belle and Daniel Cohen and cheers to all our contestants, judges, sponsors and each of you who attended for making it such a spirited day in the Garden!



TOP: Event judges were Diana Starr Langley, Anthony Caspary, Ian Cutler and Gwen Stauffer.
BOTTOM: The Imperial of Goleta won both the People's Choice Award and the coveted Spirit of Lotusland Award. The Imperial team - Scott Wallin, Kelli Martinez and Kyle Eckert



LEFT: Lotusland Curator Paul Mills with Liz and Chris Mankey and Satie Airamé enjoying an amazing day in the garden. **RIGHT:** David Tufenkian, Tony Krock and Mike Tully take a break on Lotusland's Great Lawn.

Exceptional Plants

LOTUSLAND AUCTION & SALE

A WARM AFTERNOON ON THE LAWN was the perfect setting for Lotusland's sixth annual signature plant auction. Over 270 plant-loving guests enjoyed the ultimate plant party with wine, beer, specialty cocktails and great food while they explored an extensive silent auction with rare, unusual and very special plants. The highlight of the afternoon was a rousing live auction led by event chair Jeff Chemnick featuring 12 of the most unique specimens. Our largest to date, the 2017 auction included more than 200 lots with plants from Lotusland's collection as well as donations from generous plant collectors. This popular event raised more than \$35,000 to support the maintenance of Lotusland's gardens.

Special appreciation to our event sponsors.

CURATORS

Belle & Daniel Cohen
Connie & John Pearcy

CONNOISSEURS

Daniel Bifano & Allan Brostrom
Eileen & Alex Rasmussen
Susanne & Gary Tobey

GROWER

Anitra P. Sheen

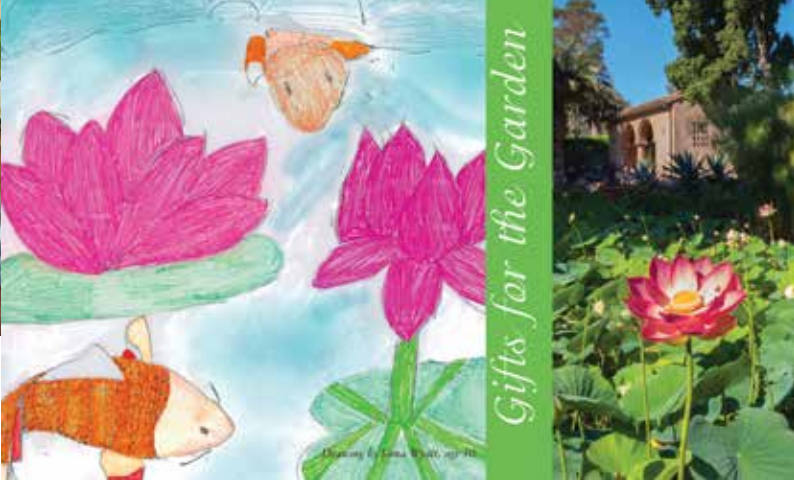
Special thanks to all the generous people who donated exceptional plants.

Thomas Baker-Rabe
Randy Baldwin,
San Marcos Growers
Duke Benadom
Robert Bett, Plant Haven
Albert Black-Goldin
John Bleck
Pat & Ron Caird
Paul & Laurel Carlisle
Jeff Chemnick & Satie Airamé
Tom Cole, Cold Spring Aloes
Diane Dunhill
Andy Easton,
New Horizon Orchids

Jim Foster & Sandy Russell
Brent & Suzie Frietas,
Eye of the Day Garden Design Center
Matt Frost
Cameron Gardner
Hannah-Bick, UCSB
John Goetz, San Simeon Nursery Landscapes
Dylan Hannon, Huntington Botanical Gardens
Tim Harvey
Jim Henrich, Los Angeles County Arboretum
Chris Hevesy
Jasper Jones
Connie Kelly
Pamela Koide Hyatt,
Bird Rock Tropicals
Tony & Holly Krock
Zarac Lompart, West Inland Design
Sarmis Lutens
Chris Mankey
Jeremy Spath & Hunter May, Rancho Soledad
Paul Mills
Jeff Moore, Solana Succulents
Burl Mostul, Rare Plant Research
Eric Nagelmann
Jo O'Connell, Australian Native Plants
Ernie Pfadenhauer

Art Posh
Chris Potter
Jesus Ramirez, Mt. San Antonio College
Paul Redeker, San Diego Botanic Garden
Nathan Revard
Doug Richardson, Drylands Farming Company
James & Lauris Rose, Cal-Orchid
Richard Ross
Joel Sachs, Ice Blue Cycads Nursery
Mary Sadeghian
Tom Schoenberg
Seven Day Nursery
Joe Stead, Orange Coast College
Cristi Walden, Jack & Charnee Stevenson, Seacrest Nursery
Carol Terry
John Trager, Huntington Botanical Gardens
David & Eileen Tufenkian
Mike Tully, Terra Sol Garden Center
Dennis Wheeler

Save-the-date for this year's Exceptional Plants on Saturday, October 6.



SUPPORT THE 25-YEAR TRADITION OF INSPIRING WONDER FOR THE NATURAL WORLD

As stewards of Madame Walska's historic estate, we preserve and enhance the unique gardens and collections of this living museum.

In each step that we take to fulfill this mission, we rely on the help of our closest garden friends. Please consider a Gift for the Garden, with a contribution to Lotusland.

Gifts to the Garden play a key role in helping us continue to be a source of joy, learning and discovery for people of all ages. Contributions are crucial to help Lotusland provide numerous educational and enriching programs including:

- Garden Restoration
- Plant Conservation and Collection
- Youth Education Programs for more than 2,500 schoolchildren each year
- The Plant Health Care Internship
- Work Study for Santa Barbara City College Horticulture Students
- Sustainable Horticulture Programs
- Birding and Botanical Research
- Inspiration for Research, Art and Photography

We can't do it without you! All donations are 100% tax-deductible. Donate online at lotusland.org or to make a gift by telephone, call 805.969.3767, ext. 116.

DONOR PROFILE

Christopher Toomey



CHRISTOPHER TOOMEY was born and raised in Newton, Massachusetts. Growing up in New England, he was exposed to public gardens like the Boston Public Garden and Mount Auburn Cemetery. When he moved to Santa Barbara in 1993,

he discovered Lotusland as so many do, by driving by the pink walls and being curious about what was inside. After one visit, he was hooked. Chris moved to Southern California to further his work in the aerospace industry and made his home in Santa Barbara rather than in Glendale, where his company, Glenair, is based. He commutes by Surfliner and values Montecito as his home and community. "Lotusland is a jewel of greater Santa Barbara and the 25th anniversary is a wonderful milestone to note Madame Walska's great vision," Chris enthuses. His recent investment in the Japanese Garden endowment will help to sustain Lotusland for

"The gardens have never looked better. The future of Lotusland is very bright."

— Christopher Toomey

the future. With his gift he offered congratulations for the great progress on this important milestone project for the Garden and believes major improvements, like the restoration and renovation of the Japanese Garden, are a wonderful way to commemorate the anniversary of 25 years as a public garden. When asked about the future of the Garden, Chris said he believes that increased access to allow more visitors to enjoy Lotusland would benefit the strength and sustainability of the organization. Chris's philanthropy supports his values and Lotusland is sincerely grateful to be among his treasured institutions. In addition to supporting Lotusland, Chris is a generous benefactor of Santa Barbara Cottage Hospital, Monticello and the McMullen Museum at Boston College.

SAVE THE DATES

News for Members

AS WE SALUTE LOTUSLAND'S 25TH ANNIVERSARY, we are grateful to our members for their continued support and loyalty — many of you have been with us since the beginning. During this celebratory year we are introducing new opportunities that are sure to inspire, educate and entertain. Mark your calendar now and celebrate with us!

All Members

February 16 to May 19

Building a Botanical Nirvana: The Story of Lotusland opens the Lotusland season with an exhibition highlighting our fascinating past, present and future. On display in our Pavilion Gallery from February 16 to May 19. See page 16 for details.

Gardens in Paradise is a series of exclusive garden tours offering a rare opportunity to experience the most exquisite and stunning private gardens in our community. See page 15 for details.



**Thursday, June 21 and
Friday, June 22**

Members' Appreciation Barbecues will be held on two early evenings, June 21 and 22. These brand-new family friendly events will feature food, activities, entertainment and a cash bar. Details available in the Spring Newsletter.



Sunday, July 8

LotusFest! on Sunday, July 8 will feature a midsummer art exhibition, *Darshan: Photo Recreated Images of Hindu Gods and Goddesses*. Help celebrate with dozens of local vintners and craft brewers to toast the blooming lotus, enjoy tasty snacks and live jazz on the lawn.

Saturday, July 28

Lotusland Celebrates is our magical garden gala held on Saturday, July 28 to fête 25 years of inspiration and beauty.



Saturday, October 6

Exceptional Plants: Lotusland Auction & Sale will be on Saturday, October 6. This is our 7th annual ultimate plant party with an amazing array of one-of-a-kind rare species and an incredible afternoon in the Garden.

Friend Members

(\$295 and above)

A Feast with Friends is a new Lotusland late afternoon to dusk event premiering in September. This festive communal dining experience is limited to 120 Friend level and above members. Expect big surprises!

Garden Lover Members

(\$600 and above)



April, May and October

Focus Tours are our exclusive three-part educational series for *Garden Lovers*. A reception with Trustees follows each fun and informative garden presentation. Postcard invitations are mailed to detail the topics to be held in April, May and October. We will begin with *A Buzz in the Insectary* on Tuesday, April 10.

Saturday, June 9

A Summer Bounty Wine and Food Fête on Saturday, June 9 is an exclusive opportunity for *Garden Lovers* to enjoy the ultimate foodie experience of an exquisite gourmet wine-paired dinner on Lotusland's Great Lawn.

VOLUNTEER PROFILE

Jenifer McCurry



JENIFER FIRST CAME TO LOTUSLAND with her sister and aunt, the actress Dame Judith Anderson, to view the garden on a golf cart ride when Ganna Walska still lived here. Years later in 2001, Jenifer became a volunteer working in the garden. Her father was an artist, a rancher and an excellent gardener, and Jenifer's mother instilled in her a love of roses. Peace is Jenifer's favorite rose; Rose is her middle name; and she prunes the rose garden at the Carpinteria Valley Museum of History. She also loves begonias, ferns, succulents and orchids. In her home garden she has made a practice of collecting rain water to keep things thriving during the recent drought. Her next home project is a raised-bed vegetable garden.

Jenifer was born in Bristol, England. At the age of four her family came to the U.S. on the Queen Mary and settled in Carpinteria, California. She and her husband served in the Peace Corps on the north coast of Honduras in 1966. Their social welfare mission supported hot lunch program for schools. Working with fishermen and local bus drivers they also helped organize and set up local co-ops. Their first daughter Hilary was born in Honduras and this year they enjoyed a 50 year Peace Corps reunion in Santa Fe.

Jenifer taught Spanish, French and German at Midland school in Los Olivos for 14 years and English as a Second Language for 12 years with Adult Ed. She also tutors at the Carpinteria library under Santa Barbara library system's literacy program.

Seeing people's amazement and delight during their tours is a very rewarding part of Jenifer's volunteer work at Lotusland. She also enjoys watching the seasonal changes, and the ongoing preservation of our iconic garden makes her happy and keeps her coming back, especially to her favorite "sea of tranquility," the Fern Garden.

THANK YOU TO OUR GARDEN LOVERS MEMBERS

CHAMPION

Craig & Susan McCaw

VISIONARY

Mr. & Mrs. Larry Durham
Ted & Coleen Friedel

STEWARD

Andrea Cairone
Linda & Fred Gluck
Katherine Kims & Eric Ng
Mercedes Millington & Jack Mithun
Connie & John Pearcy
Lady Leslie Ridley-Tree
Patty & Michael Rosenfeld
Lynda Weinman & Bruce Heavin

GUARDIANS

Tom Barton
John & Tania Burke
Sophie & Derek Craighead
Mr. Arthur R. Gaudi
Cyndee Howard & Lesley Cunningham
Kim L. Hunter & Paulo P. Lima, Ph.D.
Carole MacElhenny
Suzanne & Gilbert Mathews
Dennis McGowan & Rudie van Brussel
Mr. & Mrs. Gary Uwé Rollé
Jeffrey F. Romano & Stan A. Shayer
Stephen P. Schaible & Daron S. Builta
Mrs. Judy Shea
Mrs. Anitra Sheen
Susanne & Gary Tobey
Mr. Christopher J. Toomey
Alison & Lyle Turner

The Lotus Society

Make a lasting contribution to Lotusland.

Contribute to Lotusland's future by planning for a special gift such as a bequest in your will or a trust. There are many creative and flexible planned giving options that can benefit you and the Garden.

The Lotus Society recognizes and honors those friends and Members of Lotusland who have made a commitment to the future of this institution by including the Garden in their estate plans. For more information on how these gifts might work for you, please call Rebecca Anderson 805.969.3767, ext. 104 or randerson@lotusland.org.

LOTUSLAND ANNUAL MEETING AND RECEPTION

Monday, March 12
4:00 to 6:00 PM

Please join us for **Lotusland's Annual Meeting** and State of the Garden address delivered by Gwen Stauffer, Lotusland's CEO. The meeting recaps the highlights of 2017 and Mick Thomas, Board Treasurer delivers a financial report. A reception will follow. For reservations please call Genny Bolton, 805.969.3767, ext. 105.

WISH LIST

Help Make Lotusland's Wishes Come True

Spray Rig for Compost Tea: Rears Model PLR 100

Compost tea spray rigs are a vital component in our plant health program. Our existing equipment is aging and the rigors of heavy use make them in need of constant and



costly repairs. This new rig will increase efficiency and be a more reliable piece of equipment for the garden staff. It will help us spray compost tea for years to come. \$6,600.

Golf Cart: \$5,000 Remaining

We have raised more than half of the \$10,800 needed to purchase a replacement cart. This new cart will allow Lotusland to more fully serve the needs of our mobility challenged members and guests with improved safety and reliability. Another \$5,000 will fully fund the purchase of a new cart.



Pipe Replacement Project

Invest in replacing the failing 100-year-old pipe that connects our well to our reservoir. We have raised half of the funds and need \$20,000 to complete the

project. In lieu of an expensive trenching project, a new pipe with a smaller diameter will be threaded through the original to ensure the continued flow of water. The new HDPE pipe is highly resistant to corrosion, will not leak and will last 100 years or more. Gifts and grants of all sizes support these wish list items. To learn more about this project and help support its completion, please contact Tyler Diehl, Director of Gardens and Facilities at 805.565.1310 or tdiehl@lotusland.org.

TO DONATE, please contact Rebecca Anderson, Director of Development, at 805.969.3767, ext. 104 or randerson@lotusland.org. Thank you to our generous members who support our Wish List items. They make a big difference in our day-to-day operations, and we are very grateful.



FOURTH GRADE OUTREACH

Much More than a Field Trip

TWENTY YEARS AGO Lotusland started a pilot school program based on the life science curriculum guidelines for fourth grade. Started in 1998 with nine classrooms from four Santa Barbara schools, the Fourth Grade Outreach Program has grown to serve nearly 3,000 students and chaperones from Carpinteria to Santa Maria in the 2016-17 school year. The program is a partnership with each school, with no cost to the schools or students, thanks to generous donor support.

The Fourth Grade Outreach program integrates California's fourth-grade life science curriculum into a specialized program specifically designed to provide the greatest possible impact in improving each student's STEAM (science, technology, engineering, arts and mathematics) comprehension. Students study the enhanced curriculum presented to them by staff or docents in the classroom, and then visit Lotusland for docent-led field study in the garden where they have a deeply immersive, hands-on experience with plants. Students are encouraged to touch and connect with plants native to diverse habitats to emphasize concepts they learned in the classroom, such as structural adaptations of plants, plant habitats, pollinators and pollination, photosynthesis, plant and animal interdependence and conservation. Critical thinking games, writing and art projects integrate other disciplines in support of STEAM comprehension.

To support Lotusland's Fourth Grade Outreach, and help us teach these young students to understand the importance of plants to life on earth and to be stewards of our natural environment, contact Rebecca Anderson 805.969.3767, ext. 104 or randerson@lotusland.org.



Gardens in Paradise

A rare opportunity to experience the most exquisite and stunning private gardens

IN CELEBRATION of 25 years, Lotusland presents *Gardens in Paradise* — a rare opportunity to experience the most exquisite and stunning private gardens in our community. This year-long, six visitation series begins on Thursday, April 26. The extraordinary inaugural event begins with a cocktail reception at an historic 13 acre George Washington Smith Italian Renaissance mansion and garden. Guests will then move to a contiguous property combining breathtaking panoramas, hundreds of roses, and water features sculpted to complement the rolling landscape. Our exploration is enhanced by the energetic and entertaining Tom Carruth, Curator of the rose collection of Huntington Gardens. He will delight and educate participants with a presentation as one of the world's foremost rose experts. Guests will then be ushered into a gorgeous tent at the peak of a knoll for an exquisite seated dinner. Participation is limited and the cost for this first of the series is \$1,000 per person.

The second visitation of the Gardens in Paradise series is set for Thursday, May 31. We will tour two magnificent Montecito properties; one that plays historically in the Golden Age of American Gardens and the other a contemporary

interpretation seamlessly blending past and present. The third event will be Saturday, June 23, when we will explore a 40-acre hilltop modern masterpiece and a lush 60 acre tropical hideaway. All tours will feature a noted garden expert for greater understanding of the history and horticulture of the properties and a social/culinary component.

Cost for second and third tours is \$750 and the number of participants is limited in all events to maintain the intimacy of these visits. Dates and details of the next three tours will be available soon.

The series has been hallmarked by a partnership with The Garden Conservancy and the generosity of the host/owners who are fully underwriting all expenses in honor of Lotusland's 25th anniversary. Angel sponsorship for all six events is available at \$10,000. Sponsors at this level will receive two tickets for every event of the series.

To make a reservation or for more information, please call 805.969.3767, ext. 104.

In respect of the owners' privacy, details of the visitations will be shared individually by a member of the Garden Advisory Committee once potential registrants express serious intention to participate.



GARDENS IN PARADISE ADVISORY COMMITTEE

Co-Chairs:

Daniel Bifano and Dorothy Gardner

Marc Appleton

Wayne Covert

Derrick Eichelberger

Puck Erikson

Bruce Gregga

Joseph Marek

Eric Nagelmann

Nancy Goslee Power

Mark Rios

Susanne Tobey

Susan Van Atta

UPCOMING EVENTS



Saturday, January 27 • 1:30 to 3:30 PM **Winter Walk**

IN THE WINTER MONTHS the amazing blooms of the aloes make the garden come alive in a most colorful fashion. Enjoy this unique educational opportunity to see the garden while Lotusland is closed for public tours. Spend an afternoon enjoying more than 140 species and cultivars of aloes on a crisp winter day. This is a special privilege for Lotusland members and their guests only. Admission is \$35 for members and their guests (\$15 for children 3-17 years old). Reservations are required and may be made by calling 805.969.9990.

Saturday, February 10 • 9:00 to 11:30 AM **Morning Bird Walk at Lotusland**

JOIN LOTUSLAND RESEARCH ASSOCIATE Jeff Chemnick, with bird expert Steve Timbrook, as they lead the annual bird walk. The morning tour focuses on seeing as many species as possible. This is a wonderful opportunity for both experienced birders and beginners to discover our feathered friends that spend the winter in Santa Barbara. We have several pairs of binoculars to lend if you don't have your own. Cost is \$55 for members and \$65 for members' guests. For questions or reservations, please call 805.969.9990.



Friday, February 23 ***Building a Botanical Nirvana:*** ***The Lotusland Story***

TO BEGIN LOTUSLAND'S 25TH SEASON, we kick off a year-long celebration with our main exhibit, *Building a Botanical Nirvana: The Story of Lotusland*. On display in the Pavilion, visitors are able to view the fascinating history of Lotusland and learn about all those who contributed to making the garden what it is today. The exhibit will run through May 19. Reservations are required and may be made by calling 805.969.9990.

LOTUSLAND GRATEFULLY ACKNOWLEDGES DONATIONS

September, October and November 2017

THE LOTUS SOCIETY

ENDOWMENT CONTRIBUTIONS

Daniel Bifano & Allan Brostrom
Alisa Freundlich
Lisa & Richard Ross
Christopher J. Toomey
Estate of Michael Towbes

GRANTS AND SPECIAL PROJECTS

FOURTH GRADE OUTREACH PROGRAM

Coeta and Donald Barker Foundation
William & Alexandra Daugherty *in memory of
LuAnn Daugherty*
Kurt Koenig
Hilary Peattie
Ron & Stacy Pulice
Jeffrey F. Romano & Stan A. Shayer
Jessica Smith & Kevin Brine
Anonymous

SUSTAINABLE PLANT HEALTHCARE INTERNSHIP

John Percival and Mary C. Jefferson
Endowment Fund

WATER SYSTEM REPAIR

Stanley Smith Horticultural Trust

GOLF CART FUND

Robert Meadows & Janice Potter

OPEN PATHWAYS

Southern California Edison
Wood-Claeysens Foundation

SANTA BARBARA CITY COLLEGE WORK EXPERIENCE PROGRAM

Towbes Foundation

SYCAMORE CANYON SCREENING PROJECT

Susan & Peter Cheney
Gail & Roger Haupt

VISITOR CENTER IMPROVEMENTS

Beverly & Michael Steinfeld

JAPANESE GARDEN RENOVATION

Anonymous
Christine Allen & Gerald Jacobs
Ann Jackson Family Foundation
Gwen & Henry Baker
Daniel Bifano & Allan Brostrom
Mary Jane & Steve Buchanan
Sallie & Curt Coughlin
Cyndee Howard & Lesley Cunningham
LLWW Foundation
Jenifer McCurry
Mosher Foundation
Judith Robertson
Sandra & Alonzo Talamantes
Richard Tentler
Christopher J. Toomey
MUFG Union Bank Foundation

ADOPT A LANTERN

Marilyn Fordney & Alex Havasi *in memory of
Toshio James Takahashi*
Mitchell E. Opalski
Sandra Russell & Jim Foster

GIFTS FOR THE GARDEN

Anonymous
Rhett Adams
Della Addison
Nancy & Jesse Alexander
Amazon Smile Foundation
Mr. & Mrs. Robert S. Anderson
Mr. & Mrs. Marc Appleton
Ann Griffith Ash
Pamela & Michael Avnaim *in memory of
Matalie Merritt*
Sydney Baumgartner
Ann & Robert Benham
Hiroko Benko
Patricia A. Benner
Susan Bennett
Daniel Bifano & Allan Brostrom
Genny & John Bolton
Robert & Carol Bowen
Paul Burke
Connie & Nigel Buxton
Judy Cardinal
Alicia & Jeff Carnevali
Chris & David Chernof
Mr. & Mrs. Andrew Chou
Belle & Daniel Cohen, Little One Foundation
Marcia & John Mike Cohen

Sallie & Curt Coughlin
Mr. & Mrs. Geoffrey Crane
Mr. & Mrs. Thomas Crawford, Jr.
Sandra & Patrick Crotteau
John & Diana Crummey
Noel N. Daily
Mr. & Mrs. William M. Daugherty
Thomas Dent & Jane Rosenberg-Dent *in honor
of Minda Kraines*
Barbara Dixon
Sarah Stapleton Dobbs
Rachael Douglas *in honor of Kitty Thomassin*
Suzanne & Dennis Elledge
Margo & Robert Feinberg
Mr. & Mrs. Ian Fisher
Turner Fishpaw *in honor of Eric Nagelmann*
Jay B. Fortman
Scott Francis & Susan Gordon *in memory of
Sally West Gordon*
Cathleen & Bill Freeman
Marilyn Freimuth
Michael Furner *in appreciation of Bob & Ginny
Guess, Carol Terry & David Heinz*
Heather Gananca
Dorothy & John Gardner
Adrienne Gary & Michael Dempsey
Eunice & Sarah Goodan
Randall & Jana Greer
Bruce Gregga & William Laman
Karin Haeusler
Antonie & Michael Heren
Terry Hurt & Sylvia King
Herman Jacobs
Rise Johnson
Judy & David Jones
Ronald Jones & Marie Hedtrick
Dorothy & Philip Kamins
Marcia Keen
Estate of Keith Birkenfeld
Bobbie & John Kinnear
Mark Krueger
Kathleen Lanford
Bambi & Chris Leonard
Sarah Jane Lind
Carl Lindbloom
Kathrine & James Lingle
Betsy & Bob Manger
Katherine & Michael Marchildon *in memory of
Patrick Marchildon*
John Margolis
Mary Lynn Marsell
Lorraine M. McDonnell & M. Stephen
Weatherford
Alaina McGrath & Thomas Wood
Patty & Ken McKenna
David Meldrum-Taylor & Barbara Robertson
Mimi Michaelis
Mary Lynn & Roger Murad
Debby & Danny Needham
Adele & Loi Nguyen
Jane & Paul Orfalea
Sandy & Robert Pappani *in honor of George Leis*
Connie & John Pearcy
Mrs. Andy Pearson
John A. Perez & Ann N. Lowry *in memory of
Mary L. Perez and Mary D. Lowry*

Hensley & James Peterson
 Kären Pick
 Paulette & Arthur J. Posch
 Victoria & Bruno Pozzi
 Jorge Ramirez
 Douglas Ratliff
 David Reichert & Diane Dodds-Reichert
 Linleigh & Russ Richker *in honor of Caroline
 Thompson's birthday*
 Catherine Rose & Melinda Burns
 Roy E. Crummer Foundation
 Caroline Rutledge *in memory of Mary Ellen
 Rutledge*
 Stephen P. Schaible & Daron S. Builta
 Joan & Tom Schaumberg
 Leslie Schneiderman *in honor of Caroline
 Thompson's birthday*
 George Schoellkopf & Gerald Incandella
 Judy Shea
 Annette Simmons & Jerry Fronterhouse *in
 memory of Harold Simmons*
 Mr. & Mrs. Grant B. Smith
 Valerie Spodoro
 Cynthia & Eric Spivey
 Gwen Stauffer & Mark Taylor
 Mr. & Mrs. Scott E. Suttner
 Sandra & Alonzo Talamantes
 Blaine & Erin Taylor
 Richard Tentler
 Hillary Tentler
 Caroline Thompson
 Carrie Tighe
 Polly Turpin
 Valentino USA
 Lisa Vanacore
 Leland & Diana Walmsley
 Mary Weisenberger
 Peggy P. Wiley & Wilson Quarré
 Jennifer Williams
 Dr. & Mrs. Stuart Winthrop
 Crystal & Clifford Wyatt

EVENT SPONSORS

SPIRIT OF LOTUSLAND SPONSOR

Belle & Daniel Cohen, Little One Foundation

EXCEPTIONAL PLANT AUCTION

Daniel Bifano & Allan Brostrom
 Belle & Daniel Cohen
 Connie & John Pearcy
 Eileen & Alex Rasmussen
 Anitra Sheen
 Gary & Susanne Tobey

IN-KIND DONATIONS

Abby Russel, Abby Rose Design
 Diane Dunhill, Diane's Plants
 Fruzina Keehn Jewelry
 Nancy & John Vasi

NEW LOTUSLAND MEMBERS

We welcome new members who joined in September, October and November 2017

GARDEN LOVER MEMBERS

GUARDIAN

Alison & Lyle Turner

ADVOCATE

Karen Hellmuth & Bob Vandersluis
 Bill & Leah Lloyd
 Nati & Michael Smith

GENERAL MEMBERSHIPS

FRIEND

Aliya Bayer & Jonathan Eagleson
 Drs. Susan Boiko & Martin Schwartz
 Liz & Kent Donnelly
 Sara Farrell & Daniel Feldtkeller
 Anne Freeman & Dave Ransone
 Jennifer & Jason Gagne
 Dr. & Mrs. Michael & Katherine Marchildon
 Sherman Merrill
 Victoria & Bruno Pozzi
 Jill Remy
 Deborah & Steve Schnepf

FAMILY

Kevin & Janis Benn
 Rochelle Bookspan
 Shane & Kristine Brown
 Stefanie Kast de Martinez
 Allison & Pierre Labarge
 Thomas & Becky Spodoro
 Rita Tate
 Lisa Vanacore
 Victoria & John Williams

DUAL

Jamee Aubrey & John Rowbottam
 Tom Ballinger & Jeong Lee
 Taylor & Brad Black
 Loretta & Steven Bradshaw
 Chris & Flavia Cane
 Jenny & Mark Dowling
 Elaine Felhandler & Susanna Steeneken
 Cameron Gillespie & Emily Brown
 Jeanene & Eric Goodman
 Natalie Harper & Colin Campbell
 Joan Henry & John Neugent
 Rob Hobden & Jenny Du
 Margaret & Garry Holdgrafer
 Terry Hurt & Sylvia King
 Ronald Jones & Marie Hedtrick

Jayne Lee & Daniel Salazar
 Ellen Lipp & Leo Pedretti
 Kim & Otto MacLin
 Dr. & Mrs. John & Vicki Micha
 Jill & Paul Morison
 Connie & Alison Petry
 Edward Robinson & Karl Leone
 Evelyn & Edward Savage
 Stephen & Linda Skinner
 Willow Sprout & Brian Schoneberger
 Sue & Scott Suttner
 Sara & Alonzo Talamantes
 Sharon & Ted Temple
 Sharon & Kelly Tibbitts
 Terri Tobin & Alexa Thurman
 Hilary Tulloch & Marilyn Tulloch
 Christi VanCleve & Bill Roschen
 Jonathan & Carl Ann Werner
 Annette Williamson & Mike McColm
 Kathleen & Richard Zacky

INDIVIDUAL

Linda Bedrosian
 Barbara Bock
 Hope Boland
 Patsy Clark
 Elizabeth Dentzel
 Bob Donovan
 Jonathan Downey
 Jolene Enns
 Tanja Gillespie
 David Gregg
 Donald Gregg
 Tena Holmes
 Samara Koffler
 Kristen Kolakowski
 Michael Landrum
 Andy Liepman
 Dana Livingstone-Lopez
 Nancy Lyons
 Tullula Mamikunian
 Robina Mapstone
 Cheryl McRae
 Mitzi Overland
 Michael Paquette
 Nicholas Perocco
 Dana Peterson
 Richard Pidduck
 Michelle Ralston
 Claudia Richardson
 Freeman Rockwell
 Charlotte Squarcy
 Sarah Stokes
 Richard Tentler
 Rosalie Zbyzenski

GARDEN SHOP

Cypress Inspired Art

The Monterey Cypress (*Hesperocyparis macrocarpa*) that stood on Lotusland's Great Lawn for over 130 years has found a new life in fine art crafted by local artists. These finely crafted pieces are available in both our Garden Shop and online store (lotuslandshop.org).

LEFT: Gorgeous shaped vase with glass insert made by local artist Joanne Wilson 8" x 3" \$50.

RIGHT FROM TOP: Stunning 8" square plate by local artist from Channel Islands Wood Turners Club \$80. Rough edge natural shape bowl by local artist Ray Higgins 4" x 2" \$50. Beautiful round bowl 8" x 4" \$150.



GARDEN LOVER MEMBERS RENEWING OR INCREASING LEVEL OF SUPPORT

September, October and November 2017

GARDEN LOVER MEMBERS

STEWARD

Connie & John Pearcy*

GUARDIAN

Mrs. Anitra P. Sheen

CONSERVATOR

Ms. Susannah Forest*
Mr. & Mrs. Richard Janssen
Michael MacElhenny & David Wine
Mr. & Mrs. Pete Muller

CULTIVATOR

Laura & John Bridley
Ms. Candace Dauphinot & Richard Brumm*
Bettina & Glenn Duval
Connie Frank & Evan Thompson
Mrs. Karen Garrolini
Amy Gordon*
Judy & David Jones
Mr. & Mrs. William Pulice*
Dr. & Mrs. Richard & Lisa Ross
George Schoellkopf & Gerald Incandella
Ken & Ann Stinson
Pam & Russ Strobel
Nancy & Tom Upton*
Mr. & Mrs. Milton Valera*

ADVOCATE

Brier & Kent Allebrand
Dr. & Mrs. David Bradford
Merryl Brown

Brett & Susan Caine
Jeff Chemnick & Satie Airamé, Ph.D.
Sallie & Curt Coughlin
Mr. & Mrs. Tim Dittmann
Jan D. Everote & Robert Claycomb
Sintija & Harry Felder
Michael Libow
Mr. & Mrs. J.C. Massar
Mr. Steven K. McGuire
Dave & Judy Messick*
Ms. Nancy Parker & Mr. Eric Stull
Mr. & Mrs. Garland Reiter
Mr. Mark Smith & Ms. Pamela Massey
Suzanne Tucker & Timothy Marks
Mrs. Deanne G. Violich*
Linda & Steve Wegener
Alex & Gina Ziegler

* Denotes Increased Support



695 Ashley Road
Santa Barbara, CA 93108

Address Service Requested

Nonprofit Org.
U.S. POSTAGE
P A I D
Santa Barbara
California
Permit No. 163

Winter 2018 Events

Many Lotusland events are open to non-members, so please let your friends and neighbors know about the great activities we offer.

Saturday, January 27

Winter Walk

1:30 to 3:30 PM

See page 16

Saturday, February 10

Morning Bird Walk at Lotusland

9:00 to 11:30 AM

See page 16

Thursday, February 16

Opening Day

*Garden reopens for public tours
after winter recess*

Saturday, February 23

Exhibit Opens

*Building a Botanical Nirvana:
The Lotusland Story*

See page 16

Monday, March 12

Lotusland Annual Meeting

4:00 to 6:00 PM

See page 13

Arrival Times for Members

AM Visit

Gate opens at 9:30
and closes at 10:00 AM.

PM Visit

Gate opens at 1:00
and closes at 1:30 PM.

Call 805.969.9990 for reservations.