

Ganna
Walska



LOTUSLAND

NEWSLETTER • FALL 2022

VICTORIA WATER LILIES

Queens of the Water Garden

LOTUSLAND CELEBRATES: BIRDSONG

A Wild and Soaring Success

PHOTO: Holly Huff



695 Ashley Road
Santa Barbara, California 93108
805.969.3767 • lotusland.org

BOARD OF TRUSTEES

Lesley Cunningham, *President*
Daniel Bifano, *Immediate Past President*
David M. Jones, *Vice-President*
Stephen P. Schaible, *Treasurer*
Crystal Wyatt, *Secretary*
Laura M. Bridley
Merryl F. Brown
Ron Caird
Geoff Crane
Rachael Douglas
Dorothy H. Gardner
Anthony Grumbine
Joseph Marek
Mimi Michaelis
Mari Mitchell
Connie Flowers Percy
Jeffrey F. Romano
Caroline R. Thompson
Rick Vitelle
Lisa Bjornson Wolf

LIFETIME HONORARY TRUSTEES

Merryl F. Brown
Robert J. Emmons
Arthur R. Gaudi
Kisa Heyer
Connie Flowers Percy

DIRECTOR EMERITUS

Steven Timbrook, Ph.D.

STAFF

Rebecca Anderson
Executive Director

Fiona Brennen
Director of Finance

Tyler Diehl
Director of Gardens and Facilities

Paul Mills
*Director of Conservation and
Curator of the Living Collections*

Adam Flint
Director of Operations

Lisa Stone
Director of Visitor Services and Public Programs

Patricia Sadeghian
Director of Development

Courtney Tentler
Director of Administration and Events

Printed by Jano Graphics
Designed by Leslie Lewis Sigler

LETTER FROM THE EXECUTIVE DIRECTOR

Dear Friends,

From summer to fall and from fall to winter, the change in the sun's position directly affects plants, animals, and humans alike. Plant life often slows as the winter solstice draws closer. This is a time to look inward as we evaluate and reflect on the year.



Autumn brings welcome changes to the Garden, particularly the promise of a shift in temperature and the hope that rains will return to nourish our parched land.

Lotusland's values are firmly rooted in environmental responsibility. Our biodiverse gardens and healthy soils work to buffer the impact of an increasingly warm, dry climate and vulnerable earth.

Ganna Walska Lotusland is a living laboratory for what is possible for plant health, especially in the face of a changing climate. Our sustainable horticulture program was developed

over two decades of experimentation and refinement. Organic growing and cultivation methods preserve our increasingly limited water supply. Healthy, nutrient-rich soil uses less water and promotes optimal conditions for vital plant growth. The result: lush and abundant flora and fauna that nurtures our spirits and protects the earth.

This fall we recognize nature's therapeutic gifts as we host hospice workers, educators, and our first wellness retreat to encourage well-being. In this newsletter you will read about the important example we are setting in caring for both our garden and our community. By enhancing this natural wonderland, we give so much to so many.

Thank you for being part of the magic that helps Lotusland flourish.

Sincerely,

Rebecca Anderson
Executive Director

MISSION

We preserve and enhance the unique, historic estate of Madame Ganna Walska, care for and improve its collections, and develop its conservation and horticulture programs, so they educate us, inspire us, and advance our understanding and appreciation of the importance of plants in our lives and in the life of the planet.

FALL 2022

Contents

- 2 Letter from the Executive Director
- 3 In Memoriam: Lady Leslie Ridley-Tree
- 4 Victoria Water Lilies
- 6 Horticultural Happenings
- 7 Collections News
- 8 Lotusland's Archives: Peter Riedel
- 9 Focus Tours: A Member Benefit
- 10 *Lotusland Celebrates*: Birdsong
- 14 The Lotus Society and Endowment Giving
- 14 Membership
- 15 Wish List
- 16 Upcoming Events
- 18 Welcome New Staff
- 19 Garden Interns:
Ann Mackey and Dana Halverson
- 19 New Volunteer Opportunities
- 20 Donor Appreciation
- 21 Support Botanic Gardens in Ukraine
- 22 Gifts for the Garden
- 22 Exceptional Plants
- 23 Community Education
- 23 Lotusland in the Media



Lady Leslie Ridley-Tree at Lotusland Celebrates. Her Lotusland legacy is raising awareness about the need to restore the Pink perimeter Wall, for which she led an initiative to restore its most damaged areas.

IN MEMORIAM

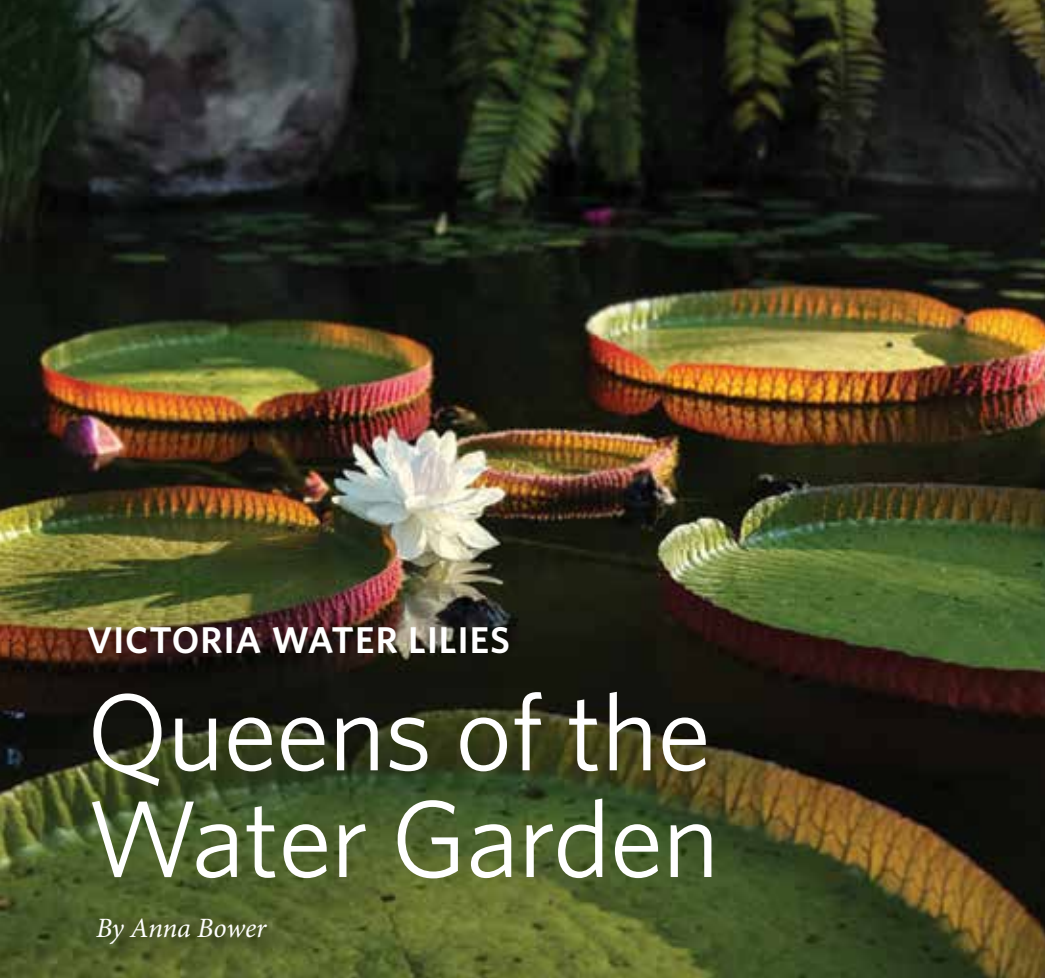
Lady Leslie Ridley-Tree

LOTUSLAND'S BOARD AND STAFF WERE DEEPLY SADDENED

to learn of the passing of one of our community's most generous and elegant benefactors, Leslie Ridley-Tree. We will miss her presence at Lotusland Celebrates and in the Garden. Her impact at Lotusland is lasting, as a member of our Honorary Council, and as a devoted supporter and friend.

Of her career in philanthropy, Ridley-Tree commented, "I don't think of myself as a philanthropist. I think of myself as having the enormous privilege of sharing."

*"I don't think of myself as a philanthropist.
I think of myself as having the enormous
privilege of sharing."* —LADY LESLIE RIDLEY-TREE



VICTORIA WATER LILIES

Queens of the Water Garden

By Anna Bower

WITH ENORMOUS SPINY PADS and mysterious night-blooming flowers, *Victoria* water lilies have long captivated those lucky enough to witness this fascinating plant. Despite various European explorers witnessing *Victoria* growing in the wild, it took 37 years for botanist John Lindley to officially established the genus in 1837, in honor of the newly appointed Queen Victoria. His verbose description of *Victoria amazonica* (then *V. regia*) led to royal patronages for what is now the Royal Horticultural Society, and saved the Royal Botanic Gardens, Kew from closure in 1838. The undersides of the pads inspired architectural roof elements at Sir Joseph Paxton's redesigned Lily House at Chatsworth, and later at the Crystal Palace he designed for London's 1851 Great Exhibition. Sir Joseph Paxton (1803 – 1865) was an English gardener, architect, engineer and Member of Parliament, best known for designing the Crystal Palace and for cultivating the Cavendish banana, the most consumed banana in the Western world.

In habitat, *Victoria* reside in the seasonally flooded backwaters of the Amazonian and Paraná River basins and there are three species in the genus: *Victoria amazonica*, *V. cruziana*, and the newly described *V. boliviana*.

Victoria at Lotusland

Lotusland's archives contain invoices and frequent correspondence between Ganna Walska and Dr. John T. Charleson, manager of William Tricker Inc., America's oldest water garden supplier (est. 1892). Madame Walska's letters include detailed horticultural inquiries



Gardener Holly Huff in the Water Garden

regarding the culture and care of many aquatic plants, including lotus, water lilies, and *Victoria*.

After four failed attempts (due to rot, cold temperatures, and possible animal attack), she succeeded in growing *Victoria* in the summer of 1955. Once she was able to grow these plants outdoors, Madame Walska was reluctant to treat them as an annual. She wrote in October of that year:

"It is not a question of economy but my philosophical outlook does not allow me to see a plant die. I must do my utmost to make it grow and then if I am successful, I have no regret knowing that I did what was possible to save it. Therefore, those four Victorias that I have, I will try to keep them in the hot-house with positive thoughts that they will survive, just as my positive thoughts and personal care made them grow wonderfully this summer."

Gardeners at Lotusland have propagated and cared for many *Victoria* ever since Madame Walska's first attempt. Over the years, Lotusland has acquired both plants and seed from a variety of aquatic plant nurseries, including William Tricker Inc.; botanical gardens with a focus on *Victoria* such as Longwood Gardens; and the International Waterlily & Water Garden Society (IWGS). Plants on display this year include an overwintered *Victoria* 'Longwood Hybrid' (*V. amazonica* × *cruziana*) from Longwood Gardens, and *Victoria cruziana* from Dr. Edward Schneider via the IWGS *Victoria* Conservancy seed distribution and Hughes Water Gardens.

Flowering Progression

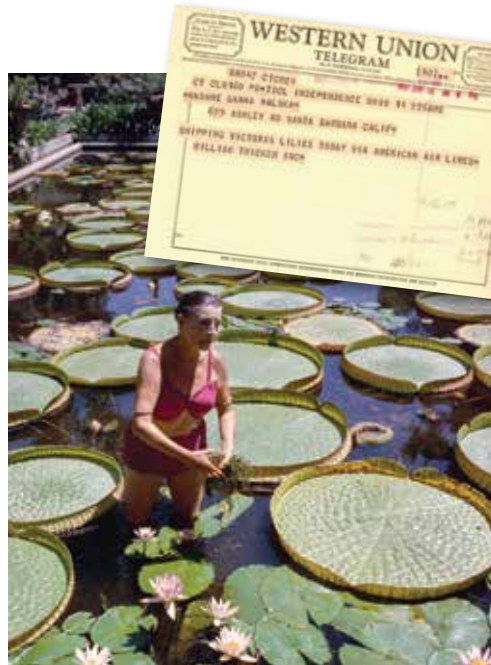
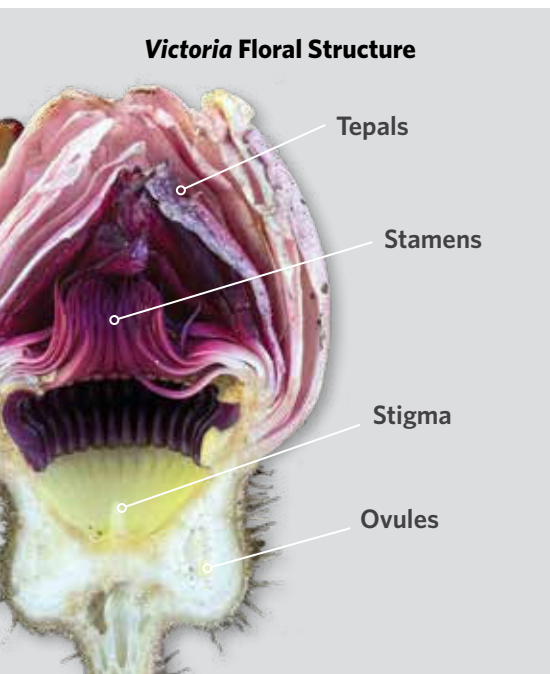
Victoria water lilies bloom in an intriguing floral display over two nights, with female and male structures developing consecutively. Buds develop underwater and rise to the surface covered by protective outer tepals. Starting in the afternoon before the big reveal, the inner tepals appear as a sliver of white on the flower bud. That night, the flower opens in its female stage, and the inner



chamber undergoes thermogenesis, releasing heat (90°F) and vaporizing a pineapple scent that is irresistible to scarab beetle pollinators. The beetles enter the floral chamber and become trapped inside, while dropping pollen onto the stigmatic surface from a previously visited flower, eating starch-rich floral parts, and mating. The foreign pollen germinates, fertilizes the ovules of the *Victoria*, and the beetles remain imprisoned until the following evening.

The next afternoon, the tepals take on a pink hue, and the flower begins to open further. That evening, the male parts of the flower (stamens) heat up to draw the beetles to the top of the chamber and open to release the pollinators — but not before covering them in pollen to carry to another *Victoria* flower in the female stage.

The next morning, the flower closes and sinks under the surface of the water. If pollination occurs, the spiny ovary enlarges to the size of a small melon. When ripe, the ovary bursts open and the seeds, covered in a buoyant mucilaginous tissue, float to the surface. As floodwaters recede, they lodge themselves in the mud to germinate the following season. The lifespan of *Victoria* in habitat is constrained by seasonal flooding and drought. Plants may live as annuals or short-lived perennials if supplied with available floodwaters.



ABOVE: Madame in the Water Garden 1957.
INSET: Shipping notification from William Tricker, Inc. relaying the message that Madame Walska's *Victoria* waterlilies had shipped. 1955 was the first year she was able to grow the plants successfully.

Propagation from Seed

Lotusland receives *Victoria* seed in the winter, and seeds are sown in community pots in a 5:1 topsoil:sand mixture and covered with coarse sand. The pots are submerged in a tank of warm water, and the seeds can take over a month to germinate. The first emerging leaf appears threadlike, and subsequent leaves take on a sagittate to oval to a rounded shape, eventually resembling the adult leaf shape with a raised lip. Once the true leaves emerge, the seedlings are repotted individually and receive their first fertilizer application. Plants are moved to a heated outdoor tank in May.

Because the Lotusland ponds do not receive supplemental heat, we wait until the water temperatures are warm enough to place the *Victoria* in the garden (minimum 72°F). Garden staff install the plants in the Water Garden and Cycad Garden ponds, where they remain until October. *Victoria* can be treated as annuals and regrown from seed each year, or can be overwintered in a heated tank.

Madame's legacy collections are renewed with the introduction of these stunning specimens.

A SPECIAL THANK YOU

Ganna Walska Lotusland thanks Dr. Edward Schneider for sourcing seeds and fostering this partnership between Lotusland and the International Waterlily & Water Gardening Society, a nonprofit organization of multi-national membership dedicated to the furtherance of all aspects of water gardens and their associated plants.

“Dr. Schneider has made a most important contribution to our knowledge of plants.”

— PROFESSOR SIR GHILLEAN PRANCE,
 FORMER DIRECTOR OF THE ROYAL
 BOTANIC GARDENS, KEW

Schneider has authored 125 scientific papers primarily on aquatic flora and made innumerable presentations on aquatic topics in the U.S. and throughout the world. His personal involvement in Lotusland dates back to visiting and conducting research for his doctoral dissertation and meeting Madame Walska. He was a master's degree advisor to Lotusland's former Curator of the Living Collection, Virginia Hayes.

Dr. Edward L. Schneider was awarded the IWLS Hall of Fame Award in 1995. He received the highest honor granted by the Botanical Society of America — their Merit Award in 1998. That Society recognized him for “outstanding contributions to the botanical sciences,” specifically for his skill as a researcher in vascular plant anatomy, as a teacher of plant sciences, and as a botanical administrator.

The Botanical Society of America encompasses all areas of plant biology, and with more than 3,000 members, is one of the world's largest organizations devoted to the study of plants and allied organisms.

Horticultural Happenings

CONNECTING TO NATURE

HOW CAN WE RECONNECT TO NATURE? We hear this a lot—people are striving to find a reconnection point to embrace nature and all its wonders. There's something almost primal that draws us back to the sounds and smells of natural places.

I recently spoke about sustainable horticulture to a software company offering enrichment classes to its employees. One employee asked, "How can I learn more about sustainable horticulture? I feel so disconnected from nature in my job." In hindsight I realized he was probably asking several questions: How can we reconnect with nature, how can we learn natural gardening methods, and how can I help the environment at the same time? Luckily sustainable horticulture's main tenets aim to do all three things and more.

Success with this system starts with an intense appreciation of nature and a commitment to harnessing the power of ecology to work for you in the garden. The core pillars of the approach are:

- **Beneficial Insect Ecology**
www.lotusland.org/greengarden/attracting-beneficial-bugs-birds-and-butterflies/
- **Organic Matter** (compost and mulches)
www.lotusland.org/greengarden/educational-programs-2/learn-compost/
- **Nutrients** (organic fertilizers)
www.lotusland.org/greengarden/building-sustainable-gardens/
- **Soil Biology** (worms, bacteria, etc.)
www.nrcs.usda.gov/wps/portal/nrcs/detailfull/national/soils/health/?cid=nrcs142p2_053860
- **Habitat Creation for Insects and Birds**
www.lotusland.org/greengarden/attracting-beneficial-bugs-birds-and-butterflies/

If you have all of these systems operating in your garden, everything falls into place very nicely. But you can see the list of things to learn is complicated. Where can you go to learn all about this in one concise resource? To learn about sustainable horticulture in our area, look no further than Lotusland. We provide solutions for the challenges of sustainable gardening —



Corey Welles speaks to the community about sustainable horticulture.

and it's all in one place. We teach seminars, conduct docent-led tours, offer volunteer opportunities, and provide information on our website covering the various facets of sustainable horticulture.

Lotusland is one of those rare places in the world where a special opportunity exists to learn and participate in all aspects of sustainable horticulture. The team at Lotusland has been hard at work for decades to fully realize this goal. Lotusland's broader mission is to conserve rare and endangered species, preserve the magnificent history of Madame Ganna Walska and the Lotusland property, and serve as the community's model for excellence in sustainable horticulture.

As I think about that original question, "How do I learn more about sustainable horticulture," I am encouraged by the knowledge that Lotusland is committed to providing the community with educational opportunities in an ideal sanctuary.

— Corey Welles, *Manager of Sustainability*



Corey Welles works with an intern in the Rose Garden.



COLLECTIONS NEWS

Plant Societies Promote Learning and Conservation

By Paul Mills, Director of Conservation and Curator of the Living Collections

FOR EVERY MAJOR PLANT GROUP represented at Lotusland there exists a plant society made up of passionate and dedicated experts working to increase the understanding and knowledge of specific plant groups. There is truly a society for all interests. Are you fascinated by gourds? Join the American Gourd Society and get their quarterly publication, *The Gourd Magazine*. Interested in Monstera and its relatives? Then the International Aroid Society is for you: palms, cycads, succulents, ferns, begonias, bromeliads — they're all covered.



Lotusland recently rejoined the International Waterlily & Water Gardening Society (IWGS) at the “botanic garden” membership level. The IWGS is a relatively young plant society, having been formed in 1984, but it has grown exponentially, as has interest in aquatic plants. The society’s website is filled with valuable information and resources such as a plant database with the aim to “provide a definitive source of information on all aquatic plants,” containing 3,000 plant names including Madame Ganna Walska’s namesake water lily, *Nymphaea* ‘Madame Ganna Walska.’ There is also a section on invasive species, of which aquatic plants are some of the most

notorious. The IWGS hosts an annual waterlily competition in which breeders show off their hottest new creations in five different categories, often won by the amazing growers of Thailand. The IWGS is also home to the *Nymphaea* (waterlily) and *Nelumbo* (lotus) Plant Registrations where the latest cultivars can be named and officially registered. Longtime Lotusland Curator Virginia Hayes acted as *Nelumbo* cultivar registrar for many years.

The IWGS is home to the Victoria Conservancy, whose purpose is to “distribute seed and serve as an information resource for growing these fascinating plants.” Some of the *Victoria cruziana* in the water gardens this year at Lotusland originated as seed from the Victoria Conservancy, acquired by and donated to Lotusland by IWGS Hall of Fame member, Ed Schneider. The Conservancy also writes that “*Victoria* is of special interest to the IWGS because of its uniqueness and use by botanic gardens and public institutions in capturing public interest in aquatic plants.”

Historically, Lotusland has been a member of about 20 different plant societies. With the myriad of different plants that are represented in Lotusland’s collections we are constantly striving to keep informed and in touch with the most current information about their cultural care, latest taxonomic and nomenclature changes, and recent discoveries. The society journals, conferences, and websites provide all of this information and more. And as a botanical institution, Lotusland has long shared information and expertise with local, national, and international plant societies.

INSET LEFT: Ganna Walska often hosted local and national plant societies at Lotusland. Here she is on the cover of the journal of the Cactus and Succulent Society of America welcoming a group of cactus and succulent experts as part of a national conference in 1953. **ABOVE RIGHT:** Lotusland is a member of many different plant societies that provide valuable botanical and horticultural information. We have also been actively involved with many of these groups, contributing to journals and giving presentations at meetings and conferences.

Peter Riedel and team excavate the original swimming pool, 1923



LOTUSLAND'S ARCHIVES

Peter Riedel: Plantsman and Garden Designer

SEVERAL YEARS AGO, a collection of old photographs of local landscape projects done by Plantsman and Garden Designer Peter Riedel were donated by his grandson to the Santa Barbara Central Library. Many of these images feature the work that Riedel, assisted by Ralph Stevens, carried out at *Cuesta Linda* — now known as Ganna Walska Lotusland. By closely studying these previously unseen photographs, interesting aspects of the estate's formal gardens developed during the E. Palmer Gavit era (1920-1937) were revealed.

Born in Holland, Peter Riedel (1873-1954) graduated from the Agricultural and Horticultural College at Wageningen in the Netherlands, coming to the U.S. in 1893. After owning a ranch in San Bernardino for several years, in 1902 he accepted a position to work in the gardens at the Hotel del Coronado.

Moving to Santa Barbara in 1907, Riedel established two nurseries in Montecito and was a partner with Horticulturist Dr. Francesco Franceschi's Southern California Acclimatizing Association. Others

associated with Franceschi were pioneer nurseryman Kinton Stevens, early owner of the Lotusland property (then called *Tanglewood*) and his fellow horticulturalist and neighbor Charles F. Eaton.

For the next 26 years, Riedel worked as a nurseryman, in addition to developing numerous Montecito estates, sometimes working alone but often as a contractor alongside Landscape Designer Lockwood de Forest, and Ralph Stevens, who was Kinton Stevens' son and the first paid superintendent of our city parks.

To visit several jobs underway at the same time, Riedel sped around on a motorcycle and was nicknamed "The Yellow Peril" because of his yellow jacket. Riedel retired in 1934 and while living in the former Franceschi house on Mission Ridge, became a respected teacher of landscape architecture and horticulture as part of the City of Santa Barbara school system.

Through the Riedel photographs, we learned that he and his team excavated the original swimming pool with its flanking lily ponds — now the Water Garden — and he was also responsible



Grading and building the Water Stairs, 1923



Completed Water Stairs, 1926

for the layout of the first Rose Garden, the Cypress Allee, and the Water Stairs.

A plaque honoring Riedel can be found at Franceschi Park.

— Rose Thomas, Lotusland Research Associate



2022 FOCUS TOUR SERIES: Senses *of the* Garden

SOUND: The Birds of Lotusland



GARDEN LOVER CIRCLES

Focus Tours: A Member Benefit

THESE INTIMATE EVENTS are a coveted, complimentary benefit reserved for our Garden Lover Circle Members (Cultivator Circle and above). If you wish to upgrade your Membership to join us for these subject specialty tours, please contact our Membership Department at membership@lotusland.org or 805.324.8425.

November 15 • 9:30 – 11 am

SOUND: The Birds of Lotusland

JOIN NATURALISTS Rebecca Coulter and Jeff Chemnick for a morning bird walk on the grounds of Lotusland. Beginning and experienced birders will appreciate the diverse and beautiful avian species that make their home in the gardens of Lotusland. Enjoy coffee and pastries with our naturalists after the walk.

What to bring: binoculars, hats, and appropriate footwear. Space is limited. Please RSVP to membership@lotusland.org or 805.324.8425.

December 5 • 2 – 4:30 pm

SIGHT: Treasures from the Archives

JOIN RESEARCH ASSOCIATE ROSE THOMAS and Archives Preservation Manager Natalie Sanderson for a fascinating afternoon. View a selection of items from the diverse collections of the Archives, and learn about the history and connection to Madame Walska.

Space is very limited. Please RSVP to membership@lotusland.org or 805.324.8425.



Lotusland Gratefully Acknowledges Garden Lover Circle Members at the *Guardian Circle** Level and Above

INNOVATOR CIRCLE

Sally Turner

STEWARD CIRCLE

Jeanne M. & Robert S. Anderson
Carrie Cooper & Glenn Griffith
Anthony Grumbine, Harrison Design
Dr. Steven & Penny Gundry
Lynda Weinman & Bruce Heavin
Susan & Robert Lief
Jill Taylor & Ray Link
Connie & John Pearcy
Dina & David Saalisi
Jackie & Jeff Schaffer

GUARDIAN CIRCLE

Ashley & Scott Adelson
Joseph Marek & John Bernatz
Belinda Menendez & Dominique Borno
Maureen & Edward Bousa
Stephen P. Schaible & Daron Builta
Tania & John Burke
Cabana Home
Pat & Ron Caird
Kaleb Bell & Adelita Candelaria
Marcia & John Mike Cohen
Coleen Richardson & Ted Friedel
Arthur R. Gaudi
Janice Feldman & Mitchell Grossman
Christine Bruce & John Hilliard
Lesley Cunningham & Cyndee Howard
Judy B. & David M. Jones
Kim L. Hunter & Paulo P. Lima, Ph.D.
Tim Clarke & Art Luna
Carole MacElhenny
Suzanne & Gilbert Mathews
Mimi Michaelis
Julie & Peter Morley
Marcie & Robert Musser
Katherine Kims & Eric Ng
Kevin O'Brien
Alexandra & Jeffrey Pfeifer
Lady Leslie Ridley-Tree**
Gary Uwé & Della V. Rollé
Patty Elias & Michael Rosenfeld
Jay & Talia Roston
Jeffrey Romano & Stan Shayer
Judy Shea
Anitra Sheen, Peebles-Sheen Charitable Foundation
Meera & Ramamurthy Suresh
Christopher J. Toomey
Nita & Henk van der Werff
Cheryl Burke & Alan Weiss
Beth DeWoody & Firooz Zahedi

*Guardian Circle memberships start at \$5,000

**Deceased

LOTUSLAND CELEBRATES: BIRDSONG

A Wild and Soaring Success

ON SATURDAY, JULY 23, almost 500 supporters gathered for *Lotusland Celebrates: Birdsong*, Lotusland's largest annual fundraising event providing vital support to the Garden's operations, celebrating its world-renowned botanical collections, and supporting its conservation and horticulture programs.

It was an extremely successful summer soiree! **Presenting Sponsor Rosewood Miramar Beach**, along with a generous number of sponsors and donors, contributed and raised more than \$700,000 — the highest net income in the history of *Lotusland Celebrates!*

This year's event also raised awareness of the importance of gardens as bird habitats, inspired by Honorary Co-Chair, Randall Poster's *For The Birds: The Birdsong Project*. Across California and around the world, fire, drought, overdevelopment, and other destructive forces have ravaged bird populations, with some habitats losing more than 40 percent of their species. *Lotusland Celebrates: Birdsong* served as a call to action, drawing attention to the threats facing bird populations and Lotusland's role as a natural sanctuary for the birds that fill our gardens with song and call Lotusland home.

Guests arrived in gorgeous garden wear and were greeted with gifts of *Birdoculars* for bird watching, donated by eyeglass retailer Warby Parker. A walk through Lotusland's gardens included contemporary art, music, dance, and a unique installation of custom architectural birdhouses. This temporary exhibition featured notable architects who were invited to fabricate creative bird dwellings that were then auctioned for the benefit of Lotusland.

Following their garden migration, guests gathered on the Great Lawn for dinner by Seasons Catering, a performance by indie folk artists Devandra Banhart and Gregory Rogrove, an exciting live auction, and a paddle raise to fund Lotusland's educational programs.

The capstone of the evening was a live performance in the Japanese Garden Reflecting Pond with a solo by Simone Porter on the violin and projections of dynamic digital art on her gown by Chris Doyle. Doyle presented a composition, "SHOREBIRDS," with a unique score created for the event by composer Jeremy Turner, performed by Porter, an extraordinary violinist.

The online auction of over 50 amazing collectibles, artwork, and experiences didn't close until Sunday afternoon, drawing more support from bidders near and far. To our Chairs, Honorary Chairs, Creative Consultants, and Event Committee, who worked for many months to execute a meaningful and engaging event, we thank you.

A special thank you to our participating architecture firms:

AM SINGER Design, DNA Architecture + Design, Inc., Good Project Co., Harrison Design, Nwankpa Design, Shubin Donaldson, Studio William Hefner, and Tichenor & Thorp Architects, Inc.



Ian Somerhalder bird watching with Warby Parker birdoculars



Trustee Stephen Schaible and Daron Buita with Cedar Baldrige and Kate Hersch



Laura and Mark Bacon



Honorary Co-Chair Belle Hahn and Creative Consultant Mary Ta



Charmaine and Sean Bailey with Jackie and Jeff Schaffer



Thomasine Richards, Executive Director
Rebecca Anderson, Honorary Co-Chair Belle
Hahn, and Lily Hahn



Max, the most charming Great Horned Owl,
was on hand to represent the Santa Barbara
Audubon Society



Trustee Ron Caird, Pat Caird, Trustee Mimi
Michaelis, and Trustee Dan Bifano



Chris Brown, Lynn Cunningham Brown, and
Kim Hunter



Ian Somerhalder, Nikki Reed, Jennifer Smith,
Kendall Conrad, Dang and Evan Lysacek



Captivating Shorebirds performance by Chris
Doyle Studio, composer Jeremy Turner and
violinist Simone Porter



Ashley and Scott Adelson with Rusty
Gregory and Doreen Leeds



Trustee Rachael Douglas with Pam and
Greg Breedlove



Past Trustee Marc Appleton and Peggy Plattner



Kandy, Aaron, and Mindy Budgor



Presenting Sponsors, Rosewood Miramar Beach



David Jones and Joseph Marek, Event Co-Chairs and Trustees



Michael Rosenfeld and Patty Elias with Maggie and Austin Herlihy



Susan Shanaberger and Carole Ridding with Jewelry Sponsor, Silverhorn

WE GRATEFULLY ACKNOWLEDGE THE LOTUSLAND CELEBRATES: BIRDSONG

Supporters

PRESENTING SPONSOR
ROSEWOOD Miramar Beach

CALIFORNIA CONDOR
Nora McNeely Hurley &
Michael Hurley

GREAT BLUE HERON
The Guerin Foundation
Lucifer Lighting and
Michael MacElhenny
& David Wine
Connie & John Percy
Jackie & Jeff Schaffer

**NORTHERN
MOCKINGBIRD**
Pat & Ron Caird
Lesley Cunningham
& Cyndee Howard
John & Dorothy Gardner
and Alexandra
& Charles Morse
Nicole & Evan H. Katz
Mary Ta & Lars Oliver Hypko
Lynda Weinman
& Bruce Heavin

**EMPRESS BRILLIANT
HUMMINGBIRD**
Belle Hahn and Lily Hahn

YELLOW WARBLER
EPRES
Stephen P. Schaible
& Daron Builta
Christopher J. Toomey

AMERICAN GOLDFINCH
Ashley and Scott Adelson
Cabana Home
Patty Elias & Michael
Rosenfeld and Tichenor
& Thorp Architects, Inc.
Sintija Kemezys Felder
Janice Feldman & Mitchell
Grossman
Judy B. & David M. Jones
Marsha Kotlyar
Joseph Marek & John Bernatz
Carole MacElhenny
Mari & Hank Mitchel
Montecito Bank & Trust
Ron & Stacy Pulice
Eileen & Alex Rasmussen
The Tweten Foundation

ANNA'S HUMMINGBIRD

Mary Lou Ardohain
Mark & Laura Bacon
Marianne Battistone
& Philip W. Norwood
Maureen & Edward Bousa
Laura & John Bridley
Chris Brown & Lynn
Cunningham Brown
Christine Bruce
& John Hilliard
Teresa & Chris Bruzzo
Cheryl Burke & Alan Weiss
Nigel & Connie Buxton
Tim Clarke & Art Luna
Rebecca & Ron DeSantis
Rachael Douglas
Diane Evans & Tom Farr
Josie & Brian Freckmann
Sheri Fults
Gregg & Susan Goggin
Andy & Jan Goldman
Julie & Maury Hayashida
Maison K
Andrea & Ron Hein
Kim L. Hunter
& Paulo P. Lima, Ph.D.
Tamara Kaye-Honey
& Traci Fleming
Karen Lantz
Julie & Peter Morley
Debby & Danny Needham
Susan & Jim Neuman
Kristan O'Donnell
Mitchell Opalski
Susan Read
& Edward W. Cronin
Jeffrey Romano
& Stan Shayer
Sally & Bill Russ
Jill Taylor & Ray Link
Cheryl & Benjamin Trosky
Crystal & Clifford Wyatt

EVENT UNDERWRITERS
Abacus Life: *Wine Sponsor*
Daniel Bifano & Allan
Brostrom: *Event
Program Sponsor*
The Well Summerland: *Valet
Sponsor*
Lesley Cunningham
& Cyndee Howard:
Cocktail Napkins
Sintija Kemezys Felder:
*Contemporary Art
Installation*
Joseph Marek & John
Bernatz, Stephen P.
Schaible & Daron Builta,
The Garden Conservancy:
Sunset Farewell
Lucifer Lighting: *Photo Booth*
Mimi Michaelis: *Linens, Ice,
Champagne*

Kevin O'Brien: *Specialty
Mocktail*
Rosewood Miramar Beach:
Patron Party
Jeffrey Romano & Stan
Shayer: *Swag Bags*
Harrison Design: *Event
Invitation*

AUCTION DONORS

Anonymous
Jeanne M.
& Robert S. Anderson
Apricot Lane Farms
Bellosguardo Foundation
Belmond Casa de Sierra
Nevada
Daniel Bifano & Allan
Brostrom
Blumera
Cornell Lab of Ornithology
Colette Cosentino
DNA Architecture + Design,
Inc.
Gene & Deanna Dongieux
Danielle Elese
Firework Foundation
Four Seasons Resort, Lanai
Daniel Geiger
Good Project Co.
Harrison Design
Cynthia James
Jet It Inc.
Kovac Design Studio
Susan Levine
Maya Mallick
Joseph Marek & John Bernatz
Margerum Wines
Mimi Michaelis
Mandana Mir
Nwankpa Design
Setenay & David Osman
Palma Wellness
Connie & John Percy
Portico Fine Art Gallery
Susan Read Cronin
Lisa Romerein
Rosewood Miramar Beach
Dina Saalisi
Santa Barbara
Audubon Society
Santa Barbara Symphony
ShubinDonaldson
Silverhorn
Anne-Marie Singer
Kerrie Smith
Stoked Surfboards
Studio William Hefner
Katie Teall
Tichenor & Thorp
Architects, Inc.
University Club Santa
Barbara
Alison Van Pelt
Susan Venable

AUCTION WINNERS

Ashley & Scott Adelson
Marianne Battistone
& Philip W. Norwood
Michael & Tracy Bollag
Debra Cochran
Carrie Cooper & Glenn
Griffith
Kathiann & Ken Crews
Lesley Cunningham
& Cyndee Howard
Kelly Day & Laurie Gilmore
Kate & Michael Faust
Alexandra Geremia
Stuart & Marilyn Gillard
Andy & Jan Goldman
Suzette Gordon
& Claudia Miklis
Fabienne Guerin
Belle Hahn
Lily Hahn
Kate Hersch
Michael Hurley
& Nora McNeely Hurley
Luci Janssen
Judy B. & David M. Jones
Leslie Krinsk & Steve
Schneider
Lucifer Lighting
Joseph Marek & John Bernatz
Daniel Martin
& Xavier Ituarte
Whitney McDowell
Dahlia Mehri
Katherine Meier
Julie & Peter Morley
Connie & John Pearcy
Jennifer Perry & Andy Spahn
Patti Sanderson
Aggie Skirball
Elena Urschel
& Catherine Pilgrim
Crystal & Clifford Wyatt

IN-KIND DONORS

Bella Vista Designs
Cabana Home
Carbon2Cobalt
COSBAR
Lori Menna, Cosmic Collage
Colette Cosentino
Hallstein Artesian Water
Minotti Los Angeles
Moonjuice
Montecito Country Mart
Natalie's Cosmetics
Poppy Stores
Santa Barbara Magazine
The Well Summerland
TW Hollister
Warby Parker
Yola Mescal

ADDITIONAL SUPPORT FROM

Wynne Ahern
Sue Barham
Joan Bernatz
Beth DeWoody
& Firooz Zahedi
Andrea & Mark Gabbay
Dr. Steven & Penny Gundry
Kathrine & James Lingle
Joseph Marek & John Bernatz
Julie and Peter Morley
Mitchell Opalski
Susan Read
& Edward W. Cronin
Sally & Bill Russ
Judy Shea
Nita & Henk van der Werff
Nancy & Tony Wall
Laura-Lee Whittier Woods

DONORS TO LOTUSLAND EDUCATION PROGRAMS

Greg & Pam Breedlove
Karen & Aaron Budgor
Pat & Ron Caird
Louise & Tim Casey
Lesley Cunningham &
Cyndee Howard
Maureen Decker
Gene & Deanna Dongieux
Jeri & John Heiden
Debbie & Duke Howard
Kim L. Hunter
& Paulo P. Lima, Ph.D.
Judy B. & David M. Jones
Carrie LaLonde
Kevin O'Brien
Mitchell Opalski
Connie & John Pearcy
Stephen & Blair Raber
Jim Semick
Elena Urschel
& Catherine Pilgrim

LOTUSLAND CELEBRATES

Event Committee

EVENT CO-CHAIRS:

David M. Jones
Joseph Marek

HONORARY CO-CHAIRS

Belle Hahn
Randall Poster

EVENT COMMITTEE

Ashley Adelson
Mary Lou Ardohain
Lynn Cunningham Brown
Krista Blake
Jennie Grube
Julie Hayashida
Ashley Woods Hollister
Kim Hunter
Kate Faust
Paulo Lima
Analise Maggio
Marni Margerum
Suzanne Mathews
Mimi Michaelis
Alex Morse
Kristan O'Donnell
Setenay Osman
Connie Flowers Pearcy
Sophia Penske
Heather Rosenfield
Jackie Schaffer
Nati Smith
Jill Taylor
Kim Thomas
Caroline Thompson
Cindi Weinert
Yasmine Zodeh

CREATIVE CONSULTANTS

Merryl Brown
Mary Ta



Blumera Trunk Show

On Wednesday, July 20, Cabana Home hosted a very special trunk show as a benefit for Lotusland, featuring creations by Mehera Blum, founder and designer of Blumera (www.Blumera.com). **We are continuing with a virtual Blumera trunk show through 2022, with 20% of proceeds from new sales going to support the Garden's care (please reference Lotusland when purchasing).** Blumera creations include luxuriously exquisite handbags, vases, and fixtures utilizing unexpected natural sustainable materials such as recycled brass and upcycled wood.

"Each Blumera piece is a collectable work of art! We were honored to host Mehera Blum and her 'Convention of the Birds' pieces in concert with Lotusland Celebrates: Birdsong." — Caroline Thompson, Trustee, Owner, Cabana Home

ENDOWMENT GIVING

Fall is a Good Time for Self Care and Planning Ahead for Peace of Mind

THE FALL SEASON is the perfect time for self-care, plant care, and establishing a legacy for future giving to your favorite charity such as Lotusland. It is an opportunity to consider updating your estate plan to secure your future intentions, protect your loved ones, and build a lasting legacy. We recommend contacting your financial advisor, donor-advised fund liaison, CPA, or estate planner who can provide tax-saving ideas. Making a gift brings peace of mind and also has major tax advantages.

A gift to Lotusland signifies your commitment to join others in conserving the garden and sharing Madame Walska's passionate vision that fosters love for the natural world among school children, families, plant societies, the community, and beyond. Joining the Lotus Society also assures funding for the Lotusland Endowment to sustain the garden for future generations. We are readily available to talk with you at your convenience about the many ways to give to the garden.

We welcome the opportunity to answer questions regarding your plans!

Contact us or visit Planned Giving at www.lotusland.org.

Catherine Kort,
Campaign and Legacy Gifts Officer

Tel: 805.969.3767 x106

Email: ckort@lotusland.org

LOTUS SOCIETY MEMBER SPOTLIGHT

Jill Taylor

"AS A VOLUNTEER DOCENT, it's a privilege and a joy sharing this extraordinary garden with visitors. Unlike larger, well-funded nonprofits, I see firsthand how my contributions make a real difference at Lotusland. I'm happy to support Lotusland as a member of the



Garden Lovers Circle, attend their fun events, and am committed to building their endowment as part of the Lotus Society to ensure the garden continues to flourish and delight others long after I'm gone."

Jill Taylor is a Lotus Society Member, Garden Lover Circle Member and Docent.

STAY CONNECTED

Membership

END OF SEASON CLOSURE

Lotusland will close for regular public tours on November 15 and re-open for the 2023 Season on February 15, 2023. Spring 2023 reservations will be available to Members for priority access in early January. Restrictions that come with the County's conditional use permit strictly limits the Garden's operations and activities allowed, including the number of annual visitors and vehicles.

FALL AND WINTER IN THE GARDEN

Look for opportunities to visit the Garden and discover the seasonal treasures only on view during the colder months, when Lotusland is closed for public tours.

HOLIDAY SHOPPING

The Garden may be closed for the season, but our online Garden Shop is always open at www.LotuslandShop.org. Members can enjoy their 10% discount by using code MEMBERSSAVE10.

WISH LIST

Advance Lotusland's Mission



Preserving the Legacy of Madame Ganna Walska: A Woman Ahead of Her Time

Lotusland is making strides to safeguard our vulnerable archives from deterioration. Ganna Walska was passionate about more than horticulture. Her costume, jewelry and art collections and 200 scrapbooks were created more than 50 years ago and reveal the amazing stories behind the renowned gardens. We see in these files, photos, correspondence and collections her vision for the Garden as it evolved. Help to preserve and digitize these fragile paper artifacts and non-living collections before they deteriorate. Lotusland has invested in staff to advance our archival preservation and now needs equipment to do so.

Wishes DO come true! With a \$12,000 challenge grant from Trustee Mimi Michaelis following the Spring Newsletter wishlist, Lotusland can begin the important work to digitize the archival collections and to catalog in a digital database the manuscripts, photographic materials, and memorabilia of the Garden's unique history. Make a gift to unlock the gift of a digitizer and enable the purchase of the related camera equipment and collections management software to conserve the beautiful history of Madame Ganna Walska and her vibrant life and legacy. **\$12,000 unlocks \$12,000!**

We are gratefully accepting donations of any size to support these projects.

Composting Made Simple

Lotusland promotes green waste recycling and composting, natural treatment of soil-borne diseases, application of compost tea as a fungal preventative, soil improvements promoting good drainage to encourage root health, use of cover crops, and weed management and nutrient cycling for soil fertility through mulching.

As leaders in plant conservation, these techniques to ensure healthy soils are essential our garden's success. Fortunately, much of the waste from the garden can be broken down and reused as mulch to support our rich and microbially diverse soil systems. We currently do this work by hand, making it an extremely time-consuming process. A new piece of powered garden equipment will be able to accelerate the process dramatically redirecting valuable staff time and energy. **Flail Mower \$12,000 and Screen \$22,500**



Support the Green Team! Refurbish the Green Cottage for Garden Staff

Lotusland's hardworking gardeners are the reason the Garden is artful, vital and pristine. Let's show them love by improving their meeting and rest areas. This gift will purchase an oven, ice machine, and new furniture. Buy one or the whole lot! **\$6,000**

- Outdoor picnic tables (2) - \$1,800
- Furniture - \$2,200
- Oven - \$1,000
- Ice machine - \$1,000

Please call 805.969.3767 ext. 125 to make a gift, or give online and list the Wish List item you would like to support. Gifts are 100% tax-deductible.

Sunday, October 23 • 10:30am–3:30pm

A Day of Wellness at Lotusland Curated by Palma Colectiva

THE FIVE HOUR HEALING RETREAT includes a choice of Tea Meditation in the Japanese Garden with Kat Mills, or Kundalini in the Theater Garden with Siddhi's Yoga, followed by a farm to table lunch from chef Natacha Stojanovic, a special guest speaker, and a breathwork and a reiki circle with Lara Elliot.

Visit www.lotusland.org to learn more
Members: \$700 Non-Members: \$800



Saturday, October 29

10:30am – 12:45pm (ALL AGES)

MONSTERA MASH: A Boo-tanical Stroll Through Lotusland

GATHER IN THE GARDEN for a boo-tanical stroll and experience the thrills and chills of the season. Follow the Monstera Mash map through the gardens to find spooktacular decorations, learn about poisonous plants and creepy creatures, and discover mysterious surprises around every corner.

Costumes are encouraged for all ages. Space is limited and advance reservations with staggered arrivals are required. Visit www.lotusland.org or call 805.969.9990 for reservations.

Members: Adults \$40, Children \$20 (age 3-17)
Non-Members: Adults \$75, Children \$35 (age 3-17)
(Children age 2 and under are free)



Saturday, October 29

3:00–6:00pm Adults Only (21 and older)

Spirits Of Lotusland: Halloween Soirée

EXPERIENCE THE MAGIC and mystery of the garden at Spirits of Lotusland: A Halloween Soirée. Enjoy twilight mingling, dressed in your Halloween best with Spirited Cocktails, Witches Brews, and Wicked Wines.

The Bromeliad and Theatre Gardens transform into a spooky speakeasy with tunes by Professor Watson of Swingtronic. Tarot card and palm readings by Madame Rosinka will be in Madame Ganna Walska's haunted bedroom.

Costumes are encouraged. Space is limited and advance reservations with staggered arrivals are required. Visit www.lotusland.org or call 805.969.9990 for reservations.

Members: \$120
Non-Members: \$150





Wednesday, November 16 • 5:30 - 6:30pm
LESSONS FROM LOTUSLAND: Saving the Cycads
An Online Event

Presented by Paul Mills, Director of Conservation and Curator of the Living Collections

JOIN US FOR LESSONS FROM LOTUSLAND, our ongoing series of virtual lectures. Get an inside glimpse into the Garden, the collections, its operations, and its creators. Be sure to have your questions ready for the Q&A.

Cycads are the most threatened group of plants on the planet, but what happens when they are threatened in the garden where they are being safeguarded? Join us to learn about Lotusland's cycad collection and how Lotusland staff recently remedied a large infection of the naturally occurring fungus, *Armillaria mellea*. Register at www.lotusland.org

November 18 and November 19
Educator Appreciation Days

WE VALUE THE EDUCATORS in our community! To show our appreciation for the devotion you've shown to local school children and families, we invite Santa Barbara County educators, para-educators, and school administrators for a free visit to the Garden!

These self-guided tours last one and a half hours and visit times are staggered. Space is limited and advance reservations are required. Register using an email address affiliated with an



accredited educational institution in Santa Barbara County. One admission per email address.

Parking is limited and carpooling is appreciated! Learn more or reserve your space at www.lotusland.org

Saturday, November 26
Members' Holiday Shopping and Garden Walk

ENJOY THE GARDEN in the glory of autumn on this holiday weekend. After exploring the Gardens, shop for exclusive Lotusland gifts and treasures in the Garden Shop.

Space is limited and advance reservations are required. Regular admission rates or member guest passes apply. Visit www.lotusland.org or call 805.969.9990 for reservations.

Saturday, December 3
Hospice Appreciation Day in Memory of Robert Blaha

LOTUSLAND IS PLEASED to offer a special day in the Garden for hospice workers through our Open Pathways program for a restorative and inspiring visit. These admissions are sponsored in memory of Lotusland's long-tenured Maintenance Supervisor Robert Blaha, who retired in 2018. Robert provided selfless and loving care to Lotusland's infrastructure for 17 years. He loved Lotusland, and he continued to volunteer in his retirement. We remember him with great affection and are honored to host the workers who help nurture Robert's end-of-life journey. For information please contact Courtney Tentler at ctentler@lotusland.org or 805.324.8416



WELCOME New Staff



BETHANY PACE
Database Coordinator

Bethany Pace joined Lotusland's staff in March 2022 as the team's Database Coordinator. Her background in bookkeeping and financial reporting set her up for success in overseeing the reporting

and software management here at Lotusland. After graduating from Westmont College with a degree in Communication Studies, she discovered systems management and an interest in data. This fascination paired with her love of gardens led her straight to Lotusland. She enjoys all the outdoor activities Santa Barbara has to offer and in her free time in the Garden you can find her at the Rooster Grotto in the Bromeliad Garden!



RYAN GRACEY
Gardener

Ryan Gracey joined the Lotusland team as a Gardener in May. His responsibilities include caring for the Dunlap Cactus Garden, Main Drive Cactus, Blue Garden, and the Succulent Garden. His first trip

to Lotusland was with a class from Santa Barbara City College where he studied Environmental Horticulture. Ryan received his AA in Liberal Studies at SBCC and transferred to San Francisco State University where he obtained his BA in Radio and Television Production. After graduation, he worked with Home and Garden Television on a show called *Curb Appeal*. Ryan has experience as a greenhouse manager and technician, landscaper, and retail nursery manager. He has a passion for plants, organics, learning, and teaching. In June Ryan started taking classes at Oregon State University, where he is working toward his BS in Horticulture.



ADAM FLINT
Director of Operations

Adam Flint joined Lotusland in June as the Garden's first Director of Operations. Adam was born and raised in Southern Idaho and has a background in public horticulture and operations management. He gained

exposure to plants early in life with a family-owned greenhouse producing potted plants for garden centers, flower shops, and grocery stores. Adam has worked in many capacities throughout his horticultural career including Grower, Production Manager, and most recently General Manager. Outside of work Adam enjoys camping, going to the beach, and tending plants in his garden.



NATALIE SANDERSON
Archives Preservation Manager

Natalie Sanderson is an art historian, with her Doctor of Philosophy and Master of Studies from the University of Oxford and her Bachelor of Arts degree in Art History from the University of California

Los Angeles. She has taught American art history and museum studies at UC Santa Barbara and visual literacy at Santa Barbara City College.

Before joining Lotusland, Natalie worked at the Santa Barbara Museum of Art as the Digitization Specialist and at UC Santa Barbara's Art Design and Architecture Museum as the Curator of Education and Acting Curator, where she curated and managed major exhibitions, collaborated on interdisciplinary public programming, and established and taught the undergraduate docent training program. At Lotusland, Natalie is advancing the preservation of the archival collections.



CATHERINE DUSHARME
Executive Assistant & Board Liaison

Catherine Dusharme is a talented administrative executive with over 25 years of experience supporting business owners and executives. Born and raised in San Diego, she moved to Santa Barbara in

2018. After completing her degree at UCSB, she joined Lotusland in March. Catherine has studied and lived abroad in Spain and Costa Rica, and brings her love of history, discovery and the outdoors to the Garden. She has worked in Seattle, Washington and spent 15 years living in the Pacific Northwest. As a lifelong volunteer at various national and international environmental nonprofits, she combines her passion for sustainability and the preservation of nature with her business and service skills to make the world (and Lotusland!) a better place. Catherine enjoys traveling, hiking, water sports, live music, the beach and anything related to food.

Garden Interns



DANA HALVERSON

Following a career as a research scientist, and as the mother of twins and public school volunteer, I studied horticulture and design at Santa Barbara City College. While an SBCC student, I volunteered weekly in Lotusland's orchard and insectary gardens, where I gained hands-on experience with Lotusland's sustainability program. I later applied for and was accepted into Lotusland's SBCC internship program.

This program allowed me the opportunity to formally rotate through all of Lotusland's gardens and learn hands-on about curation, plant mapping, and ecology-centered care and maintenance of the wide diversity of plant species that make up Lotusland's amazing living collection.

Not only has my internship increased my knowledge and skills, but I have also been able to pay it forward. As an SBCC adjunct faculty member teaching landscape drafting, as well as a freelance garden designer, I am able to share the knowledge that I have gained at Lotusland, as well as my passion for the garden, with my students and clients.

My time at Lotusland has been an absolute privilege, and I am so grateful to the incredible staff for the vital role that they have played in my horticultural education. Lotusland is not only a beautiful garden, but it is also a living classroom for the next generation of sustainability-minded gardeners, landscape designers, educators, and horticulturists who work to make our community and world a better place.



ANN MACKAY

Thank you to everyone at Lotusland, I had so much fun being a part of this community as the Sustainable Plant Health Care Intern. As a student of horticulture at Oregon State University, what began as wanting to see how a botanical garden approaches organic practices on a large scale, evolved into so much more. I was able to see the web of connectedness between people and plants and how different

systems at Lotusland cycle biomass products, return them back to the gardens, and support strong and healthy plants. The knowledge I gained during this experience will definitely carry into my future in public horticulture.

Under the tutelage of Corey Welles, Manager of Sustainability, I learned about intelligent gardening, a methodology that underlies the functional application for sustainability at Lotusland. I was honored to get to work with different gardeners — all experts in the living collections they tend — who generously shared their knowledge. I was also in awe of how Rebecca Anderson has created such a nurturing work environment. This experience has been a one-of-a-kind opportunity. I would like to thank Mr. Arthur Gaudi and the John Percival and Mary C. Jefferson Endowment Fund for the generous gift of this experience.



JOIN LOTUSLAND New Volunteer Opportunities

HUNDREDS OF VOLUNTEERS share their time and talents with Lotusland throughout the year, leading tours of the garden, staffing the Garden Shop, maintaining the grounds, and assisting with special events and office tasks.

Garden attendants are needed to welcome and support self-guiding visitors and help them to feel welcome and safe during their visit. There are opportunities for remote learning and varying levels of commitment exist.

Docents graduate from a comprehensive training program and lead tours and help to educate visitors and provide rich history and interpretation of the estate, its creators, and the collections.

Volunteering at Lotusland offers a meaningful and rewarding experience with a community of like-minded people. No prior knowledge is needed, only a willingness to learn and participate.

Please contact Kitty Thomassin, Volunteer Manager at kthomassin@lotusland.org for information and training dates and details in 2023.

LOTUSLAND GRATEFULLY ACKNOWLEDGES DONORS

April, May, June, July and August 2022

THE LOTUS SOCIETY NEW LOTUS SOCIETY MEMBERS

Sheri Fults

SAVE THE CYCADS

Robert & Alisa Baur
Jacqueline Mars
Lori Kraft Meschler
Adele & Loi Nguyen
Rick & Sheila Vitelle

CYCAD RESTORATION ARMILLARIA ABATEMENT

Maryann Kruse
Cheryl Miller

JAPANESE GARDEN RENOVATION

Bernadine & Herb Aldwinckle
Jay & James Fortman

GRANTS AND SPECIAL PROJECTS

SUNKEN DRAWING ROOM AUDIO/ VISUAL SYSTEM

Suzanne & Gilbert Mathews, Lucifer Lighting

LIGHTING AND DIGITIZER FOR ARCHIVAL PRESERVATION

Mimi Michaelis

CURATION DEPARTMENT PROFESSIONAL DEVELOPMENT FUND

Melinda Burns & Catherine Rose

EDUCATION & OUTREACH PROGRAMS

Manitou Fund
John C. Mithun Foundation

LOTUSLAND COFFEE TABLE BOOK RELEASE EVENT

SPONSOR TABLE HOST

The Tweten Foundation

TABLE HOSTS

Joseph Marek & John Bernatz
Cabana Home
Kari Eiler
Marilyn & Steve Gutsche
Randie Judkins
Steve & Annmarie Plenge
Lisa & David Wolf

PATRON

Deidre & Will Arntz
Lynn Cunningham Brown & Chris Brown
Ann Cooluris
Geoff & Kim Crane
Julie & Roger Davis
Palmer & Joan Jackson
Travis & Tom Kranz
Harriet Mosson
Holly & Robert Murphy
Susan & Jim Neuman
Michael Loftis & Erik Nickel
Natalie & Eric Pressly
Alex & Eileen Rasmussen
Koni Rich
Patricia Ryan
Michele & Toby Saltoun
Nancy Schlosser
Sheila M. Stone
Carol Sacks & Matt Stotts
Daniel Geiger & Christine Thacker
Nohl Martin & Stephen Vella
Leslie Von Wiesenberger
Linda Woodcock

ADDITIONAL SUPPORT FROM

Montecito Bank & Trust

YOUR PHILANTHROPY MATTERS. THANK YOU TO OUR DONORS.

Anonymous
Will & Deirdre Arntz
Tom Barton
Julie Bloomer
in recognition of Anna Bower

Janet Caroline Brown
Brian & Karen Conway
Susan Read & Edward W. Cronin
John Dyer
Helena Eversole
Liz Fracchia
Coleen Richardson & Ted Friedel
Ashley Gable

in recognition of Joseph Marek
Dorothy & John Gardner
Patricia Gartland
Arthur R. Gaudi
Nina Quiros Hardie
Sara Hetynok, Ontraport
Robert & Peggy Hiss
Clinton Kyle & Ashley Hollister
in recognition of Belle Hahn

Victoria Jelensky
Judy B. & David M. Jones
Carol & Tara Kaiser
Evan & Nicole Katz
Suzanne & Richard Kayne
Bruce Klores
Molly Jordan Koch
in recognition of Anna Bower
Lehrer Family Charitable Fund
Daniel Leonard
Ed Glassgold & Joanne Lynn
Manitou Fund
Margaret Marshall
Chauncey & Marion D. McCormick Family
Foundation
Lorraine M. McDonnell
Nancy & Bernard Melekian
Derek Meyer
David Symons & Claudia Miller
Christina Morrison

in recognition of Sandy De Rousse

Mosher Foundation,
directed by Edward Birch
Kyle Murray
Carol & Steve Newman
Katherine Kims & Eric Ng
Michael Loftis & Erik Nickel
James C. & Dede Nonn
Anne-Sabine Nooteboom
Arlene & Alfred Noreen
Mitchell Opalski
John Osterhaus
Daniel N. & Anne B. Ovadia
Ronald & Shannan Penna
Ann N. Lowry & John A. Perez
Robert Permut
Jenna Jobst Reichental
Lady Leslie Ridley-Tree**
Melissa Riparetti-Stepien
Nanci Robertson
Susan & Robert Root
Sally & Bill Russ
Wendy & Eric Schmidt
Len & Diana Simoni
Terin Smith

in honor of Deanne Violich
Beverly & Michael Steinfeld
Rachel Steinhart
Janice Thacher
Michael Theobald

Sam & Sandra Tyler
Kathleen Utecht
Hildegard & Richard Way
in honor of Sandi Wilson
Amy Weber
in recognition of Aira Harris
Carl Weissman
Claire Werner
Jane Westerman
Elisa Wolfe

IN-KIND DONATIONS

Babcock Winery
Lesley Cunningham & Cyndee Howard
Jerry Jacobs & Angela Perko
Alexandra and Charles Morse
in honor of Paul Mills

**All the donations acknowledged above are gifts
of \$100 or more*

*** Deceased*



Support Botanic Gardens in Ukraine

LOTUSLAND IS A PROUD CONTRIBUTOR to the **Ukraine Botanic Garden Appeal**, working to support botanical gardens impacted by disaster. Together with the generosity of many public gardens and partners from North American Gardens, we have raised more than \$50,000.

Botanic garden staff across the world are risking their health and safety to ensure that **we do not lose the planet's incredible plant diversity** — more than one third of which is held in botanic garden collections. For more information on the susceptibility of botanic gardens and their responses to disasters, please see Botanic Gardens Conservation International's (BGCI) technical review at www.bgci.org.

By establishing the **Disaster Recovery Fund** and launching the **2022 Ukraine Botanic Garden Appeal**, BGCI is working to support the botanic gardens impacted by disaster, focusing at this point in time on supporting the Ukrainian community of botanic gardens.

For those who wish to make tax-deductible donations in the United States, please send checks to 'BGCI-US' at: 1151 Oxford Road, Botanical Division, San Marino, CA 91108.

Recipient Gardens include:

Ivan Franko National University of Lviv Botanical Garden
M.M.Gryshko National Botanical Garden of National Academy of Science of Ukraine
V. N. Karazin Kharkiv National University Botanical Garden
Kryvyi Rih Botanical Garden of National Academy of Sciences of Ukraine
Taras Shevchenko National University of Kyiv O.Fomin Botanical Garden
Odesa I.I.Mechnikov National University Botanical Garden
Oles Honchar Dnipro National University Botanical Garden
Yuriy Fedkovych Chernivtsi National University Botanical Garden
Uzhhorod National University Botanical Garden
Zaporizhia Municipal Botanical Garden

GARDEN SHOP

Give the Gift of Lotusland this Holiday

Shop and online at lotuslandshop.org.
Members save 10% on all purchases.

LOTUSLAND Eccentric Garden Paradise is the perfect gift for the gardener in your life — offering inspiration for your friends and loved ones.

We are thrilled to present our **2023 calendar**, inspired by the beautifully crafted *LOTUSLAND: Eccentric Garden Paradise* book from Rizzoli. Enjoy a wide variety of garden photos by the celebrated photographer, Lisa Romerein. This stunning calendar makes a great gift or keepsake for yourself and is available at our Garden Shop or online.





GIFTS FOR THE GARDEN

Give the Gift of Nature

SUSTAINING THE BEAUTY of the Garden is a perfect holiday gift. This is a special way to make a difference while paying tribute to a friend or loved one or marking a special occasion. When you make a tribute gift, we notify the recipient of your thoughtful support in their honor.

Your support of *Gifts for the Garden* accelerates global plant protection and conservation efforts and advances our sustainable plant healthcare program.

DID YOU KNOW?

Congress has renewed the opportunity for individuals to give through Individual Retirement Accounts (IRAs).

- There's no shortage of ways to give to the Garden, but donating individual retirement account funds may offer a special tax break.
- If you're age 70 ½ or older, you may use qualified charitable distributions to donate.
- When transferred at age 72 or older, it may satisfy required minimum distributions and accomplish other tax goals.

For those over age 70 ½, it is once again possible to make tax-favored charitable gifts from traditional and Roth IRA accounts. Your charitable gift — up to a total of \$100,000 — will count toward required IRA withdrawal amounts. If you decide to distribute a charitable gift from your IRA, ensure that your IRA's custodian transfers it directly from the IRA to Ganna Walks Lotusland. It is important not to withdraw funds prior to a gift and to consult your professional advisor for details.

Please visit www.lotusland.org to make a gift today, or contact Patricia Sadeghian, Director of Development at 805.969.3767 ext. 125. Ganna Walska Lotusland is a 501 (c)(3) charitable organization whose tax ID number is 23-7082550.

Together we protect and grow this very special natural treasure.

EXCEPTIONAL PLANTS

Lotusland's Rare Plant Auction

ON OCTOBER 8, plant aficionados, collectors, and gardeners (both serious and amateur) gathered on the Great Lawn for the "Ultimate Plant Party." Guests enjoyed



delicious food, specialty cocktails, and the opportunity to bid on rare and unique plants — all while supporting Lotusland's botanical collections.

Over 200 specimens were available for purchase at the impressive silent

auction. A spirited live auction hosted by Jeff Chemnick, Lotusland's Research Associate and Event Committee Chair, raised funds and made friends.

Lotusland is incredibly grateful to its generous sponsors*, plant specimen donors, and devoted Event Committee.

COMMITTEE

Jeff Chemnick, Committee Chair, *Aloes in Wonderland*
 Randy Baldwin, *San Marcos Growers*
 Robert Bett, *PlantHaven International*
 Mike Tully, *Terra Sol Garden Center*
 Cristi Walden, *Sea Crest Nursery*

We are grateful for the generosity of our Exceptional Plants 2022 Sponsors*

COLLECTOR

Anonymous
 Maureen and Edward Bousa
 Lampson Team at Homeowners Financial Group
 Connie and John Pearcy

CONNOISSEUR

Jeanne and Robert Anderson
 Aqua-Flo Supply
 Arroyo Seco Construction
 Guillermo Nicolas and James Foster
 Elizabeth and Tom Patterson

GROWER

Arcadia Studio, Landscape Architecture
 Daniel Bifano and Allan Brostrom
 Lesley Cunningham and Cyndee Howard
 Lynn Cunningham Brown and Chris Brown
 Rachael Douglas, Douglas & Associates
 Patricia and Larry Durham
 Sintija Felder
 Joseph Marek Landscape Architecture
 Susanne and Gary Tobey

ADDITIONAL SUPPORT PROVIDED BY

Clendenen Family Vineyard Wines

*Sponsorship commitments as of October 3, 2022

COMMUNITY EDUCATION

Kokedama Workshop



Assistant Curator Anna Bower leads a Kokedama workshop and webinar.

THIS PAST JUNE, Lotusland offered an educational webinar for Pernod Ricard's Responsib'All Day, a dedicated day for their staff to learn, share, and make a difference in their communities. This year the theme was protection and restoration of nature and biodiversity and was sponsored by Keep America Beautiful, a nonprofit organization that "envision[s] a country in which every community is a clean, green, and beautiful place to live."

Lotusland's Assistant Curator, Anna Bower, and Special Events Manager, Kerstin Horneman, led participants in a presentation covering the history of Lotusland, its sustainable horticulture practices, and its role in plant conservation and preservation of global biodiversity. The presentation was followed by a live demonstration where participants made a kokedama "moss ball" planter to bring nature into their homes to foster appreciation of plants in our lives and in the life of the planet.

LOTUSLAND IN THE MEDIA

Feeling the Love

FOLLOWING THE RELEASE of *Lotusland, Eccentric Garden Paradise*, published by Rizzoli this spring, there has been extensive recognition in top periodicals and journals. Demonstrating nature's treasures, Lotusland showcases the Garden as a beloved horticultural and cultural masterpiece. With features in some of the largest lifestyle, nature, wildlife, and shelter publications around, Lotusland is feeling the love, and armchair travelers everywhere are seeing her secrets and being inspired to bring more beauty to their own gardens and landscapes.



Lotusland Media Mentions 2022

Visit lotusland.org/mediamentions for links to the publications.

VERANDA

FREDERIC

MODERN
LUXURY

Sunset

TOWN&COUNTRY

Santa Barbara

Clever

Greenhouse
MANAGEMENT

Montecito
JOURNAL

KQED

NOOZHAWK
the freshest news in Santa Barbara

RIBA

AD
ARCHITECTURAL DIGEST

Living

BAZAAR

Santa Barbara
Independent

BARRON'S

SANTA BARBARA
NEWS-PRESS

archyde

The New York Times

805
LIVING



THE
POINTS
GUY

KCET



695 Ashley Road
Santa Barbara, CA 93108

Nonprofit Org.
U.S. POSTAGE
PAID
Santa Barbara
California
Permit No. 163

Fall 2022

For more detailed information about upcoming events, please see page 16.

Sunday, October 23
A Day of Wellness
Curated by Palma Collectiva

Saturday October 29
MONSTERA MASH:
A Boo-tanical Stroll

Saturday, October 29
Spirits Of Lotusland:
Halloween Soiree

Saturday, November 12
Last Public Tour Day of 2022

Tuesday, November 15
Garden Lover Members Focus Tour:
The Birds of Lotusland

Wednesday, November 16
Lessons from Lotusland:
Saving the Cycads

Friday, November 18
& Saturday November 19
Educator Appreciation Days
Free!

Saturday, November 26
Members' Holiday Shopping

Monday, December 5
Garden Lover Members Focus Tour:
Treasures from our Archives

Lotusland Tour Schedule

We look forward to welcoming you to Lotusland! This season, we are offering docent and self-guided tour options. Public visitation days are Wednesdays through Saturdays.

Call 805.969.9990 or visit lotusland.org/visit to check availability and reserve your tour. Space is limited and advance reservations are required. We recommend making reservations one month in advance of your desired visit. Members receive priority access.

End of Season November 12

Lotusland will close for regular public tours on Tuesday, November 12 and re-open for the 2023 Season on Wednesday, February 15, 2023.

2023 reservations will open in early January.

Special events and limited opportunities for Members continue throughout the closed season. Visit www.lotusland.org for availability.