

Ganna
Walska



LOTUSLAND

NEWSLETTER • SPRING 2018



MADAME'S UNIQUE VISION

Unconventional by Design

LOTUS RISING

Lotusland Celebrates:
Gems of the Garden



695 Ashley Road
Santa Barbara, California 93108
805.969.3767 • www.lotusland.org

2018 BOARD OF TRUSTEES

Daniel Bifano, *President*
Belle Hahn Cohen
Geoff Crane
Lesley Cunningham
William M. Daugherty
Ian M. Fisher
Dorothy H. Gardner
David M. Jones
Joseph Marek
Suzanne Mathews
Alexandra Morse
Mimi Michaelis
Connie Percy
Eileen Rasmussen
George Schoellkopf
Mick Thomas
Caroline R. Thompson
Crystal Wyatt
Yasmine Zodeh

LIFETIME HONORARY TRUSTEES

Merryl Brown
Robert J. Emmons
Arthur R. Gaudi
Kisa Heyer

Gwen Stauffer
Chief Executive Officer

Rebecca Anderson
Director of Development

Diane Figueroa, CPA
Director of Finance

Bob Craig
Director of Marketing

Tyler Diehl
Director of Gardens and Facilities

Bambi Leonard
Membership Manager

Paul Mills
Curator of the Living Collections

Dorothy Shaner
Director of Public Programs

*Printed by Jano Graphics
Designed by Leslie Lewis Sigler*

LETTER FROM THE CHIEF EXECUTIVE OFFICER

Dear Members and Friends,

SINCE YOU RECEIVED your last Lotusland newsletter, Montecito suffered the worst natural disaster in its history — the 1/9/18 mudslide. Devastation in our neighborhood was less than a block away. Once again, the garden was spared

from destruction but suffered flooding. Lotusland was evacuated for 30 days during both fire and flood disasters and, like our residential neighbors, continues to be evacuated whenever rain is forecasted to exceed safety thresholds. We live with agonizing anticipation that sometimes leads to regrettable tour and events postponements.



It is ironic that this tragic and somber winter is also the planned kickoff to our celebration of Lotusland's 25 years as a public garden. The typical fanfare for such an auspicious milestone hardly seems appropriate while so

many are still hurting. Even Lotusland is hurting — damage from the disasters and long, ongoing evacuations have cost Lotusland millions. Now we are working with our insurance company and FEMA to help make the garden and our organization whole again. We thank the Hutton Parker Foundation for providing a grant that gave us a bit of immediate relief. While we need more help, Lotusland has withstood these disasters and will persevere. The garden has been here for 136 years — 25 of those as a community resource — and we will rise from this, like the lotus from the mud, to thrive and endure as the renowned botanical treasure of Santa Barbara.

Many of you and our neighbors have asked us what we are doing to help with disaster recovery. We are collaborating with different entities to offer free access to the garden for victims of the mudslide — and give them free memberships — as well as first responders and their families to whom every single person in this organization and community is deeply grateful. Other service collaborations are in the works.

Lotusland also sought a reprieve to lift our Conditional Use Permit (CUP) restrictions for one full weekend only, to open our gates, for free, to all residents of Montecito, but this request was declined. While we are disappointed that we cannot do more, we will continue to do what we do best — provide this community with one of the most beautiful, tranquil places in the world, where they can come to escape, grieve, wander, cry, wonder, rest, heal, recharge, renew and be inspired.

We are here for you. Our gates and our hearts are open.

Looking forward to seeing you in the garden,

Gwen L. Stauffer
Chief Executive Officer

MISSION

We preserve and enhance the unique, historic estate of Madame Ganna Walska, care for and improve its collections, and develop its conservation and horticulture programs, so they educate us, inspire us, and advance our understanding and appreciation of the importance of plants in our lives and in the life of the planet.

SPRING 2018

Contents

- 2 Letter from Chief Executive Officer
- 3 New Trustee - Joseph Marek
- 4 Unconventional by Design
- 6 In Memoriam - Virginia Hayes
- 6 Horticultural Happenings
- 7 Collection News -
Lotusland Namesake Plants
- 7 *Cymbidium* named for
Madame Ganna Walska
- 8 Docent Graduation
- 8 Japanese Garden Renovation
- 9 Members' Appreciation Barbeque
- 10 Lotusland Celebrates
- 12 The Lotus Society
- 13 Diane Hussey Dunhill -
A Lotusland Legend Leaves a Legacy
- 14 Help Make Our Wishes Come True
- 14 In Memoriam - Karen Kolb
- 15 Upcoming Events
- 19 Garden Shop



LOTUSLAND WELCOMES NEW TRUSTEE JOSEPH MAREK

JOSEPH WAS DRAWN TO GARDENING and the arts when he was a boy. Growing up in an Air Force family and living in such far-flung places as South Texas, the Mississippi Gulf Coast, the German Rhineland, and Tidewater, Virginia, he was exposed to a multitude of climates and plant communities, and to the gardening traditions in each of them.

After graduating from Yale with a Bachelor's degree in Architecture and the University of Virginia with a Master's degree in Landscape Architecture he settled in Southern California in 1994. He worked with Nancy Goslee Power in Santa Monica for over six years before establishing the office of Joseph Marek Landscape Architecture in 2001. Currently, the firm specializes in residential projects at a variety of scales throughout California.

Joseph is a licensed landscape architect in the State of California and is a member of the American Society of Landscape Architects. He serves on the Board of Directors of the Garden Conservancy and on their West Coast Council. He is also a Regional Representative for The Garden Conservancy's Open Days Program and has organized and shaped highly successful Open Days — managing a team of nearly 100 volunteers — in Los Angeles for the past ten years.

Joseph began visiting Lotusland shortly after his arrival in Southern California in 1994 and has enjoyed seeing the gardens in all seasons and over the years. He lives in Santa Monica with his partner John Bernatz and their three dogs.

Unconventional by Design

MADAME'S UNIQUE VISION

By Gwen Stauffer and Rose Thomas



ALMA MAHLER, widow of conductor Gustav Mahler and close friend of Ganna Walska once said, “Paris without Ganna is not Paris,” declaring Ganna’s significance in the gifted circle of Parisian society during the '20s and '30s.

It is equally impossible to separate Ganna Walska from Lotusland, her ultimate legacy. Many hands helped craft the garden, but they were always directed by her as the “head gardener and designer.” Her unconventional taste and unique vision created this exotic and unusual garden that is renowned as one of the top gardens of the world, and a destination for garden lovers everywhere.

A stroll through Lotusland leaves one wondering what inspired her. Ganna did not journal her ideas for the garden or sketch plans, but with a discerning eye for the unexpected, she compiled a multitude of scrapbooks on garden features that helped form her vision for the garden. Lotusland’s archives contain numerous albums on garden mosaics, horticultural clocks, tiles, shells, fountains and plants of every kind.

Ganna Walska shared her journeys and bared her innermost thoughts and personal musings in her 1943 memoir, *Always Room at the Top*. This record, along with the history of her life as described

in an abundance of news clippings and documents held in Lotusland’s archives, imparts a determined, deeply curious and observant woman with tremendous allure and great personal style. Having packed more into the first half of her life than most people in a lifetime, it is evident that she brought all her experiences and unflagging energy to the creation of Lotusland.

While living in France, Ganna maintained extensive gardens at her Chateau Galluis, ten miles outside of Versailles. The park-like property, featuring a main house attributed to the time of Louis XIII was surrounded by many ancient trees,



Horticulture clocks in one of Ganna Walska's scrapbooks

vegetable gardens, orchards, an *orangerie*, rose gardens, ponds, a garden trellis alongside a reflecting pool, shell grotto, theatre garden, and long beds of tulips along the drive to the grand chateau. Sadly, this beautiful property now only exists in photographs, but clearly Ganna valued nature and embraced the worth of gardens long before she arrived in Santa Barbara.

In *Always Room at the Top*, Ganna tells of her travels — undoubtedly she visited many outstanding gardens in Europe and the U.S. The pebble mosaics below Lotusland's geranium terrace were likely inspired by ones she had seen in Italy and other European countries. Her shell grotto at Galluis informed both the rooster grotto in Lotusland's Bromeliad Garden, and the shell fountain in the Aloe Garden. She incorporated "grotesques" she brought with her from Galluis into her Lotusland

Theatre Garden, later adding more of them while she lived at Lotusland. These stone sculptures, featured in many of the important gardens of Europe, represent

"Never could I do anything comfortably or halfway."

archetypes from the *Commedia dell'arte*, a theatre style originally from Italy and popular throughout Europe in the 16th to 18th centuries.

Regarding Ganna's first passion, the study of music, she wrote in her memoir, "It seems to me that the best way to develop creativeness is to learn the technique of the great artists and to imitate them. First, do as well as they do; then try to surpass them in order finally to surpass yourself." The lessons she applied to her musical career conveyed in her approach to building gardens. Because of her insatiable curiosity she studied all aspects of theatrical performance, including costumes, staging and props — training that helped her succeed as program director for her Théâtre des Champs-Élysées, and surely bolstered her flair for drama that saturates Lotusland.

Ultimately, Ganna infused the garden with her distinctive style and passions. Her love of gemstones and jewelry design translated into garden paths lined with slag glass, and the placement of large pieces of amethyst and other minerals among groups of plants. Her originality in using mass planting, tiles, shells, coral, minerals, glass, concretions and other materials to create a whimsical

landscape is validation of a woman who approached the world on her terms, "Never could I do anything comfortably or halfway." Ganna worked with well-known

garden designer Lockwood de Forest to achieve visual effects in the garden, according to her wishes. But when asked to plant unusual cacti in front of the main house, he was skeptical and urged her to reconsider. Ganna stood firm and later he congratulated her on the striking effect, writing, "You are wonderful. I never would have thought of using cactus at the front door, or many of the other plantings you suggested. They are very handsome and I congratulate you."



Euphorbia adorn the front of the Main House

As the self-described "enemy of the average," with "a particular aversion to following the multitude in style of any kind," Ganna's elan radiates throughout the garden, as no average person could envision such an extraordinary and timeless garden. "For I loved Beauty, Beauty with a capital "B," she wrote.

At the age of 55, Ganna brought her inexhaustible energy to building Lotusland, but also took pause to relish the fruits of her labor and relax in her pool, practice yoga, meditate and follow her spiritual calling. Now, through her legacy, Lotusland is available for all to immerse in its remarkable splendor and, by her words, find "their place in the sun."



LEFT: Rooster grotto in the Bromeliad Garden RIGHT: Grotesques in the Theatre Garden



IN MEMORIAM

Virginia Hayes

1950-2018

Virginia Hayes, Lotusland's recently retired Curator of the Living Collection had a remarkable career in the garden that spanned 25 years. She played a major role in developing the plant records, library cataloguing, photographic archives, and Ganna Walska's history and personal archives. Madame's unique personality and remarkable life story were things Virginia absorbed, studied and perhaps even embodied to a degree, by living in a small house in Madame's treasured garden for more than two decades. Steve Timbrook, Lotusland Director Emeritus, originally hired Virginia and describes her as "bringing to the position a wide knowledge of the plant groups most important to Lotusland. It took very little time for me to realize what a great addition she was to Lotusland's horticultural staff." One of her most far-reaching accomplishments has been preparing docents to lead tours. Virginia helped develop curriculum, planned the courses and trained every docent from 1992 until her retirement. Her encyclopedic knowledge was daunting, and many new docents wondered how could they ever do justice to the garden the way Virginia did. In her always calm, reassuring way, she would simply advise, "Let the garden speak for itself." Chief Executive Officer Gwen Stauffer described Virginia's contributions this way: "She applied her incredible knowledge of plants to build these outstanding collections, and her passion for sharing her knowledge with others helped make Lotusland an important resource both locally and internationally."

Teacher, mentor, author, plant-geek, photographer, environmentalist, mother, scientist, web-master and friend. Virginia's wonderful spirit and dedication to the garden have created a lasting legacy and we are forever grateful for all she has done for Lotusland.

Horticultural Happenings

COMPOST TEA

A Potent Nutrient Delivery System

Compost tea became a staple at Lotusland in 1994, when we started brewing and using it as part of our new sustainable horticulture program.

Compost is "brewed" in a mesh bag, sometimes with added nutrients, in a 100-gallon tank of water for 24 hours. This process creates a liquid form of compost that can be sprayed anywhere it is needed in the garden, directly on plants or on the soil. After brewing, we may add organic fertilizers to boost the nutrient level for nutrient-demanding plants like roses, begonias, and ferns. Compost tea applications accomplish several tasks, including fertilizing plants, improving soil structure and microbial activity, and protecting plants from disease. The secret of the tea's efficacy is the dynamic nature of its microbes, which produce a wide range of nutrients that become available to plants during the microbes' metabolic processes. Compost tea must be applied shortly after it is brewed, while the microbes are still alive and active. We brew and apply compost tea for seven months, from mid-March to mid-October, and apply over 50,000 gallons of compost tea every year. Applying compost tea throughout our gardens epitomizes the paradigm shift in horticulture that all botanic gardens are finally embracing, to use natural materials and environmentally friendly techniques, build soil health to improve plant health, and create lasting results.

—Corey Welles



1. After a year in the compost pile, the material is sifted and loaded into a tea bag for brewing.
2. Nutrients are added to increase the microorganisms during brewing.
3. The 100 gallon brewer mixes the solution for 24 hours and the resulting tea is then diluted with four parts water for garden application.
4. Fish hydrolysate and other organic fertilizers boost the nutrient level.

Lotusland's Namesake Plants

THERE IS NO DOUBT that Madame Ganna Walska made an impact on the horticultural world, using her personal touch to create her beloved Lotusland. With its world class plant collections and avant-garde horticulture, a number of plant cultivars have been named to honor both Lotusland and Madame Ganna Walska.

One of those plants is *Astrophytum myriostigma* 'Lotusland,' a monstrose cactus that has heavily flocked, warty stems. It was discovered in the garden, presumably by Charlie Glass during his time working at Lotusland, then propagated and put into the nursery trade. *Iris* 'Lotusland,' a bearded iris that hosts large peach-pink flowers, was created in 1999 by Keith Keppel who was inspired by photos of Lotusland and then personally gifted the plant to the garden when he came to visit. *Begonia* 'Lotusland' is without a doubt one of the most magnificent plants named for Lotusland. Renowned local begonia expert Rudy Ziesenhenné had long wanted to name a begonia for the legendary estate and when a chance seedling appeared that was head and shoulders above the rest, he had found the perfect plant.



Begonia 'Lotusland'

Plants have also been named to celebrate the creator of Lotusland, Madame Ganna Walska. A tropical water lily with large and stunning pink to lavender flowers was named *Nymphaea* 'Madame Ganna Walska' by hybridizer Jack Wood in 1992. It can be viewed when you stroll the water garden during the summer and fall. There are also two eye catching bromeliads that were created by master hybridizer Ed Hummel in the 1970s, an *Aechmea* and a *Cryptanthus* named to

acknowledge Madame Ganna Walska. In the insectary garden you'll find *Bidens* 'Madame Ganna Walska,' with hot pink flowers attracting a myriad of insects.



TOP: *Nymphaea* 'Madame Ganna Walska'
BOTTOM: *Bidens* 'Madame Ganna Walska'



Cymbidium Named for Madame Ganna Walska

We are pleased to announce that a new, vibrantly colored *Cymbidium* hybrid has been named in honor of Madame Ganna Walska of Lotusland. *Cymbidium* 'Madame Ganna Walska' was specially created by Andy Easton of New Horizon Orchids and has been officially registered with the Royal Horticultural Society. This new orchid was on display at the 73rd Santa Barbara International Orchid Show as part of Cal-Orchid's display. Madame Ganna Walska loved orchids, especially *Cymbidium*, and had masses of them on one of her patios near the main house and also planted in raised beds under a nearby oak tree. This new orchid not only acknowledges her passion for orchids, but honors her creation and preservation of Lotusland in this 25th anniversary year celebrating Lotusland as a public garden. — Paul Mills



JAPANESE GARDEN RENOVATION Underway!

LARGE, EARTH-MOVING EQUIPMENT rolled into the drained Japanese Garden pond last November to begin its excavation as a first step toward rebuilding it. Excavators removed tons of clay, (reused to level out our compost fields), increasing the pond's depth and reshaping the edges to improve the habitat for the koi fish.

The Japanese Garden renovation is an immense and complex project that requires a meticulously detailed weekly schedule to keep the construction team on track to meet the completion deadline. More than that, it carefully timed the execution of tasks that could disrupt public tours, events and operations to take place in winter when the garden is closed between tour seasons.

Our carefully devised schedule was quickly interrupted by the Thomas Fire that forced Lotusland to evacuate and all activities to cease for three weeks. Upon returning to the project in the first week of January, the project team of a dozen highly talented and intrepid men and women got right back to work, vowing to catch up. Their resolve and our schedule was tested again with the mudslide that compelled Lotusland to evacuate and construction to cease for another three weeks.

Despite the loss of time and complete ruination of our meticulous schedule, our plucky construction team quickly set on a revised course of action and remains committed to finishing the project by our original deadline of March 2019. More immediately, they accomplished the most disruptive work of trenching the main drive and installing the vault to house the pond's new biofiltration system before we opened our gates for tours on February 16th. That was no small feat, as the trench was 30 feet wide and 15 feet deep, and the vault installation came in three pieces, each on a flatbed trailer and requiring a cantilevered crane to set in place. The team scrambled to install the biofiltration plumbing and repair the driveway by mid-March so tours could carry on as usual in spring.

The fire and mudslide affected not only the construction schedule; our efforts to finish the project's funding campaign were also thwarted by the disasters. Fortunately, we broke ground with 85% of funds raised — over \$3.9 million toward our \$4.6 million goal. With slightly less than \$700,000 left to raise and our goal in sight, we hope all our members and supporters will be inspired to get us to the finish line. Contact Rebecca Anderson at 805.969.3767, ext. 104 to learn how you can help.



ABOVE LEFT: Equipment excavating the Japanese Garden pond. **RIGHT:** Vault that houses the new biofiltration system.



FROM LEFT: Sylvia Limon, Rodney Baker, Laurie Zalk, Susan Braden, Deborah Meade, Sandy DeRousse, Suzanne McKenna, Claudia Borfiga, Ali Todhunter, Eve Savage, Carole Kennedy, Patti Prairie.

Lotusland Welcomes 12 New Docents

Lotusland recently graduated twelve new docents. After completing a rigorous twelve-week course, this group of dedicated individuals is ready to lead tours, interpret the plant collections and share the fascinating history of the garden. The docent training program provides topnotch lectures, guest speakers, classes and training over a four-month period. Our next docent training begins in September 2018. For more information, please contact Volunteer Coordinator Kitty Thomassin at 805.969.3767, ext. 112.



JUNE 21 & JUNE 22

Members' Appreciation Barbeque

to Celebrate Members and Lotusland's 25th Anniversary

THIS YEAR WE ARE CELEBRATING OUR VALUABLE MEMBERS WITH A NEW EVENT

– a rare opportunity to dine in the garden. Please join us at one of our two early evening barbeques in the garden with drinks, activities and lots of fun. Choose an evening that works best for you; either Thursday, June 21 or Friday, June 22 from 4:00 to 7:00pm.

Members can purchase tickets and are allowed one vehicle with family or friends. Enjoy the scrumptious flavors of barbeque with grilled organic chicken, pulled pork, roasted veggies and an abundance of tasty side dishes. The meal will be prepared by the acclaimed Santa Ynez VALLEY PIGGERY. Lotusland will serve complimentary lemonade, ice tea, coffee and offer a wine and beer cash bar or we encourage you to BYOB. For dessert, enjoy delicious local ice cream!

Shared table seating is available for dinner or bring a blanket for leisurely picnic-style lawn seating. Guests will celebrate Lotusland in the late afternoon light and may join in a variety of fun activities for all ages.

Remember, vehicles are limited by our Conditional Use Permit and you will need to carpool. Don't delay mailing your Reservation Form early to assure your one vehicle space is reserved. There will be a wait list. Members are welcome to purchase tickets for family or friends that fit into one vehicle all of which will be valet parked. Tickets cost \$25 for teens and adults, \$10 for ages 3-12 years, free for 2 and under.

For questions or to have a membership brochure mailed to friends, please call Member Services at 805.969.3767 and speak with Tara Taylor, ext. 115 or Bambi Leonard, ext. 120.

PLEASE RETURN THE RESERVATION FORM TO:

Ganna Walska Lotusland, Members' Appreciation Barbeque,
695 Ashley Road, Santa Barbara, CA 93108.

Reservations are taken based on postmark. Your confirmation, tickets and a map will be mailed to you upon receipt as long as space is available.

Members' Appreciation RESERVATION FORM

Circle your date to attend:

Thursday, June 21

Friday, June 22

of Adult or Teen tickets @ \$25 each _____ x \$25 = _____

of Children tickets @ \$10 each _____ x \$10 = _____

Attendees 2 and under are free _____ x \$0 = _____

Total = _____

Member Name(s): _____

Street / City / State / Zip: _____

E-mail: _____

Knowing children's ages helps us plan activities

Check #: _____ made payable to **Ganna Walska Lotusland**

We accept Visa, M/C Discover and AmEx

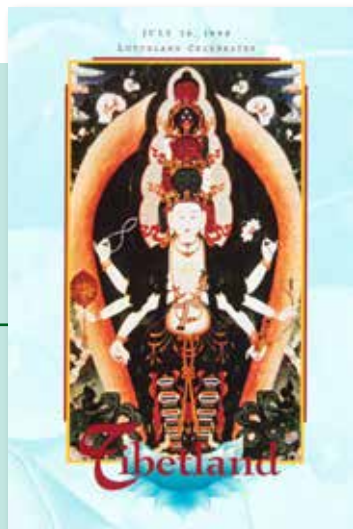
Card #: _____

Exp. Date: _____ Security Code: _____

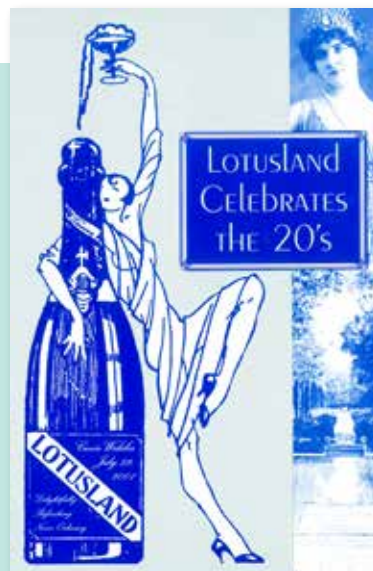
Please call by June 15 if your plans change as will have a wait list.
Refunds not available after June 16.



ABOVE: Lotusland's first gala in 1995, *Twilight with Madame Butterfly*, celebrated Madame Ganna Walska's opera career and featured a striking Erté costume illustration on the cover of the event program.



ABOVE: 1998's event *Tibetland* honored Madame Ganna Walska's first name for her Montecito home, prior to renaming it Lotusland. A special gallery of her Tibetan art collection was exhibited at the event.



ABOVE: In 2001 the event celebrated the 1920s paying tribute to the Gavit Era of the garden, when the Main House and many of the formal gardens were created, and to Madame Ganna Walska's life in Paris in the early 20th century.

Lotusland Celebrates

Lotusland Celebrates, Lotusland's signature event and our annual fundraising gala, is the hottest ticket of Santa Barbara's summer social scene and is always a sold-out affair.

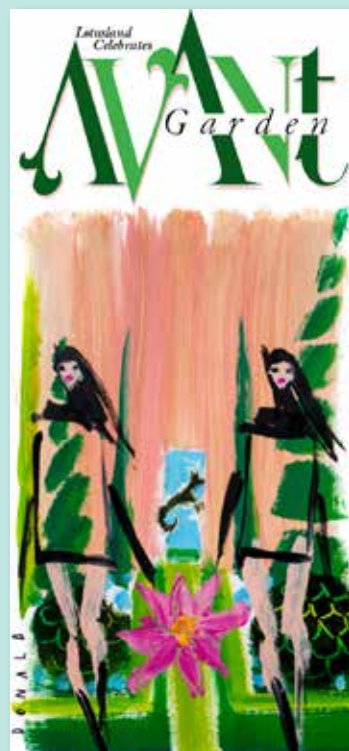
Born from the creativity of Merryly Brown, Lotusland Lifetime Honorary Trustee, guided by the Board of Trustees and developed with the leadership of a creative and hardworking volunteer committee, the event celebrates a new theme each year while raising critical funds to care for and operate the garden.

2018 marks the 24th anniversary of this iconic event, which continues to grow and develop year after year with new exciting themes and garden entertainment. We look forward to seeing you this year and celebrating together!

For sponsorship and ticket information, please email events@lotusland.org.



ABOVE: *Lotusland Celebrates: Summer of Love* in 2006 filled the garden with the sights and sounds of 1967 and re-imagined Madame Ganna Walska as a musician of that era.



ABOVE: *Lotusland Celebrates: Avant Garden* in 2017 honored Madame Ganna Walska's creativity and avant-garde elegance and featured iconic Italian fashion house Valentino presenting fashion in the gardens.

LEFT: 2013's *Romancing the Garden* followed Madame Ganna Walska's romantic journey through her six husbands to her greatest love, her gardens at Lotusland.





FROM LEFT: Ganna Walska wearing a signature Belperron brooch; 2018 Honorary Chair, Hania Puacz Tallmadge; Lotusland Celebrates Co-Chairs for 2018; Belle Hahn Cohen, Yasmine Zodeh, Nati Smith, Eileen Rasmussen

Lotus Rising

LOTUSLAND CELEBRATES: GEMS OF THE GARDEN

OUR THEME THIS YEAR is particularly poignant: the July 28 event will honor the symbol of the lotus, and the garden's existence, as our community recovers and rises from recent natural disasters.

The 2018 gala will focus on the garden's most rare and beautiful plants, and offer a uniquely intimate experience with these special gems of the garden. Specimen plants will be featured alongside an artistic installation by the legendary Russell Young, an American-British Pop artist widely known for his large-scale silkscreen paintings of cultural icons. Russell will debut a new collection of abstract paintings inspired by Lotusland for gala guests.

Also on display, some for the first time, are original archival drawings of the jewelry designs of Suzanne Belperron. In 2015, Belperron LLC opened its flagship salon in over forty years in New York, featuring vintage Belperron jewels and new pieces created from her archive of over 9,200 designs, some of which will be displayed at the July 28 Lotusland Gala. The Belperron salon features a large array of vintage pieces, many from important private collections from around the world, including that of Madame Ganna Walksa. Several of her original pieces will also be shown at this summer's Lotusland Celebrates event.

SAVE THE DATE for this unforgettable garden odyssey, accompanied by an elegant seated dinner and live auction. Presale reservations via sponsorship are available April 20 by contacting Courtney Tentler at 805.969.3767, ext. 116.

For a private appointment please call 212.702.9040.

Announcing principal partner
sponsors of the 2018 Gala

VERDURA  BELPERRON

TWO REVOLUTIONARY
TWENTIETH CENTURY MASTER JEWELERS

In the pantheon of master jewelers from the twentieth century, Suzanne Belperron (1900-1983) stands apart as the only woman. Elegant and audacious, Suzanne Belperron pioneered a new aesthetic in jewelry, yet never sought recognition. Her designs remain sensual, tactile and arrestingly modern. Belperron is widely recognized as one of the most influential designers of the 20th century. Asked why she never signed her jewelry, she replied "My style is my signature."

Verdura was established in 1939 by Fulco di Verdura, a Sicilian duke who began his career as Coco Chanel's head jewelry designer. After eight years with Chanel and, most notably, designing the Maltese Cross brooches and cuffs, Verdura embarked to America in 1934. With a Hollywood connection through his close friend Cole Porter, Verdura designed colorful jewels for stars of the era including Greta Garbo, Rita Hayworth and Katharine Hepburn. Eventually, Verdura settled in New York on Fifth Avenue and immediately gained a following with fashion's best-dressed list. Verdura, appointed "America's Crown Jeweler" by the *New York Times*, was one of the premier jewelry designers of the 20th century.

When shopping at Verdura (verdura.com) and Belperron (belperron.com) anytime through August, please mention Lotusland when you call or visit to ensure a percentage of sales benefits Lotusland.



Do you Love Lotusland? Join *The Lotus Society*.

Seeded by one woman's vision and perpetuated by the generosity of many, *The Lotus Society* is the custodian of Lotusland.

The Lotus Society is a group of Lotusland supporters who have made a lasting commitment to conservation by making an endowment gift to Lotusland or by naming Lotusland as a beneficiary in their estate plans. *The Lotus Society* is a way for us to recognize this profound contribution to Lotusland's future.

We thank our *Lotus Society* members for their dedication to preserving the garden and its diversity of plant life and for their foresight in providing for its future.

WAYS TO JOIN

- Outright gifts to Lotusland generate a full income-tax charitable deduction.
- Outright gifts of appreciated securities are deductible at fair market value, with no recognition of capital gains — a great tax benefit!
- Gifts of personal property and real estate.
- Bequests
- Make us the irrevocable owner and beneficiary of a life insurance policy (when made during your lifetime, you may deduct annual gifts that offset premium payments)
- A planned gift that returns income to you, such as a charitable gift annuity.

Your planned gift is a significant addition to our long-term financial strength and our ability to meet the challenges and opportunities the future will bring. However, today's efforts are supported through annual gifts and we greatly appreciate and encourage any annual support you may want to consider.

INTERESTED IN MAKING A GIFT?

To learn more about how gift and estate planning can benefit you and the garden. Please contact us by calling 805.969.3767, ext. 104

THANK YOU TO OUR GARDEN LOVERS MEMBERS

CHAMPION

Rachel & Meir Bartur

VISIONARY

Amanda Bacon & Gregory Rogove
Ted & Coleen Friedel

STEWARD

Patricia & Larry Durham
Linda & Fred Gluck
Katherine Kims & Eric Ng
Mercedes Millington & Jack Mithun
Connie & John Percy
Lady Leslie Ridley-Tree
Patty & Michael Rosenfeld
Lynda Weinman & Bruce Heavin

GUARDIANS

Tom Barton
Tania & John Burke
Sophie & Derek Craighead
Hermine & Gary Gallup
Mr. Arthur R. Gaudi
Cyndee Howard & Lesley Cunningham
Kim L. Hunter & Paulo P. Lima, Ph.D.
Carole MacElhenny
Suzanne & Gilbert Mathews
Dennis McGowan & Rudie van Brussel
Mr. & Mrs. Gary Uwé Rollé
Jeffrey F. Romano & Stan A. Shayer
Stephen P. Schaible & Daron S. Builta
Mrs. Judy Shea
Mrs. Anitra P. Sheen
Susanne & Gary Tobey
Mr. Christopher J. Toomey
Alison & Lyle Turner

A Lotusland Legend Leaves a Legacy



DIANE HUSSEY DUNHILL is an artist-photographer who uses plants as her medium, much like Madame Ganna Walska. Also like Madame Walska, Diane is leaving a significant portion of her estate to Lotusland, to ensure it remains a vibrant center for horticulture and art, for the inspiration of future generations. Diane met Madame Walska just once in the gardens, and remembers her as a beautiful and friendly hostess.

A resident of Santa Barbara since 1972, she moved from Glendale to attend the Santa Barbara Art Institute where she earned a BFA in Sculpture and Ceramics. Over time, her artistic passion has crept from fine arts into the creation of stunning plant scapes and landscapes.

Service as a charter member and board member of the Santa Barbara Cactus and Succulent Society increased her passion for the plants that would become her livelihood for the next

four decades. Diane was hired in 1978 by Abbey Garden Nursery, originally created by Bob Foster and Charles Glass in Reseda. After being purchased by John and Mary Bleck it was based on Toro Canyon Road until 1981 and later relocated to Carpinteria. During her 17 year tenure, she ascended the ranks and ultimately was responsible for many areas of operations, including creating their 56 page international mail order catalog. In 1978, Frank Horwood introduced her to Bob Foster, who later became her husband. She attended Bob's daughter's wedding at Lotusland, wearing an orange sari and her signature gold nail polish, and remembers fondly her own romance that was born in the gardens. Bob and Diane married in 1991, and their lives together were full of remarkable plants and the people who grew them.

With Bob, and his business partner Charlie Glass, the first professional Director of Gardens hired by Ganna Walska, Diane became a central figure — not only in Bob's life, but in the southern California horticultural scene, and at Lotusland.

At Lotusland, Diane led some of the first docent trainings, providing information about the plants at the invitation of former Curator, Virginia Hayes and then Executive Director, Steve Timbrook. She has served the garden as a plant donor, providing more than 200 plants for our collections and the Exceptional Plant Auction, has lectured and educated many on the care and cultivation of succulents, and other plants. She also provided the first plants for the giant clock in the Topiary Garden after its renovation.

Just a few of her gifts include some of the euphorbias you see on the Main Drive when approaching the home, as well as numerous begonias and bromeliads. It was Diane who, after giving a lighthearted slide program on succulent care and cultivation, introduced Paul Mills, current Curator of the Living Collections, to Lotusland in 1995. He was hired by Steve Timbrook shortly thereafter.

Lotusland docents, donors and many garden enthusiast groups have visited Diane's home garden, which is a xeriscaped collection of succulents cascading a dry creek bed drainage and rock garden that Diane designed and built herself. Diane's gardens have twice been featured in *Sunset Magazine*.

Diane earned the Bouquet of the Year Award in 2009, the highest honor the Santa Barbara County Horticultural Society bestows to a person or organization that has excelled in the advancement and promotion of horticulture in the Santa Barbara area. She joined a prestigious list of previous award winners, including Pearl Chase and Madame Ganna Walska. It's fitting that these creative women who share a passion for gardens and horticulture, both left visionary gifts to protect and sustain Lotusland as their personal legacies.

We recognize and appreciate Diane for her multi-faceted involvement in Lotusland — in the past, and the present and with her recent gift — long into the future.

WISH LIST

Help Make Lotusland's Wishes Come True



Dell Wyse D90D7 Thin Client - Reservation System Hardware Upgrade

Our Visitor Services department depends on a complex computer based system to manage reservations. We are currently in the process of upgrading the hardware and need another \$3,200 to complete the project.



Two iPads

Lotusland utilizes the portability of iPads for processing memberships, purchases during events and for record keeping. The cost for two 32GB iPads with Wi-Fi and cellular service is \$1,200; or \$600 each.



Twelve Hystera PD502 Two-Way Radios

These radios are integral to our guest's safety while on tours. Effective communication with the office and kiosk is an important part of our safety program. \$450 each

TO DONATE, please contact Rebecca Anderson, Director of Development, at 805.969.3767, ext. 104 or randerson@lotusland.org. Thank you for your help with our Wish List items. These tools make a big difference in our day-to-day operations, and we are very grateful for your support.



IN MEMORIAM

Karen Kolb

Karen Kolb passed away peacefully at her home on February 27 surrounded by her many friends and family. Karen and her husband Harry, a longtime Lotusland Trustee, shared a great love of the garden. She attended the first docent training class and continued giving tours for 23 years. Karen's advice to new docents was to act as if Madame Walska was with you on each tour and to keep Madame in mind when discussing her life and love of the garden. Karen's devotion and joy for Lotusland demonstrated itself as she and Harry were one of only two couples who attended all of the first 22 *Lotusland Celebrates* annual galas. Karen was a member of *The Lotus Society* and a Lotusland member since 1993. Karen would tell a wonderful story saying, "someone in a docent class told me that one of the old copper zodiac figures that used to mark the hours on Madame's horticultural clock was for sale at an antique shop in Summerland. Harry and I went to look at it and we both just knew it belonged at Lotusland." They bought the figure, Scorpio, and donated it to Lotusland where for many years it hung in the foyer. When the clock was restored in 1998, that original figure helped artist Sam Dematchke decide how to recreate all twelve zodiac signs.

As with the rest of our community, all of us at Lotusland will dearly miss Karen's charming smile and vivacious personality. We are deeply grateful for everything she did throughout the years to help Lotusland thrive.

In lieu of flowers, the family respectfully suggests contributions be made to Ganna Walska Lotusland in Karen's memory.

UPCOMING EVENTS



March 9 to May 19 **Building a Botanical Nirvana:** **The Story of Lotusland**

WE KICK OFF OUR 25TH SEASON with our main exhibit, Building a Botanical Nirvana: The Story of Lotusland. On display in the Pavilion, all garden visitors are able to view a fascinating chronology of the development of Lotusland juxtaposed to the life of Ganna Walska. Historic milestones that have helped define the garden are highlighted. The exhibit will run through May 19. For information and reservations call 805.969.9990.

May 12 • 1:30 to 4:00 PM **Mother's Day Tea and Tour**

THE PERFECT TREAT FOR SOMEONE SPECIAL in your life! Celebrate Mother's Day — the Saturday before Mother's Day — by touring the garden, enjoying tea and refreshments on our Pavilion Patio. Tours are docent-led or members may explore the garden on their own. Tickets are \$85 for members, \$95 for non-members and \$45 for children ages 3-12. For information and reservations call 805.969.9990.



Saturday, June 9 • 5:00 to 8:00 PM **Summer Bounty Dinner: A Lotusland Food** **and Wine Fête**

CELEBRATE AN ENCHANTING EVENING in the garden with an intimate dinner served on Lotusland's Great Lawn. Enjoy a special farm-style feast, taking inspiration from the garden and featuring locally sourced ingredients, including a few from Lotusland's orchards. Dave Potter of Municipal Winemakers & Potek Winery will provide the wine pairings. Invitations will be mailed in May to all *Garden Lover* members. Cost is \$275 per person (\$175 is tax-deductible). Space is limited to 30 *Garden Lover* members. Please contact Bambi Leonard at 805.969.3767, ext. 120 or bleonard@lotusland.org to purchase tickets or for more information.

UPCOMING EVENTS



June 1 to July 21

Darshan Photography Exhibit

PHOTOGRAPHER MANJARI SHARMA, born and raised in Mumbai, India, makes work that is rooted in portraiture addressing the issues of identity, multiculturalism, and personal mythology. Manjari, who has been recognized, awarded, published and exhibited internationally, will exhibit nine large pieces from her *Darshan* series of stunning photographically recreated, classical images of Hindu Gods and Goddesses that are pivotal to mythological stories in Hinduism. The exhibit is part of the regular garden tour.

Sunday July 8 • 2:00 to 6:00 PM LotusFest!

EXPERIENCE LotusFest! – a wine and beer tasting festival in Santa Barbara's most exquisite setting. Join us for an extraordinary afternoon of libations, live music and delectable hors d'oeuvres as we celebrate the spectacular flower that is Lotusland's namesake. This is a unique opportunity to spend an afternoon exploring the garden while sampling some of the area's finest wines and beers. There is no better place for a party than Lotusland. Early bird pricing before June 1 is \$90 members, \$100 non-members. After June 1, tickets are \$100 for members and \$115 non-members. Reservations are required, please call 805.969.9990.



Gardens in Paradise RESERVE NOW!

A RARE OPPORTUNITY TO EXPERIENCE THE MOST EXQUISITE AND STUNNING PRIVATE GARDENS.

Join us for an exclusive garden visitation series in partnership with The Garden Conservancy. All tours feature a noted garden expert for greater understanding of the history and horticulture of the properties and an intimate social/culinary experience. *April, May and June tours are sold-out.* Limited space remains for the September 20, October 20 and November 15 tours. To make a reservation or for more information, please call 805.969.3767, ext. 104.

LOTUSLAND GRATEFULLY ACKNOWLEDGES DONATIONS

December 2017 and January, February 2018

THE LOTUS SOCIETY

ENDOWMENT CONTRIBUTIONS

Judy & David Jones

CACTUS GARDEN ENDOWMENT

Dr. Carrie Towbes & Dr. John Lewis

GRANTS AND SPECIAL PROJECTS

SUSTAINABLE PLANT HEALTHCARE POSITION

Orange County Community
Foundation

FOURTH GRADE OUTREACH PROGRAM

Carol & Robert Bowen
The Brian & Patricia A. Herman Fund
at Community Foundation
Santa Cruz County

WATER SYSTEM REPAIR

Patricia & Larry Durham

INSECTARY GARDEN

Debra & John Piot

SYCAMORE CANYON BEAUTIFICATION

Suzanne & Gilbert Mathews
Mr. Mark Smith & Ms. Pamela Massey

JAPANESE GARDEN RENOVATION

Bernadine & Herb Aldwinkle
Alice Tweed Tuohy Foundation
Gwen & Henry Baker
Sidney Stern Memorial Trust

GIFTS FOR THE GARDEN

Anonymous
Barbara & John Ahlman
Bernadine & Herb Aldwinkle
Vivien Alexander
Tamara Alteri
Amazon Smile Foundation
Anita & Chris Anderson
Ann Jackson Family Foundation
Pamela & Michael Avnaim
Michael Bakish & Peter M. Hirsch
Al & Rebecca Barkley
Yvonne & David Bazinet
Mr. Roderick Beattie
Ms. Donna R. Benaroya
Paulette Berret
Daniel Bifano & Allan Brostrom
Penelope Borax & John Donald
Jim & Ruby Bradburn
Donna & Glenn Bradford
Louise & Ivana Bramson
Brian Brickman & Mark Mettleton
Laura Bridley
Cheryl Broome
Mr. & Mrs. M. Peyton Bucy
Julie Bush & Tom Gibbons
Connie & Nigel Buxton
Pat & Ron Caird
Judy Cardinal
Joyce & Richard Carnovale
Mr. & Mrs. Timothy Casey
The Charles Engelhardt Foundation
Patsy Clark
Carol Cohen
Ms. Linda Conger
Elizabeth Corden & Kenneth Shannon
Joseph & Bridgid Costa
Harry Curtis
Mr. Oswald J. Da Ros
in memory of Kathleen E. Da Ros
Kathleen Da Ros Mackins
Mariacristine & David Dart
James & Diane Davis
Renee De Jong & Ronald Camp
Linda Demeulmeester
Tom Dennis & Chela Weiler
Anne & Jeffrey Donahue
Mr. & Mrs. James Drasdo
Patricia & Larry Durham
Mr. & Mrs. Donnelley Erdman
Sintija & Harry Felder
Rosalind G.A. & Ronald Fendon
Turner Fishpaw
in honor of Eric Nagelmann

John Fishpaw & David Alvarez
in honor of Eric Nagelmann
Hon. & Mrs. Paul G. Flynn
Kristen Fry
Ms. Debra Ann Galin
Marguerite Gamo
Dorothy & John Gardner
Anne & David Gersh
Danielle Greene
Mr. Paul F. Glenn
Amy Gordon
Dr. Leonard Grabowski
Alma Gray
Nancy & Robert Gregory
Mr. & Mrs. James B. Hartle
Ms. Deanna Hatch
Trip Hawkins & Lisa Proctor
Mr. John Hayes
Vicki & Bob Hazard
Jane & Stan Hirst
in appreciation of these stunning gardens
Mrs. Joanne C. Holderman
Ms. Lisa Hubbard
Karna Hughes
Kathy Ireland
Kyle Irwin & Jens Sorensen
Dee & Stephen Jones
Lauren Katz
in honor of Crystal Wyatt
Mrs. Margaret Kelly
Kim & Soren Kieler
Sandra Krause & William Fitzgerald
M.A. Kruse
Ms. Marie Larkin
Mr. & Mrs. Gregg A. Leach
Tony & Jean Lehman
Jill & Neil Levinson
in honor of Crystal Wyatt
Mr. Harlis Maggard
Siri & Bob Marshall
Ms. Erma Martin
Kathleen Marvin
Laurie Marx & Anthony Mangini
Lorraine & Tim McGrath
Terri & Jack McKeon
Rebecca Metcalfe
Mimi Michaelis
Courtney Miller
Lori & Bruce Moss
Mr. & Mrs. John Mozart
Jillian Mullen
Kathy Musial
Ms. Barbara Nagle Statler
Donivee & Merrill Nash
Network For Good
Lisa O'Connell
Donna Oehlberg
in memory of Jim Doordan
Kathy O'Leary
Mr. & Mrs. Gerald Parent
Hensley & James Peterson
Ms. Judith Petraitis
Pleasant Valley Garden Club
in appreciation of Corey Welles'
presentation
Mr. Philip Pollastrino

Colleen & Lars Poulsen
 Patti Prairie & Buzz Hochberg
 Marcia & Ronald Radelet
 Rachel Ramsey
 Marlene Ray
 Eileen & Charles Read
 Rachael Reyna
 Mr. & Mrs. Gary Uwé Rollé
 Mr. & Mrs. Edwin Rosenblatt
 Patty & Michael Rosenfeld
 Strawn & Richard Rosenthal
 Dr. & Mrs. Richard Ross
 Jay & Talia Roston
 Caroline Rutledge
 Patricia Ryan
 Alber Saleh
 Tom & Joan Schaumberg
 Megan Schoppe
 Max Schull
 Ms. Jean Schulz
in honor of Lamar Transky
 Ms. Jean Schuyler
 Lynne Scott
 Margaret Swift Seaman
 Barbara Shattuck Kohn & A. Eugene Kohn
 Patricia Sheppard & Ernie Witham
 Holly & Lanny Sherwin
 Mr. Leonard Somdahl & Ms. Carol Moore
in memory of Ellen
 Kristin St. John
 Mr. & Mrs. Warren Staley
 Carol Terry
in memory of Bill Paylen
 Christina & Geoff Thielst
 Dr. Bruce H. Tiffney
 Catherine & David Tilman
in honor of The Chemnicks
 Drs. Jan & Steven Timbrook
 Susanne & Gary Tobey
 Transformation Trust
 grant directed by Sheila Klink
 Cricket & Terry Twichell
 Mr. Sherman Vincent & Lien Nguyen
 Mrs. Deanne G. Violich
 Dr. & Mrs. Mark Vuchinich
 April & Charles Walton
 Ms. Victoria Ward
 Mr. Dennis M. Whelan
 Barbara & Tex Williams
 Crystal & Clifford Wyatt
 Laura & Geof Wyatt
 Richard Yates
 Merry! & Chuck Zegar Family Fund
in memory of Michael Towbes
 Russell Zink & Sean Callaway
in memory of Henrietta Zink
 Mr. & Mrs. Dick Zylstra

IN-KIND DONATIONS

Carolyn & Dennis Egus
 Clay Tedeschi

NEW LOTUSLAND MEMBERS

We welcome new members who joined in December 2017 and January, February 2018

GARDEN LOVER MEMBERS

GUARDIAN

Rachel & Meir Bartur

VISIONARY

Amanda Bacon & Gregory Rogove

ADVOCATE

Susan & Peter Cheney

GENERAL MEMBERSHIPS

FRIEND

Joseph Blankholm & Jacqueline Morris
 Winnie & Hod Dunbar
 John Fishpaw & David Alvarez
 Trip Hawkins & Lisa Proctor
 Heather Kavanaugh
 Irene & Bruce Klores
 Joy Margolis
 Maryann Rainey & Wendy Pelton
 Linda & David Rosedah

FAMILY

Annamarie & Thomas Alteri
 Mary & Joe Andrulaitis
 Carolyn C. Ingbar
 MaryEllen & Dan McCammon
 Magnus Ramsey
 Stephanie & Peter Smillie
 Howard Stern & Beth Ladin

DUAL

Anonymous
 Earl Arnold & Karna Hughes
 Scott Borie & Barbara Regis
 Wendi & Lisa Bublit
 Rebecca & Wesley Cohen
 Patty & David Dawson
 Nicole Facciuto & Eric Hargrove
 Kylie Giacalone-Colvin & Sierra Sutton-Putney
 Kathryn Greene & Simon Draper
 Gregory Goodman & Paul Langh
 Patty & Tanya Hancock
 Lisa Kelly & Marc Osborn
 Karen & Allan Kosup
 Deborah & James Nicholson
 Priya Jae & Jacob Sheppard
 Mr. & Mrs. Dennis Naiman
 Ron Rogowski & Karin Best

Bruce & Joyce Schoppe
 Marlene & Glen Schuberg
 Rebecca & Henry Tinsley
 Barrie Walsh & Edie John
 Carol Anne & Jonathan Werner
 Ellen & Justin Whittet
 Juliana Woodward & Brad Weals

INDIVIDUAL

Diana Boydston
 Thomas Edwards
 Pamela McDonough
 Frances Corcoran
 Alisa Freundlich
 Jeannine Glocker
 Irene Greene
 Ellen Hamilton
 Melissa Kelty
 Kay Kinsley
 Emily Musgrave
 Ms. Danette Ott
 Nancy Pearson
 Amy Slonaker

LOTUSLAND GARDEN SHOP

Locally Hand Crafted Finds

These fine pieces are hand crafted by local artists and are available in Lotusland's Garden Shop and online at lotuslandshop.org. Members save 10% on all purchases.

TOP LEFT: Lotusland exclusive rose gold lotus pod necklace 1" round with copper beaded chain. 32" long. \$160.00

TOP RIGHT: Sterling silver sun necklace with abalone center. 1.75" round with 18" sterling chain. \$110.00

BOTTOM LEFT: Beautiful ceramic pink lotus tealight holder. 6"X 3". \$12.00

BOTTOM RIGHT: Charming handmade stoneware prickly pear pad dish by artist Jim Sudal. 7"X5" \$45.00



GARDEN LOVER MEMBERS RENEWING OR INCREASING LEVEL OF SUPPORT

December 2017 and January, February 2018

GARDEN LOVER MEMBERS

STEWARD

Patricia & Larry Durham

GUARDIAN

Mr. Arthur R. Gaudi
Suzanne & Gilbert Mathews
Dennis McGowan & Rudie van Brussel
Mr. & Mrs. Gary Uwé Rollé
Jeffrey F. Romano & Stan A. Shayer
Hermine & Gary Gallup *

CONSERVATOR

Riley & Susie Bechtel
Suzie & Bruce Kovner
Michael MacElhenny & David Wine
Mr. & Mrs. Michael M. McCarthy
Mr. Eugene McCarthy & Ms. Jane Engelsiepen
Dr. & Mrs. Philip Wyatt

CULTIVATOR

Daniel Bifano & Allan Brostrom
Laura & John Bridley
Mary & Dick Compton
Mr. & Mrs. William M. Daugherty
Mr. & Mrs. Ian Fisher
Connie Frank & Evan Thompson
Ms. Jacquelyn Klein-Brown
& Mr. Michael Trambert
Belita Ong & J. Gordon Auchincloss
Mrs. Heidi Rex
Dr. & Mrs. Daniel Vapnek
Peggy P. Wiley & Wilson Quarré
Leslie Cane Schneiderman
& Mark Schneiderman *
Sheri Eckmann & William Klansek *

ADVOCATE

Ms. Patricia Aoyama & Mr. Chris Kleveland
Marta Babson *
Mr. Tom Benham
Lynn Cunningham Brown & Chris Brown

Joyce & Roland Bryan
Belle & Daniel Cohen
Scott Francis & Susan Gordon *
Bill & Barbara Gillette
Vicki & Bob Hazard
Lisa & Steve Hilton
Stuart & Hannelore Mabon
Mr. & Mrs. J.C. Massar
Denise Nelson
Susan & Jim Neuman
Ms. Nancy Parker & Mr. Eric Stull
Sandra Russell & Jim Foster
Mr. & Mrs. Warren Staley
Ms. Hillary Tentler
Olesya & John Thyne *
Nancy & John Vasi
Carol Vernon & Bob Turbin
Mr. Sherman Vincent & Lien Nguyen

* Denotes Increased Support



695 Ashley Road
Santa Barbara, CA 93108

Address Service Requested

Nonprofit Org.
U.S. POSTAGE
PAID
Santa Barbara
California
Permit No. 163

Spring 2018 Events

Many Lotusland events are open to non-members, so please let your friends and neighbors know about the great activities we offer.

Tuesday, April 10

**Focus Tour -
A Buzz in the
Insectary**

2:30 to 5:00 PM
Call Member Services
805.969.3767

Saturday, May 12

**Mother's Day Tea &
Tour**

1:30 to 4:00 PM
See page 15

Tuesday, May 15

**Focus Tour -
Curation of the
Collection**

2:30 to 5:00 PM
Call Member Services
805.969.3767

Now through May 19

Pavilion Exhibit

*Building a Botanical
Nirvana: The Story of
Lotusland*
See page 15

June 1 to July 21

Photography Exhibit

Darshan
See page 16

Saturday, June 9

**Summer Bounty
Dinner**

5:00 to 8:00 PM
See page 15

Thursday & Friday,

June 21, 22

**Members'
Appreciation BBQ**

4:00 to 7:00 PM
See page 9

Gardens in Paradise

April 26, May 31, June 23

sold out

Sept. 20, Oct. 20, Nov. 15

limited space

See page 16

Sunday, July 8

LotusFest!

2:00 to 6:00 PM
See page 16

Arrival Times for Members

AM Visit

Gate opens at 9:30
and closes at 10:00 AM.

PM Visit

Gate opens at 1:00
and closes at 1:30 PM.

Call 805.969.9990 for reservations.