



LOTUSLAND

NEWSLETTER FOR MEMBERS ▯ VOLUME 24 NO. 4 ▯ FALL 2015

The Sentinel of the Great Lawn

BY GWEN STAUFFER AND VIRGINIA HAYES

STANDING SENTINEL at the edge of the great lawn at Lotusland is a magnificent specimen of Monterey cypress (*Cupressus macrocarpa*) that has grown there for at least 130 years. Even though this majestic plant has become an iconic element of Lotusland's unique design, it was not purposely planted. R. Kinton Stevens, who developed the property beginning in 1883, was experimenting with many species of plants not native to the Santa Barbara region. As his son relates, "In connection with his nursery business, Father built two greenhouses that were heated during colder weather by a hot water pipe system and also a large lath house or shelter for those plants that were too delicate to be out in the hot sun. In this lath house was a cypress tree that, due to not being transplanted outside, had grown up to and through the lath roof of the shelter. We as youngsters used to play up in the heavy growth of the tree above the lath house roof line. The cypress tree that is now growing in Madame Walska's lawn is the same tree. The greenhouses and lath house have long since been removed." (Kinton B. Stevens, circa 1963.)

Monterey cypresses, as their name indicates, are native to the north and central coast of California. At present only two natural stands are known to exist in Monterey County—at Cypress Point and Point Lobos, on the north and south side of Carmel Bay, respectively—where they thrive in the cool temperatures and coastal fog zone of that region. Monterey cypress, with its broadly spreading crown, is the dominant species in the forest community that grows on those exposed seaward coastal bluffs. Despite canopy loss that can occur due to the extreme weather conditions, the Monterey cypress is a

Continued on page 2



PHOTOS BY BOB CRAIG

*The Sentinel of the great lawn, Monterey cypress (*Cupressus macrocarpa*), has been growing there for at least 130 years.*

IN THIS ISSUE

The Sentinel of the Great Lawn	1	Horticultural Happenings	10
Director's Letter	3	Mike Iven, Director of Grounds and Facilities, to Retire	11
LotusFest!	4	Lotusland Welcomes New Staff Members	11
Exceptional Plants: Lotusland Auction and Sale	5	Volunteer Profile: James Cunningham	12
Membership Corner <i>Holiday Gifts That Give</i>	5	Help Make Lotusland's Wishes Come True	12
Sexy Cycads!	5	Thank You to Our Garden Champion, Garden Stewards and Garden Guardians	12
An Endowment for the Lotus Garden Is Blooming!	6	Music in the Garden	13
<i>Always Room at the Top</i> by Ganna Walska	6	Summer Bounty	13
Lotusland Celebrates Passage to India	7		

The LOTUSLAND
NEWSLETTER FOR MEMBERS
is published by
Ganna Walska Lotusland
695 Ashley Road
Santa Barbara, California 93108
805.969.3767 • www.lotusland.org

BOARD OF TRUSTEES
Connie Percy, President
Crystal Wyatt, Vice-President
Ian M. Fisher, Secretary
Mick Thomas, Treasurer
Marc Appleton
Daniel Bifano
Andrew Chou
Belle Hahn Cohen
Geoffrey Crane
William M. Daugherty
Dawn Lafitte
Debby Longo
Suzanne Mathews
Eileen Rasmussen
Susanne Tobey
Peggy Wiley

Lifetime Honorary Trustees
Merryl Brown
Robert J. Emmons
Arthur R. Gaudi
Kisa Heyer
Anne Jones
Michael Towbes

Gwen Stauffer, M.S.
Executive Director

Anne Dewey, CFRE
Director of Development

Diane Figueroa, CPA
Director of Finance

Bob Craig
Director of Marketing

Virginia Hayes, M.A.
Curator

Michael Iven
Director of Grounds and Facilities

Dorothy Shaner
Director of Public Programs

Steven Timbrook, Ph.D.
Director Emeritus

Printed by Jano Graphics
Lindse Davis, Design

Mission Statement

We preserve and enhance the unique historic estate of Madame Ganna Walska, care for and improve its collections, and develop its conservation and horticulture programs, so they educate us, inspire us, and advance our understanding and appreciation of the importance of plants in our lives and in the life of the planet.



While the upper canopy is thinning, the lower branches are full of green leaves and can continue to photosynthesize.

Continued from page 1

resilient species that may attain more than 80 feet in height and an age of over 200 years. Capable of enduring wind and blasting of ocean salt spray, it also responds well to shelter and thrives under cultivation, although when grown in drier regions where Monterey cypress does not receive constant moisture, its life expectancy is much shorter.

The specimen of Monterey cypress at Lotusland is quite old, given its inland and southern site. It is also showing signs of failure. Even in the 1950s, arborists began to cable its heavy branches to reduce stress as they grew to larger proportions than might be expected on the wind-swept coastal bluffs of its native habitat. Even though it receives constant surveillance and frequent maintenance from Lotusland staff, the tree is steadily declining. Like any other living organism, our grand Monterey cypress has a life-span, and now it is coming close to reaching the end of its life.

Over several decades, the tree has had a number of limb failures and losses, made obvious by the stubbed branches and numerous cables we have installed to preserve the beautiful shape of the specimen and retain as many branches as possible. Even so, some of its branches are cracked and dying, and its massive trunk is hollow. More recently, we have observed its upper canopy thinning, each year producing fewer leaves as the tree weakens and loses the ability to draw water and nutrients to its highest reaches. The

tree's lower branches are full of green leaves, as the tree still has turgor pressure in the lower branches and can continue to photosynthesize.

For now, our arborist and work crew can safely access the entire canopy to inspect and maintain the tree, but at some point Lotusland's prized Monterey cypress will be a danger not only to visitors, but to the work crew as well. When that moment comes, it will be time to consider its removal. Even though the death of this tree will be just another example of nature's cycle of life, we also know it will be a sad, sad day.

Lotusland's Monterey cypress is the stately sentinel on our great lawn and losing it will be the ending of an era, so it is our intent to replace it. In fact, we have attempted to propagate the tree for years, hoping to replace this regal



The massive trunk is hollow and many of the branches are cracked and dying.



This beautiful tree dominates the landscape from many viewpoints, including this view from the blue garden.



Photograph from the 1920s showing the Monterey cypress on the great lawn prior to the addition of the pavilion.

LOTUSLAND ARCHIVES

conifer with its clone, but the cuttings simply will not root, indicating that the tree has little to no growth hormone left. Therefore, we are now beginning a search for the appropriate young Monterey cypress to replace our old

friend and become the great lawn's icon for future generations.

We cannot say when we will take down our Monterey cypress—the tree will tell us. But now we see signs that it could be within the next few to several

years. Before we do, we will reach out to the entire Santa Barbara community so that everyone can visit this magnificent and impressive being one more time and help us celebrate its life and presence in our special garden.

Director's Letter

AS STEWARDS of a garden that is over 130 years old, succession planning is one of our most vital strategies in fulfilling our mission to preserve Lotusland. The retirement of Mike Iven at the end of 2015 and the impending loss of our Monterey cypress are poignant reminders of the critical importance of planning for the future.

Lotusland's gardens have thrived under Mike's commitment to sustainable horticultural practices, and he leaves a legacy that will forever define Lotusland's gardening philosophy. Although Mike is genuinely irreplaceable, we are recruiting qualified candidates as Mike's successor, who will eventually create his or her own legacy for Lotusland.

Succession planning for the plant collections is also complicated. While all plants have a lifespan and eventually die—a natural process of deterioration with age called “senescence”—not all plants senesce at the same rate. Our Monterey cypress has survived for more than a century, while we have removed numerous other trees that finished their lives in much less time. Plants may also succumb, unexpectedly,

to other causes before their natural lifespan, such as physical damage by an external force (e.g. drought, lightning, wind) or an invasion by an insect pest or disease. For example, a stand of Monterey pines in the fern garden suddenly died due to their intolerance to our current severe drought.

The succession plan for Lotusland's tree canopy requires a 20- to 50-year view with a long-term strategy for the inevitable, while also incorporating quick-response preparation for the unexpected. Because every garden at Lotusland features a unique group of plants, we give each garden a specialized maintenance policy, including a tree canopy replacement plan.

The succession plan for our Monterey cypress is simple: the empty space left by the loss of that tree will be filled by a new specimen of the same species to replicate the current aesthetic. Sometimes the plan is more complicated, as in the bromeliad garden where the shade cast upon the sun-sensitive bromeliads by the old massive oaks is impossible to instantly replace. To plan for this, we planted young oaks in the



Gwen Stauffer

LEA ANNA DROWN

bromeliad garden that will eventually succeed the aging oaks, but, ironically, their growth is hindered by the shade they are meant to replace. Therefore, we have established tree ferns among the bromeliads to provide shade in the gaps of the aging canopy. Once the young oaks grow to become the mature shade canopy, we will remove the tree ferns, which are not original to Madame's design for that garden.

A garden, made of living organisms, is constantly changing. Please visit often and witness Lotusland's ongoing evolution.

Warm regards,
Gwen L. Stauffer

LotusFest!

*T*HE LOTUSES were putting on a spectacular display in the water and Japanese gardens for our annual LotusFest! celebration.

Members and guests enjoyed a beautiful afternoon sampling premium wines and beer from some of Santa Barbara County's finest purveyors. Sumptuous hors d'oeuvres by Omni Catering were enjoyed while mellow jazz performed by The Associates

added a wonderful ambience on the great lawn. Lotusland thanks these purveyors for making this sold-out event both a lot of fun and a tremendous success: Brander Vineyard, Carina Cellars, Daniel Gehrs Wines, Jaffurs Wine Cellars, Riverbench Winery, Santa Barbara Winery, Toucan Wines, Whitcraft Winery, Zaca Mesa Winery and beer from Figueroa Mountain brewery.



Lotusland Executive Director Gwen Stauffer and trustee Marc Appleton enjoy the festivities of the day.



LotusFest! affords visitors a rare opportunity to enjoy a very casual and leisurely afternoon on the great lawn.



A beautiful summer day sharing Lotusland with a friend makes this celebration a memorable occasion.



Brander Vineyard poured delicious selections that were very well received by all those at the event.



An afternoon of wine tasting at Lotusland creates a different way to experience the garden.



The water garden was full of lotus flowers and provided yet another perfect Lotusland photo op.



Making LotusFest! a traditional outing helps build a connection to both each other and the garden.



Josh Shelton, trumpeter for The Associates, entertains the crowd with a soulful jazz performance.

Exceptional Plants: Lotusland Auction and Sale

LOTUSLAND'S FOURTH plant auction and sale on September 19 was again a resounding success. Plant connoisseurs and collectors took home an abundance of rare, unusual and very special plants from both the silent auction tables and the spirited live auction. Jeff Chemnick served as the auctioneer and offered a lively commentary on the fascinating and striking features and lineage of each plant.

A lot of attention was focused on an *Encephalartos latifrons* X *woodii*, a one-of-a-kind hybrid created in the Lotusland nursery from our famous cycads. The final bidder paid \$2,300 for this rare



High bidder Sarmis Luters became the proud owner of an *Encephalartos latifrons* X *woodii*.

NELL CAMPBELL

the featured specialty cocktails, "Juanito Appleseed," made from Lotusland apples, figs, lime, sage and tequila, helped people adapt to the very warm day. A selection of wine, beer and sumptuous hors d'oeuvres perfectly complemented the festive atmosphere.

Thanks to all our sponsors: Dan Bifano, Mahri Kerley, Connie & John Percy, Eileen & Alex Rasmussen, Anitra Sheen, Gary & Susanne Tobey and Jim & Ellen Zissler for their generous support. We also appreciate and thank our generous donors and our guests who enthusiastically bid on all the auction items.



Executive Director Gwen Stauffer with a *Pedilanthus macrocarpus* "Loop the Loop" that sold in the spirited live auction.

and unique specimen. Other highly sought after plants on the silent auction tables that generated some feverish bidding included a *Tillandsia latifolia* v. *dicaricata* and a *Euphorbia* aff. *pseudocactus*. More than 140 items were auctioned, and the popular "buy it now" section allowed instant gratification with plants that were available for immediate sale throughout the afternoon. The incredible assortment of plants and plant people made for a fascinating and lovely afternoon. Among



Board Vice-President Crystal Wyatt, auctioneer Jeff Chemnick and Board President Connie Percy enjoy a moment in the shade of the bromeliad garden.

NELL CAMPBELL

Membership Corner

HOLIDAY GIFTS THAT GIVE

THIS HOLIDAY, give a gift that keeps giving all year long—share the awe and wonder of Lotusland with your loved ones!

When you purchase a gift, your donation goes to preserve and enhance Lotusland's historic botanical collection and to support education outreach. Members enjoy special benefits of self-guided Lotusland tours, exclusive events and free admission to the garden all year.

Receive six limited-edition notecards with each gift ordered by December 15!

Lotusland memberships are fully tax deductible within the limits of the law. To give or renew a gift, call Member Services at 805.969.3767.

Sexy Cycads!

A FOCUS TOUR OF LOTUSLAND'S CYCAD GARDEN FOR LOTUS KEEPER MEMBERS

THURSDAY, NOVEMBER 12 • 3:00 TO 5:00 PM

PLEASE JOIN Lotusland's cycad authorities, Research Associate Jeff Chemnick and Assistant Curator Paul Mills, for a rare opportunity to explore these amazing plants. Learn about the evolution of Lotusland's cycad garden and the coning process that initiates their reproductive cycle. Following this onsite garden presenta-

tion, enjoy light refreshments in the main house with Jeff and Paul. There will also be time for you to continue exploring the garden in the beautiful late afternoon light.

Space is limited to 30 attendees on a first-come basis.

Please RSVP to Bambi Leonard or Kelsy Wakefield at 805.969.3767.



Jeff Chemnick, Lotusland Research Associate



Paul Mills, Lotusland Assistant Curator

An Endowment for the Lotus Garden Is Blooming!

WE ARE VERY PLEASED to announce that Lotusland Trustee Belle Cohen and her family have begun an endowment for the lotus garden! Belle, with her husband Daniel, son Felix and soon-to-be-born daughter Colette, have a great affinity and love for Madame Walska's iconic lotus



Lotusland Trustee Belle Cohen with her husband Daniel and son Felix.

garden (commonly called the water garden). The Cohens started an endowment for the lotus garden in order to inspire others to join with them to ensure that this beautiful garden will be preserved in perpetuity.

Belle has the unique experience of practically growing up at Lotusland. Her mother, Thomasine Richards, introduced a very young Belle to the gardens, and she spent many summers with her father, Stephen Hahn, on Cold Springs Road and they came to Lotusland often. Belle became a trustee in 2014 and serves on the *Lotusland Celebrates* committee.

The original lotus garden was designed to be a swimming pool by Mrs. E. Palmer Gavit in the early 1920s with the help of the influential Santa Barbara landscape architect Peter Riedel (the estate was called Cuesta Linda). When Madame Walska purchased Cuesta Linda in 1941, she was inspired by the Asian lotus planted in the Japanese garden by former owner Ralph Kinton Stevens when it was Tanglewood. She was fascinated by the lotus, which has long been revered as a symbol of purity and spiritual transcendence by Hindus and Buddhists. In a letter to a friend in 1951 she wrote "...the monarch of all flowers, the unique lotus with its sacred

blossoms from which we derived the name of Lotusland for our estate." Madame Walska built a new swimming pool in the fern garden and converted the original swimming pool into a water garden in the early 1950s. She planted Victoria waterlilies in the pool during the summer with two huge fountains spraying water during the winter. The ponds on both sides of the pool contained colorful tropical and hardy waterlilies. During the 1980s, staff added lotus to the swimming pool, and they now bloom during the summer, creating a stunning and breathtaking display of rare white, pink and yellow blossoms.

Lotusland is profoundly grateful for Belle Cohen and her family's generous and visionary support of the lotus garden!

—Anne Dewey

LOTUS

How stainless it rises from its slimy bed. How modestly it reposes on the clear pool — an emblem of purity and truth. Symmetrically perfect, its subtile perfume is wafted far and wide, while there it rests in spotless state, something to be regarded reverently from a distance, and not to be profaned by familiar approach.

By Zhou Dunyi (Song Dynasty)

Always Room at the Top by Ganna Walska PREORDER NOW

ALIMITED-RUN SECOND EDITION of Ganna Walska's autobiography, *Always Room at the Top*, is at the printer now, and we are taking pre-orders for November deliveries. Order online at Lotuslandshop.org. Your credit card will be billed when the book is shipped.

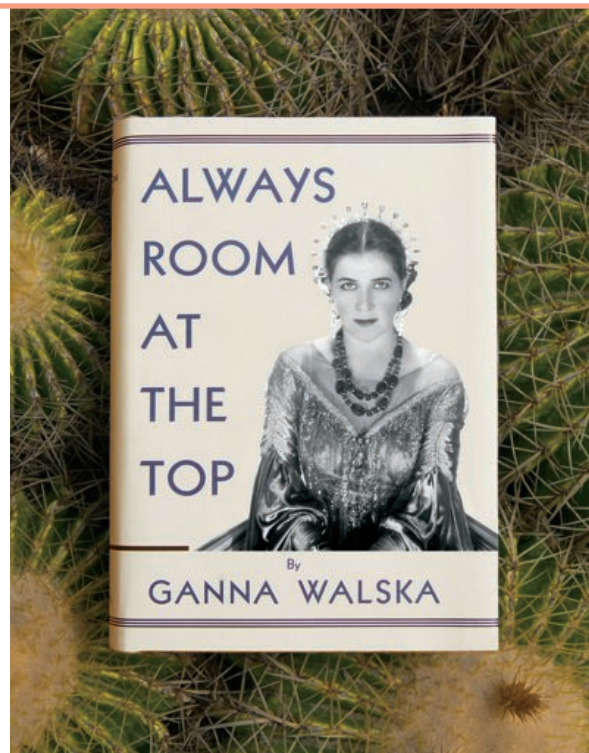
First published in 1943, this is the story of the life of an internationally known personality—a woman of beauty and wit, and a patroness of the arts whose activities have always been directed toward fostering the true and beautiful. Her patience and perseverance in endeavoring to create beauty, both in the material world and in the soul of humanity, are fully set forth in this book.

Through these pages pass the most famous personages of her time in the fields of music, art, politics, religion, statesmanship and philosophy.

Her story will be an inspiration to those who have been discouraged and disheartened in life.

It is an honest and revealing tale.

The price is \$35 (plus \$5 shipping); and remember, members save 10% using the code LLMember2015.



Lotusland Celebrates PASSAGE TO INDIA

ON JULY 26, 2015, Lotusland presented its 21st annual gala fundraiser *Lotusland Celebrates: Passage to India*. The 500 guests celebrated the rich and varied culture of India, a source of fascination and inspiration for Madame Ganna Walska, at this sold-out event in the gardens of Lotusland. The party was a marvelous success, the guests had a wonderful time and Lotusland raised much-needed funds to support the garden. *Passage to India* was the most successful fundraiser in Lotusland's history, grossing more than \$600,000!

Event Committee tri-chairs Jennie Grube, Caroline Thompson and Yasmine Zodeh, along with their clever and hard-working committee members—Nydia Cardot, Jill Chase, Belle Hahn Cohen, Lisa Couvillion, Anne Dewey, Renee Gignac, Tamara Jensen and I.D.O. Events, Dawn Lafitte, Jillian Muller, Eileen Rasmussen, Patrick Reynolds, Laura Shelburne, Daryl Stegall, Courtney Tentler, Kim Thomas, Rachel Wryan, Crystal Wyatt and Nancy Zacky—did an exceptional job of creating a uniquely enchanting event weaving the colors, textures and sounds of India into the beauty of Lotusland's tranquil gardens.

Guests were entranced as they followed the sensory path through the garden with beautiful surprises at every turn. A dazzling brass statue of Ganesha (on loan from JadeNow Gallery) greeted arriving guests, and a

colorful 350' flower petal pathway led the guests into the garden where the stillness of the Japanese garden was enhanced with the evocative vibrations of crystal bowls played by Shane Chunephisal; the aloe garden was overflowing with Indian temple incense; the pink lotus blooms filling the lotus pond were highlighted by classical Indian dancers portraying the love story between Radha and Krishna; the bromeliad garden was transformed into a "Bodhi Tree" or tree of enlightenment and hung with more than 1,000 colorful ribbons tied with small scrolls, each containing a quote or piece of wisdom; the theatre garden was alive with the voices of Kirtan chanting (call and response) led by Anne Van de Water; and the great lawn featured the sounds of the sitar played by Nasir Syed along with percussionist Miles Shrewsbury.

Duo Catering and Events created the delectable hors d'oeuvres and elegant seated dinner on the great lawn. Dinner was spectacularly interrupted by a surprise flash mob of 50 Bollywood dancers who surrounded the tables, led by teacher and choreographer Lisa Beck. To the guests' delight, Lotusland's Executive Director Gwen Stauffer jumped on stage to join the dance prior to providing introductions and opening remarks.

After dinner, guest auctioneer Eliza Osborne brought six one-of-a-kind items to the auction block, raising over \$100,000! Auction items included a private one-day yoga retreat for 12 at Lotusland with breakfast and lunch provided by Merci to Go; a striking acrylic-on-canvas painting, *First Bloom*, by local artist Susanna Vapnek; an intimate dinner in the garden for 10 with an incredible meal by Chef Ayda Robana and fascinating dinner conversation (plus spectacular wine pairing) from Rajat Parr; a set of three bronze-cast lotus pods by Los Angeles-based contemporary artist Zoe Crosher; a stunning gold and diamond "Lotus Root Bracelet" by NYC-based fine jeweler David Lee Holland; and a spectacular 10-day journey for six to visit the gardens of India led by Stefan Hermann.

Following the live auction, guests were honored to hear from Lotusland's



The amazing flower petal mosaic was the beginning of the pathway to the party.

Board President, Connie Percy, and Vice-President, Crystal Wyatt, about their passion for the gardens and their commitment to support the garden every day of the year. They asked the guests to join them in pledging a dollar a day to keep the garden beautiful until next year's event. They did a terrific job of sharing their enthusiasm for Lotusland, and the audience responded by donating more than \$40,000 to help support Madame Walska's priceless gift to our community.

As the sun began to set, guests departed through the Japanese garden with a gorgeous view of a fire dancer surrounded by candles floating in the pond, and a taste of chai tea finished the evening.

We appreciate the generous support of our presenting TAJ Sponsor LLWW Foundation; our Sponsors The Cohen Family, Larry & Patricia Durham, David Lee Holland, Duo Catering & Events, I.D.O. Events, Inc., Rich & Luci Janssen, Connie & John Percy and Lady Ridley-Tree; and our Sustainers Zoe Crosher, William & Alexandra Daugherty and Michael & Kimberly Thomas, Siddhi Ellinghoven & Stefan Hermann, Kyle Irwin & Jens Sorensen, The Kind World Foundation, John & Carole Lee, Lucifer Lighting, Jillian & Pete Muller, Eileen & Alex Rasmussen, Christopher J. Toomey, Dianne & Daniel Vapnek, Susanna Vapnek, and Lynda Weinman & Bruce Heavin, along with the many other donors who helped make this year's event a resounding success.

Continued on page 8



Our extraordinary Event Committee tri-chairs: Jennie Grube, Yasmine Zodeh and Caroline Thompson.



A surprise Bollywood Flash Mob descended on the astonished guests during dinner.



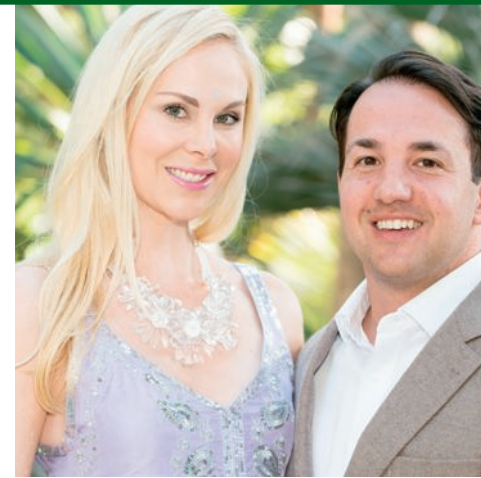
The Lotus Ganesha, on loan from JadeNow Gallery, was a favorite photo op.



Sara Miller McCune with Sustainers Bruce Heavin and past trustee Lynda Weinman.



Stefan Hermann, tour guide for the "Passage to Indian Gardens" auction item, and Siddhi Ellinghoven.



Kameron and Court Westcott enjoying the colorful festivities.



Stephen Schaible, winner of the "Bronzed Blossoms, Lotus Pods" auction item, with artist Zoe Crosher.

Continued from page 7

TAJ SPONSOR

LLWW Foundation

SPONSORS

The Cohen Family
Larry & Patricia Durham
David Lee Holland
duo Catering & Events
I.D.O. Events, Inc.
Rich & Luci Janssen
Connie & John Pearcy
Lady Ridley-Tree

SUSTAINERS

Zoe Crosher
William & Alexandra
Daugherty and Michael
& Kimberly Thomas
Stefan Hermann
& Siddhi Ellinghoven
Kyle Irwin & Jens Sorensen
The Kind World Foundation
John & Carole Lee
Lucifer Lighting
Jillian & Peter Muller
Eileen & Alex Rasmussen
Christopher J. Toomey
Dianne & Daniel Vapnek
Susanna Vapnek
Lynda Weinman
& Bruce Heavin

CONTRIBUTORS

Marc & Joanna Appleton
and Gary & Susanne Tobey
Jeff & Nydia Cardot

BENEFACTORS

ACT: Arcadia Studio
and Comstock Landscape
Architecture
The Ann Jackson Family
Foundation
Riley & Susie Bechtel
Cabana Home
Geoff & Kim Crane
Ian Fisher
Hutton Parker Foundation
Melinda & Robert Kemp
Dawn & David Lafitte
The Little One Foundation
Jim & Debby Longo
Montecito Bank & Trust
Northern Trust
Michael & Patty Rosenfeld
Judy & Edward Shea
Hania P. Tallmadge
Anne & Michael Towbes
Randall & Taylor Van Wolfswinkel
The Wyatt & Babich Families
Sam & Yasmine Zodeh

PATRONS

Demetri Argyropoulos
Robert & Alisa Baur

The Bentson Kauth Family
Daniel Bifano & Allan Brostrom
Tom & Krista Blake
Nigel & Connie Buxton
Andrea & Juliana Cairone
Jill & Chad Chase
Satie Airamé & Jeff Chemnick
Nelson Coates & Ruben Flores
Jane Copelan & Dorothy Shaner
Curt & Sallie Coughlin
Steve & Lisa Couvillion
Oswald J. Da Ros
& Christine Neuhauser
Bill & Anne Dewey
Bruce & Regina Drucker
Harry Felder
Ted & Coleen Friedel
Rosalind Gies-Amorteguy
Nancy Gifford
Anna Gillespie
Dr. & Mrs. Brett Grube
Anna Hahn & Vinny Jain
Joanne C. Holderman
Cyndee Howard
& Lesley Cunningham
HUB International Insurance
Services
Ted & Barbara Jakubanis
David & Judy Jones
Harry & Karen Kolb
Robert & Gretchen Lief
Siri & Bob Marshall
Kenneth A. McAshan

Martin & Maureen McDermut
Mr. & Mrs. William Nicholson
Lizzie & Brent Peus
Wilson Quarré & Peggy Wiley
David Reichert
& Diane Dodds-Reichert
Eileen & Charles Read
Jeffrey F. Romano & Stan A. Shayer
Bill & Sally Russ
Stephen Schaible & Daron Builta
Elisabeth R. Schreiber, Deutche
Asset & Wealth Management
Laura & Craig Shelburne
Ed & Lin Snider
Roxanna & Randy Solakian
Gwen Stauffer & Mark Taylor
Daryl & John Stegall
Jacqueline J. Stevens
Katherine & Matthew Stewart
Linda & Dennis Sullivan
Suzanne Tucker
& Timothy F. Marks
John Van Donge
Hubert & Susie Vos
Nick & Patty Weber
The Westcott Foundation/Court
& Kameron Westcott
Jane Woodcock
Mark & Rachel Wryan
Carolyn & Philip Wyatt
Milton & Deann Zampelli
Anonymous

AUCTION PURCHASERS

Belle & Daniel Cohen
Michael & Maryam Mohseni
Lady Ridley-Tree
Michael & Patty Rosenfeld
Stephen Schiabile & Daron Builta
Lynda Weinman & Bruce Heavin
and Sara Miller McCune

UNDERWRITERS

"For Alexandria"
Daniel Bifano & Allan Brostrom
Jeff & Nydia Cardot
Lynn & Andy Chou
Belle & Daniel Cohen
Dr. & Mrs. Brett Grube
Yasmine Mohseni
Jillian & Peter Muller
Neal Feay Company
Connie & John Pearcy
"For Roselyn"
Gary & Susanne Tobey
Trillium Enterprises, Inc.
Crystal & Clifford Wyatt

GENERAL & IN-KIND DONORS

AATMA
Alchemy Wellness Spa & Café
Lisa Beck
Robert & Sally Beckham
in honor of Ian Fisher

Chevron Humankind/Jeffrey J.
Romano & Stan A. Shayer
Classic Party Rentals
Belle & Daniel Cohen
Deanna & Jim GP Dehlsen
in honor of Lady Ridley-Tree
Hazelwood Allied
Moving & Storage
JadeNow Gallery
Greg & Elisabeth Fowler
Rita & Henry Hortenstine
in honor of Connie Pearcy
Annie & Andy Kaiser
La Tavola Linen
Leslie Logsdon & Duncan Bourne
Om Sweet Mama
Merci To Go
Eliza Osborne
Rajat Parr
Rose Story Farm
Signature Parking
SMI Concepts, Inc.
Anne Van de Water
Pam & Terry Valeski
Yasmine Mohseni
& Sam Zodeh

DONORS SUPPORTING A DOLLAR A DAY

Geoffrey Anenberg
Marc & Joanna Appleton

Monica & Tim Babich
in honor of Pamela Hope Jones
Brendan & Helen Bechtel
Riley & Susie Bechtel
in honor of Marc Appleton
& Joanna Kerns
Hiroko Benko
Dennis & Wendy Carlton
in honor of Patricia Carlton
Chad & Haley Carty
Jill & Chad Chase
Susan R. Cronin
Beth DeWoody & Firooz Zahedi
Patrick & Sally Enthoven
Ruben R. Flores, VisionScape
Renee Gignac
Robert & Sherry Gilson
Caroline Grange
in honor of Anne Dewey
Deborah Groening
in memory of Douglas Adams
Mike Healy & Tim Walsh
in honor of Eileen & Alex Rasmussen
Stefan & Irina Hearst
in honor of Lynda Weinman
Kyle Irwin & Jens Sorensen
Jacquelyn Klein-Brown
& Michael Trambert
in honor of Eileen & Alex Rasmussen
Travis & Tom Kranz
John & Carole Lee
Windy Litvak

Jim & Debby Longo
Brett H. Matthews
& Ginger Salazar
Donivee & Merrill Nash
Bob & Alexandra Nourse
John & Connie Pearcy
Sammy & Michael Pineau
Cecelia Ramos & Alex Miller
Eileen Rasmussen
in honor of Alex the Husband
John & Tracy Ronca
Sally & Bill Russ
Jeremy & Karina Schweitzer
Patricia Sheppard & Ernie Witham
Chuck & Stephanie Slosser
Gwen Stauffer & Mark Taylor
Paula & Shawn Stussy
Selby & Diane Sullivan
Fife & Marci Symington
in honor of Jeff & Nydia Cardot
Gary & Susanne Tobey
Todd & Michele Voigt
Nancy & Tony Wall
in honor of Eileen & Alex Rasmussen
Travis & Maritza Wilson
in honor of Ian Fisher
Marc & Meryl Winnikoff
Bob & Karina Woolley
in honor of Connie & John Pearcy
Crystal & Clifford Wyatt
Nancy Zacky
in honor of Karen Newman Krueger



Event Committee members Jennie Grube, Lisa Couvillion, Kim Thomas, and Crystal Wyatt.



Sponsors Connie and John Pearcy with Peggy Wiley and Wilson Quarré. Connie is the Board President and Peggy is a trustee.



Patrons Nigel and Connie Buxton looking enchanted with Jane Woodcock and Mike Hillberry, who are also Patrons.



Event Committee member Rachel Wryan with husband Mark Wryan, Judith Ner and Juliana Cairone.



Benefactors Crystal and Cliff Wyatt with Benefactors Tim and Monica Babich. Crystal is the Board Vice-President.

Horticultural Happenings

PLANT HEALTH CARE INTERNSHIP

CAMERON GARDNER HANNAH-BICK was this year's summer intern. Cameron graduated from the UCSB School of Creative Studies. She was the recipient of the Vernon I. Cheadle Alumni award, an award for a student who demonstrates a passion for research or creative activities in plant science, ecology, restoration and conservation, environmental management and/or science education. Lotusland has had several good interns from UCSB, and Cameron continued the tradition. As an artist, Cameron brought a creative approach to all her duties. The horticultural skills and practices she learned ran the gamut from pest management to compost tea production. Cameron excelled in several areas, but her work with the roses and in the nursery stood out strongly. She maintained the nursery while Paul Mills attended a conference in Colombia. She also has developed a keen eye for the evolutionary traits of plants. Every intern comes to Lotusland to learn sustainable horticulture, but often it's the intern with innovative ideas who teach us how to approach our work from a different perspective.

Thank you Cameron. We wish you good luck and great success in all your future endeavors. —Corey Welles

THE RESIDENT Plant Health Care Internship is offered to students enrolled or recently graduated from an accredited college-level horticultural/botanical program. The 10–12 week long program allows the student to learn the principles of Lotusland's grounds maintenance

program and experience the day-to-day practices of a constantly evolving plant health care program. Having begun before public tours of Lotusland started, the PHC Internship is Lotusland's oldest and longest-running public program, and we are extremely grateful to the John Percival and Mary C. Jefferson Endowment Fund and Mr. Arthur Gaudi, Trustee, for their generous support of this valuable educational program. —Mike Iven

DEALING WITH A DROUGHT AND PLANNING FOR A FLOOD

IT'S EARLY SEPTEMBER. The temperature is in the 90s. The great lawn is dead. The water table continues to drop, making the well pump less efficient, and it's difficult to keep up with water demands throughout the garden. The grounds staff uses portable drip irrigation systems and soaker hoses to water selected trees and shrubs. Trees and hedges that never, or at least rarely, required supplemental water wait in line for their date with a portable drip line. During 2015, manual drip irrigation systems were added to many areas of the garden that were previously watered with overhead sprinklers. Shrub spray heads on automatic irrigation systems have been replaced with more water-efficient rotary sprayers. Watering times have been cut back. We've always been conscientious about our irrigation practices, but the drought forced us to think about doing more by prioritizing water use and considering every drop.

Today's forecast has El Niño on track to become one of the most powerful on record, strongly suggesting California could face heavy rainfall this winter. While we welcome the recharging of the groundwater basin and replenishing lakes and reservoirs, we remember previous El Niño events that caused major damage here at Lotusland. For example, the basement of the main house flooded with 5 feet of water, and a river of water from Cold Springs Road broke through a berm and coursed diagonally through the garden to the corner at Ashley Road, where it blew out the stucco wall onto Sycamore Canyon Road. Since the last



Eoin Hammonds, Lotusland staff gardener for nine years, watering in the cypress allée.

El Niño, property-wide drainage has been greatly improved. Runoff is now directed to curbed utility roads and into a storm culvert.

Facilities and grounds staff have begun the usual pre-winter preparations with a heightened sense of duty. Gutters, drains and culverts will be inspected and cleared regularly. Sandbags and straw wattle will be in place before any storms hit, and a back-up supply of erosion control products will be handy. Submersible utility pumps are being tested and others will be on hand as needed. Mulching is ongoing in the garden, and an erosion-control seed blend will soon be planted in the backfield. A few asphalt road and curb repairs will be completed.

If the storms are as heavy as predicted, there will be some damage in the garden. Ruts in pathways are inevitable. Heavy rain followed by strong winds is a nasty combination, and susceptible plants may topple over. With staking materials and the right equipment on hand, we've been able to upright and save many plants over the years. We hope we don't have to do that, but we are prepared.

EOIN HAMMONDS

EOIN HAMMONDS, Lotusland staff gardener, recently accepted a position with a local landscape contractor. Eoin worked at Lotusland for nine years. His responsibilities over time included the fern, butterfly, blue, Australian and cactus gardens, as well as the water stairs and cypress allée. Prior to working for Lotusland, Eoin worked for a local irrigation supply company. His experience will serve him well in his new position. We will miss Eoin, and we wish him all the best.



Summer intern Cameron Gardner Hannah-Bick with Corey Welles, Lotusland Plant Health Coordinator.

Mike Iven, Director of Grounds and Facilities, to Retire

No occupation is so delightful to me as the culture of the earth, and no culture comparable to that of the garden.

—Thomas Jefferson

SINCE OCTOBER 1984, Mike Iven has called Lotusland both his home and his office, and using the garden as a yardstick, his 31-year career is nothing less than a monumental success story. Mike and his wife Roberta Bloom have poured their hearts

and souls into Lotusland, and everyone here is extremely grateful for their incredible contributions and will be saddened by their departure. On Lotusland and all its glory, Mike offered what may be the understatement of the decade when, true to his character, he said he's "really happy with the way things worked out."

(See Lotusland Newsletter Winter 2015 for more information on Mike's career; also at lotusland.org.)



Mike Iven and his wife, Roberta Bloom.

NELL CAMPBELL

Lotusland Welcomes New Staff Members

WHEN GUESTS ENTER on Cold Springs Road, their first impressions are those of the warm greeting provided by Susan Mietus or Sharon Barnett, the gate managers of Lotusland. Posted in the kiosk, they are responsible for greeting and assisting guests while managing the traffic flow into the garden. They work closely with the docents to coordinate tours and negotiate the daily challenges that often require quick thinking and a warm smile. Sharon joined us as part of the docent class of 2014, and Susan joined us shortly thereafter. First impressions are an important part of the visitor's experience, and Susan and Sharon are certain to create a wonderful

beginning as our guests embark on their journeys through Lotusland.

Patrick Reynolds came on board in January of 2015 to assist with our busy and prestigious events staff. His vast experience in the restaurant industry, award-winning mixology skills and positive nature make him an invaluable member of the team. We would also like to welcome Kelsy Wakefield to our membership department. Kelsy works with new and existing members to ensure that Lotusland always exceeds their expectations, and she performs these roles with the skill and knowledge of a seasoned expert.

Lotusland is extremely fortunate to have these talented individuals as part



Patrick Reynolds

of our team. We are very appreciative and proud of all the people who work and volunteer at Lotusland as they demonstrate a level of commitment, dedication and initiative that helps to make Lotusland truly exceptional.



Sharon Barnett



Susan Mietus



Kelsy Wakefield



James Cunningham

*J*OY. PEACE. EXCITEMENT. Challenge. These are James' words to describe his emotions while volunteering at Lotusland.

James called NYC, San Francisco and LA home before permanently moving to Montecito in 2011. His acting and modeling career spans over 30 years and you may recognize him from movies, TV shows and commer-

cials. Like many of our docents, he first became a member and then he joined the docent training class of 2013.

In addition to leading regular tours (sometimes in Spanish), James is committed to leading Fourth Grade Outreach groups. He says he enjoys each and every garden in Lotusland—one area is his favorite until he walks into the next, noticing for the first time an intriguing plant or becoming more aware of the changes in light, weather or the mood of the landscape. Some of James' favorite times have been on rainy, misty days when the gardens take on a surreal, mystical mood.

Initially, James became a docent for selfish reasons to learn more about plants and sustainable horticulture practices. Throughout docent training, he found himself immersed in a captivating new world, and he discovered an enthusiasm and talent for sharing his knowledge of the gardens with visitors.

Volunteer Profile: James Cunningham

James is very active in our community. He is on the Board of Directors of Explore Ecology, the umbrella organization of Art From Scrap. He is a part of Earth Day, the Watershed Resource Center at Arroyo Burro Beach and School Gardens Project managing 34 gardens in Santa Barbara schools. James is very proud to be one of the leaders in this, the largest non-profit environmental education organization in Santa Barbara.

Plants, flowers and nature are part of his family's culture, and Lotusland helps create a wonderful connection to all those things. James and his three brothers have a lovely 99-year-old mother who recently visited the garden to experience the beauty and meet his fellow volunteers and staff members. James describes Lotusland as a powerful example of what can be achieved when creativity, knowledge and respect of nature are combined. —Kitty Thomassin

Help Make Lotusland's Wishes Come True

WATER GARDEN POTS

Reproduction of the original antique rolled rim pots in the water garden by renowned Italian artisans. Two at \$1500 each.



GARDEN STAFF MANAGEMENT

An iPad2 with Wi-Fi and cellular service to use for garden staff management to keep current with communications while in the garden. The price is \$729.



*T*O DONATE FUNDS for these items, please call Anne Dewey, Lotusland's Director of Development, at 805.969.3767, ext. 105, or email her at adewey@lotusland.org. Thank you so much to our incredible members who have helped us with our Wish List items—it makes such a big difference in our day-to-day operations, and we are very grateful.

Thank You to Our

GARDEN CHAMPION

Lady Ridley-Tree

GARDEN STEWARDS

Mr. & Mrs. Larry Durham
Ted & Coleen Friedel
Mercedes Millington & Jack Mithun
Michael & Patty Rosenfeld
Schroeder & Verik Families
Lynda Weinman & Bruce Heavin

GARDEN GUARDIANS

Patricia P. Broome
Cyndee Howard & Lesley Cunningham
Suzanne & Gilbert Mathews
Mr. & Mrs. John K. Percy
Sammy & Michael Pineau
Mr. & Mrs. Gary Uwé Rollé
Jeffrey F. Romano & Stan A. Shayer
Mrs. Anitra P. Sheen
Fred & Stephanie Shuman
Gary & Susanne Tobey
Mr. Christopher J. Toomey



The afternoon light filtering through the upper bromeliad garden provided a brilliant light show for a truly superb performance.

Music in the Garden

ON SATURDAY, AUGUST 22, more than 100 members and guests gathered on Lotusland's great lawn for an amazing special performance by the New West Guitar Group, with acclaimed vocalist Sara Gazarek.

The vibrant acoustic rhythms and superb vocal performance were further highlighted by the magical landscape of Lotusland. These incredibly talented musicians delivered a perfect early evening performance that complemented the lush garden surroundings bathed in

the long shadows of the late summer sun. Everyone enjoyed this unique opportunity to picnic on the lawn and sip their favorite libation while experiencing Music in the Garden.

A BIG THANK YOU TO OUR EVENT SPONSORS! Trumpet Level: Connie and John Percy, Nancy B. Schlosser in Honor of William Schlosser; Drum Level: Michael and Nancy Gifford; Guitar Level: Rich and Luci Janssen, Kate Schepanovich; Food Sponsor: Whole Foods.

Summer Bounty A LOTUSLAND FOOD & WINE FÊTE

LOTUS KEEPER MEMBERS enjoyed a farm style feast expertly paired with cellar select wines on a gorgeous summer evening in the truly Gatsbyesque setting of the great lawn at Lotusland. Legendary winemaker Ken Volk of Kenneth Volk Vineyards shared his passion and expertise for perfectly pairing wines to harmonize with the evening's sumptuous menu. This year's guest chef, Avery Hardin of Scarlett Begonia, prepared an innovative five-course meal that was a foodies' delight: evocative, satisfying and quite delicious.

To find out more about these exclusive *Lotus Keeper* garden events including receptions, dinners, focus tours and more unique Lotusland opportunities and benefits, call Member Services at 805.969.3767, extension 120 or 115.



Legendary winemaker Ken Volk of Kenneth Volk Vineyards created the wine pairings for this magical event. His knowledge, demeanor and wit delighted guests almost as much as his wine selections.

PATRICK REYNOLDS

Members Who Have Increased Their Level of Support JUNE, JULY AND AUGUST 2015

LOTUS KEEPERS GUARDIAN

Mr. Christopher J. Toomey

CONSERVATOR

Melinda Goodman-Kemp & Robert Kemp
Stephen P. Schaible & Daron S. Builta

CULTIVATOR

Priscilla & Jason Gaines
Nancy & Michael Gifford
Mrs. Carole MacElhenny
Mr. & Mrs. J.C. Massar
Eileen & Charles Read
Michael & Kim Thomas

ADVOCATE

Dr. Renee Harwick
Natalya Pavchinskaya

Alexandra & Jeffrey Pfeifer
Christine & Gregory Thorpe
April N. Walstad

GENERAL MEMBERSHIPS FRIEND

Erica & Emma Ausman
Chris & Lisa Cullen
Julia Emerson & Ellie Maldonado
Michael & Antonie Heren
Jim & Chana Jackson
Mr. Dennis J. Jurcak
Esther Lam & Christopher Parkes
Kristi Lupoli
Susan Matsumoto & Mel Kennedy
Amanda & Richard Payatt
Mr. Mark Smith
Ms. Alison Zuber Mr. Andy Cohen

FAMILY

Roger & Renee Blonder
Lois Burwell & John Toll
Kristine & Rey Castillo,
Village Modern Foods
Inken Gerlach & Charles Rudd
Mrs. Rosalind Gies-Amorteguy
Houston & Anne Harte
Mrs. Paul M. Jarchow
Holly McConnaughey
Sue Moran Thole & Paul Thole
Steven Rulo & Thomas Patrick
Ms. Judy Sahn
Adrian Smith & Ryan Camou
Jan Stewart
Mrs. Constance Wilson
& Mr. Drew Kels

Lotusland Members

WE WELCOME NEW MEMBERS WHO JOINED IN JUNE, JULY AND AUGUST 2015

LOTUS KEEPERS

CONSERVATOR

David Lee Holland & Yanni Kyriazis

CULTIVATOR

Tamara Jensen I.D.O. Events, Inc.

ADVOCATE

Cathey Cadieux
Ms. Lucy Doheny
duo Catering & Events
Amy Gordon
Amy Holbrook
Ms. Judith Petraitis
Dina & David Saalisi
Susanna Vapnek & Angela Arias
Andrew Vonnegut & Kim Kotnik,
Delta Welding & Fabrication
Ms. Victoria Ward
Susan Boettner, Stensland Design
Brian & Victoria Cogdon
Zoe Crosher
Dani & Bill Hahn, Rose Story Farm
Stefan Hermann & Siddhi Ellinghoven
Garrick & Pam Lewis, SMI Concepts
Eliza Osborne
Sarah & Moses Romo
Jeff Spangler, JadeNow Gallery
Ashley & Mandy Transki
Anonymous

GENERAL MEMBERSHIPS

FRIEND

Joy Brown & Laura A. Ceppi
Ms. Morgan Brutocao
Gary & Cathy Carpenter
Roberta & Matthew Collier
Mary Pat Fitzgerald
Ms. Cindy Heller
Mr. Kurt Huffman & Mrs. Pamela Stafford
Mr. & Mrs. Stephen Kally
Kevin & Lana Kidd
Sacco Nazloomian & Jillian McDonald
Zachary Schriock & Matthew Schriock
Dr. Michael Steinfeld
& Dr. Beverly Steinfeld

FAMILY

Trudy Adair-Verbais & Jake Jacobson
Armie & John Albertine
Amanda Allen
Melody Amaral & Jay Anderson
Teri & Roy Ang
Chris & Jenn Arreguin
Robert Bakkemo
Lisa & Bob Balch
Mark & Rachel Barbagelata,
Thalia Jewelry
Mr. & Mrs. Jerald Barker
Marianne Battistone & Philip W. Norwood
Barry & Linda Baum
David & Candace Bernstein
Yuet & Mark Berry
DeLeys & Craig Brandman
Leslie Brickell
Janelle & Joshua Caballero
Ann-Marie Cepkauskas & Clifford Roxton
Maria & Frank Ciaravalli
Jennifer Claypoole & Jerry Chafkin
Michael Cohen
Christina Criswell & John Gilbert
Joanne & Charles Day
Zoë & Oliver DeGivenchy
Carole & John Donati

Barry Dorsey
Twila & Scott Douglas
Debbie & Ted Drake
Ms. Karen Earp
Selden & Judith Edner
Fernando & Farah Fernandez
Mr. & Mrs. Ian FitzGerald
Bob & Suzanne Flaherty
Kim Foster & Kay Muri
Ed Galsterer
Janet Gander Guy & Elliot Chang
Lucia Garcia-Fernandez & Justin Bellante
Amy & Kyle Gates
Gerlinda & David Gautrey
David Gibbs & Colleen Lehman
Kevin & Eileen Goodwin
Casey Graves
Mr. & Mrs. John M. Grether
Jay Hall
Sadie & Eric Hall
Bob & Gail Hansen
William & Donna Hines
Steven Hirsch & Wendy Power
Jessica Hokanson & Erin Brown
Mary Howard & Diane Howard
Paul Hoyle
Neil & Johanna Israel
Ms. Kathy Janega-Dykes
Hazel Johns
Dr. & Mrs. Brian Johnson
Pamela Johnson & Thomas Bonvenuto
Marian Kadota & Rob Faith
Ann Kale & Bob Kupiec
Gail & Brian Kenney
Fredrick & Angelina Kleinbub
Vadim & Julia Kotlyar
Svetlana Kravtsova
Matthew La Vine
Tom & Diana Lackner
Carl Lasner & Diana DiOrio Lasner
Danielle Lehman & Ethan Schachter
Betty Lieberknecht & Joseph Dubs
Joan & Bruce Mathews
Morgen McLaughlin
Daila & Richard Melendez
Golda & Chad Messer
Michael Morgan
Kay Morter
Rich Nahas
Mr. Christopher & Dr. Victoria Niklas
Renee Papadopoulos
Ryan Parker
Tom Patton
Tai Pham & Phi-Hong Tran
Bradford & Lori Pollack
Wilma Regopoulos & Vilma Regopoulos
Heather & Todd Ridenour
Janice & Michael Ristow
Colleen Rydjord & Rick Decent
Dara Sae-Tang & Kevin Tanaka
Janet Safonov
Dana & Jeffrey Sager
Judy & Ed Savage
Patti Schrader & Julio Alvarez
Kenneth & Carolina Simon
Karen Soto-White & Dan Spear
Ms. Theodora Stephen,
Sabra Stevens & Dennis Harding
Joyce Stickney & Paul Brady
Brent Sumner
Blaine & Erin Taylor
Tyler Tomblin
Jim & Sigrid Twomey

Katherine Valentin & Ram Foulger
Winfred Van Wingerden
& Sheila Batson
Pamela Webber
Helena & Timothy Wong
Nita & Drew Wright
Richard Yates
Angela Yokota
Karen & Michael Zacha

INDIVIDUAL

Galina Aroutiounova
Robin Beers
Dr. Lynne Bell
Ms. Gwat Bhattacharjie
Annelise Blair
Kyle Boone
Jennifer Cody
Kathy Coldiron
Pam Cwiklo
Kathryn Damiano
Ms. Gwendolyn Doann
Ken Doud
Jeana Dressel
Robbi Fernandez
Mr. Kevin Fukagama
Jami Gott
Sarah Hanna
Carol Harding-Brown
Brad Hill
Arthur Hugon
Susan Hynes
Mr. Frank Jaworski
Kerry Johnson
L. Robert Johnson
Ian Justus
Ms. Sharon Kelley
Echo Li
Ziyang Liu
Doug Lunn
John Macunovich
Inannya Magick
Susan Magness
Lisa Skyheart Marshall
Jemi Reis McDonald
Mrs. Denise Melas
Colin Melendez
Susan Menchen
Conner Mae Mertz
Melissa Mimms
Dr. Clara Mora, D.D.S.
Frances O'Sullivan, M.D.
Morgan Peyton
Lars & Colleen Poulsen
Suzan Marie Rada
Ann Ratliff
Douglas Ratliff
Sam Ratliff
Loretta Redd
Ines E. Roberts
Celeste Rue
Devon Schneider
Janice Schuerman
Nicki Smith
Karen Taggart
Jill Tannenbaum
Vince Tessitore, B2B Printing
Yvonne Trainor
Helena Vazquez
Tracey Walters
Lesley Wiscomb
Kate Wren

Lotusland Gratefully Acknowledges Donations

JUNE, JULY AND AUGUST 2015

THE LOTUS SOCIETY

NEW MEMBERS

Deborah & Douglas Hild
Paul & Jane Orfalea

GRANTS

The Ann Jackson Family Foundation
Coeta and Donald Barker Foundation
The Kind World Foundation
Mr. & Mrs. John K. Percy
Annette Simmons
Venoco Community Partnership

MATCHING GIFT PROGRAMS

2014 GIFTS FOR THE GARDEN

GENERAL FUND

The Disney Employee Matching Gifts
directed by Julie Bush

MEMBERSHIP

IBM Corporation Matching Grants Program
directed by Philip Pollastrino

LOTUSLAND INSECTARIES

Suzanne & Gilbert Mathews

SUMMER BOUNTY DINNER

WINE DONOR

Kenneth Volk Vineyards with Ken Volk

MUSIC IN THE GARDEN

TRUMPET SPONSOR

Mr. & Mrs. John K. Percy
Nancy B. Schlosser
in honor of William Schlosser

DRUM SPONSOR

Nancy & Michael Gifford

GUITAR SPONSOR

Richard & Lucille Janssen
Kate Schepanovich

JAPANESE GARDEN RENOVATION

Mr. & Mrs. Marc Appleton
Daniel Bifano & Allan Brostrom
Gwen L. Stauffer & Mark V. Taylor

IN HONOR OF HARLIS MAGGARD'S BIRTHDAY

DIRECTED TO LOTUSLAND INSECTARIES

Anne Dewey
Mr. Frank Fragosa
Karen & Nino Garrolini
Janis & Reyes Gonzalez
Ms. Marian Jean
Mary Ellen & Richard Macias
Ms. Lori Kraft Meschler
Mrs. Jean K. Parry
Dorothy Shaner
Kurt Speicher

LOTUSLAND TRUSTEES SUPPORT STAFF APPRECIATION PARTY

Daniel Bifano
Marc Appleton
Andrew Chou
Belle Hahn Cohen
William M. Daugherty

Debby Longo
Connie Percy
Eileen Rasmussen
Michael "Mick" Thomas
Susanne Tobey
Peggy P. Wiley
Crystal Wyatt

GENERAL DONATIONS

Amazon Smile Foundation
Joy Brown & Laura A. Ceppi
Mr. & Mrs. Jim Crowninshield
in appreciation of Paul Mills & Virginia Hayes
Kevyn DeRegt
Paula Farrell-Foutz
Cid Frank
Stephanie & Ken Grody
in appreciation of Peggy Wiley & Ruben Flores
Professor Zlatko Janeba
Golda & Chad Messer
Ellen & Robert Raede
in appreciation of Crystal Wyatt
Douglas Ratliff
Lady Ridley-Tree
Ms. Sandra Stauffer
Ms. Sue Swartz
Norbert Tan
in appreciation of Gwen Stauffer
Mrs. Paul M. Jarchow
for 4th Grade Outreach program
Peggy P. Wiley
in memory of Lynn Matteson
Diana Wold & Donald Marszalek
Anonymous
in appreciation of Kathy Hulick

GIFT MEMBERSHIP DONORS

Patricia P. Broome
Melinda Casey
Kathryn Damiano
Inken Gerlach & Charles Rudd

Bob & Gail Hansen
Patty & Gary Hill
Ms. Julie E. Irwin
Ms. Amanda Johnson
Susan Lushing
Patricia Maddox
Mr. Harlis Maggard
Dennis & Cynthia Manos
Kathy Mora
Dr. Clara Mora, D.D.S.
Robert & Sharon Novell
Ted Plute & Larry Falxa
Lars & Colleen Poulsen
Douglas Ratliff
Gilbert Roberts
Judy Robertson
Jackie & Greg Safonov
Marilyn Sue Stabile
Jill Tannenbaum

WISH LIST DONORS

THREE NEW WHEELCHAIRS

Judy Cardinal
in memory of Jim Cardinal
Mr. Gordon Durenberger
in memory of Mary Jo Durenberger
Bobbie Offen
in honor of Gertrude Gluckman
on the 100th anniversary of her birth
Lynne Scott

IN-KIND DONOR

Robin Bisio
for unlimited use of FLOCK artwork
and film "Aigreet"
Crystal Wyatt

PLANT DONORS

Marc Appleton
David Brigante, Hughes Water Gardens
Ron Caird

Renewing Lotus Keeper Members

JUNE, JULY AND AUGUST 2015

STEWARD

Ted & Coleen Friedel

GUARDIAN

Cyndee Howard & Lesley Cunningham

CONSERVATOR

Mr. & Mrs. Marc Appleton
Riley & Susie Bechtel
Ms. Perri Harcourt
Dr. & Mrs. Philip Wyatt

CULTIVATOR

Diane Dodds-Reichert & David Reichert
Dr. & Mrs. Robert J. Emmons
Anna Gillespie
Mr. & Mrs. Robert Gilson
Kyle Irwin & Jens Sorensen
Mr. & Mrs. Phil R. Jackson
Gwen L. Stauffer & Mark V. Taylor
Christie William
Ms. Diana Wold & Mr. Donald Marszalek

ADVOCATE

Mr. & Mrs. Peter Adams
Mr. Tom Benham
Ms. Hannah G. Bradley
Mrs. Gay Bryant
Carol & Andrew Campbell
Mr. & Mrs. Stephen Carlson
Mr. & Mrs. Timothy Casey
Ms. Jane Gail Copelan
Dr. & Mrs. Glynne Couvillion
Mr. & Mrs. Tim Dittmann
Tracie Doordan & Kate Doordan Klavan
Mr. & Mrs. Charles Fairbanks
Ms. Mahri Kerley
Ms. Barbara Nagle Statler
Adele & Loi Nguyen
Louise M. Parent & John P. Casaly
Linda & Dennis Sullivan
George & Polly Turpin
Dr. Mark Vuchinich
Linda & Steve Wegener

Our Membership Manager, Bambi Leonard, makes every effort to ensure that donor information is correct. If you find an error or omission, please contact her at 805.969.3767, ext. 120 or bleonard@lotusland.org.



695 Ashley Road
Santa Barbara, CA 93108

Address Service Requested

Nonprofit Org.
U.S. POSTAGE
PAID
Santa Barbara
California
Permit No. 163

Fall 2015 and Winter 2016 Member Events

MANY LOTUSLAND EVENTS are open to non-members, so please let your friends and neighbors know about the great activities we offer.

Monday, October 5

Docent Training Begins
Session 1 of 10 sessions
9:30 TO 11:30 AM

Thursday, October 15

Succulent Wreath Making Workshop
9:30 TO 11:30 AM
Please call 805.969.9990 to register.
\$75 members; \$90 non-members.

Friday, October 16

Succulent Wreath Making Workshop
9:30 TO 11:30 AM
Please call 805.969.9990 to register.
\$75 members; \$90 non-members.

Thursday, November 12

Sexy Cycads!
A Focus Tour of Lotusland's Cycad
Gardens for Lotus Keeper Members
3:00 TO 5:00 PM
See details page 5. RSVP to Member
Services at 805.969.3767, extension
120 or 115.

Saturday, November 14

Last day of regular tours before the
garden reopens Wednesday, February
17, 2016.

Tours

Tours are offered at 10:00 AM
and 1:30 PM, Wednesday through
Saturday from February 18 to
November 14. Please call
805.969.9990 for reservations.
