



LOTUSLAND

NEWSLETTER FOR MEMBERS ▯ VOLUME 23 NO. 2 ▯ SPRING 2014

Enemy of the Average Exhibition

BY VIRGINIA HAYES

*M*ADAME WALSKA lived in the limelight for many years as an operatic diva and socialite. Her penchant for high fashion was fed by the largesse of several wealthy husbands. What she didn't do was wear the fashion of those around her, and many of the best designers in Europe and, later, the U.S. were called upon to design clothes especially for her. One of her favorite designers was Mr. John (John Fredrics) who designed a fur-trimmed camel-colored cape displayed with a chiffon dress by Nettie Rosenstein. Also on display in the pavilion for a limited time is a black taffeta jacket with gold braid that came from another of her favorites, Carrie Munn of New York. Although she often chose unique designs, now and then something caught her eye from the popular designers, such as the blue satin skirt and ivory blouse by Sybil Connolly Dublin that appeared in Vogue.

Even though she was a petite five feet tall, Madame Walska was fond of wearing large jewelry. Precious and semi-precious stones of all types were crafted into necklaces, bracelets, belts and brooches for her. Even a few tiaras graced her coiffure as she appeared at the theater and other gala events. The houses of Cartier, Boucheron and Suzanne Belperron were no stranger to her, but she was just as likely to commission a piece than to buy one from a display case. She actively participated in designing and redesigning historic jewels from the days of Napoleon, the Russian Empire and even some from former potentates in India.

Madame Walska's career as a vocalist was somewhat rocky, but her devotion to theater arts was strong. When her husband, Harold McCormick, made her

Continued on page 2



Madame Walska photographed by Grand Duchess Marie Pavlovna, known as the Princess of Sweden, circa 1930.

SANTA BARBARA HISTORICAL MUSEUM

IN THIS ISSUE

| | | | |
|---|----|--|----|
| Enemy of the Average Exhibition | 1 | The Garden Shop Is Now Online | 10 |
| LotusFest! | 4 | Brian McClintic Curates for Lotusland: Instant Wine Cellar | 11 |
| A Decorated Woman | 4 | Get Inspired! | 11 |
| Are You Receiving Our E-Bulletin? | 4 | Summer Twilight Tour | 11 |
| Director's Letter | 5 | Lotusland Celebrates Once Upon A Time... | 11 |
| Mother's Day Tea and Tour | 5 | Volunteer Profile: Mary Ellen Hoffman | 12 |
| Cacti and Cocktails | 5 | Thank You to Our Garden Stewards and Garden Guardians | 12 |
| Gardening in a Drought | 6 | Help Make Lotusland's Wishes Come True | 12 |
| Tips to Conserve Water | 6 | Lotusland Welcomes New Trustee | 13 |
| Horticultural Happenings | 7 | Corporate Matching Gift Programs | 13 |
| Members' Family Day | 8 | Exceptional Plants: Auction and Sale | 13 |
| We Live in a Desert | 8 | | |
| Annual Meeting | 10 | | |
| Summer Bounty: A Lotusland Food and Wine Fête | 10 | | |

The LOTUSLAND
NEWSLETTER FOR MEMBERS
is published by
Ganna Walska Lotusland
695 Ashley Road
Santa Barbara, California 93108
805.969.3767 • www.lotusland.org

BOARD OF TRUSTEES
Larry Durham, President
Connie Percy, First Vice-President
Crystal Wyatt, Second Vice-President
Ian M. Fisher, Secretary
William M. Daugherty, Treasurer
Marc Appleton
Daniel Bifano
Andrew Chou
Belle Hahn Cohn
Geoffrey Crane
Isabelle Greene
Mason Farrell
Dawn Lafitte
Debby Longo
Suzanne Mathews
Eileen Rasmussen
Susanne Tobey
Leland Walmsley
Peggy Wiley

Lifetime Honorary Trustees

Merryl Brown
Robert J. Emmons
Arthur R. Gaudi
Kisa Heyer
Anne Jones
Michael Towbes
Carol L. Valentine

Gwen Stauffer, M.S.
Executive Director

Anne Dewey, CFRE
Director of Development

Diane Figueroa, CPA
Director of Finance

Bob Craig
Director of Marketing

Virginia Hayes, M.A.
Curator of the Living Collection

Michael Iven
Director of Grounds and Facilities

Dorothy Shaner
Director of Public Programs

Steven Timbrook, Ph.D.
Director Emeritus

Printed by Jano Graphics
Lindse Davis, Design

Mission Statement

We preserve and enhance the unique historic estate of Madame Ganna Walska, care for and improve its collections, and develop its conservation and horticulture programs, so they educate us, inspire us, and advance our understanding and appreciation of the importance of plants in our lives and in the life of the planet.



Chiffon dress, Nettie Rosenstein and fur-trimmed cape, Mr. John. On loan from the Santa Barbara Historical Museum.



Blue satin skirt and ivory blouse, Sybil Connolly Dublin. On loan from the Santa Barbara Historical Museum.

Continued from page 1

a gift of the Théâtre des Champs Elysées in Paris in 1923, she took up the new cause with vigor and passion. The theater had already gained fame for premieres of works by several of the modern French composers such as Saint-Saëns, Fauré and Debussy and a riot-inducing production by the Ballet Russes of Stravinsky's *Le Sacre du Printemps*. In partnership with her mentor Walter Straram, the theater went on to host many more premieres of modern



Black taffeta jacket, Carrie Munn New York. On loan from the Santa Barbara Historical Museum.

music and dance, and the first motion picture spectacle in spoken French, *La Fin du Monde* by Abel Ganz.

To help support her all-consuming theater, Madame Walska entered into commerce by way of a perfume and cosmetics line. Unfortunately, the economy was on the verge of crashing and with the advent of the Great Depression, she was forced to abandon this project.

Throughout her marriage to Harold McCormick, Madame Walska maintained her primary residence in Paris and spent most of her time there, but she also maintained her New York apartment (with an eye to protecting her American passport). On one voyage to the United States for a performance tour, she was held at customs where the agents demanded duty on her jewelry and clothing, claiming that her official residence was in Chicago at McCormick's address. As she wrote in her autobiography, "I positively refused to accept the application of such an unjust duty without fighting for my rights. It was on that occasion that I learned of the law that a husband's residence not only determined the wife's resident status but that it carried over for voting purposes." She joined with the National Women's Party to fight for greater equality. A law granting women the right to their own residence for voting purposes was first passed in



Madame Walska (FRONT, CENTER) was the Chairman of the American Red Cross, American Polish section, 1943.



PHOTOS BY LOTUSLAND

The renowned cycad garden at Lotusland, funded in part by the sale of Madame Walska's jewelry.

New York, signed by Governor Franklin Roosevelt, and later also passed in Washington.

Madame Walska's strong sense of identification with her homeland of Poland led her to organize a Polish festival at the Théâtre des Champs Élysées, attended by the Queen of Belgium. At the invitation of the Polish Consulate in New York, she gave a lecture on "The Polish Woman," detailing the profound part that Polish women have played in history. In the years between the two world wars, there was a movement for a Pan-European Union that would prevent the division of the world into two opposing camps. It attracted the attention of a number of the intellectuals of the day including Sigmund Freud, Albert Einstein and even the composer Richard Strauss. Madame Walska was also very interested in this project and corresponded with many of the principals (including Einstein). As the second war loomed, she also became worried about her native Poland

and, although she fled to New York from France ahead of the advancing Nazi forces, she supported from afar with checks to Polish charitable organizations such as the I. J. Padarewski Invalid Fund and the Polish Red Cross.

As the war raged, Madame Walska sought a safe haven on the opposite coast. She envisioned a self-supporting farm that could survive the disruptions of wartime. Cuesta Linda was anything but that, but her young husband, Theos Bernard, was charming and persuasive. Even so, Madame wrote, "the extreme irony Hitler's invasion made in Europe, while my simple taste and the realization of hunger and privation the people are enduring—or are not able to endure and die—in inflamed Europe prevented me from enjoying the luxury of occupying the whole house by myself." She chose to occupy a smaller cottage and fill the mansion with her possessions.

Once in place, the magic of Southern California began to cast its spell over her and her feeling of duty and steward-

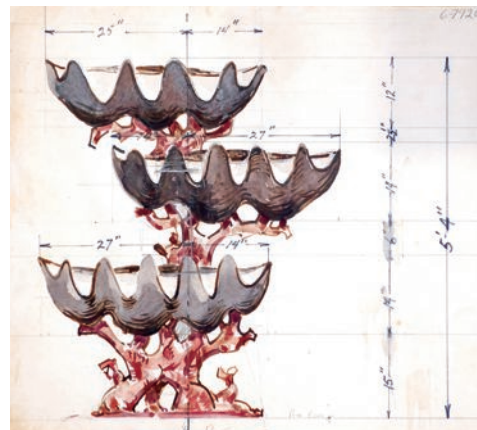
ship of the 37 acres of the estate spurred her to action. Her dramatic flair led to the creation of a garden that was anything but ordinary. A horticultural clock and circus of topiary animals were installed in the more formal garden below the house. A shallow pool that had merely served to reflect its surroundings was studded with shells and giant clam shell fountains added more drama. But it was the creation of a world-class collection of rare cycads that would become the jewel of her garden. To fund it she auctioned off many of her real jewels, those uniquely Walskian pieces, and garnered the necessary funds to continue her final garden project, the cycad garden. She collected spiny plants when others would have planted hibiscus, devoted an entire swimming pool to giant waterlilies and created an ethereal garden entirely out of blue-foliaged species. As with her other accomplishments, she created a garden that was anything but average.



Brooch, Suzanne Belperron. On loan from Hania Puacz Tallmadge.



One of the original sketches by Ralph Stevens for the horticultural clock.



An original fountain design sketch by Joseph Knowles, Sr.

LotusFest!

SATURDAY, JULY 12 • 2:00 PM

Please join us for this celebration of the spectacular flower that is Lotusland's namesake.

July is peak blooming season, and guests will have the opportunity to view these uniquely beautiful flowers while enjoying a relaxing afternoon at this casual, fun event.

Enjoy these afternoon delights:

*Wine tasting from Santa Barbara County's premier vintners
Smooth jazz • Delectable hors d'oeuvres • Lotus lore galore • Lotus viewing*

Lotus flowers open during the day and close at night. Prime viewing time during LotusFest will be until 3:00 or 4:00 PM, depending upon weather conditions, so make sure to allow time to savor the spectacular view of lotuses in bloom.

Tickets are \$95 for Lotusland members and \$105 for nonmembers. To register for this fun and enlightening event, please call 805.969.9990.

A Decorated Woman



L'Ordre National des Arts et des Lettres—France (LEFT); replicas of Légion d'honneur—France and Polish Gold Cross for Merit—Poland (RIGHT). On loan from Hania Puacz Tallmadge.

*I*N 1931, at the nomination of leading composers, critics and academics of the day, Madame Walska was awarded the *Légion d'honneur* by the French government for her work promoting the musical heritage of France. In 1972, when she turned over ownership of her theater, the Théâtre des Champs Elysées, to the French government to ensure its preservation, that nation again honored her by awarding her *L'Ordre National des Arts et des Lettres*.

Poland also recognized their native daughter with the Polish Gold Cross for Merit. Signed by the President of the Republic on November 14, 1930, it recognized "Madame Hanna [sic] Walska McCormick, Operatic artist, in Chicago."

—Virginia Hayes

Are You Receiving Our E-Bulletin?

*O*NCE A MONTH, we send out our e-bulletin to share important news that affects you and Lotusland and to give you the latest information about upcoming events.

If you have previously "opted-out" of these valuable communications, Lotusland cannot send emails to the blocked address.

But you can go to our website www.lotusland.org/about-us/newsletter and simply re-register. We look forward to having you back in the loop!

Director's Letter

CALIFORNIA HAS HAD ten droughts in the last 100 years, including the drought we are experiencing right now. While a century of hydrological and meteorological records do not represent the full range of our climate system's natural variability, paleoclimate information such as tree-ring data and streamflow reconstruction have identified droughts prior to our historical record that were far more severe—some lasting more than 200 years. Scientific evidence indicates that our climate circulates between wet and dry periods. It also suggests that we are now finishing a “wet weather” cycle and are about to enter a “dry weather” cycle.

In other words, California is due for more extreme droughts than we have historically known, even while California's demand for water is dramatically increasing. Our current water infrastructure and water supplies are not designed to manage our thirsty demand during current droughts, let alone worsening drought conditions.

In the drought that lasted from 1987 to 1992, twenty-three California counties declared local drought emergencies, but Santa Barbara experienced

the greatest water supply reductions among the larger urban areas. Even with the recent rainy reprieve at the end of February, Santa Barbara remains in a water shortage emergency.

Ironically, the mild temperatures of the Mediterranean climate in which we live are hospitable to a broad diversity of plant species so that, with plenty of water, we can grow just about any plant in our Santa Barbara gardens. The limiting factor determining the plant species we select should be water—or, rather, the lack of it. Yet it is not only what we choose to cultivate, but how we choose to cultivate that can make all the difference in the drought tolerance of our gardens.

More than 20 years ago, Lotusland chose to adopt sustainable horticulture practices in the gardens, not only as a policy decision, but also as a way of life. Many of these sustainable techniques not only eliminated the use of all chemical pesticides and fertilizers in the gardens, but helped reduce the demand for water. Some sections of Lotusland are not irrigated, and for those that are we have developed numerous horticultural strategies to reduce our use of



LEA ANNA DROWN

Gwen Stauffer

water even while we protect the rare and endangered plant species in our collections and preserve the distinctive aesthetics of this historic garden.

Water conservation and self-imposed rationing is a cornerstone of our sustainable gardening model. To learn more about Lotusland's intelligent use of water, read our gardening tips on page 6, and check out the Green Garden Practices on our website at www.lotusland.org.

Warm and rainy wishes,
Gwen L. Stauffer

Mother's Day Tea and Tour

SATURDAY, MAY 10
1:30 TO 4:00 PM

One of our most popular events is celebrating Mother's Day—the Saturday before Mother's Day—by touring the garden and enjoying tea, refreshments and music in our pavilion patio.

The tours are docent-led or members may explore the garden on their own. This is the perfect treat for someone special in your life!

Tickets are \$75 for members, \$85 for nonmembers and \$30 for children ages 3–12. Advance reservations are required and may be made by calling 805.969.9990.

Cacti and Cocktails

SATURDAY, MAY 17 • 3:00 TO 6:00 PM

STROLL THROUGH THE GARDEN and experience the magnificent epiphyllum and cactus blooms. The cactus garden is especially lovely in the late afternoon light. Join a docent-led tour or members may explore the

garden on their own. Specialty cocktails and hors d'oeuvres will be served.

Admission is \$60 for members and \$70 for nonmembers. Reservations are required and may be made by calling 805.969.9990.



LOTUSLAND

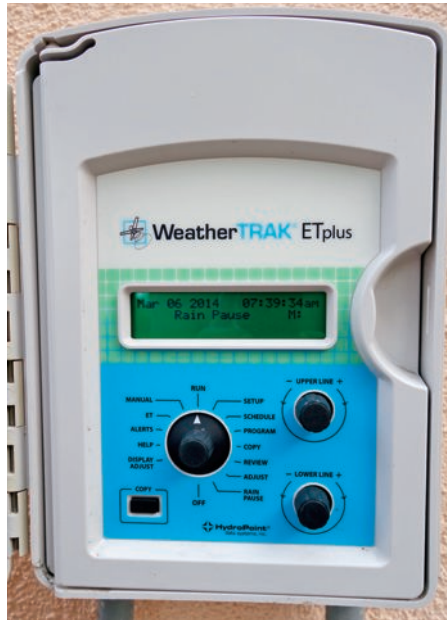
Jane Gail Copelan with cactus garden designer Eric Nagelman.

Gardening in a Drought

TIPS TO CONSERVE WATER

IRRIGATION

- If you have automatic systems, turn them off. Turn them on only after the soil has dried from the last rain or irrigation cycle. This interval will be longer in cooler months.
- Replace water-wasting spray heads. Shrubs and trees can grow happily with drip irrigation systems. Lawns and groundcover sprinklers can be fitted with efficient rotating nozzles that put the water right where it is needed without loss to misting and overspraying.
- Check the system for leaks and broken heads or joints.
- Adjust automatic systems to shorter cycles. Cut the number of times the system comes on and cut the time allotted to each station by the desired amount of water reduction.



A "smart irrigation controller" that automatically adjusts the system based on weather data.



Efficient irrigation system heads known as "shrubbers" are adjustable to deliver exact amounts of water.

- Install a smart irrigation controller that automatically adjusts the irrigation schedule based on real time evapotranspiration (ET) rates.
- Follow the rules of your water provider about hours of irrigation: these will likely be during the night and early morning.
- If you employ a gardener or garden maintenance service, be sure to communicate with them about these changes.

PLANT SELECTION

- Reduce or eliminate thirsty plants such as rye and fescue grasses. If a

lawn is a must, replace with newer drought-resistant varieties.

- Plant California native plants and those from other Mediterranean climate zones. Consult the internet or Sunset's *Western Garden Book*.
- Choose which plants you want to concentrate on: fruit and citrus trees are vulnerable to drought, so you may want to eliminate something else in favor of giving them the water they need.
- Perennials, annuals and other plants with shallow root systems will also be at risk. Consider succulent plants as replacements.

MULCH

- Cover exposed soil with 3 to 4 inches of mulch material. Organic mulches not only reduce direct evaporation, but also help build a more resilient soil with beneficial microbes that aid in keeping the soil loose and work symbiotically with plant root systems to harvest water.
- Mulches also smother weeds that are competing for the water trapped in the soil.
- Mulch from the county green waste recycling program is free for the taking or you can pay to have it delivered.

USE A BROOM

- Clean pathways and patios with a thrifty broom, not a wasteful blast of water. —Virginia Hayes



Succulent plants can be handsome replacements for thirstier species. Echeveria elegans at Lotusland.



Green waste is ground and briefly composted by the county, producing excellent mulch material.

Horticultural Happenings

DROUGHT STRATEGIES

IT'S MARCH, and we've recorded only five inches of rain at Lotusland. The drought is of high concern to us all now and well into the future.

Water from Montecito Water District is used for all domestic purposes at Lotusland, including employee residential use, staff and visitors' use and drinking fountains. The drought has initiated changes to improve water conservation: staff and residents will limit household water use, and most events will use compostable dishes and cups.

Lotusland relies on water from one well for irrigation of the landscape and nursery plants and for all other landscape maintenance-related activities. We are able to measure water pumped from the well to the reservoir and water delivered to the garden. We know if there's a leak, we monitor and evaluate our water conservation efforts.

Well water is used to replace evaporation in pools and ponds. There are automatic irrigation systems in the Japanese, Australian, fern, theater, topiary and blue gardens, as well as the main lawn, that are programmed to water as needed between the hours of 7 PM and 7 AM. Permanent and portable drip/low flow systems are used in the

fruit orchards, chamaedoreas, bamboo, on various tree ferns and palms, and to provide water to specimen plants. A 25% cutback of all automatic irrigation systems was implemented in February 2014. Some of our systems are old and replacement of old sprinkler nozzles with new more efficient ones will help with water conservation.

Although horticultural practices implemented over the past 20 years prepared the soil and plantings at Lotusland for reduced water use, additional cuts could be stressful to some plants. We believe careful monitoring and practices such as soil aeration and compost and mulch applications will allow us to use even less water to maintain the garden and will help us with future garden maintenance.

SBCC WORK EXPERIENCE STUDENTS

SINCE THE MID-1980s, Lotusland has been involved in the collaborative work experience program with Santa Barbara City College. Students enrolled in the Environmental Horticulture program gain practical experience and earn school credit working part-time at Lotusland. A generous grant from The Towbes Foundation is funding work experience



Lauren and Jonathon helped fertilize the fern garden.

PHOTOS BY MICHAEL IVEN

positions for two SBCC students in 2014. During the past month, Lauren Flynn and Jonathon Avila have assisted with an irrigation retrofit in the fruit orchard, tree work cleanup in the Japanese garden and fertilization throughout the garden. Eventually they will work with all grounds staff in all areas of the garden, including the nursery. We are especially grateful to The Towbes Foundation for funding this valuable and rewarding program.

IN FOND MEMORY

WE WERE SADDENED to hear of the recent passing of two ex-Lotusland employees. Ken Opiat and Penn Davis were both excellent horticulturists and well known in the community for their botanical knowledge and passion for plants.

Ken worked at Lotusland from 1987–1993 and maintained the fern garden for most of those years. He worked closely with Bill Paylen and other notable plantmen to develop the fern collection. He also spearheaded the refinement of Lotusland's composting program that has become a core component of the sustainable horticulture program we practice today.

Penn was working at the Santa Barbara Zoo when we first met. He was always the one to come to Lotusland to pick up bromeliads thinned out of the garden in the course of regular maintenance or renovations. Many Lotusland bromeliads were used in landscaping at the zoo at that time. Penn's love of plants was more than a passion. It was a life-long addiction that resulted in the introduction of new species to the collections. He worked in the blue garden and also maintained the water gardens during his tenure here from 2002–2006.

We remember them for their camaraderie and for their contributions to Lotusland and the community at large.

—Michael Iven



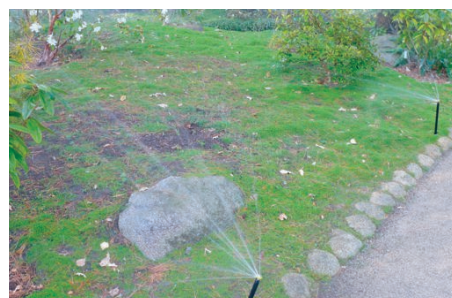
All grounds staff use soil probes to check the soil profile and to determine soil moisture content.



Soil probes will indicate water infiltration after irrigation.



Spray nozzles on older irrigation systems are not efficient because of "misting," which allows water to be blown away and/or to evaporate before reaching its intended target.



Replacing old nozzles with more efficient nozzles, such as these adjustable rotary nozzles, can save water and reduce runoff.

Members' Family Day • *We Live in a Desert, Let's Be Water Wise!*

SATURDAY, MAY 31 • NOON TO 4:00 PM

Lotusland wishes to thank you, our members, for your support by hosting our 17th annual Members' Family Day. Everyone is invited, especially children of all ages!

Generously Sponsored by
Thomas & Nancy Crawford, Jr. in Honor of Their Grandchildren

Activities will include:



PHOTOS BY NELL CAMPBELL



COURTESY PHOTO



BOB DeBRIS



Panzumo performs two fun and invigorating drumming and dancing shows in the theatre garden • 1:30 to 2:15 PM AND 2:45 to 3:30 PM

On the main lawn, everyone can enjoy activities and crafts, face-painting by **Anji Lawson** and the giant mural by **Kathy Mills** • NOON TO 3:30 PM

Dress up in desert-style costumes (provided) and pose for your free souvenir photo taken by photographer extraordinaire **Bob DeBris** • NOON TO 3:30 PM

Garden Admission to Members' Family Day IS FREE!

But you must reserve space for your family by mailing the reservation form,
along with a non-refundable vehicle fee of \$15.

Due to the popularity of this event and to allow as many members as possible to attend,
Lotusland requests only one vehicle per membership. All vehicles are valet parked.
No phone or email reservations, please. Call Member Services if you have questions.

Bring your own lunch basket and enjoy a picnic on the lawn!

NOTE: No food will be available to purchase.

Complimentary lemonade, iced tea, juice boxes and water will be available all afternoon.

Enjoy a complimentary ice cream cone served on the main house patio from 1:00 to 3:00 PM.

A limited number of picnic blankets will be available, but please
consider bringing your own to help us save water needed to wash them.

Please return this reservation form to: Ganna Walska Lotusland, Attn: Member Services, 695 Ashley Road, Santa Barbara, CA 93108.
Your confirmation, parking pass for entry and a map will be mailed to you upon receipt of your reservation form.

Reservation Form

Member Name(s) _____ Total no. of attendees _____ Phone no. _____

Address _____ No. of adults _____ No. of children 3 to 12 _____

_____ No. of teens _____ No. of children 2 and under _____

Email address _____ Knowing children's ages helps us to plan activities.

☐ Enclosed is our family's non-refundable vehicle
reservation of \$15.00

**There will be no food available to purchase,
so please bring your own lunch basket!**

Complimentary assorted drinks will be available all afternoon.

Don't delay mailing your reservation form!

Payment Method:

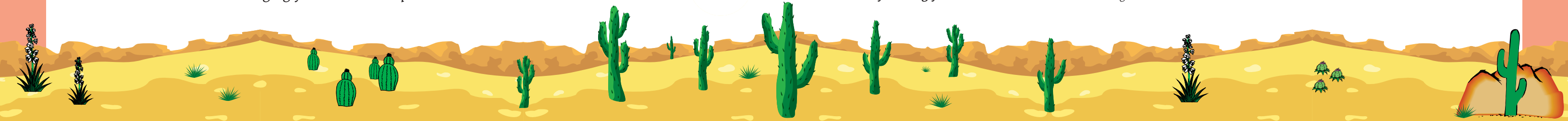
☐ Check enclosed made payable to Ganna Walska Lotusland

☐ VISA ☐ MasterCard ☐ AMEX ☐ Discover

Card Number _____

Exp. Date _____ Security Code _____

Signature _____





Lotusland trustee Leland Walmsley, Rosalind Gies-Amorteguy and trustee Crystal Wyatt.

PRESIDENT LARRY DURHAM welcomed guests to the 2014 Annual Meeting and thanked his fellow board members for their hard work and dedication to Lotusland. He was followed by Executive Director Gwen Stauffer, who delivered the State of the Garden Address. Gwen summed up the spirit of the evening and celebrated the success of the year with these words:

"Lotusland is one of the most

historic places in Santa Barbara. It is also one of the most scientifically important, and it is also one of the most beautiful. It is a special place that helps bring meaning and value to our daily lives by honoring, inspiring and supporting the creative, intellectual, artistic and spiritual aspect of ourselves."

Here are some of the successes Lotusland celebrated recently:

- 242 Lotusland volunteers gave over 14,500 hours of service in 2013.
- The 2013 exhibition *Swarm: A Collaboration with Bees* helped define Lotusland as a community leader in the arts as it attracted new audiences, new members and new donors.
- The 2013 Annual Plant Auction and Sale grew by 50%, was very successful and is turning into a noted event for plant lovers state-wide.

Annual Meeting RECAPPING THE HIGHLIGHTS OF 2013

• In 2013, 30 to 35% of all the available visit slots (as per Santa Barbara County's limits on visitation) were given to the community for free.

• In 2013, the Neptune fountain was restored and the bromeliad garden was renovated.

• Lotusland received a \$1 million endowment for the topiary garden.

• Lotusland won the Mayor of Santa Barbara's Award for Accessibility.

• Lotusland revenues have increased by 30% since 2008.

• The Lotus Society Endowment Fund has grown by 300% since 2008.

In closing, Gwen had this to say, "I hope you will continue to help us in fulfilling our vision that Lotusland will be renowned globally and treasured locally, and made safe and secure, happily ever after."

Summer Bounty: A Lotusland Food and Wine Fête

SAVE THE DATE! SATURDAY, JUNE 21

SUMMER BOUNTY: A Lotusland Food and Wine Fête is a culinary celebration of superbly prepared dishes featuring locally sourced ingredients, all fresh from the farm as well as Lotusland's organic orchard, and expertly paired with wines from a local vintner.

The beautiful evening light of the summer solstice will make this farm-style feast an unforgettable dining

experience. Our guest chef and guest vintner will lead the conversation to share their gastronomic passions and culinary inspirations for creating this memorable evening with you.

This event is created specifically for Lotus Keeper level members. Lotus Keeper level members will receive an invitation with more information in May. Tickets will go on sale at that time.



Not a Lotus Keeper level member? Call Member Services at 805.969.3767, extension 120 or 115 to find out more about the benefits and special opportunities for Lotus Keeper level members at \$500 and above.



The Garden Shop Is Now Online

THE LOTUSLAND garden shop is now online, making it easier than ever to find that perfect gift for a friend or a unique item for yourself. Visit www.lotuslandshop.org to see our selection of products including jewelry, hats, tiles and much more—with many items made exclusively for Lotusland.

Members enjoy a 10% discount by using the code LLMember2014. The same valuable discount you receive in the garden shop is now available all

year long with the convenience of shopping from your home.

Look for this special offer: Purchase both *Ganna Walska Lotusland: The Garden and its Creators* by Sharon Crawford and *Ganna Walska Lotusland: Collections and Horticulture* by Virginia Hayes and Steven Timbrook for just \$30 (originally sold at \$18.95 each).

Help support Lotusland by telling your friends that they can now shop at Lotusland online.

Brian McClintic Curates for Lotusland: *Instant Wine Cellar*

MASTER SOMMELIER BRIAN McClintic will curate an exceptional collection of fine wines to be a featured auction item at this year's *Lotusland Celebrates* on July 27. Brian and his business partner are the owners of Les Marchands—a wine bar and merchant in Santa Barbara's "Funk Zone." Brian's curated collection

for Lotusland is for the serious wine connoisseur.

There will be a kick-off BYOB (bring your own bottle) to donate the most rare and amazing wines to the collection. Look for the full *Instant Wine Cellar* listing posted soon on lotusland.org.

For more information, please contact Anne Dewey at 805.969.3767 ext. 105.



Brian McClintic

EMILY RAILSBACK



Get Inspired! MAY IS SANTA BARBARA GARDEN APPRECIATION MONTH

GET INSPIRED! is the rallying cry heard from Santa Barbara's many public gardens that have collaborated to offer special garden activities throughout the month of May. Explore the area's wealth and

diversity of public gardens with special events and activities throughout May.

Activities Include:

- Docent-led Tours
- Free "Garden Talk" Lecture Series
- Free Admission to Several Venues
- Special Events, Exhibits and Book Signings
- Garden Teas at Luxury Hotels
- Water Conservation Program

- Bonsai Exhibition
- Home Garden Tours

The Santa Barbara Public Gardens Partnership is a county-wide collaboration whose mission is to promote awareness of our unique and inspiring public gardens.

For a complete list of offers and activities visit www.sbpublicgardens.org. Celebrate with us.

Summer Twilight Tour SATURDAY, JUNE 7 4:00 TO 6:30 PM

Begin Your Summer at Lotusland viewing the garden in a magical light, with blooms and colors that are unique to the season. Our popular Summer Twilight Tour invites guests to enjoy the long days during a very special late afternoon.

Members and their guests can choose to reserve a docent-guided tour or explore the garden on your own. Wine and light hors d'oeuvres are served from 5:00 to 6:00 PM on the geranium terrace overlooking the main lawn.

\$65/members, \$75/nonmembers.
Reservations are required. Please call 805.969.9990.

LOTUSLAND CELEBRATES *Once Upon a Time*

JULY 27, 2014 AT FOUR O'CLOCK

Please Join Us • Space is Limited • Reserve Your Table Now

- Sponsor \$15,000 (ten tickets, five VIP parking passes and a Sponsor gift)
- Sustainer \$10,000 (ten tickets, two VIP parking passes and a Sustainer gift)
- Contributor \$7,500 (ten tickets, two VIP parking passes and a Contributor gift)
- Benefactor \$5,000 (ten tickets, one VIP parking pass and a special gift)
- Patron \$1,200 (two tickets)

Invitations will be mailed mid-June. Individual Tickets (\$375) will be available beginning July 15 as space permits. Contact Courtney Tentler at 805.969.3767 ext. 116 or ctentler@lotusland.org for more information.



Mary Ellen Hoffman

AFTER MOVING TO Santa Barbara from Incline Village in 2005, Mary Ellen attended a Docent Training reception and followed Nancy Wood on a mini tour. She was enthralled by the gardens and the exotic way Madame Walska presented Lotusland, but the Giant Dutchman's Pipe (*Aristolochia gigantea*) blooming in the pavilion courtyard was the clincher for her. Mary Ellen decided right then to sign on for the fall 2005 docent training, hoping that her skills in memorizing details and public speaking from her lawyering days would carry her through training. After 14 weeks of training with the first-rate speakers and materials, Mary Ellen was fully educated about the history of the estate, Madame and the gardens.

Thank You to Our

GARDEN STEWARDS

Mr. & Mrs. Larry Durham
Mercedes Millington & Jack Mithun
Mrs. Andy Pearson
Michael & Patty Rosenfeld
Lynda Weinman & Bruce Heavin

GARDEN GUARDIANS

Mr. & Mrs. Ted Friedel
Ms. Cyndee Howard
Suzanne & Gilbert Mathews
Mr. & Mrs. John K. Percy
Mr. & Mrs. Gary Uwé Rollé
Mr. Jeffrey F. Romano & Mr. Stan A. Shayer
Mrs. Anitra P. Sheen
Mrs. Harold Simmons
Ms. Beverly Smaniotto
Ms. Jeanne Thayer
Ms. Melanie Trent

Volunteer Profile: Mary Ellen Hoffman

Mary Ellen's father had a small greenhouse in Northern Virginia where she grew up, and she never forgot when he so proudly harvested his first pineapple (the only edible bromeliad!). With her obvious new muse, Lotusland, Mary Ellen managed to create individual spaces, if not actual distinct gardens, in her small yard. Her garden went through extensive changes, and she won a Santa Barbara Beautiful award two years ago. Becoming a Santa Barbara County Master Gardener was also a very beneficial achievement. Mary Ellen loves ferns, but finds many other plants beautiful and interesting. She even has her own Giant Dutchman's Pipe.

Cycling, swimming, hiking and skiing are Mary Ellen's hobbies, and she tries to do one of those things every day. Jackson, a golden retriever, and Zoe, a goldendoodle, are her two walking buddies for daily exercise. Mammoth and the Sierra region are areas she likes to visit several times a year. Daughter Sarah studies medicine in Nashville, so Mary Ellen visits her a few times a year. France, Spain and Italy are on the future travel list.

Besides being a docent for Lotusland, Mary Ellen has been a tour facilitator since 2007. She has mentored and evaluated members of the three docent training classes and she also has worked many special events. Mary Ellen has volunteered with Hospice of

Santa Barbara's I Have A Friend program, mentoring a child who has lost a parent, and in ARFI, a school reading program where children read to a dog as a way to gain reading skills and confidence. Mary Ellen is also a docent at several other venues, most notably the Santa Barbara Museum of Art, where she is now a provisional docent instructor. Mary Ellen thought she would have never embarked on such an undertaking without having learned the skills of being a good docent at Lotusland.

Mary Ellen has had many good docent experiences over the years. One was a tour of eight ladies who were having a reunion. They were about the same age as Mary Ellen and treated her like one of the gang, taking her to lunch with them after the tour. Sharing the lodestone in the cycad garden with guests young and old, and witnessing how they delight at the paperclips, are other tour highlights for her.

Not only does Mary Ellen share Lotusland with family members and friends, she got to show the garden to her sister and brother-in-law just before he passed away from a terminal illness. Her sister said it was the highlight of his final visit to Santa Barbara. We appreciate that Mary Ellen shares her love of the garden and is a great hostess at Lotusland, and sees the joy and wonder that the garden and its history brings to our guests.

Help Make Lotusland's Wishes Come True

TO DONATE FUNDS for any of these items, please call Anne Dewey, Lotusland's Director of Development, at 805.969.3767, extension 105 or email her at adewey@lotusland.org. Thank you!

🛠️ ELECTRIC WORK CART

To assist in purchasing a work cart for grounds and facilities staff. \$1,500

🌵 CACTUS GARDEN IMPROVEMENTS

Purchase of new species of cactuses from Argentina, Bolivia, Chile and Peru as well as additional screening plants for the back of the new bed. \$600

Lotusland Welcomes New Trustee



LOTUSLAND

BELLE HAHN COHEN

ISABELLE HAHN COHEN (Belle) was born into the cultural world of New York City with Central Park and the Met in her backyard, where her father, the renowned art dealer Stephen Hahn,

exposed her to the finest art and music. Belle's mother, Thomasine Richards, followed her instincts and moved the family to Montecito because she dreamed of a house surrounded by paradise. Growing up on Cold Springs Road with Lotusland now in her backyard, Belle believed that her mother's visions of paradise must have been Lotusland, where her imagination and love for the garden was nourished. "Thomasine's greatest love in life, along with her children, are flowers, and she taught her daughters, Lily and I, that we could pick any flower in her garden only if we learned the name of the plant. The gardens were always to be respected. We had our own gardens and visited Lotusland often for education and pure joy."

Belle has been to almost every

Lotusland Celebrates event with her father as she grew up—the creativity and brilliance there inspired her to support Lotusland galas recently after her father passed. Also the events had such an impact that they influenced her, along with planning her wedding, to start her own event planning business. Belle recently graduated from Sarah Lawrence College, but has had an eccentric educational journey, experiencing many different schools and learning environments. Ultimately, she followed her heart to come back to Santa Barbara to live in paradise during her father's last few years. Since his passing, she continues his legacy by supporting organizations he loved and she loves. Belle lives in the Santa Barbara paradise with her husband, Daniel Cohen, and their one-year-old son, Felix Stephen Cohen.

Corporate Matching Gift Programs

WHEN LOTUSLAND first opened, it was classified as a private operating foundation. This classification prevented some individuals, foundations and corporations from making tax deductible donations, and many corporations were unable to match charitable gifts made by their employees.

Lotusland applied to the IRS in 2009 to change our status to a public charity; a much more favorable classification which was granted that same year. One of the positive outcomes of this change is that more corporations can match employee donations—just ask Lotusland members Jeff Romano and Stan Shayer! Since 2009, they have taken the necessary steps with their employer to assure their donations are matched dollar for dollar. Graciously, Jeff and Stan have been able to increase their charitable giving over the years,

and Lotusland has been able to receive valuable corporate matching funds to increase membership levels and benefits.

Many employers offer matching gift programs for their employees, retirees and spouses. More frequently, we see companies that offer a financial match for an employee's time for being a community volunteer. Your donation to Lotusland can be doubled or possibly tripled—at no additional cost to you! Lotusland has received matching gifts from Amgen, Capital Group Companies, Chevron, IBM and Patagonia, to name just a few.

Have you ever wondered if your charitable gift could be matched by your employer? If so, log onto www.lotusland.org/support/matching-gifts and type in your company's name. If your company is eligible, you may be directed by a link to your company's site to process the paperwork. Otherwise, you may need to request a matching gift form from your employer. We truly appreciate and thank you for making the extra effort to help Lotusland maximize your charitable gifts!

For more information about Corporate Matching Gift Programs, please contact Membership Manager Bambi Leonard at bleonard@lotusland.org or 805.969.3767, extension 120.



Jeff Romano and Stan Shayer

SAVE THE DATE

**Exceptional Plants:
Auction and Sale**
SATURDAY, SEPTEMBER 20
2:00 TO 5:00 PM

Back by popular demand!
Save the date for a fabulous plant sale and auction for garden connoisseurs featuring choice, rare and hard-to-find plants.

Ticket and sponsorship information is available at www.lotusland.org or call Courtney Tentler at 805.969.3767 ext. 116 or ctentler@lotusland.org.



Lotusland Gratefully Acknowledges Donations

DECEMBER 2013, JANUARY AND FEBRUARY 2014

2014 GIFTS FOR THE GARDEN ANNUAL APPEAL

CARE OF THE GARDEN FUND

Ms. Sally Armour
Dr. & Mrs. William Cahill
Mr. & Mrs. Phil R. Jackson
Sue Tavis
Nancy & Kent Wood

EDUCATION FUND

Robert & Carol Bowen
Jacquelyn Klein-Brown & Dr. Michael Trambert
in honor of Eileen Rasmussen
Nita & Henk van der Werff
in honor of Louise Anneke Legler

GENERAL FUND

Herb & Bernadine Aldwinckle
Mr. & Mrs. Marc Appleton
Ms. Bernadette Bagley
Mr. Roderick Beattie
Daniel Bifano & Allan Brostrom
Robert E. Blaha & Monica Koegler-Blaha
The John C. & Shelby C. Bowen
Charitable Foundation
in honor of Shelby C. Bowen
Mr. & Mrs. M. Peyton Bucy
Nigel & Connie Buxton
Margaret Carlberg
The Capital Group Companies
Charitable Foundation
as directed by Mason Farrell
Mr. & Mrs. Timothy Casey
Mr. & Mrs. Andrew Chou
Judi Clare
Mr. & Mrs. Geoffrey Crane
Bill & Kathy Crevier
in honor of a great tour with docent Dave Heinz
The Roy E. Crummer Foundation
Mr. Oswald J. Da Ros
in memory of Kathleen & Madame Walska
Ms. Elizabeth W. Dake
in memory of Maya Pekkanen
Mr. & Mrs. William M. Daugherty
Brian & Stella Day
Tom Dennis & Chela Kleiber
Anne & Jeffrey Donahue
Mr. & Mrs. James Drasdo
Mr. & Mrs. Larry Durham
Jacqueline Dyson
Ian & Michelle Fisher
Dorothy & John Gardner
Mr. Paul F. Glenn
Dr. & Mrs. Leonard Grabowski
Mrs. Paul Gray
Leslee Hackenson & Roger Allers
Ms. Karin Haeusler
Carolyn Hanst
Ms. Deanna Hatch
Mrs. Joanne C. Holderman
Mr. & Mrs. Sean Hutchinson
Mr. & Mrs. James H. Jackson
Mr. & Mrs. Palmer G. Jackson, Jr.
Mr. & Mrs. Palmer G. Jackson, Sr.
Jeff & Hollye Jacobs
Josiah & Karen Jenkins
Mr. & Mrs. Herbert J. Kendall
Dawn & David Lafitte
John & Carole Lee
in honor of Connie & John Percy
Mr. & Mrs. Neil Levinson
Ms. Sarah Jane Lind
Mr. Byron E. Lippert
Mr. Harlis Maggard
Bob & Betsy Manger

Suzanne & Gilbert Mathews
Mr. David Meldrum-Taylor
Ms. Mimi Michaelis
Morgan Stanley Employee Charitable Fund
directed by Debra Ann Galin
Mr. & Mrs. Jack Morrison
Mr. & Mrs. John Mozart
Barbara Nagle Statler
in appreciation for the privilege of being a docent
Danny & Debby Needham
in honor of Andrea Joel
Mrs. Marjorie M. Nelson
Network For Good
directed by Dr. & Mrs. Daniel Ryan
Ms. Kristan O'Donnell
Mr. & Mrs. John K. Pearcy
Mr. & Mrs. Joseph Perena
Elliot & Phyllis Prager
in memory of Hélène Gaudin de Villaine
Katherine Prager
in memory of Hélène Gaudin de Villaine
Eileen & Alex Rasmussen
Regina & Rick Roney
Sally & Bill Russ
Stephen P. Schaible & Daron S. Builta
George Schoellkopf & Gerald Incandella
Peter Selig
Ms. Patricia Sheppard
Joanne Shiebler
John & Judy Shockey
in honor of Harlis Maggard
Mr. & Mrs. Ed Snider
Sokolove Charitable Fund
Mr. Leonard Somdahl
in memory of Ellen Somdahl
Mr. & Mrs. Ken Stinson
Ms. Courtney Tentler
in memory of Edeline Van Moll
Ms. Jeanne Thayer
Ms. Kitty Thomassin
Steve & Caroline Thompson
Bruce and Robin Tiffney
Drs. Steven & Jan Timbrook
Gary & Susanne Tobey
Miss Shirley Toepfner

Transformation Trust
Terry & Cricket Twichell
Susan & David Vinair
Leland & Diana Walmsley
Mr. Dennis M. Whelan
Barbara & Tex Williams
Tim & Robin Willis
Crystal & Clifford Wyatt
Dr. & Mrs. Philip Wyatt
in honor of Eric Nagelmann

CACTUS GARDEN ENDOWMENT

Men's Garden Club of Santa Barbara
Mr. & Mrs. Michael Towbes

THE LOTUS SOCIETY

NEW MEMBERS

Laurie Marx & Anthony Mangini

THE LOTUS SOCIETY DONATIONS

Mr. Harlis Maggard
Anonymous

GRANTS

John Percival & Mary C. Jefferson
Endowment Fund
The Wood-Claeysens Foundation

MEMBERS' FAMILY DAY SPONSOR

Thomas & Nancy Crawford, Jr.
in Honor of Their Grandchildren

GANNA WALSKA: ENEMY OF THE AVERAGE EXHIBITION

SPONSORS

Chaucer's Books
Jane Gail Copelan
Hotel Cheval
Rich & Luci Janssen
Anitra Sheen
Hania Puacz Tallmadge

Renewing Lotus Keeper Members

DECEMBER 2013, JANUARY AND FEBRUARY 2014

GARDEN STEWARD

Mercedes Millington & Jack Mithun

GARDEN GUARDIAN

Suzanne & Gilbert Mathews
Mr. & Mrs. Gary Uwé Rollé

GARDEN CONSERVATOR

Mr. Oswald J. Da Ros
Mr. Arthur R. Gaudi
Mr. & Mrs. Richard Janssen
Gary & Susanne Tobey

GARDEN CULTIVATOR

Monte & Merryl Brown
John & Tania Burke
John Mike & Marcia Cohen
Keith & Heather Crummer
Gary & Hermine Gallup
Nancy & Michael Gifford
Dennis McGowan & Rudie van Brussel
Mr. & Mrs. John Mozart
Mr. & Mrs. Warren Staley

GARDEN ADVOCATE

Daniel Bifano & Allan Brostrom
Patricia P. Broome
Joyce & Roland Bryan
Dr. & Mrs. James Coyle
Tracie Doordan
& Kate Doordan Klavan
Robert Eaton & James McPherson
Margo & Robert Feinberg
John & Barbara Harrigan
Mr. John Hayes
Karen & Harry Kolb
Mr. & Mrs. Edward Langhorne
Caroline Mitchell & Mark Chesebro
Mr. Eric Nagelmann
Ms. Vee Noelle
Belita Ong
& J. Gordon Auchincloss
Christine & Stefan Riesenfeld
Mark Rios & Guy Ringler
Mr. Sherman Vincent
Leland & Diana Walmsley

ADDITIONAL EXHIBITION DONORS

Laura & Mark Bacon
 Bill Dewey
 Barbara Hilaire
 Kathy Hulick
 Margaret Joan Florals
 Santa Barbara Historical Museum
 Samy's Camera
 Kay Spilker / LACMA
 Lady Leslie Ridley-Tree
 Anonymous

**HUTTON WILKINSON ON TONY
 DUQUETTE & GANNA WALSKA,
 BOTH ENEMIES OF THE AVERAGE**
SPONSOR

Cabana Home

ADDITIONAL DONATION

Kenneth Volk Vineyards

GENERAL DONATIONS

Kathleen Brooks
in honor of docent Arlene Belmontes

Mackenzie Burford
in honor of Douglas Hall's birthday
 Rebecca Campbell
 Mr. Oswald J. Da Ros
in honor of Frank Fujii
 Catherine Greany
 Leslee Hackenson & Rogers Allers
 Barbara Hilaire
 Hi Fi Club
 Neil Hoffman
in honor of docent Minda Kraines
 Mr. Harlis Maggard
in honor of Larry Disharoon's birthday
 Daniel & Judith Riley
in appreciation of docent Mary Ann Herschede
 Santa Barbara County Horticultural Society
 Anonymous (2)
in appreciation of docent Kathe Klock
in appreciation of a tour with Bill Malis

GIFT MEMBERSHIP DONORS

Victoria & John Bortolussi
 Donna Bradford
 Mr. Carl Burton
 Mr. and Mrs. Bob Craig

Derek Duncan
 Mrs. Karen Garrolini
 Ms. Alexandra Geremia
 Jonathan Gestetner
 Alicia Kovary
 Kathleen Lanford
 Bruce & Bernadine MacLean
 Rachel Cantella McNamara
 Blythe & Cory Montanaro
 John & Connie Percy
 Mary-Lee Ren
 Patrick Ryan
 Bill & Lynda Spiewak
 Ms. Jeanne Thayer
 William Tierney
 Megan van den Bergh
 Raul, Cristi & Alonzo Vasquez
 Nancy & Tony Wall
 Ernest Willis
 Russell Zink & Sean Callaway

PLANT & EQUIPMENT DONORS

Max Acuna
 John Vasi

Lotusland Members

WE WELCOME NEW MEMBERS WHO JOINED
 IN DECEMBER 2013, JANUARY AND FEBRUARY 2014

LOTUS KEEPERS**GARDEN CULTIVATOR**

Mr. & Mrs. James Zissler

GARDEN ADVOCATE

Ann Ash
 Robert Bett, PlantHaven

GENERAL MEMBERSHIPS**FRIEND**

Victoria & John Bortolussi
 Guy & Deborah Brown
 Deborah Gunther
 Pamela Koide-Hyatt
 & Richard Hyatt

FAMILY

Mr. John Able & Mrs. Nell Calaway
 Elia Aldapa
 Robynet Almarez & Mitchell Perry
 Cindy Beraldo & Michael Brundage
 Peter Brummel & Ann Fryer
 Thomas Cantella
 Kate & Art Coppola
 Renee DeJong & Ronald Camp
 Derek Duncan & Saulina Martinez
 Sylvelin Edgerton & Kalon Gronquist
 Gary & Ada Feldman
 Patricia & Michael French
 Joanne & Glenn Hollingshead
 Dia & Chris Hurd
 David Kilpatrick & Leela Cyd Ross
 Terry Kilpatrick & Virginia Brown

Claire Kouba & Eric Slessarev
 James & Andrea Krautmann
 Mark & Margaret Joan Lloyd
 Cindy Mayer & Richard Doebling
 Judy Meath & Xandra Coe
 Mr. & Mrs. Ron Mickelson
 Chelsea Miro & Caleb Miller
 Vivian Neou & Ramon Curiel
 Lola & Jorge Rangel
 Barbara Reed
 Dr. Jennifer Salcido
 Joan & Harry Saperstein
 Susie & Frank Schiff
 Karin & Jeff Shelton
 Haley Southwick
 Travis Spencer
 Catherine & Arthur Stout
 Andrew & Julie Tooouli
 Steve & Kristen Veros
 Lisa Wallmark & Jonas Svensson
 Julie & Duncan Young

INDIVIDUAL

Dan Baum
 Randolph Bennett
 Lois Brown
 Kristin Cook
 Cathy Duncan
 Lenore Duncan-Pruett
 Leo Gestetner
 Margaret Gosfield
 Lynn Hamilton
 Devan Hartnett
 Katie Hatch
 Betty Helton
 Victoria Hendler
 Michele Hunter
 Virginia Stewart Jarvis
 Rosalyn Leach
 Brenda Martin
 Natalie A. Mates
 Dr. Laurel Mehler
 Cynthia Meyers
 Lauren Petersen
 Lorie Porter
 Jayne Ryan
 Michele Tornabene

Members Who Have Increased Their Level of Support

DECEMBER 2013, JANUARY AND FEBRUARY 2014

GARDEN CONSERVATOR

Ms. Alexandra Geremia
 Eileen & Alex Rasmussen
 Scott & Lannette Turicchi
 Rick & Sheila Vitelle

GARDEN CULTIVATOR

Mrs. Marilyn Magid
 Ms. Ann Petersen & Dr. Leslie Pam
 Peggy P. Wiley & Wilson Quarré

GARDEN ADVOCATE

Dr. Christy Beaudin & Ms. JudyAnn Dutcher
 Nigel & Connie Buxton
 Carolyn Cooper
 Mr. & Mrs. Ray F. Evert
 Mr. John A. Perez & Mrs. Ann N. Lowry
 John Vasi & Nancy Willstatter

GENERAL MEMBERSHIPS**FRIEND**

Katherine Beattie
 & Diana Goodman
 Jim & Ruby Bradburn
 Mariecristine & David Dart
 Mrs. Theodore W. Dobbs
 Mr. & Mrs. James B. Hartle
 Mr. & Mrs. Fred Keller
 Oly Moran & Gloria Arnell
 Mr. & Mrs. Mark Schiffmacher
 Mr. & Mrs. Tom Schoenberg
 Ms. Hillary Tentler

FAMILY

Ron Garber & Rebecca Garbett



Ganna Walska LOTUSLAND®

695 Ashley Road
Santa Barbara, CA 93108

Address Service Requested

Nonprofit Org.
U.S. POSTAGE
PAID
Santa Barbara
California
Permit No. 163

Spring and Summer 2014 Member Events

MANY LOTUSLAND EVENTS are open to nonmembers, so please let your friends and neighbors know about the great activities we offer.

Ongoing until May 17

Enemy of the Average Exhibition
On view in the Lotusland pavilion.

Friday, April 4

4:30 TO 6:30 PM

The Lotus Society: Behind the Scenes
Tour of Enemy of the Average

Saturday, April 26

Sunday, April 27

11:00 AM TO 5:00 PM

Earth Day: Lotusland at Santa
Barbara's Earth Day Celebration

Saturday, May 3

2:30 TO 5:30 PM

Behind the Scenes Tour

Please call 805.969.9990 to register.

Saturday, May 10

1:30 TO 4:00 PM

Mother's Day Tea and Tour

See details on page 5. Please call
805.969.9990 to register.

Saturday, May 17

3:00 TO 6:00 PM

Cacti and Cocktails

See details on page 5. Please call
805.969.9990 to register.

Saturday, May 31

12:00 TO 4:00 PM

Members' Family Day

See details on pages 8 and 9.

Saturday, June 7

4:00 TO 6:30 PM

Summer Twilight Tour

See details on page 11. Please call
805.969.9990 to register.

Sunday, June 8

11:30 AM TO 2:00 PM

The Lotus Society: Annual Recognition
Luncheon

Saturday, June 21

4:00 TO 8:00 PM

Summer Bounty: A Lotusland
Food and Wine Fête

See details on page 10.

Saturday, July 12

2:00 TO 5:00 PM

Lotusfest!

See details on page 4. Please call
805.969.9990 to register.

Sunday, July 27

4:00 TO 8:00 PM

Lotusland Celebrates

See details on page 11.

Saturday, September 20

2:00 TO 5:00 PM

Exceptional Plants: Auction and Sale

Go to www.lotusland.org for more
information.

Tours

Tours are offered at 10:00 AM and
1:30 PM, Wednesday through Saturday
from February 16 and November 15.
Call 805.969.9990 for reservations.

*Printed on recycled and recyclable paper
with vegetable-based inks*