



LOTUSLAND

NEWSLETTER FOR MEMBERS ♦ VOLUME 20 NO. 2 ♦ SPRING 2011

Lotusland's Fauna

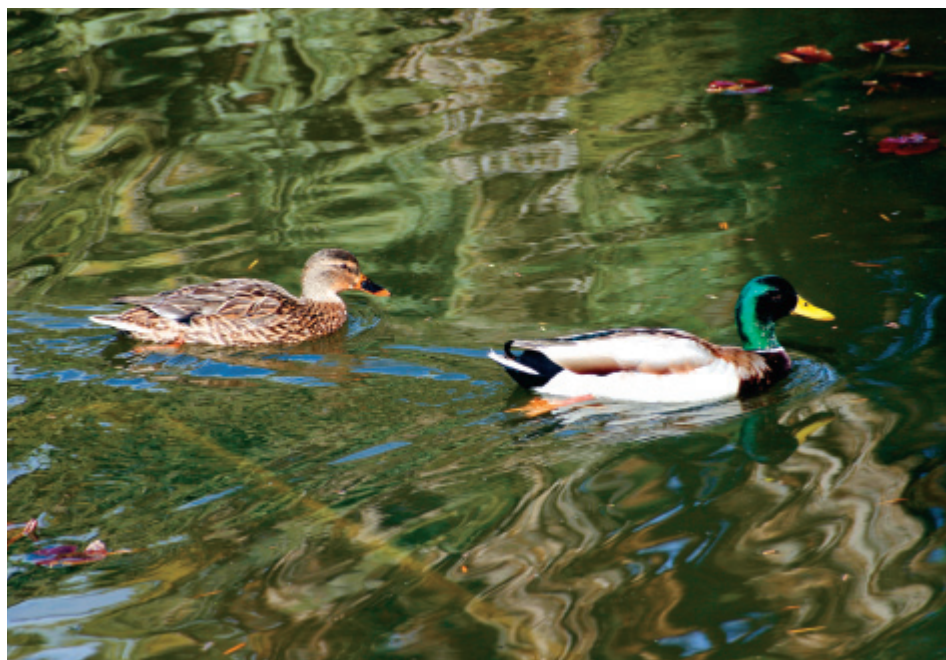
BY VIRGINIA HAYES

LOTUSLAND IS A REFUGE of green for human visitors from near and far who come to experience the vibrant, yet calming energy that comes from being surrounded by plants. Those visitors may also be charmed by the songs of myriad birds that flit through the landscape, but they are most likely unaware of the many other native creatures that make Lotusland home.

The high level of diversity in animal life at Lotusland can be attributed to its location near the chaparral on the foothills behind us and also to the size of the property. A 37-acre green space can support more fauna than the smaller properties nearby. Undoubtedly, it is also a result of the effort staff has made over the past 15 years to eliminate harmful chemical treatments for pests and diseases of the plant collections and to switch to organic fertilizers. Removing toxic elements from the landscape has allowed the natural inhabitants to multiply, creating an ecosystem that supports numerous animal species.

This diverse fauna starts, of course, with the smallest members. Insects now thrive everywhere in the garden because insecticides are no longer applied. By using compost and organic mulches, including compost teas, improved soil conditions also support more insects and other invertebrates, such as spring-tails, millipedes, earthworms and even smaller fauna. The larger ones feed birds and moles that in turn sustain the carnivorous raptors and mammals. Honeybees, in danger throughout much of the country, have made several hives in trees around the garden, including one of the large weeping euphorbias near the house. At least a dozen species

Continued on page 2



VIRGINIA HAYES

Mallard ducks (Anas platyrhynchos) are classed as migratory, but several mated pairs make Lotusland their year-round home, occasionally nesting and hatching ducklings in the underbrush.

IN THIS ISSUE

Lotusland's Fauna	1	Annual Meeting	10
Director's Letter	3	Gone Opening Reception	10
LotusFest	4	Cacti and Cocktails	10
New to the Collections	5	Solstice Twilight Tour	10
<i>Lotusland's Fruit Orchard</i>		Lotusland Welcomes Three Talented New Trustees	11
Garden Tours with Virginia Hayes	5	Lotusland Celebrates	11
Lotusland Has a Brand-New Website	5	<i>Dreams of a Diva</i>	
Mother's Day Tea and Tour	5	Thank You to Our Garden Stewards and Garden Guardians	11
The Lotus Society	6	Volunteer Profile: Jim Scorso	12
Horticultural Happenings	7	<i>A Garden Steward</i>	
<i>Winter and Spring Projects</i>		Behind the Scenes Tour of Hearst Castle	12
Brand-New Member Benefit	7	Help Make Lotusland's Wishes Come True	13
Members Family Day	8		
<i>An Old-Fashioned Picnic at Lotusland</i>			

The LOTUSLAND
NEWSLETTER FOR MEMBERS
is published by
Ganna Walska Lotusland Foundation
695 Ashley Road
Santa Barbara, California 93108
805.969.3767 • www.lotusland.org

BOARD OF TRUSTEES

Larry Durham, President
Andrew Chou, Vice-President
Ian M. Fisher, Secretary
Michael Mayfield, Treasurer
Marc Appleton
Geoffrey Crane
William M. Daugherty
Sherry Gilson
Dawn Lafitte
Jill Levinson
Chapin Nolen
Connie Pearcy
Eileen Rasmussen
Tim Schiffer
John Tilson
Susanne Tobey
Lynda Weinman
Peggy Wiley

Merryl Brown
Robert J. Emmons
Arthur R. Gaudi
Kisa Heyer
Anne Jones
Michael Towbes
Carol L. Valentine
Lifetime Honorary Trustees

Gwen Stauffer, M.S.
Executive Director

Steven Timbrook, Ph.D.
Director Emeritus

Anne Dewey, CFRE
Director of Development

Deanna Hatch
Director of Communications

Virginia Hayes, M.A.
Curator of the Living Collection

Michael Iven
Director of Grounds and Facilities

Dorothy Shaner
Director of Public Programs

Karen Twibell
Director of Operations

Printed by Jano Graphics
Lindse Davis, Design

Printed on recycled and recyclable paper
with vegetable-based inks

Mission Statement

To preserve and enhance the spectacular collections of exotic plants and the historic Montecito estate of Madame Ganna Walska, to provide public access to their remarkable beauty and diversity and, through interpretation of these collections, to foster increased knowledge and appreciation of the importance of plants and the need for their conservation.



MICHAEL IVEN

Barn owls (*Tyto alba*) nest in tree cavities or in buildings (barns!), but will also use nest boxes such as this one if they find them to their liking. Several pairs have taken up residence at Lotusland. They are very helpful in keeping rodent populations under control.

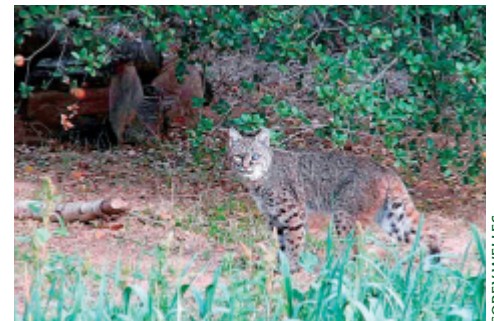
Continued from page 1

of butterflies and moths have been identified in the garden, and monarchs regularly visit the milkweeds in the butterfly garden to lay eggs. Robust populations of myriad small flies, mosquitoes and beetles feed the bats, birds and others.

By nature secretive, many of the larger animals often only emerge from their hiding places as night approaches and vanish again when the sun rises. Nocturnal raccoons, skunks, opossums and, yes, rats and rabbits forage among the collections by night. Coyotes that den in nearby barrancas make regular visits to hunt, and owls that nest in the palms help to control pest populations. Less frequent a visitor is a bobcat that slinks through the garden often enough that we are no longer surprised to see it. Even the very shy and seldom-seen gray fox has been spotted on occasion. Without the natural food chain that these animals form, the garden would be overrun with pests. Their presence is not only an indication of the efficacy of organic garden maintenance, but a necessity to keep it functioning.

In a testament to their adaptability, these native animal species take advantage of the exotic plants at Lotusland in many interesting ways. The California myotis bat roosts in the clumps of

Spanish moss (*Tillandsia usneoides*) in the bromeliad garden. Acorn woodpeckers nest in cavities in several queen palms (*Syagrus romanzoffianum*) and during the summer dip the sweet nectar from the flowers of the giant bird of paradise (*Strelitzia nicolai*). Migrating wood ducks and hooded mergansers rest and feed for days or even weeks in the Japanese garden pond. Barn owls mate and raise their young on the property, as do red-shouldered hawks, choosing from several non-native trees for their nest sites as well as a couple of nest boxes that have been erected. Hooded orioles fly north from their winter-feeding sites in Mexico to weave their nests on the underside of palm leaves at Lotusland. Dozens of baby California quail scurry through the garden every spring under the watchful eyes of their parents, who



COREY WELLES

The spots and stripes on bobcats (*Lynx rufus*) make them difficult to see, even when they aren't in hiding.

VIRGINIA HAYES



This swarm of honeybees (*Apis mellifera*) has left the main hive and is clustered together while scout bees search for a suitable new home.

perch on top of the hedges nearby.

Crows eat just about everything, so it is no wonder that they are drawn to Lotusland. They comb the lawn looking for insects and worms as well as perch in the dragon tree (*Dracaena draco*), consuming its fleshy fruits. Raccoons, kingfishers and herons fish in the water garden and Japanese garden pond, and mallards root for insects and plants in the ponds, as well as for the occasional snail or slug on land. Squirrels enjoy the native acorns, but also feed on the coquitos (miniature coconuts) of the Chilean wine palm (*Jubaea chilensis*) and other non-native seeds. Hummingbirds visit flowers of bromeliads from South America and aloes from Africa and nest in cordylines native to Australia.

Reptiles and amphibians, though few in species diversity, are abundant in numbers. Springtime nights are raucous with the mating calls of the tree frogs (probably both Northern Pacific and

California tree frogs) that return to the ponds to mate and lay their eggs. At least two types of small lizards, blue belly (also known as the western fence lizard) and California alligator lizards, scurry through the drier parts of the garden. A few gopher snake sightings a year by staff members assure us that they are in attendance as well. The turtles in the ponds are all transplants, but every so often one arrives overland from who knows where to join the ranks. Female turtles regularly walk dozens of yards away from the ponds to lay eggs in the mulched areas, and at least some of the hatchlings survive the hazards of desiccation and predation to return to the pond.

While Lotusland is a botanic garden that focuses on its rare and treasured plant collections, it also celebrates the animals that make it their home. You may not see them, but they are an important part of our designed environment.

Director's Letter

SPRING HAS BEEN SLOW in coming to Santa Barbara. It seems that winter did not want to give up its grip, with cooler than normal temperatures and nearly twice the amount of average precipitation, keeping everyone longing for the warm and sunny days we expect from our little place in paradise. Fortunately, most of the plants at Lotusland not only adapt to this extra moisture, but they thrive. Our years of garden bed renovation projects, coupled with our ongoing sustainable horticultural practices that has encouraged a very healthy community of micro-organisms in the soil, guarantee that the plants can adapt to heavy rain events.

Many of the succulents at Lotusland blossom best when we have plenty of rain. These plants are native to very hot and arid ecosystems, so a winter season with heavy precipitation is the signal for these plants to bloom. *Aloe plicatilis* (fan aloe), native to South Africa and located in our aloe garden, have more flowers on them than we have seen in years—stunning! The large *Doryanthes palmeri* (spear lily) in our Australian collection by the Visitor Center has numerous spikes with huge clusters of scarlet flowers. Some plants in the suc-

culent garden sprout leaves and flowers when drenched with winter rains, only to lose both as the dry summer arrives.

While we enjoy these extra winter flowers, the rain is not always friendly to the gardens. Some larger and older cactuses become wobbly in the saturated soils and tumble over. This year, we lost one venerable old cactus that Madame Walska had planted on the main drive, and we lost a large cactus from the Dunlap collection in the cactus garden. Throughout the year, we assess all of the large plants, including the trees, for their vulnerability and potential to topple during these periods of soil saturation. Those deemed vulnerable are staked and wired to prevent them from falling. But sometimes plants with no indication of vulnerability are the ones to go.

Fortunately, Lotusland's gardens escaped any serious damage from the rains and floods, unlike the heavy flood of 1995 that devastated entire sections of the garden and tumbled a section of the pink perimeter wall. For the rest of that spring, staff spent much time and money to put the gardens back together again. This year we were prepared for a flood disaster, thanks to a gift generously given to Lotusland by the late Carol



RICK CARTER

Gwen Stauffer

Valentine. Her support for "the unsexy projects" enabled us to build a comprehensive drainage system that captured all of the floodwaters on the edges of the Lotusland property and to move all of the water safely into the storm drain, preventing any overflow into the surrounding streets. Staff and contractors worked throughout 2010 to complete this project. As a result, the gardens are intact, still gorgeous and ready for visitors this spring season. We hope you will come out to enjoy the ebullient blooms induced by the rains, and celebrate Lotusland's constant beauty!

Warm regards,
Gwen L. Stauffer

LotusFest!

SATURDAY, JULY 16

2:00 TO 5:00 PM

Please join us for this celebration of the spectacular flower that is Lotusland's namesake.

July is peak blooming season, and guests will have the opportunity to view these uniquely beautiful flowers while enjoying a relaxing afternoon at this casual, fun event.

Enjoy these afternoon delights:

Wine tasting from Santa Barbara County's premier vintners

Entertainment by She's My Band

Delectable hors d'oeuvres

Lotus lore galore

Lotus viewing

Lotus flowers open during the day and close at night. Prime viewing time during LotusFest will be until 3:00 or 4:00 PM, depending upon weather conditions, so make sure to allow time to savor the spectacular view of lotuses in bloom.

Please note that this is the only notification of this event prior to the Summer newsletter.

To register for this fun and enlightening event, please use the coupon on page 15.

NEW TO THE COLLECTIONS

Lotusland's Fruit Orchard

SPRINGTIME VISITORS to Lotusland are often charmed and intrigued by the lovely flowers of the fruit orchard. These deciduous trees are clearly visible from the olive allée at all times of the year, but it is in spring when the various peaches, plums, apples and pears are in flower that the orchard becomes a show stopper. There are just over 100 trees, and most of them bloom within a month or so of each other, usually beginning in late January and ending in mid-March.

Periodically, older trees are removed and new ones planted. The new trees may be new varieties or simply replacements for tried-and-true favorites. This year two peaches, 'Eva's Pride' and 'Santa Barbara', were planted, a 'Dorsett Golden' apple, two new cherry varieties for Southern California, 'Minnie Royal'

and 'Royal Lee', and three cultivars of figs were added to the mix.

Figs are a gourmet treat to many people. Since they do not store or travel well, they are ideal choices for a home orchard. Many of them can be pruned to remain small, and some are even suited for container growing. The newest additions to the Lotusland orchard are 'Celestial', 'Violette de Bordeaux' and 'White Genoa'. All have reddish or pink flesh, but their skin color varies from pale pinkish in 'Celestial' to deepest purple for 'Violette de Bordeaux' and apple-green on fruits of 'White Genoa'. The flavor of figs doesn't vary much from variety to variety, but 'Violette de Bordeaux' is claimed to carry a large hint of berry jam in its flesh to make it a stand-out. It will be several years before more



VIRGINIA HAYES

Delicious peaches in midsummer will follow this beautiful spring floral display.

than a sampling is ready for consumption, but staff and volunteers will be eager to give them a taste.

—Virginia Hayes

Garden Tours with Virginia Hayes

SATURDAY, APRIL 30 • 1:00 PM TO 4:00 PM (GATES OPEN AT 12:45 PM)

SATURDAY, JUNE 18 • 9:30 AM TO 4:00 PM (GATES OPEN AT 9:15 AM)

VISITING OTHER PEOPLE'S gardens has a long tradition, especially in Santa Barbara. Pearl Chase organized such community-building events for years in her heyday. The urge to peek behind the wall or peer over the hedge is alive in many. Whether one is looking for inspiration or just enjoying the creativity of the designer, it is a pleasurable pastime. Curator Virginia

Hayes will organize and lead two excursions this spring to do just that.

In a departure from the norm, the first garden tour will visit several gardens, in the afternoon only, on Saturday, April 30. At the tour's end, guests will relax with a lovely glass of wine and snack on delicious hors d'oeuvres. The gates open at 12:45 PM, and the coach leaves Lotusland at 1:00 PM.

The second tour on Saturday, June 18 is a full day of enjoyment. It starts with the gates opening at 9:15 AM and departs from Lotusland at 9:30 AM. A tasty lunch midday is included.

Both tours return to Lotusland by 4:00 PM. These tours are popular and will fill quickly.

Please use the coupon on page 15 to reserve a space.

Lotusland Has a Brand-New Website

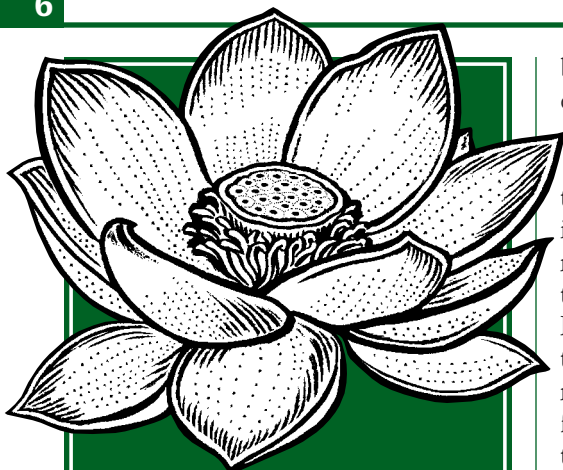
WE ARE VERY PLEASED with our beautiful new website—check it out at www.lotusland.org. The new site is very easy to navigate and is full of new information. It has a content management system that allows staff to update information easily—that was not the case with our former website. We needed a "webmaster" to keep it current, and we were so fortunate to have found one in **Norm Burr**. He graciously volunteered his time and talent as our webmaster since early in 2007.

Thank you, Norm—we couldn't have done it without you!

Mother's Day Tea and Tour

SATURDAY, MAY 7 • 1:30 TO 4:00 PM

One of our most popular events is our annual Mother's Day Tea and Tour. Don't miss this opportunity to spend the afternoon before Mother's Day touring the garden and enjoying tea, refreshments and music on our pavilion patio and main lawn. Explore the garden on your own, or reserve a docent-led tour. This is the perfect treat for someone special in your life! Please use the coupon on page 15 to register.



The LOTUS SOCIETY

JOHN CASALY AND LOUISE PARENT

JOHN CASALY AND LOUISE PARENT, both hailing from New England, each found their way, and ultimately each other, in New York City where they established their careers as attorneys. Louise and John reside on the "Museum Mile" of Fifth Avenue, and while they enjoy the easy access to some of the best cultural opportunities in the world, they have focused their personal time, energy, passion, and resources in service to others.

"We feel it is important for us to give back to our community," Louise explains. To that end, John and Louise are very busy people! Louise served on the board of her alma mater, Smith College, and currently serves on the

board of A Better Chance, a nonprofit organization that creates educational opportunities for talented students of color, and Cold Spring Harbor Laboratory, a nonprofit research and education institution working to find cures for major human illnesses. Among other things, John serves on the board of Fountain House, a nonprofit organization that helps men and women with mental illness establish meaningful lives for themselves and contribute their talents to their communities.

Louise and John still find time to relax on weekends at their home in Locust Valley, Long Island, with their golden retriever, Hunter, and several years ago, after visiting Santa Barbara on many occasions, they decided to buy a west coast retreat in Montecito. "When we told our friends about it," Louise says, "[garden writer] Suzy Bales told us, 'You have to go to Lotusland!'" As luck would have it, their former neighbors from back east, Tex and Barbara Williams, had moved to Ojai years before and knew all about Lotusland. Barbara, who is now a Lotusland docent and Lotus Society member, welcomed John and Louise to their west coast neighborhood by giving them their first tour of Lotusland. Louise was moved by the lotuses growing in the water garden, saying, "We saw them at the right time—they were spectacular."

"Lotusland's natural beauty and rich history make it unique and compelling," Louise tells me. "All our friends from New York visit us in Montecito, and we always bring them to Lotusland." Louise loves the blue garden, the iconic color-themed garden at the heart of

Lotusland, for its "color and ebullience." John told me he is a fan of the cactus garden, saying, "I drive by Lotusland often, and the cactuses seem to jump the walls. I always look for them."

John and Louise agree that Lotusland is a remarkable gift of Madame Walska's personal vision to create a beautiful place for the community to enjoy. In talking with John and Louise, it is clear they have their own personal vision for how they would like to make a better world. John and Louise became members of *The Lotus Society*, not only because they love the gardens. Louise explains, "We especially like Lotusland's education programs." We are grateful for their additional support of our Fourth Grade Outreach Program, in which every fourth grader in Santa Barbara, Goleta and Carpinteria learns botany and the importance of plants in their lives through classroom lessons that are put to practice during field study sessions at Lotusland.

"Lotusland is world famous," Louise tells me, "and I hope the community appreciates what is right next door to them." John adds, "We are always eager to support local organizations in all our communities, and we are very glad to have been introduced to Lotusland."

—Gwen Stauffer



NEW MEMBERS

THANK YOU TO THESE additional new members for their generous support.

Sonja Lane
in Memory of Samuel Lane

Kathleen D. Schepanovich
in Memory of Petar Schepanovich

Wyatt Family

Members of *The Lotus Society* have each made a gift or bequest of \$10,000 or more to Lotusland's Endowment. Names of *The Lotus Society* members are engraved on the Wall of Honor, which is located at the Visitor Center at the end of the Australian tea tree arbor.

To learn more about *The Lotus Society*, please call Anne Dewey, Lotusland's Director of Development, at 805.969.3767, extension 105.



John Casaly and Louise Parent

HORTICULTURAL HAPPENINGS

Winter and Spring Projects

THE GARDEN is in a constant state of flux, and maintenance tasks are ongoing. Recent projects are described below.

MAIN DRIVE RENOVATION

IN EARLY FEBRUARY, Lotusland staff took advantage of a week with no predicted rain to renovate the decomposed granite (DG) paving on our main drive. Since its original installation in 1999, annual maintenance of the main drive consisted of repairing ruts caused by winter rains and adding a few drain boxes to catch and slow runoff during downpours. We were past due for a major renovation.

After lightly rototilling the old material, the crew applied, hand-graded and compacted 78 tons of stabilized DG over the 18,000 square feet of the main drive. The stabilizer premixed into the DG is a non-toxic organic binder that allows percolation of water, but binds the DG particles together to prevent ruts and washouts. The renovation

held up well after a couple of late winter storms.

PLANT HEALTHCARE: COMPOST

MARCH SIGNALLED A SHIFT in the focus of grounds and maintenance staff as plant healthcare guidelines were put into practice. Winter pruning, pathway and road repairs, planting natives, irrigation system upgrades and late winter weeding led into springtime activities. Compost tea brewers and spray rigs were serviced, horticultural materials were delivered and modifications to last year's maintenance guidelines were discussed prior to the first application of compost tea and nutrients on March 7.

Mulch, compost and compost tea are major components of Lotusland's horticultural program, and the production of good compost is key to plant health. Green waste material from the garden is shredded before being incorporated into compost piles. The majority of the mature compost is returned to the planting beds to add beneficial organisms, improve soil structure and provide foods for beneficial bacteria, fungi, nematodes, protozoa and other microarthropods. One pile is specially constructed and managed to provide compost used for making compost tea. A variety of ingredients including wood chips encourages a diverse selection of organisms to inoculate soil and plant surfaces with compost tea.

—Michael Iven



MICHAEL IVEN

After applying and grading the dry decomposed granite, it was thoroughly watered and then rolled.



GREG KITAJIMA

The flail mower attachment shreds green waste material from the garden before it is incorporated into compost piles.

INVASIVE SPECIES

NOXIOUS WEEDS HAVE COST California agriculture millions of dollars each year. Our coastal ecosystem is at risk every time a new weed enters our mild coastal environment. Recently a new and very invasive weed, *Euphorbia terracina* (carnation spurge), appeared at Lotusland. It has destroyed huge areas of California rangeland, survives in sun or shade, wet or dry, and seeds prolifically.

The Agricultural Commissioner's office identified the weed for us, and gardening staff immediately began the task of eradicating it. We are carefully monitoring any new sprouting of this invasive weed.

—Corey Welles

Lotusland Plant Healthcare Coordinator

For more information, please go to the following websites:

California Invasive Plant Council
http://www.cal-ipc.org/ip/management/plant_profiles/Euphorbia_terracina.php

County of Santa Barbara
Agricultural Commissioner's Office
<http://www.countyofsb.org/agcomm/wma.aspx?id=22572>

TAKE ADVANTAGE OF THIS Brand-New Member Benefit

THANK YOU to the following generous nurseries and garden retail stores for offering a discount to Lotusland members. Don't forget to bring your membership card when you shop.

Australian Native Plants
Baron Brothers Nursery
bō-tan-ik

Eye of the Day
Green Thumb Nursery
(5 LOCATIONS)
Island View Nursery

Knapp Nursery
Laguna Nursery
Seaside Gardens

Additional identification may be requested. Discounts vary and are subject to change without notice. Visit www.lotusland.org for details including phone numbers, addresses and amount of discount.



COREY WELLES

Euphorbia terracina: Be Afraid, Be Very Afraid is the title of a National Parks Service report on this noxious weed.

Members' Family Day • An Old

SATURDAY, MAY 14

Lotusland wishes to thank you, our members, for your support by hosting our 14th

Generously S
Thomas & Nancy Crawford, Jr.

Activities w



COURTESY PHOTO



COURTESY PHOTO



KAREN TWIBELL

PHOTOS BY RICK CARTER

Doug Hoover performing two magic shows in the thea
 Face-painting, games, activities and crafts from the garden for
 Dress up in costumes and take home a free old-fashioned souvenir photo t
 Live music by Spencer the Gardener o
 Bill Malis will create an ice scu
 Last chance to see

Garden Admission to Members' Family Day is Free!

But you must reserve space for your family by mailing the reservation form,
 along with a non-refundable valet parking fee of \$15.

Due to the popularity of this event and to allow as many members as possible to attend,

Lotusland requests ONLY ONE VEHICLE PER MEMBERSHIP.

No phone reservations, please. Please reserve early, as this event always quickly fills to capacity.

Bring your own picnic or pre-purchase a lunch catered by Rincon Catering.

The \$14.00 adult lunch includes a watermelon wedge, old-fashioned potato salad, a small bag of chips
 and your choice of an oven-fried chicken sandwich served with honey mustard on specialty bread
 or a chilled grilled peppers and squash sandwich with sprouts and hummus on specialty bread.

The \$7.50 child lunch includes a watermelon wedge, a small bag of chips and your choice
 of an oven-fried chicken half-size sandwich served with honey mustard on specialty bread
 or a peanut butter and grape jelly whole-size sandwich on white bread.

You may add to, cancel or change your lunch order through May 2.

A limited number of picnic blankets will be available, or you may bring your own.

Complimentary juice, soft drinks and water are available all day.

In our continuing effort to minimize our use of plastics, water dispensers and cups will be available to fill your own container.
 "Lotusland" stainless steel water bottles are available for \$10 in the Garden Shop.

Complimentary ice cream cones will be served on the main house patio from NOON to 2:00 PM.



Old-Fashioned Picnic at Lotusland

• 10:00 AM TO 4:00 PM

Our annual Members' Family Day. Everyone is invited, especially children of all ages!

Sponsored by:
in Honor of Their Grandchildren

will include:



at the garden • 11:15 AM TO NOON AND 1:30 TO 2:15 PM
children and adults on the main lawn • 10:00 AM TO 4:00 PM
taken by photographer extraordinaire Bob DeBris • 10:00 AM TO 4:00 PM
on the main lawn • NOON TO 1:30 PM
sculpture beginning at 2:30 PM
the giant ants!

Please return this reservation form to: Ganna Walska Lotusland, Attn: Member Events, 695 Ashley Road, Santa Barbara, CA 93108.
Your confirmation, parking pass and a map will be mailed to you upon receipt of your reservation form and payment.

Bring your own picnic or order prepaid lunches below. Your lunch tickets will be mailed with your confirmation.

Reservation Form

Member Name(s) _____ Total no. in 1 car _____ Phone no. _____
Address _____ No. of adults _____ No. of children 3 to 12 _____
_____ No. of teens _____ No. of children 2 and under _____

Non-refundable Valet Parking Fee:
Enclosed is our family's \$15.00 valet parking fee = \$ 15.00

We prefer to bring our own picnic ☐ **Or please order:**

Adult Lunch
Chicken Sandwich \$14.00 × _____ (NO.)= \$ _____
Vegetarian Sandwich \$14.00 × _____ (NO.)= \$ _____
Child Lunch
½ Chicken Sandwich \$7.50 × _____ (NO.)= \$ _____
PB&J Sandwich \$7.50 × _____ (NO.)= \$ _____
TOTAL ENCLOSED = \$ _____

Payment Method:
☐ Check enclosed payable to Ganna Walska Lotusland
☐ VISA ☐ MasterCard ☐ AMEX
Card Number _____
Exp. Date _____ Security Code _____
Signature _____

Don't delay mailing your reservation form!
You may add to, cancel or change
your lunch order through May 2.

Annual Meeting

2010 ACCOMPLISHMENTS HIGHLIGHTED

PRESIDENT LARRY DURHAM welcomed guests to the 2011 Annual Meeting. Vice President Andy Chou thanked outgoing Trustees Jane Copelan and Mason Farrell for their many contributions during their years of service. Jane joined the board in 2007, was co-chair of the Lotus Society Committee for three years and lent her expertise to other committees as well. Mason has been a board member since 2001 and, among his many leadership roles, served as Lotusland's president in 2008 and 2009. We are pleased that both plan to continue to be active Lotusland supporters.

Three new Trustees—Connie Pearcy, Eileen Rasmussen and Lynda Weinman—were introduced and welcomed. They are profiled on page 11.

Treasurer Michael Mayfield presented a financial report, Executive Director Gwen Stauffer gave a State of the Garden address and Curator Virginia Hayes presented a program highlighting Lotusland's accomplishments in 2010. A reception in the pavilion followed the program.



NELL CAMPBELL

Lifetime Honorary Trustee Kisa Heyer, Julie Farrell and outgoing Trustee Mason Farrell are pictured at the 2011 Annual Meeting. A Trustee since 2001, Mason served as president for two years.



NELL CAMPBELL

Gone

Opening Reception

BOARD PRESIDENT Larry Durham, Patricia Durham, artist Penelope Gottlieb and Rosalind Amorteguy were among the guests at the opening reception for *Gone*. Ms. Gottlieb describes her botanical paintings as “a visual eulogy for lost plant life.”

The stunning exhibition is on view in Lotusland's Pavilion through April 23 and is part of our regularly scheduled docent tours—or enjoy it at your own pace on a self-guided tour. For reservations, please contact Lotusland's visitor services office at 805.969.9990 or reservation@lotusland.org.

Cacti and Cocktails

SATURDAY, JUNE 11

3:00 TO 6:00 PM

Stroll in the cactus garden and enjoy the magnificent blooms. Take advantage of this opportunity to enjoy the cactus garden—and other gardens as well—in the late afternoon light.

You may explore the garden on your own or request a docent-led tour. Specialty cocktails and hors d'oeuvres will be served from 4:00 to 5:00 PM.

Please use the coupon on page 15 to register.

BILL DEWEY

Solstice Twilight Tour

SATURDAY, JUNE 25

3:30 TO 6:30 PM

Enjoy the longer days of summer and celebrate the Summer Solstice at this special Twilight Tour.

Hors d'oeuvres and wine will be served on the geranium terrace from 4:30 to 5:30 pm.

You and your guests can choose to reserve a docent-guided tour or explore the garden on your own.

To register, please use the coupon on page 15.

Lotusland Welcomes Three Talented New Trustees



CONNIE PEARCY

CONNIE PEARCY IS A 6th-generation Texan from Dallas. She and her husband, John, bought a home in Santa Barbara in 1999 and divide their time between Dallas and Santa Barbara. Connie has served on many boards and committees for years in Dallas, but Lotusland is her first in Santa Barbara. She is also on the Girls Inc. 100 luncheon committee. Although she and John have their roots in Dallas where John is involved in real estate development, their plan is to be in Santa Barbara full-time. Connie says that after discovering Lotusland, they were hooked and now choose to support the garden as one of their major loves in Santa Barbara.



EILEEN RASMUSSEN

EILEEN RASMUSSEN was born in New York and raised in Portugal and the Napa Valley. An early childhood in Portugal cemented her love of the gardens of Europe. She attended school in Napa and college at the University of Southern California. In 1993, she moved to Santa Barbara to marry her husband Alex, an Industrial Designer, who designs and manufactures products that are exported internationally. Eileen was an active member of the Junior League of Santa Barbara for 11 years and continues today as a sustaining member on the board of directors. She also serves on the Santa Barbara Contemporary Arts Forum Board of Directors.



LYNDA WEINMAN

LYNDA WEINMAN is the co-founder of lynda.com, one of today's pioneering companies in online education. Lynda began her career as an individual teacher, frustrated by the incomprehensible manuals that taught computer skills, and created her own brand with her husband that branched into a company with 500+ employees and contractors combined. The company relocated to Carpinteria in 2009 and is growing 40 to 60% per year, even in a down economy. Lynda and her husband, Bruce Heavin, moved to Montecito in 2010. Lynda also serves on the board of the Santa Barbara International Film Festival.

PHOTOS BY NELL CAMPBELL



SAVE THE DATE

Sustainer \$10,000
(ten tickets, five VIP parking passes
and a Sustainer gift)

Contributor \$7,500
(ten tickets, five VIP parking passes
and a Contributor gift)

Benefactor \$5,000
(ten tickets, a VIP parking pass
and a special gift)

Patron Table Host \$3,750
(ten tickets and a VIP parking pass)

Patron \$1,000 (two tickets)

Tickets \$300 each

Invitations will be mailed in mid-June. Remember, this event always sells out! Please contact Anne Dewey, Director of Development at 805.969.3767, extension 105 for more information.

Thank You to Our

GARDEN STEWARDS (GARDEN SPONSORS)

Mr. & Mrs. Larry Durham
Mr. & Mrs. Frederick W. Gluck
William & Kristin Loomis
Jack Mithun & Mercedes Millington
Ms. Celeste Scheinberg &
Conor & Madelynn Scheinberg
Lynda Weinman & Bruce Heavin

GARDEN GUARDIANS (GARDEN BENEFACTORS)

Mr. Jack Baker, Wallis Foundation
Mr. & Mrs. Thomas Crawford, Jr.
Staffan & Margareta Encrantz
Mr. & Mrs. Robert Feinberg
Ms. Cyndee Howard
Mr. & Mrs. Jon B. Lovelace
Mr. & Mrs. John K. Pearcy
Mrs. Andy Pearson
Mr. & Mrs. Harold Simmons
Ms. Beverly Smaniotto
Mr. & Mrs. Gary Tobey
Peter & Leslie Tolan

Volunteer Profile: Jim Scorso

A GARDEN STEWARD

VIRGINIA HAYES



Jim Scorso

JIM SCORSO is a docent “returnee.” Originally a member of our 1995 docent class, Jim took a sabbatical and pursued other interests after several years of giving tours. But the allure of Lotusland, and some urging from other docent friends resulted in his returning and signing up for our 2009/2010 docent training. We’re so glad he did!

In addition to the botanical knowledge he picked up during docent training, Jim enjoyed learning the history of the property, the life and times of Madame Walska and how Lotusland evolved from the era of nurseryman Kinton Stevens to the garden that Madame developed. “What I remember most about my first docent training classes are stories about the men who worked closely with Madame in designing and maintaining the garden. I remember listening to

Ozzie Da Ros recount stories about working with Madame. I so enjoyed encounters with Frank Fujii, who dedicated his life to the Japanese garden, which he helped create. Bruce Van Dyke, whose interest was the orchard, was another of the men who were part of the day-to-day life at Lotusland. They added a richness—a kind of mystique—to my experience with Lotusland.”

Jim worked at Santa Barbara Research Center as a chemist, test engineer and program manager for 35 years. At the time, General Motors owned the company and had a number of government contracts. Jim worked in the R&D section developing sensors for infrared imagers, which were used in weather and surveillance satellites, as well as missile seekers.

After officially retiring, Jim tackled restoring the landscaping of a one-acre property he acquired in 1990 and had allowed to “go native” because of the severe drought in the late 1980s. Jim brings a lifetime of gardening experience with him. His father had always cultivated gardens—“big ones!”—and Jim followed suit. Jim now grows tomatoes, strawberries, blackberries, basil, chives and other herbs. Twenty fruit trees also occupy his garden, as do 150 roses including many David

Austin varieties. The roses enable him to have a regular supply of bouquets for his wife.

When he isn’t tending his bountiful garden, Jim plays tennis and enjoys woodworking, photography and traveling. Jim and his wife, Jean, have been married 50 years and have a son, a daughter and several grandchildren. Jim currently is on the board of directors of La Cumbre Mutual Water Company and is a member of The History Forum, a group that meets informally each month.

Describing his experience as a Lotusland docent, Jim says, “I always enjoy walking through the gardens to see what is new. But the real enjoyment is watching people’s jaws drop when they see the gardens. It’s not always the same garden that amazes them. Sometimes it’s the agaves at the entrance. Another time, it will be the Japanese garden or maybe the cacti. It’s different for different people.” When asked if he had a favorite garden, Jim replied, “I love them all. Which one of your kids do you love the most?”

We’re so grateful that Jim decided to come back to Lotusland to share his love of gardening and the history of Lotusland with our visitors—“especially the kids!” Thank you, Jim.

—Jean Parry

Behind-the-Scenes Tour of Hearst Castle

TUESDAY, APRIL 26 • 8:30 AM TO 6:00 PM

EVEN IF YOU HAVE VISITED the magnificent 165-room estate known as Hearst Castle, you most likely have not had the opportunity to go behind the scenes with the Museum Director, Hoyt Fields. He has been a member of Hearst Castle’s staff for more than 30 years, and his wealth of knowledge about the castle is amazing. Mr. Fields promises many “surprises” for Lotusland members!

Noted newspaper tycoon William Randolph Hearst and Julia Morgan, the first prominent woman architect in

America, collaborated for 28 years on the creation of La Cuesta Encantada, or the “Enchanted Hill,” known today as Hearst Castle. The estate is surrounded by 250,000 acres of some of the most beautiful, unspoiled countryside in the state of California.

The motor coach leaves Lotusland at 8:30 AM. A gourmet box lunch from Omni catering will be served on arrival at the Visitor Center at Hearst Castle, and our tour begins at about noon. We arrive back at Lotusland at approximately 6:00 PM.

Space is limited. Please use the coupon on page 15 to register.



Hearst Castle at sunset is truly the “Enchanted Hill.”

COURTESY HEARST CASTLE®/
CALIFORNIA STATE PARKS

Lotusland Gratefully Acknowledges Donations

DECEMBER 2010, JANUARY AND FEBRUARY 2011

2010 GIFTS FOR THE GARDEN CARE OF THE GARDEN FUND

Ms. Sally Armour
Mr. Michael Furner in memory of Jean Furner
Mr. & Mrs. Robert C. Gregory
in honor of Chapin Nolen
Mike Iven & Roberta Bloom
John & Joyce Thurlow

EDUCATION FUND

Dr. & Mrs. David Buchanan
Mrs. Joyce Ginsberg

GENERAL FUND

Mrs. Rosalind Amorteguy
Appleton & Associates
Ms. Bernadette Bagley
Ms. Carol Beamer
Mr. & Mrs. Don Bennett
Mrs. Anne K. Borax
Mrs. John C. Bowen
Ms. Susan Bowey
Mrs. John S. Broome
Mr. George L. Burtness
Rey & Kristine Castillo, Village Modern Foods
The Roy E. Crummer Foundation
Tom Dennis & Chela Kleiber
Ms. Amanda Dunman
Mr. & Mrs. Larry Durham
in memory of Mrs. Annie L. Durham
Kimberly A. Favors
Ian M. Fisher & Michelle J. Montez
Ms. Marilyn Foreman
Mr. & Mrs. Frank Foster
Dorothy & John Gardner
Mr. Arthur R. Gaudi
Mr. & Mrs. Robert Gilson
Mr. & Mrs. Frederick W. Gluck
Dr. & Mrs. Leonard Grabowski
Mr. Stephen Harby
Ms. Marcia Harvey & Mr. Elliott Perkins
Ms. Deanna Hatch
Mrs. E. Walton Hedges
Corinne Hedrick
Mr. & Mrs. Steve Hicks
Ms. Amy Hilker
Mrs. Joanne C. Holderman
Mr. & Mrs. James H. Jackson
Mr. & Mrs. Palmer G. Jackson, Sr.
Mr. & Mrs. Palmer G. Jackson, Jr.
Mr. & Mrs. Si Jenkins
Mr. & Mrs. David Johnson
Mr. & Mrs. Don Johnson

Bill & Beth Jones
Mr. & Mrs. Herbert J. Kendall
Mr. & Mrs. John C. Kinneer
Mr. & Mrs. David Lafitte
Chris & Bambi Leonard
Mr. & Mrs. Neil Levinson
Mrs. Jacqueline Lunianski
& Ms. Rachel Kauffman
David MacCulloch & Hillary Hope
in honor of Ian Fisher & Arthur Gaudi
Mr. & Mrs. John Mackall
Mr. & Mrs. Michael Mayfield
Mr. James McPherson & Mr. Robert Eaton
Mr. James Merrick & Ms. Elizabeth Matthews
Mr. & Mrs. Jack Morrison
Mr. Eric Nagelmann
in honor of Lotusland's fabulous staff!
Mr. & Mrs. Charles Newman
Mr. & Mrs. Chapin Nolen
Mr. & Mrs. James C. Nonn
Gretchen & Jack Norqual
Northern Trust
Joanne & Edward Northrup
Louise M. Parent & John P. Casaly
Mrs. Jean Parry in memory of Stephen T. Parry
Mr. & Mrs. John K. Pearcy
Mr. & Mrs. Joseph Perena
in memory of Goldee Hecht-Meyer
Mr. Donald Philipp
Ted Plute & Larry Falxa
Mr. & Mrs. Russell Roberts
Mr. & Mrs. Gary Rollé
Mr. & Mrs. Rick Roney
Mr. & Mrs. Tim Schiffer
Mr. George Schoellkopf
Ms. Hilda P. Seibert
Mr. & Mrs. Edward Shea
Ms. Joanne Shiebler
Doug & Judy Shockey
in honor of Harlis Maggard
Mr. Leonard Somdahl
Dr. & Mrs. Norman Sprague, III
Mr. Bob Stanley & Ms. Cecilia Rodriguez
Ms. Gwen L. Stauffer
Mr. & Mrs. Christian Stepien
Mr. & Mrs. Richard Tavis
Ms. Louise E. Thielst
Ms. Melinda Thomas
in honor of Bob Montgomery
Dr. & Mrs. Bruce H. Tiffney
Drs. Steven & Jan Timbrook
Mr. & Mrs. Gary Tobey
Miss Shirley Toepfner

Mish Tworowski, Mish New York
Cindy Whelan
Mr. Dennis M. Whelan
Ms. Jennifer Wilbanks & Mr. Barry Polley
Peggy P. Wiley & Wilson Quarré
Dr. & Mrs. Philip Wyatt,
Wyatt Technology Corporation

PLANT ACQUISITION FUND

Mr. Harlis Maggard in memory of
David Roberson & George Applegate

LOTUS SOCIETY

Louise M. Parent & John P. Casaly

GRANTS

John Percival & Mary C. Jefferson
Endowment Fund
Louise M. Parent & John P. Casaly
Santa Barbara Foundation
John Swift, The Swift Family Fund

MATCHING GRANTS

GE Foundation as directed by Joseph Yzurdiaga
Morgan Stanley Charitable Spending Fund
as directed by Debra Galin

GENERAL DONATIONS

Ms. Carolyn Bordofsky
Mr. & Mrs. Aubert De Villaine
Mrs. Maurice E. Faulkner
Mark Fletcher & Tobias Meyer
in appreciation of tour
Nancy & Michael Gifford in support
of Penelope Gottlieb exhibit *Gone*
Tamara Jensen, I.D.O. Events Inc.
Winston & Susan McGee in appreciation
of docent Jill Vander Hoof

GIFT MEMBERSHIP DONORS

Ms. Whitney Alessandri
Mr. Mark Arrieta
Mrs. Jayne Blake
Mr. Carl Burton
Mr. & Mrs. Peter Chenoweth
Mr. Miullo Cutter
Gregg & Madelyn Foster
Bruce Giffin & Geoff Crane,
Giffin & Crane General Contractors
Ms. Nan Golden
Mr. Jim Koopmans
Miss Teresa Luger
Mrs. Richard Montanaro
Mr. Eric Nagelmann
Ms. Patricia O'Brien
Ms. Jeanne E. Sikoff
Mr. & Mrs. Bruce Van Dyke
Ms. Diana Wigton & Mr. Danny Lenahan

HISTORICAL ARCHIVES

Ms. Marla Daily
Ms. Hania P. Tallmadge

IN-KIND DONATIONS

Miss Sandra L. Church
Ms. Jane Gail Copelan
Sally Prime
Ms. Theodora Stephan, Global Gardens

WISH LIST SUPPORTER

Mr. Keith J. Mautino

IN MEMORY OF BARBARA SILVERANDER

Richard Bohlander & Rebecca Shepherd

Help Make Lotusland's Wishes Come True

TO HELP WITH ANY of these indispensable items, please call Anne Dewey, Lotusland's Director of Development, at 805.969.3767, extension 105 or email her at andewey@lotusland.org. Thank you!

DISHWASHER

We need a new high-end workhorse for all of our special events. \$630

WEED EATER

An essential tool for our gardeners. \$425

WATER GARDEN PLANTS

It's time to plant the water gardens! Lotuses: we need 20 @ \$440 (or 5 @ \$110) • Waterlilies: we need 40 @ \$480 (or 10 @ \$120)

Renewing Lotus Keeper (UPPER LEVEL) Members

DECEMBER 2010, JANUARY AND FEBRUARY 2011

GARDEN STEWARD (GARDEN SPONSOR)

Mr. & Mrs. Frederick W. Gluck

GARDEN CONSERVATOR (GARDEN PATRON)

Mrs. John C. Bowen
Mrs. Julie Brinkerhoff-Jacobs
Mr. Arthur R. Gaudi
Mr. & Mrs. Peter Muller
Dr. & Mrs. Philip Wyatt

GARDEN CULTIVATOR (LEVEL IV)

Tim Armour & Sandy Machemer
Mr. Victor K. Atkins, Jr. & Ms. Victoria Hartman
Keith & Heather Crummer
Ms. Lèni Fè Bland
Gregg & Madelyn Foster
Mr. David Gerber
Mr. & Mrs. Robert Gilson
Dennis McGowan & Rudi Van Brussel
Mr. & Mrs. James McIntyre
Mr. & Mrs. John Mozart
Mr. & Mrs. Warren Staley
Mr. & Mrs. John Tilson

GARDEN ADVOCATE (LEVEL III)

Ms. Patricia Aoyama & Mr. Chris Cleveland
Terry & Patty Bliss
Mr. & Mrs. Barton Clemens
Mrs. Robert B. Eichholz
Ray & Mary Evert
Mr. John Hayes
Mrs. Joanne C. Holderman
Ms. Nani Kurniawan
Mr. & Mrs. Craig Palonen
Mr. & Mrs. Michael Thompson
Ms. Elinor Van Oosten
Mr. & Mrs. James Warren

Lotusland Members

WE WELCOME NEW MEMBERS WHO JOINED IN
DECEMBER 2010, JANUARY AND FEBRUARY 2011

LOTUS KEEPERS

GARDEN CONSERVATOR (GARDEN PATRON)

Ms. Deborah Baldwin

GARDEN ADVOCATE (LEVEL III)

Mr. & Mrs. Jeffrey H. Donahue
Ms. Mahri Kerley
Mrs. Helen Marden

GENERAL MEMBERSHIP

FRIEND

Mrs. Ann Livedalen
Bruce Weber & Nan Bush

FAMILY (LEVEL II)

Mr. Peter Artusio & Ms. Sonja Winter
Mr. & Mrs. David Bothman
Mrs. Catherine Bouvier
Ms. Mureen Brown & Mr. Bradley Bouwhuis
Mr. & Mrs. Roland Bryan
Dr. & Mrs. Richard Danson
Jonathan & Amy DeLong
Mr. & Mrs. Vincent Diglio
Mrs. Melanie Ellison
Mrs. Barbara Frombola & Mr. Kok Onno
Ms. Stefani Golden & Ms. Sheila Madson
Dr. & Mrs. W.N. Guddal
Mr. & Mrs. Roger Haupt
Mr. & Mrs. Jess Hernandez
Mr. Mike Kauffman
Ms. Dawn Ligon
Ms. Donna Mitchell
Ms. Colleen Wheeler
& Mr. Steven Baldonado
Mr. & Mrs. Eric Zimmermann

INDIVIDUAL (LEVEL I)

Mr. & Mrs. Harry Abernathy
Mrs. Hazel Anderson
Mrs. Lee Appleton
Ms. Deeahna Arrieta
Mr. & Mrs. Robert Bennett
Mr. Bob Bierig
Ms. Jayne Burton
Mr. Robby Carmody
Mr. & Mrs. Warren Carpenter
Mr. & Mrs. David Chenoweth

Mr. & Mrs. Michael Dancyger
Rob & Kathy De Karr
Mr. & Mrs. Jerry Eberhardt
Mr. Judd Edelstein
Mr. & Mrs. Joseph Elmlinger
Mrs. Jan Clement Forbush
Ms. Gwen Fuller
Ms. Sandra Garcia
Mr. & Mrs. Rick Goeden
Ms. Gayle Golden
Mr. Eric Gruendemann
Ms. Jill Hall
Mrs. Pat Hamilton
Mr. Robert Hemedes
Mrs. Carolyn Husting
Mr. Chuck Husting
Dr. & Mrs. Angel Iscovich
Ms. Ann Kale

Mrs. Debra Koopmans
Ms. Carmen Kuchera
Ms. Sharon Lane
Mr. & Mrs. Robert Lyons
Ms. Susan Mazer & Mr. John Damuth
Ms. Devon Nielsen
Ms. January Nordman
Mrs. Bobbie Offen
Mr. & Mrs. Dan Pardoe
Miss Rima Robinson
Ms. Julie Rosenberg
Mr. Kyle Simon & Ms. Danielle Byers
Mr. & Mrs. Carmelo Tasca
Mr. & Mrs. Joseph Tasca
Mr. & Mrs. Ed Tomeo
Mr. & Mrs. Michael Tweddle
Mr. & Mrs. Richard Weist
Mr. & Mrs. Frank Willey

Members Who Have Increased Their Level of Support

DECEMBER 2010, JANUARY AND FEBRUARY 2011

LOTUS KEEPERS

GARDEN ADVOCATE (LEVEL III)

Mr. & Mrs. Harry Kolb
Ms. Dorinda Murry & Mr. Henry Franco
Mr. & Mrs. Ron Winston

GENERAL MEMBERSHIP

FRIEND

Mr. & Mrs. Nigel Buxton
Ms. Lori Kraft Meschler

FAMILY (LEVEL II)

Rita & Stanley Aslanian
Dr. & Mrs. Robert Cathcart
Ms. Carolyn V. Cooper
Judge & Mrs. John G. Davies
Joyce & Art Duarte
Ms. Sheri Eckmann & Mr. William Klansek

Mr. & Mrs. Robert Eisberg
Mr. & Mrs. Theodore G. Erler
Dr. Jay B. Fortman & Dr. Jennifer Fortman
Mr. Miles Goldrick & Ms. Paula Hatley
Carolyn & Dale Hanst
Mr. & Mrs. Joseph R. Henderson
Mr. & Mrs. John T. Hoag
Mr. & Mrs. Lindsay Hutchinson
Mr. Blake Jamison
Mrs. Elaine Krankl
Ms. Marcelle Martin
Mike & Gaylee Nuttman
Eb & Judy Shortle
Mr. & Mrs. Greg Tebbe
Mrs. Betsy Thies & Ms. Marjorie Garland
Mr. & Mrs. Gregory Thorpe
Dr. & Mrs. David Tufenkian
Scott & Lannette Turicchi
Mr. Lee Walmsley & Mrs. Diana Maenhout

Our Membership Manager, Bambi Leonard, makes every effort to ensure that donor information is correct. If you find an error or omission, please contact her at 805.969.3767, ext. 120 or bleonard@lotusland.org.

Ganna Walska Lotusland Registration Form

PAYMENT METHOD: ☐ Check enclosed ☐ VISA ☐ MasterCard ☐ AMEX Expiration date _____

Card number _____ CVC # _____ Signature _____

Member name _____ Email _____

Address _____ Phone _____

*Fees are refundable only if cancellation is received one week before event.
If minimum enrollment is not reached, classes and lectures may be canceled.
No phone reservations, please.*

Mail to: Ganna Walska Lotusland, Attn: Member Events, 695 Ashley Road, Santa Barbara, CA 93108

Behind-the-Scenes Tour of Hearst Castle

Tuesday, April 26 • 8:30 AM TO 6:00 PM

\$90/members • \$100/nonmembers • INCLUDES TRANSPORTATION, ADMISSION AND A GOURMET BOX LUNCH

No. of people attending _____ No. of cars _____ Total \$ _____

Afternoon Garden Tour with Virginia Hayes

Saturday, April 30 • 1:00 PM TO 4:00 PM

\$90/members • \$100/nonmembers • INCLUDES TRANSPORTATION, ADMISSION AND WINE AND HORS D'OEUVRES

No. of people attending _____ No. of cars _____ Total \$ _____

Mother's Day Tea and Tour

Saturday, May 7 • 1:30 TO 4:00 PM

\$65/members • \$75/nonmembers • \$20/children 5-12 • CHECK ONE: ☐ Docent-guided tour ☐ Self-guided tour

No. of people attending _____ No. of cars _____ Total \$ _____

Cacti and Cocktails

Saturday, June 11 • 3:00 TO 6:00 PM

\$50/members • \$60/nonmembers • CHECK ONE: ☐ Docent-guided tour ☐ Self-guided tour

No. of people attending _____ No. of cars _____ Total \$ _____

Garden Tour with Virginia Hayes

Saturday, June 18 • 9:30 AM TO 4:00 PM

\$105/members • \$115/nonmembers • INCLUDES TRANSPORTATION, ADMISSION AND LUNCH

No. of people attending _____ No. of cars _____ Total \$ _____

Solstice Twilight Tour

Saturday, June 25 • 3:30 TO 6:30 PM

\$55/members • \$65/nonmembers • CHECK ONE: ☐ Docent-guided tour ☐ Self-guided tour

No. of people attending _____ No. of cars _____ Total \$ _____

LotusFest!

Saturday, July 16 • 2:00 TO 5:00 PM

\$75/members • \$85/nonmembers

No. of people attending _____ No. of cars _____ Total \$ _____



Ganna Walska LOTUSLAND®

695 Ashley Road
Santa Barbara, CA 93108

Address Service Requested

Nonprofit Org.
U.S. POSTAGE
PAID
Santa Barbara
California
Permit No. 163

Spring and Summer 2011 Member Events

MANY LOTUSLAND EVENTS are open to nonmembers,
so please let your friends and neighbors know about the great activities we offer.

Friday, April 15

*Behind-the-Scenes Tour
with Virginia Hayes*
2:30 PM

For Garden Advocate (Level III) and
above members. To reserve a space,
call 805.969.9990.

Tuesday, April 26

Behind-the-Scenes Tour of Hearst Castle
8:30 AM TO 6:00 PM
See details on page 12. Please use the
coupon on page 15 to register.

Saturday, April 30

*Afternoon Garden Tour
with Virginia Hayes*
1:00 TO 4:00 PM
See details on page 5. Please use the
coupon on page 15 to register.

Saturday, May 7

Mother's Day Tour and Tea
1:30 TO 4:00 PM
See details on page 5. Please use the
coupon on page 15 to register.

Saturday, May 14

*Members' Family Day
An Old-Fashioned Picnic at Lotusland*
10:00 AM TO 4:00 PM
See details on page 8 and 9 and use
coupon on page 9 to register.

Sunday, June 5

Lotus Society Luncheon
NOON
For information on how to join
The Lotus Society, call Anne Dewey
at 805.969.3767, extension 105.

Saturday, June 11

*Behind-the-Scenes Tour
with Virginia Hayes*
2:30 PM
For Garden Advocate (Level III) and
above members. To reserve a space,
call 805.969.9990.

Saturday, June 11

Cacti and Cocktails
3:00 TO 6:00 PM
See details on page 10. Please use the
coupon on page 15 to register.

Saturday, June 18

Garden Tour with Virginia Hayes
9:00 AM TO 4:00 PM
See details on page 5. Please use the
coupon on page 15 to register.

Saturday, June 25

Solstice Twilight Tour
3:30 TO 6:30 PM
See details on page 10. Please use the
coupon on page 15 to register.

Saturday, July 16

LotusFest!
2:00 TO 5:00 PM
See details on page 4. Please use the
coupon on page 15 to register.

Sunday, July 24

Dreams of a Diva
4:00 TO 8:00 PM
See details on page 11. Invitations
will be mailed in mid-June.

Tours

Tours are offered at 10:00 AM and
1:30 PM, Wednesday through Saturday.
Family Tours, available for groups
with children under age 10, are child
and parent friendly. They are separate
from regular adult tours. Please call
805.969.9990 for reservations.

*Remember to take advantage of your
current 2011 admission passes before
the expiration date!*

"Gone," Paintings by
Penelope Gottlieb, will be on view
in the Pavilion through April 23

The Giant Ants will leave
Lotusland on May 16

Call 805.969.9990 to see
these very special exhibitions
