



LOTUSLAND

NEWSLETTER FOR MEMBERS ♦ VOLUME 16 NO. 3 ♦ SUMMER 2007

Madame Ganna Walska: An Eclectic Collector

BY DEANNA HATCH

IF YOU'VE HAD a docent tour at Lotusland, you've no doubt heard about the "million dollar garden," Lotusland's world-class cycad garden with approximately 500 rare and valuable cycads representing more than 170 species. In 1971, just before work began to prepare the site for the cycads, Madame Ganna Walska sold most of her enormous—and world-class—jewelry collection for almost a million dollars.

Madame Walska's niece, Hania Tallmadge, says her aunt's passion for jewelry started in Russia with Fabergé and continued on to Paris and then New York. Although Hania agrees that the proceeds from the sale most likely helped to purchase the rare cycads, there was an additional reason for the sale. Madame Walska had tired of the chore of retrieving and then returning her jewelry, kept in her safe deposit box at Security Bank in downtown Santa Barbara, every time she wanted to wear it. She did have paste copies of some pieces. Hania says "The copies were so good that it was very difficult to tell the difference between them and the real thing. One day she had to take a piece of jewelry and the paste copy to Cartier to find out which was real. After that, she never wore her paste copies again."

According to an article in the *Los Angeles Times* by Mary Lou Loper, Ward Landrigan—who at the time headed Sotheby, Parke-Bernet, Los Angeles—persuaded Madame Walska to sell 146 pieces of her collection, but it took three years for her to decide. Mary Vandegrift from Parke-Bernet urged Madame Walska to allow them to include a paragraph about her in the auction catalogue because "your jewels reflect

Continued on page 2



PHOTOS FROM LOTUSLAND ARCHIVES

Madame Walska's passion for jewelry began at a young age in Russia. This painting, known as the "Czar's portrait," was painted after the Czar of Russia selected her as the most beautiful woman present at one of his royal balls.

IN THIS ISSUE

Madame Ganna Walska: An Eclectic Collector	1	Members' Family Day	10
Fabulous Mish Brooch to be Auctioned	3	<i>Buried Treasure! Hidden Wonders in the Soil</i>	
LotusFest!	4	Four Talented Additions to the Board and a New Lifetime Honorary Trustee	12
Prospective Docent Reception and Docent Training for Fall 2007	5	Where the Wild Things Are	14
Thank You to Our Garden Sponsors and Garden Benefactors	5	<i>Aloe dichotoma</i>	
New to the Collections	6	Digital Photography Workshop	14
<i>Insectary Plants</i>		Volunteer Profile: Lynne Scott	15
Summer's Evening Twilight Tour	6	<i>Learning, Sharing and Making a Difference</i>	
Horticultural Happenings	7	Music at Lotusland: An Afternoon of Jazz with John Pizzarelli	15
Mid-State Bank & Trust Supports Lotusland's Outreach Program	7	Volunteer Appreciation Picnic	16
The Lotus Society	8	<i>Lotusland Says Thank You</i>	
		Garden Sponsors, Benefactors and Patrons Enjoy Special Benefits	19

The LOTUSLAND
NEWSLETTER FOR MEMBERS
is published by
Ganna Walska Lotusland Foundation
695 Ashley Road
Santa Barbara, California 93108
805.969.3767
www.lotusland.org

BOARD OF TRUSTEES
Kisa Heyer, President
W. Mason Farrell, Vice-President
Arthur R. Gaudi, Secretary
Linda J. Gluck, Treasurer
Ella Brittingham
Jane Gail Copelan
Geoffrey Crane
Larry Durham
Sherry Gilson
Harry W. Kolb
Jill Levinson
Michael Mayfield
Sandra Nicholson
Chapin Nolen
Brett M. Posten
Barbara Siemon
Cynthia Spivey
Marianne Sprague
John Tilson
Nancy L. Wood

Merryl Brown
Robert J. Emmons
Anne Jones
Michael Towbes
Carol L. Valentine
Lifetime Honorary Trustees

Steven Timbrook, Ph.D.
Director Emeritus
Interim Financial Officer
Anne Dewey, CFRE
Director of Development

Marguerite Gamo
Manager of Administration and Human Resources

Deanna Hatch
Communications Manager

Virginia Hayes
Curator of the Living Collection

Michael Iven
Director of Grounds and Facilities

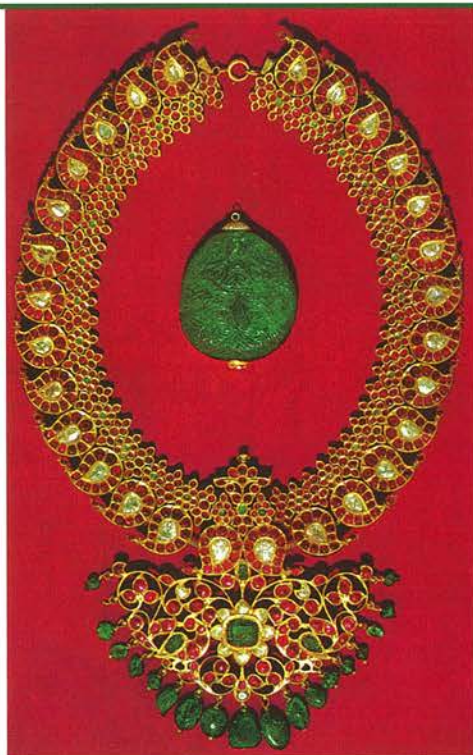
Dorothy Shaner
Public Programs Manager

Printed by Jano Graphics
Lindse Davis, Design

Printed on recycled and recyclable paper
with vegetable-based inks

Mission Statement

To preserve and enhance the
spectacular collections of exotic plants
on the Montecito estate of the
late Madame Ganna Walska and,
through interpretation of these collections,
to foster increased knowledge and
appreciation of the importance of plants
and the need for their conservation.



South Indian Thali necklace with flexible gold braid, gold mounts in the form of mangos, and numerous rubies. Gold open-work pendant is set with rubies, emeralds, and diamonds suspending emerald drops.
CENTER: "Mogul" pendant with emerald weighing 200 carats and large rose diamond.



TOP: Delicate gold mount brooch centering on one oval-faceted ruby weighing approximately 3.50 carats, set with four carved diamonds in the form of butterfly wings and one pear-shaped diamond with a total weight of 30 carats.
BOTTOM: Pear-shaped briolet diamond pendant weighing 95 carats with platinum cap set with five marquise-shaped diamonds.



TOP: Platinum ring set with a natural black pearl weighing 162 grains and two tapered baguette diamonds.
BOTTOM: Open-work platinum ring set with emerald-cut sapphire weighing 39 carats, and numerous round and rose-cut diamonds.

Continued from page 1

such individual taste and have such interesting associations, it seems only right to share some of the background with the reader."

The auction catalogue—a collector's item in itself—is titled "The Important Jewelry Collection of Madame Ganna Walska." The introduction follows:

Mme. Ganna Walska, the well-known opera and concert singer of two continents during the 1920's through 1940's, acquired her precious jewels over a period of many years.

Long before the present popularity of large jewels, Mme. Walska designed and collected for herself huge necklaces, brooches and bracelets, not popular then but very much in fashion now.

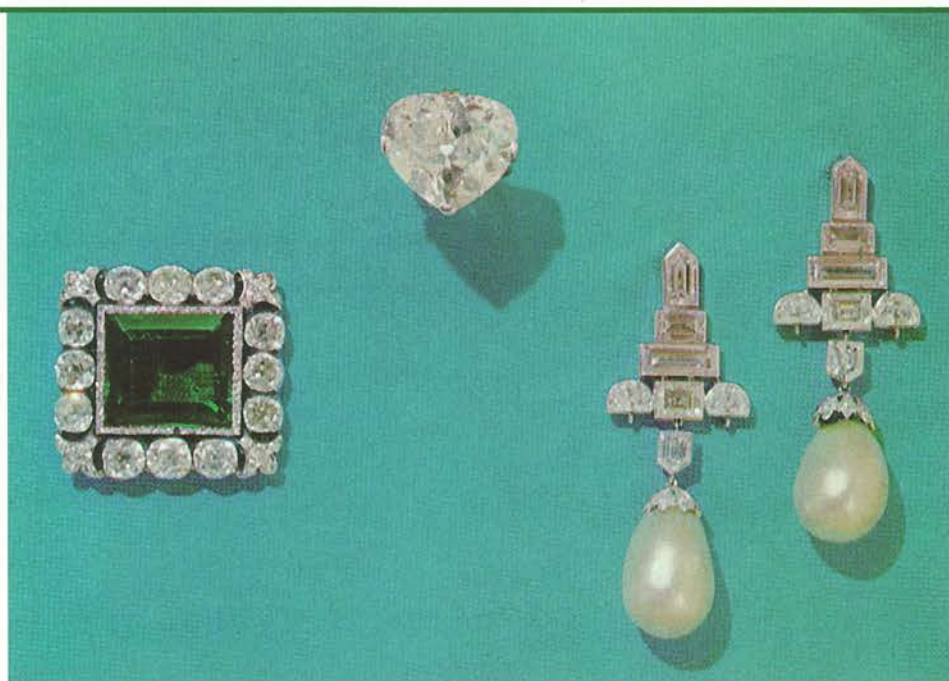
The collection, rich in colored stones, offers in addition to the numerous fine jewels of distinction and highest quality, such exquisite pieces as a butterfly of carved diamond wings en tremblant; a rare collection of Indian jewelry featuring several magnificent necklaces, some with matching sets of earrings; and the great Mogul carved emerald.

The collection included belts, shoe buckles and handbags encrusted with gems, and a parasol with a Fabergé gold, gray enamel, and diamond vanity

handle. The handle opened, and inside were a mirror and compartments for powder and lipstick. Just one of many, many fabulous pieces was a sapphire, diamond, and emerald pendant with a sapphire weighing 28 carats and set with two emeralds weighing six carats, one emerald rondel, three pear-shaped sapphires weighing 135 carats, seven large fancy-shaped diamonds, five baguette diamonds, fifty-four square-cut diamonds, and sixty round diamonds with a total weight of 8.15 carats.

A great many of the estimates at the sale were doubled. Loper said that Ralph Esmerian, a "very wealthy dealer and collector," bought more than \$300,000 worth of jewelry, including an emerald clasp that once belonged to Catherine the Great for \$125,000 and a 95-carat yellow briolet diamond pendant for \$55,000. New York jeweler Harry Winston bought an Indian carved emerald pendant for \$54,000.

Madame Walska's passion for collecting jewels led to her leaving a fabulous collection of rare, virtually irreplaceable cycads for generations of



LEFT: Clasp with emerald weighing 20 carats and 97 old-mine diamonds weighing 15.25 carats total.

CENTER: Heart-shaped diamond ring weighing 21.15 carats.

RIGHT: Natural pearl and diamond pendant earclips set with 54 baguettes, fancy-shaped diamonds, and old-mine diamonds weighing 13 carats suspending two pear-shaped natural pearls.

garden lovers who visit Lotusland from around the world. Landscape designer Charles Glass, who helped create the

cycad garden, said to Madame Walska "...this will be one of the greatest achievements of our lives."

Fabulous Mish Brooch to be Auctioned

GANNA WALSKA would surely have found a kindred spirit in famed jewelry designer—and avid gardener—Mish Tworkowski. Mish has generously donated a piece of his jewelry to our annual fundraiser in both 2005 and 2006, but this is the first year he created a piece specifically for the garden. Mish says his intention was "to combine the spirit of Madame Walska's style with the beauty of a lotus blossom." There are approximately 3.55 carats of diamonds on the brooch, which is approximately 2 inches in diameter and 1¼ inches deep. The brooch is inscribed "Lotusland 2007 no. 1" and "Mish New York."

Valued at \$38,000, the brooch will be auctioned on July 22 at *Peter Pan's Lotusland: Where you Never Grow Up!* Silent bids will be accepted prior to the event by calling 805.969.3767, extension 105. All proceeds will benefit

Lotusland, and through September 1, 2007, Mish New York will donate 10% of the proceeds from the sale of additional Lotus Brooches!

We are grateful for Mish's passion

for Lotusland and for his amazing generosity to the garden.

To read more about Mish, see "Mish at Lotusland" in the Winter 2007 issue of the *Lotusland Newsletter for Members*.



LEFT: Mish New York's Lotus Brooch is hand-crafted in 18K yellow and rose gold with diamond pavé, marquise diamonds set in the flower's stamens, and diamond beads. RIGHT: A secret compartment in the center of the flower cradles a removable 7.15-ct. peridot—but can hold any treasure.

LotusFest!

SATURDAY, JULY 28

2:00 TO 5:00 PM

Please join us for this celebration of the spectacular flower that is Lotusland's namesake.

July is peak blooming season, and guests will have the opportunity to view these uniquely beautiful flowers while enjoying a relaxing afternoon at this casual, fun event.

Enjoy these afternoon delights:

Wine tasting from Santa Barbara County's premier vintners

Mellow jazz with Vajra

Delectable hors d'oeuvres

Lotus lore galore

Lotus viewing

Ikebana (the art of Japanese flower arranging)

Lotus flowers open during the day and close at night. Prime viewing time during LotusFest will be until 3:00 or 4:00 PM, depending upon weather conditions, so make sure to allow time to savor the spectacular view of lotuses in bloom.

To register for this fun and enlightening event, please use the coupon on page 19 or visit our website at www.lotusland.org.

Prospective Docent Reception and Docent Training for Fall 2007

THURSDAY, AUGUST 23 • 2:00 PM

*M*ADAME GANNA WALSKA'S extraordinarily creative vision of garden design was transformed into reality by many talented landscape designers and horticulturalists. This transformation has been an ongoing process, each garden yielding fascinating stories about its beginnings and metamorphosis into its present-day form.

Visitors to Lotusland are treated to botanical and historical information about the estate interpreted by docents who have undergone extensive training to prepare them for giving public tours.

Every other fall, a 14-week docent-training course provides all necessary information for conducting a tour of the garden. Instructors are drawn from the Lotusland staff, the Santa Barbara community, and other California academic and horticultural institutions. These informative and enjoyable Monday-morning sessions last approximately two-and-a-half hours. This fall's docent training begins on September 17.

A reception for prospective docents will be held at 2:00 PM on Thursday, August 23. This biennial event offers prospective docents an opportunity to learn more about docent training and to



A docent shares details about Madame Walska's horticultural clock, planted with a variety of succulents.

PHOTOS BY VIRGINIA HAYES

meet some of the very knowledgeable docents who currently lead tours of the garden. Please tell your friends and neighbors about the program. To receive an invitation to the reception or for more information, please contact our Public Programs Coordinator, Debbie Hild, at 805.969.3767, extension 116, or e-mail dhild@lotusland.org.



Visitors enjoy viewing the citrus orchard and are invited by their docent to take a sample from the box of lemons provided by our grounds staff.

Thank You to Our

GARDEN SPONSORS

Mrs. Edward E. Stepanek
Jack Mithun &
Mercedes Millington

GARDEN BENEFACTORS

Mr. & Mrs. Chad Dreier
Mr. & Mrs. Frederick W. Gluck
Harold & Diana Frank
Family Foundation
Mr. & Mrs. Thomas E. Hugunin
Mr. & Mrs. William W. Nicholson
Joey Pearson
Mr. & Mrs. Edward Shea
Ms. Beverly Smaniotto
Ms. Jeanne C. Thayer
Mr. Jack Baker,
Wallis Foundation
Mr. & Mrs. Robert J. Woods

NEW TO THE COLLECTIONS

Insectary Plants

ON THE MAP in the Lotusland Visitor Guide, this garden is noted as the Butterfly Garden. It serves an additional purpose, however—one that helps ensure the health and beauty of the entire garden. Most of the plants included there have been chosen to attract not only butterflies and moths, but also a host of other beneficial insects. They provide food in the form of pollen or nectar, as well as places of refuge for everything from ladybird beetles and green lacewings to hover flies and honey bees. This spring, a small group of



PHOTOS BY VIRGINIA HAYES

Mimulus 'Jack.'



Coreopsis grandiflora.

volunteers gave funds and time to add a number of attractive and useful plants to the butterfly garden. Here is just a sampling of what is now in bloom.

Mimulus 'Jack' is a selection of the California native monkey flower. It has dark red tubular flowers that provide nectar to visiting insects and blooms nearly year-round.

Coreopsis grandiflora is in the sunflower family, and its sunny yellow flowers have the characteristic array of



Salvia greggii and S. leucantha.

ray flowers surrounding a central button of tiny tubular flowers that lack petals. All members of this family are good additions to a butterfly or insectary garden.

The genus *Salvia* is large, with many species and cultivars. All are attractive to insects as well as hummingbirds. The pink flowers in the foreground belong to a selection of *Salvia greggii* and the purple spikes are of *S. leucantha*.

—Virginia Hayes

Summer's Evening Twilight Tour

SATURDAY, AUGUST 25 • 4:30 TO 7:30 PM

SUMMERTIME, AND THE "livin' is easy..." Enjoy the last days of summer in the enchanted gardens of Lotusland.

Our popular Twilight Tours allow guests to choose how they want to spend their time in the garden, touring with a docent or strolling on their own. Your visit will begin with a beverage served in a Lotusland wine glass, a

keepsake of your visit. Mid-tour, wine and hors d'oeuvres will be served on the terrace overlooking the main lawn.

Don't miss this opportunity to enjoy Lotusland while the evenings are still warm and the "fish are jumpin'."

Our Twilight Tours fill quickly, so please register early by using the coupon on page 19.

—Dorothy Shaner



VIRGINIA HAYES

Horticultural Happenings

MANY OF THE PLANTS you see at Lotusland have traveled long distances to arrive here. Regardless of their origins, once at Lotusland, all plants follow the same route beginning with the Curation Department. The following is just one example.

On July 25, 2006, Lotusland received 20 seeds of an uncommon cycad that is native to the Democratic Republic of Congo. The seeds of *Encephalartos ituriensis* had been confiscated as they entered the country illegally through John F. Kennedy International Airport and were subsequently distributed by the U.S. Fish and Wildlife Service to botanic gardens listed as rescue centers, of which Lotusland is one.

Upon arrival, the seeds were recorded in the plant record database and given an accession number. The plant accession form allows for detailed information to be recorded, and all plants at Lotusland are tracked throughout their life history using this database.

The seeds began to germinate after 30 days in the greenhouse and are now growing for future inclusion in the garden. When plants of *Encephalartos ituriensis* are of adequate size, they will be placed in their permanent location in the garden, which will be plotted on the digital map of Lotusland.

The digital map is created with ArcGIS mapping software that is a product of ESRI. Founded in 1969 by Lotusland members Jack and Laura Dangermond, ESRI is the leader in GIS (Geographic Information System) tech-



A map of the Cycad Garden at Lotusland, created using ArcGIS, highlighting cycads that developed cones during 2005. Plants at Lotusland are plotted on the digital map, which is linked to the plant record database allowing for a variety of options for visually representing data. Plants can be labeled on the map (not shown) according to their accession number or scientific name.

nology. ArcGIS is a powerful program that can be used not only for mapping, but also for the display, management, and analysis of spatial and non-spatial data. The display portion of Lotusland's map joins seamlessly with the plant record database, allowing for an endless variety of options for visually representing data pertaining to the plant collections at Lotusland.

Encephalartos ituriensis is new to the collections and should perform well in the garden. The plant's growth rate and cone production will be monitored and

recorded at regular intervals. In time, this species will be propagated at Lotusland, which will aid in alleviating the illegal importing of seeds.

The information contained in the plant record database at Lotusland has a central role in the management of Lotusland's plant collections. Curation Departments are integral parts of all botanic gardens, and as the "overseers" of the plant collections, they have a multi-faceted role in the stewardship of these collections.

—Paul Mills, Assistant Curator

Mid-State Bank & Trust Supports Lotusland's Outreach Program

LOTUSLAND'S PUBLIC PROGRAMS MANAGER Dorothy Shaner and Board President Kisa Heyer accept a generous grant from Jason Wilson of Mid-State Bank & Trust.

We are grateful to Mid-State Bank & Trust for its continued financial support of bus transportation for Lotusland's very successful Fourth Grade Outreach Program.



VIRGINIA HAYES



The LOTUS SOCIETY

LUNCHEON HONORS MEMBERS OF THE LOTUS SOCIETY

*T*HE SIXTH ANNUAL Lotus Society Recognition Luncheon was held at the beautiful home and garden of Bruce Gregga and William Laman on June 10. Members of *The Lotus Society* have each made a gift or bequest of \$10,000 or more to Lotusland's Endowment Fund. To learn more about *The Lotus Society*, or to arrange a personal consultation with an experienced estate planner on *The Lotus Society* Committee, please call Lotusland's Director of Development, Anne Dewey, at 805.969.3767, extension 105.



We are very grateful to Bruce Gregga and William Laman for sharing their home and garden with members of *The Lotus Society*. Luncheon was served on the upper lawn overlooking the delightful terraced gardens.



New *Lotus Society* member Joey Pearson, Kathryn and Bill Calise, and Charter Member Jackie Stevens enjoyed strolling in the gorgeous garden.



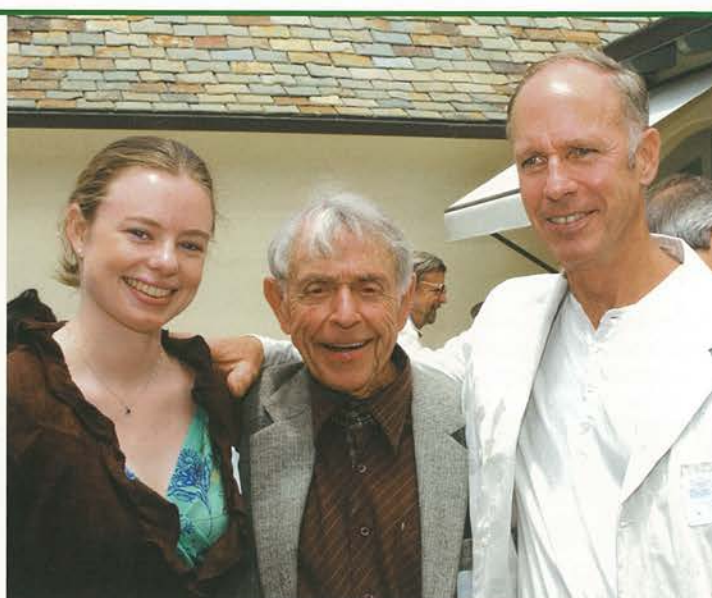
William Laman and Bruce Gregga's generosity provided a lovely setting for this annual event, enjoyed by all.



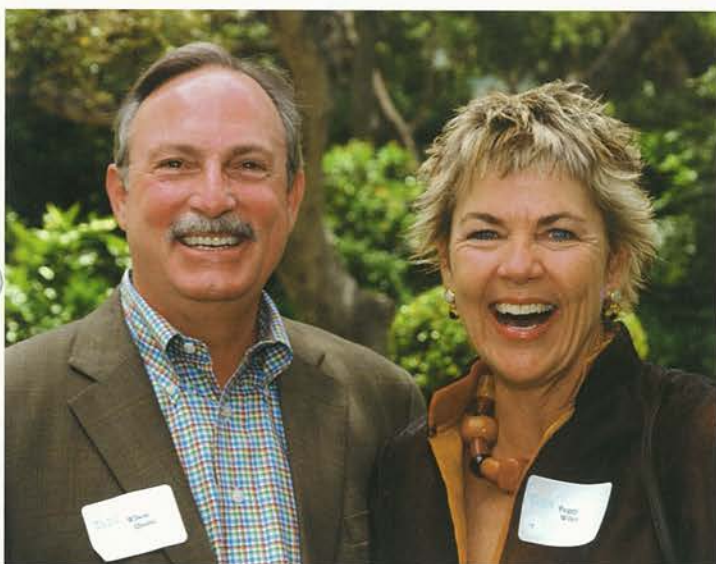
New *Lotus Society* members Ron and Desiree Kaye are pictured in front of the hosts' charming French country home.



Lifetime Honorary Trustee Carol Valentine was pleasantly surprised by a birthday cake. Charles Fairbanks and Karen Kolb are in the background.



Jack Baker (CENTER) with his granddaughter, Lelah Baker-Rabe, and Eric Nagelmann chatted at the entrance to the house.



Warren Quarre and Peggy Wiley enjoyed their first **Lotus Society** luncheon. Peggy is a new Lotus Society Committee member.



Looking picture-perfect are Lynne Humphrey, Anna Lafferty, Amanda Pelch, and Mary Lou Ardohain.



Keith Mautino, a new member of **The Lotus Society**, and his guest Laurel Tower admired the beautiful setting.



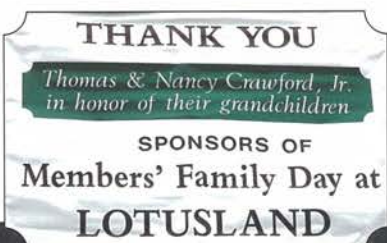
Robin Cudahy and Karen Roberts chatted in the beautifully decorated house before enjoying the delicious luncheon.

Members' Family Day, May 19, 2007

GENEROUSLY SPONSORED BY THOMAS & NANCY CRAWFORD, JR.

The banner pictured at right thanks our generous sponsors at Members' Family Day.

Several members of the Crawford family attended, including these three grandchildren, who got into the spirit of the day.



Talented magician Mark Collier performed in the Theatre Garden. His deft card tricks and magical illusions thrilled adults and children alike.



Tossing rings onto the pirate ship required some practice.



Legrand, Franks & Dodge entertained on the main lawn from noon until two.



Having your face painted by Anji Lawson is always a favorite activity at Members' Family Day.



Artist Gail Lucas drew a giant mural with a buried treasure theme for young and not-so-young guests to paint throughout the day.

Buried Treasure! Hidden Wonders in the Soil

WORD, JR. IN HONOR OF THEIR GRANDCHILDREN



Members enjoyed a picnic on the main lawn, with watermelon for dessert, in between activities.



Photographer Bob Debris (FAR RIGHT) provided fabulous costumes to transform guests for their souvenir photos.



After visiting the Tattoo Parlor, this young guest was busy with her Pirate Coloring Book.



Floating a pirate ducky down the runnel was a challenge.



Making pirate necklaces and decorating treasure bags were favorite activities at the craft tables.



Spin the wheel and answer the question to win a booty bag filled with coins and jewels.



Is that a tiger decorating a flower pot to fill with Lotusland succulents?



There's nothing left but a smile and a vanilla mustache from this ice cream cone.

Four Talented Additions to the Board and a New Lifetime Honorary Trustee

A cocktail party was held at Lotusland in April to honor Anne Jones for her 23 years of service as a founding trustee and to officially welcome six trustees who joined the board in the past year. Two of the trustees, Michael Mayfield and Chapin Nolen, were profiled in the Fall 2006 issue of the *Lotusland Newsletter for Members*. Profiles of Jane Copelan, Brett Posten, Cynthia Spivey, and Marianne Sprague follow.

Fellow founding trustee Arthur Gaudi and Director Emeritus Steven Timbrook shared memories of working with Anne Jones during her tenure on the board. Special guest Edward Schneider, the President/CEO of the Santa Barbara Botanic Garden, reminisced about his years working with Anne when she was an SBBG board member.

Board President Kisa Heyer presented playing cards with Lotusland images—created especially for Anne—to her in a beautiful wood and shell box.

ANNE JONES NAMED LIFETIME HONORARY TRUSTEE

AT ITS 2007 ANNUAL MEETING, the Board of Trustees of Ganna Walska Lotusland honored Anne Jones by electing her a Lifetime Honorary Trustee.

This action recognizes Anne's 23 years of outstanding service to Lotusland as one of its five founding trustees. She served as Vice President from 1984 to 2005 and was a member of the Nominating and Governance Committee from its creation throughout her tenure. She also lent her wealth of expertise on the *Lotusland Celebrates* Committee from 1995 to 1999, the Topiary Garden Campaign Committee in 2000, and the Buildings and Grounds and Horticulture Committees from 1987 until her retirement.

I am fortunate to have had Anne's wise counsel during my 10 years at Santa Barbara Botanic Garden, where she was a board member from 1976 to 1995 and served as its board president for five years, as well as during my tenure at Lotusland. Other Santa Barbara institutions benefited from Anne's dedication and skills as well. She helped begin the docent program at the Santa Barbara Museum of Art and has been a member of the Garden Club of Santa Barbara for more than 40 years.

Lotusland is grateful for the many years of support that Anne so generously gave, and we are pleased that she will join Meryll Brown, Robert Emmons, Michael Towbes and Carol Valentine as Lifetime Honorary Trustee.

—Steven Timbrook

LOTUSLAND WELCOMES FOUR NEW TRUSTEES

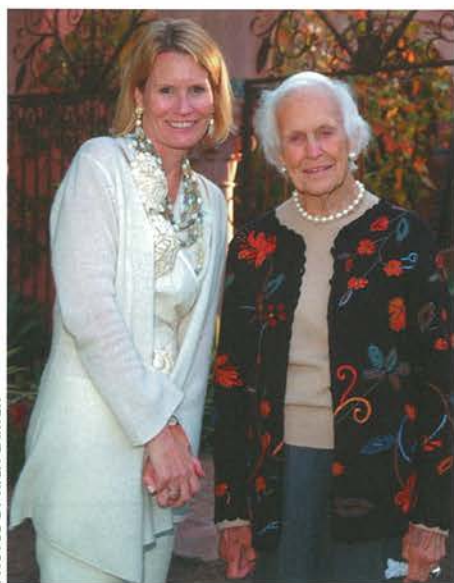
LOTUSLAND IS FORTUNATE to have four energetic additions who bring a diverse wealth of expertise and experience to its Board of Trustees.



JANE COPELAN

JANE COPELAN WAS raised in Santa Fe, New Mexico and moved to Santa Barbara 25 years ago. Inspired by her Santa Fe experience, she opened the original Zia Café in 1985. She has since sold the restaurant, which gives her time to devote herself to philanthropic efforts in Santa Barbara and elsewhere.

Jane has been a Lotusland docent for ten years and helped to launch the



Board President Kisa Heyer with Lotusland's newest Lifetime Honorary Trustee, Anne Jones.



Anne Jones is an avid, accomplished bridge player and was delighted to receive playing cards created just for her with Lotusland images. Lifetime Honorary Trustee Carol Valentine looks on.

Fourth Grade Outreach Program. She was instrumental in establishing and continues to be active with Project Open Hand in San Francisco. Jane's other interests include music and her two Labrador retrievers, Willie and Pearl.

Fortunately for Lotusland, Jane plans to continue as a Docent. As a Trustee, she is co-chair of the Lotus Society Committee and a member of the Public Programs and Horticulture Committees.



BRETT POSTEN

BRETT POSTEN is co-founder and Creative Principal at Ideocore, a Santa Barbara-based brand-launch advertising agency.

A native of Kansas City and graduate of the University of Virginia, Brett's earliest working life began in fashion, with Ralph Lauren and evolved into advertising with McCann Erickson in New York City.

His interest in Lotusland stems

from his interest in all the various forms of design manifest at the property, from the wooded paths through the garden to the hidden architectural surprises to the divine engineering of the plant life.

Brett, his wife Joanna, daughter Elsa Jane (6) and son Tate (3) "are thrilled to be a part of the Santa Barbara community and are honored to be a part of Lotusland for years to come." Brett is chair of the Marketing Committee and a member of the Long-Range Planning Committee.



CYNTHIA SPIVEY

AFTER GRADUATING FROM UC Santa Barbara in 1983, Cynthia Spivey spent the next 18 years working and living around the country and the world. Her professional career focused on marketing and corporate communications. After starting her family, she began her own business selling antiques and vintage homewares in private shows.

Cynthia and her husband have three teenage children, born in three different countries. They returned to Santa Barbara in 2000, and Cynthia has been involved in numerous nonprofit endeavors since that time. She has been on the *Lotusland Celebrates* Committee for four years and is currently the co-chair of the event. Cynthia will continue on the *Lotusland Celebrates* Committee and has recently joined the *Music at Lotusland* Committee.



MARIANNE SPRAGUE

MARIANNE SPRAGUE has a Master's Degree in Special Education and taught for several years. In 1990, she moved to Santa Barbara with her husband, Norm, and their six children.

In Santa Barbara, she has continued her work with nonprofit organizations as a Trustee and Board Chair of Crane Country Day School, as a Trustee of the College of Wooster in Ohio, and as President of the Cate Parents Association. At Crane Country Day School, she was involved in the fund-raising campaign, design, and construction of the new Library Arts Facility; chaired the Salaries and Benefits Committee; and created and chaired the first Country Fair and Spring Benefit (now in its 15th year).

As an avid gardener she spends as much time in her garden as possible.

Her interest in gardens extends to her participation as board member and Horticulture Chair of the Garden Club of Santa Barbara. Besides gardening, she enjoys fly-fishing and reading.

Marianne is a member of Lotusland's Long-Range Planning and Ad Hoc Executive Director Search Committees.



Trustee Linda Gluck hosted a luncheon at her home in honor of Anne Jones. STANDING: Nancy Wood, Ella Brittingham, Linda Gluck, Ganna Walska, Sherry Gilson, Barbara Siemon and Kisa Heyer. SEATED: Anne Jones and Carol Valentine.

Where the Wild Things Are

ALOE DICHOTOMA

THE QUIVER TREE, or kokerboom in Afrikaans, is so named from its use by Bushmen. They close one end of a hollowed-out branch with a leather cap to hold their arrows. Young flower buds have an appearance and taste similar to asparagus and are part of the Bushman diet. Blooming season is winter, and the flowers are yellow. Their abundant nectar draws birds, insects and even baboons, which can quickly strip the tree of its flowers.

This striking tree aloe is native to hot, arid rocky habitats in southern



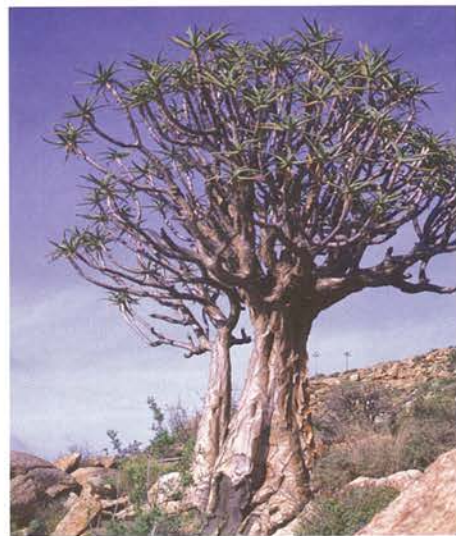
Whitish powder on the smooth branches gives the tree a shining appearance on sunny days.



Where quiver trees occur close to the coast of Namibia, frequent fog can provide a significant moisture source in this low rainfall region.

Namibia and adjacent South Africa, where it can live more than 80 years and reach heights of over 20 feet. Often the only tree in its habitat, it provides sites for the outsized communal nests of weaverbirds, which can house up to 300 families of these social birds, keeping their eggs and young safe from predators such as jackals and snakes.

Seen from a distance, the tree has a shining appearance when sunlight is reflected from a thin layer of whitish



Quiver trees are often the only trees in their extreme desert habitat. They are most often found on the north, sunniest side of rocky hills.

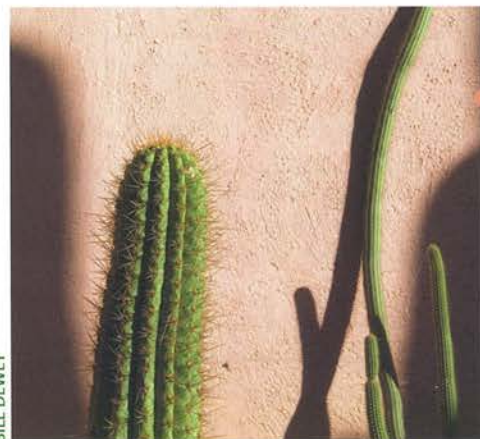
powder on the smooth branches. This adaptation to its extreme desert habitat helps reduce the heating effects of the hot sun. The base of the tree can be up to three feet in diameter, and the trunk develops golden brown scales with razor-sharp edges. The trunk is topped by a rounded crown formed by repeated forked (dichotomous) branching, with each branch bearing a terminal rosette of blue-green, toothed leaves.

—Steven Timbrook

Digital Photography Workshop

WITH BILL DEWEY

SATURDAY, SEPTEMBER 29 • 9:00 AM TO NOON



A composition of Lotusland cacti and their shadows captured by Bill Dewey.

PHOTOGRAPHER BILL DEWEY will lead a digital photography workshop at Lotusland on Saturday, September 29. The workshop will give photographers an opportunity to explore composition from landscape views to close-ups and to capture nature in a pure and artistic form with the aid of Bill's technical and aesthetic expertise.

No stranger to Lotusland, Bill has photographed its gardens since the Lotusland Foundation started in 1984. His photographs of the garden appear in the two Lotusland books, *Lotusland: A Photographic Odyssey* and *Lotusland:*

The Garden and its Creators, and have illustrated numerous articles about Lotusland in such magazines as *Sunset* and *Smithsonian*. Most recently, Bill's aerial photos of Bixby Ranch appeared in the *Los Angeles Times West* magazine. He is a member of the Santa Barbara Oak Group. A current exhibition of his work titled "Waves" is at the Marcia Burt Studio in Santa Barbara.

Beginners and seasoned photographers are welcome. Space is limited and will fill quickly, so please register early by using the coupon on page 19.

—Dorothy Shaner

Volunteer Profile: Lynne Scott

LEARNING, SHARING AND MAKING A DIFFERENCE



DEBBIE HILD

Lynne Scott

Before moving to Ventura, Lynne complemented her degree in Fine Arts from California State University, Northridge with many courses in both interior and landscape design at UCLA Extension. This allowed her to develop a successful landscape business specializing in small gardens.

Lynne's move from Los Angeles to Ventura presented new challenges for her personal gardening experience. Her new home just steps from the beach brought sand, wind and salt air—all things that would create havoc with most of the plants with which she had grown familiar. Energized by the challenge, she proceeded to learn and adapt and successfully created a beautiful garden in a space she describes as, "larger than most beach house yards."

Lynne returned to Lotusland on a docent-led tour in 1999, when she was inspired to become a Lotusland member and delighted in receiving the newsletters. It was in one of the newsletters that Lynne first learned about the docent program. She was intrigued by an invitation to what was billed at that time as the "Prospective Docent Tea."

She was thrilled to hear that she did not have to wear "hat and gloves" to the "tea" and says that once she heard the presentation about the program that offered "so many wonderful classes," she was hooked.

A treasured volunteer, Lynne leads regular public tours, as well as fourth grade outreach tours, and she recently signed on for extra duty as a classroom presenter. Always cheerful and considerate, Lynne is appreciated by docents and staff alike for her willingness to lend a hand wherever help is needed. She can be seen at the annual succulent wreath-making workshop and the Members' Family Day craft booth, behind the scenes at *Lotusland Celebrates* and assisting new docents-in-training as a mentor.

Her generous nature leads Lynne to share her enthusiasm for plants with a variety of visitors. Receiving applause and a "big bear hug" once at the end of a tour for adults with special needs, she felt that she had made a difference in their day. We know she has made a difference at Lotusland.

Thank you Lynne, for everything you do for Lotusland. —Debbie Hild

LYNNE SCOTT is passionate about being a volunteer at Lotusland. Like so many others who offer their time in service to Madame's incredible garden, she felt an immediate connection with Lotusland when she first visited in 1993 with Don Rodriguez's Ventura College plant identification class. Lynne says, "I had never seen anything quite like it, yet it felt so familiar. It was as if I had come home."

SAVE THE DATE

Music at Lotusland

AN AFTERNOON OF JAZZ WITH JOHN PIZZARELLI

SUNDAY, SEPTEMBER 30 • 3:00 PM

"A master guitarist, connoisseur of songs, mimic and storyteller."
—Stephen Holden of *The New York Times*

LOTUSLAND IS THRILLED to welcome John Pizzarelli to perform at our second annual *Music at Lotusland*. An internationally known jazz guitarist and singer, Pizzarelli has released 21 albums and has been widely hailed as "captivating" by live audiences. Join us for a fabulous afternoon of music and entertainment and a reception following the performance in the beautiful gardens of Lotusland. Invitations will be mailed to members in early September.

For information about being a *Star* at \$5,000 (four prime reserved seats, two VIP parking passes, a signed CD, recognition in the invitation and program, and entrée to a private reception with John Pizzarelli) or an *Aficionado* at \$1,000 (two prime reserved seats, a VIP parking pass, recognition in the invitation and program, and entrée to a private reception with John Pizzarelli), please contact Anne Dewey, Director of Development, at 805.969.3767, extension 105 or e-mail andewey@lotusland.org.



TIMOTHY WHITE

Volunteer Appreciation Picnic

LOTUSLAND SAYS THANK YOU

LOTUSLAND IS VERY FORTUNATE to have more than 200 dedicated volunteers who share their time and talents at the garden. They lead tours, staff the Garden Shop, work in the library and archives, help maintain the grounds, work behind the scenes at events, and assist with a variety of administrative tasks.

Each year, on the third Monday in June, the Lotusland staff holds a program in the theatre garden, followed by a picnic on the main lawn, to thank all of our volunteers for their service to the garden. The date always falls near Ganna Walska's birthday (June 21) so marking her birthday is a part of the celebration. Volunteers were entertained by accordion music played by longtime docent Helene Mussbach and her associate Arturo Perez.

Director Emeritus Steven Timbrook welcomed and thanked the volunteers, Curator Virginia Hayes thanked the garden maintenance volunteers for their skillful assistance to our garden staff, Garden Shop Manager Karen Kester expressed her gratitude to the Garden Shop associates for being wonderful ambassadors, and Public Programs Manager Dorothy Shaner thanked docents for being responsible, flexible, and patient. She also thanked our 27 Outreach Docents for their exceptional service to



John Vasi was crowned the 2007 "King of Lotusland" for his outstanding service during the past year. The crown is adorned with seeds, pods, "jewels" and a peacock feather. His scepter is crafted from small branches topped with a dried lotus pod.



Barbara Dixon (LEFT) was a recipient of a handmade Madame Ganna Walska pin for her 10 years of outstanding service as a docent and tour facilitator. Public Programs Coordinator Debbie Hild presented the awards.

the Santa Barbara community.

Public Programs Coordinator Debbie Hild recognized several volunteers for particularly outstanding service. Coveted handmade pins with a picture of Ganna Walska surrounded by "jewels" were among the prizes awarded. Continuing a tradition begun in 2005, a "royal" award was given to a volunteer who demonstrated a willingness to assist in a variety of ways and who has

cheerfully made Lotusland a priority in their lives. Last year's recipient, Lynne Scott, crowned John Vasi as the "King of Lotusland" for 2007. Debbie also awarded "years of service" stickers, to be affixed to volunteers' name badges, to those who have given 5, 10, 15 and 20 years of volunteer service.

A highlight of the annual picnic is a drawing for a dozen Lotusland plants especially potted for this event.



PHOTOS BY VIRGINIA HAYES

Three cakes decorated with edible photos of Ganna Walska, to mark her birthday, were enjoyed by all.



Docents Mary Ellen Hoffman and Laurie Wolf enjoyed the delicious buffet on the main lawn after the program in the theatre garden.

Lotusland Members

We Welcome New Members Who Joined in March, April and May 2007

LEVEL IV

Ms. Eleanor Seegman

LEVEL III

Bamboo Pipeline,

Matthew J. Fay & Martin Senn

Harry & Sharon Felder

Ms. Cheri Gable

Ms. Mary McMaster & Mr. Paul Casey

Gretchen & Jack Norqual

LEVEL II

Ann & Robert Alan

Ms. Leslie Allfree

Ms. Gwendolyn Baker

Mr. & Mrs. Parker Beebe

Mrs. Faith Bishock

Mrs. Barbara Bradbury

Mr. & Mrs. Michael Brovsky

Mr. & Mrs. Ernest A. Bryant, III

Mr. Van Dyk Buchanan

Mr. & Mrs. Brett Caine

Mr. Chris Clemens

John & Maryann Cossentine

Mr. & Mrs. Vincent Diglio

Ms. Cindy Doeher & Ms. Sierra Doeher

Ms. Cheryl Doherty

& Mr. Edward Decter

Ms. Claire Estes

Ms. Sybil Fickett-Jones

Mrs. Mary Jo Flanagan

Jim & Nori Francis

Ms. Ursula Franck

Mrs. Carole Frazier

Linda & Arnie Gorin

Ed & Ann Hammond

Darleen & Walter Hansen

Mrs. Lynda Hay

Jim & Linda Hone

Mr. Craig Kendrick

Gordon & Sharon Krisher

Ms. Linda Liu

Mr. Keith J. Mautino

Mr. D. Scott McCracken,

SunRest Designs, Inc.

Mr. & Mrs. Ron Mickelsen

Jonathan & Heather Moch

Ms. Gloria Moyer

Ms. Maria Ferrer Murdock

Bob & Holly Murphy

Ms. Janice Nagler

Joanne & Charles Neubauer

Mr. Donald Olson

Kathleen Ostridge & Adrienne Pierce

Ms. Kim Pasini

Mr. George Reich & Mr. Albert Chaing

Dr. & Mrs. Jeff Rodnick

Mr. & Mrs. Leonard Sasso

Ms. Rhonda Seiter & Ms. Jillian Seiter

Mr. David Stone

& Ms. Barbara Schwartzberg

Ms. Amy Super

Ms. Jeanette Taylor & Mr. Ryan Moore

Rose & Jack Herschorn,

The Sacred Space

Ms. Raissa Veronique

Ms. Josie Villasenor

& Mr. Hector Trujillo

Mrs. Suzanne Weniger

Mr. & Mrs. Tim Werner

Mr. & Mrs. Mark Wilson

Marleen & Karen Young

LEVEL I

Ms. Emily Abbott

Ms. Violet Ahlquist

Mr. Richard Andrews

Ms. Marie Azzaria

Deborah & Paul Baker

Ms. Barbara Bartolomé,

Santa Barbara Scrapbooks

Kristen & Thomas Blabey

Mr. Christopher Blair

Mr. & Mrs. David Bourgeois

Ms. Darya Bronston & Mr. Matt Arf

Mr. Robert Camou

Reid & Robin Cederlof

Ms. Lucie E. Curtiss

Ms. Bernadette DiPietro

Ms. Mary Doyle

Ms. Anne Dupee

Mr. & Mrs. Steven H. Durham

Susan & Holland Ealum

Ms. Kumi Eastman & Mr. David Kacerek

Mr. & Mrs. Rickey Farbman

Mrs. Denise Fellows

Ms. Jane Ferguson

Mr. Forrest Fields

Ms. Lynn Funklesrude

& Mr. Eugene Broom

Ms. Stephanie Galli

Mr. & Mrs. Tim Gilles

Mrs. Edith Greene

Mr. Dale John Hekhuis

David & Lisa Hekhuis

Ms. Anne Hellman

Ms. Barbara Hill

Ms. Bojana Hill, Laguna Blanca School

Mr. & Mrs. William P. Hinderer

Ms. Patty Hopkins-Acos

Ms. Marty Ingraham

Mrs. Miyako Izzo

Continued on page 18

Members Who Have Increased Their Level of Support

March, April and May 2007

GARDEN SPONSOR

Jack Mithun & Mercedes Millington

Mrs. Edward E. Stepanek

LEVEL IV

Ms. Therese Cummings

Mr. & Mrs. John K. Pearcy

Clifford & Crystal Wyatt

LEVEL III

Mr. & Mrs. Paul Comstock

Ms. Jane Gail Copelan

Mrs. Colette Hartman

Shirley & Seymour Lehrer

Mr. & Mrs. Steve Maffioli

Mr. & Mrs. Stephen Parry

Wayne & Sharol Siemens

Ms. Christie William

Katie & Frederick Williamson

LEVEL II

Dr. Susan Brown

Ms. Carolyn Butcher

& Mr. Michael Perry

Major Gen. & Mrs. Philip J. Conley

Mr. & Mrs. Robbie Jacobs

& Ms. Marley Jacobs

Mr. & Mrs. David H. Kent

Ms. Jill Dore Kent

Mr. & Mrs. Eddie Langhorne,

Firefox, Inc.

Mr. & Mrs. Peter Lowe

Mr. & Mrs. Jack Morrison

Dana Newquist & Andrea Eltinge

Madeline & Julio Petrini

Mr. Jeffrey F. Romano

& Mr. Stan A. Shayer

Mr. & Mrs. James Ruh

Mrs. Arthur Shafer

Ms. Holly Sherwin

Mr. & Mrs. Tim Thomson

Ms. Nina Warner

Continued from page 17

Ms. Diana Jauchen
Mr. Kim Johnson
Ms. Beverly King
David & Lorna Kirk
Ms. Lisa Knust
Ms. Valerie Kurokawa
Ms. Natasha Landau
Mr. Peter Lehman
& Mrs. Natalie Lewis-Lehman
Ms. Darrel Marsh
Francisco & Susanne Martin
The Matthews Family
Dr. & Mrs. Mainhard Mayer
Mrs. Drew McKenna
Leslie & Richard McKenna
Jennifer & Brian Mellor
Ms. Kim Misenheimer
Charles Morison & Jenn Caselle
Richard & Linda Morris

Larry & Beverly Mueller
Mr. Curtis Mulder
Pearl & Tim O'Brian
Andrew & Anne Orfila
Mrs. Beta Ozar
Ms. Rhonda Pardridge
John & Lorraine Pearson
Charles & Maryann Pember
Mr. & Mrs. Thomas Pettit
Mrs. Janice Rhoads
Jennifer & Peter Richardson
Ms. Rebecca Riskin
Jack & Marge Robinson
Mr. Ralph Robinson
Dr. & Mrs. David Ruderman
Ms. Colleen Russell
Mr. Chris Russo
Mr. Gary Salmen & Ms. Marketa
Pospech
Mr. Ronald Severa

Ms. J.P. Sharp
Mr. Patrick Shove
Dr. Terence Smith
Mr. Brian Soderstrom
Lorae & John Stolpp
Ms. Julie Stuva
Mr. & Mrs. Roger Swallow
Ms. Janis A. Thomas
Mr. Robert Turner
& Mrs. Norma Moreno
Mr. Michael Tyler
& Ms. Amy Schustack
Ms. Kim Valentine, Laguna Blanca School
Rocio & Gabriel Watson
Ms. Lee Weiser, Laguna Blanca School
Mr. & Mrs. Peter Wilkens
Mr. & Mrs. Stuart T. Wilson
Mr. & Mrs. Kelly Yturralde
Ms. Karen Zacha
Robert & Joan Zukin

Lotusland Gratefully Acknowledges Donations

March, April and May 2007

ANNUAL APPEAL

GENERAL FUND

Mr. Ruben R. Flores
Mrs. Hunter Foster,
The Pacer Foundation
Dr. & Mrs. Jerald Somdahl

LOTUS SOCIETY

Mr. & Mrs. Philip Bernstein,
Bernstein Family Fund
Mr. & Mrs. Thomas Crawford, Jr.
Ron & Desiree Kaye
Adele & Loi Nguyen

LOTUS SOCIETY CONTRIBUTORS

Linne Calodo Wines
Hotel Cheval
Mr. John F. Saladino & Ms. Betty Barrett

GRANTS

Anonymous
High Tide Foundation
Marisla Fund
Mid-State Bank & Trust Foundation
Henry E. & Lola Monroe Foundation
Harold Simmons Foundation
The Christine & Ed Snider Foundation
The Towbes Foundation
The Elizabeth Firth Wade
Endowment Fund
Wallis Foundation, Jack Baker

MATCHING GRANT

Nordson Corporation, Matching Gifts
Program directed by David Berns

ARCHIVES

Mary Shelton

GENERAL DONATIONS

Anonymous
Mr. & Mrs. Peter Adams
Mr. & Mrs. Robert C. Bodine
Mr. & Mrs. Michael Champion
Mr. & Mrs. Bruce Crary
Jack Dalton
Ms. Ursula Franck
Dr. & Mrs. Jerry Haber
Mr. & Mrs. Bob Hill
Mr. & Mrs. Joseph E. Jannotta
Mr. Richard A. Johnson
Mr. & Mrs. Harry Kolb
in honor of Carol Valentine
Mr. Harlis Maggard
Christy Maxfield in appreciation
of a tour with Larry Disharoon
Ms. Lorraine M. McDonnell
& Mr. M. Stephen Weatherford
John & Elizabeth McGovern
Ms. Lori Kraft Meschler
for Butterfly Garden plants
Jack Mithun & Mercedes Millington
Ava Morouse
Mr. Eric Nagelmann
Mr. & Mrs. James C. Nonn
Pratt & Whitney Rocketdyne
in honor of Nancy Wood
Mrs. Richard H. Roberts
Mr. & Mrs. James Ruh
Lynne & Gary Scott
for Butterfly Garden plants
Mrs. Alice Stephenson
Ms. Julia Stevens

Mr. & Mrs. Gunnar Sundstrom
Ms. Louise E. Thielst
United Way donation
directed by Lori L. White

PLANTS

Grandfolia Interior Landscapes
Mr. & Mrs. Richard McDonald
Eric Nagelmann
Weeks Roses

GIFT MEMBERSHIP DONORS

Ms. Dayna Birkley
Patrick & Janet Boyle
Mr. & Mrs. Nigel Buxton
Ms. Jane Gail Copelan
Donna Diglio
Ms. Anne Dupee
Mr. & Mrs. Richard Eiler
Mr. Steven Fellows
Ms. Karin Fickett
Mrs. Naomi Fujioka
Mr. Dale John Hekhuis
Mrs. Laure Kendrick
Pat & Diana McDonough
Mrs. Meredith McKittrick
Mrs. Richard Montanaro
Ms. Delia Moon
& Ms. Jaclyn Henretig
Miss Jessica Ozar
Mrs. Sandra Shove
Bruce & Pamela Smith
Mr. Leonard Somdahl
Eileen & David Stempel
Ms. Suzan Webb
Mrs. Kathleen West

Ganna Walska Lotusland Registration Form

PAYMENT METHOD: ☐ Check enclosed ☐ VISA ☐ MasterCard ☐ AMEX Expiration date _____

Card number _____ Signature _____

Member name _____

Address _____ Phone _____

*Fees are refundable only if cancellation is received one week before class or event.
If minimum enrollment is not reached, classes and lectures may be canceled.
No phone reservations, please.*

Mail to: Ganna Walska Lotusland, Attn: Member Events, 695 Ashley Road, Santa Barbara, CA 93108

LotusFest!

Saturday, July 28 • 2:00 TO 5:00 PM

\$60/members • \$75/nonmembers

No. of people attending _____ No. of cars _____ Total \$ _____

Summer's Evening Twilight Tour

Saturday, August 25 • 4:30 TO 7:30 PM

CHECK ONE: ☐ Docent-guided tour ☐ Self-guided tour

\$50/members • \$65/nonmembers

No. of people attending _____ No. of cars _____ Total \$ _____

Digital Photography Workshop

With BILL DEWEY

Saturday, September 29 • 9:00 AM TO NOON

\$55/members • \$65/nonmembers

No. of people attending _____ No. of cars _____ Total \$ _____

Garden Sponsors, Benefactors and Patrons Enjoy Special Benefits

OUR GARDEN SPONSOR, BENEFACTOR AND PATRON membership levels
include unlimited free admission to Lotusland and an invitation to a very special event.

This year Joey Pearson is hosting a cocktail party in October at her beautiful home and garden.
Invitations will be mailed to Garden Sponsors, Benefactors and Patrons in September.

For more information about these membership levels, please contact Anne Dewey, Director of Development,
at 805.969.3767, extension 105, or e-mail andewey@lotusland.org.

Ganna Walska Lotusland Foundation

695 Ashley Road
Santa Barbara, CA 93108
Address Service Requested

Nonprofit Org.
U.S. POSTAGE
PAID
Santa Barbara
California
Permit No. 163



Summer and Fall 2007 Member Events

MANY LOTUSLAND EVENTS are open to nonmembers, so please let your friends and neighbors know about the great activities we offer. Children are welcome at many events, and Family Tour Days are every Thursday and the second Saturday of each month (see the listing below). We hope to see you at Lotusland.

Sunday, July 22

*Lotusland Celebrates
Peter Pan's Lotusland
Where You Never Grow Up!*
4:00 TO 8:00 PM

Invitations were mailed to all members in early June. For questions, please call 805.969.3767, extension 112.

Saturday, July 28

LotusFest!

2:00 TO 5:00 PM

See details on page 4 and use the coupon on page 19 to register.

Saturday, August 25

Summer's Evening Twilight Tour
4:30 TO 7:30 PM

See details on page 6 and use the coupon on page 19 to register.

Saturday, September 29

*Digital Photography Workshop
with Bill Dewey*

9:00 AM TO NOON

See details on page 14 and use the coupon on page 19 to register.

Sunday, September 30

*Music at Lotusland: An Afternoon
of Jazz with John Pizzarelli*

3:00 PM

See details on page 15.

Saturday, October 20

Holiday Wreath Making

Details will be in the Fall issue of the *Lotusland Newsletter for Members*.

Saturday, October 27

Halloween Twilight Tour

Details will be in the Fall issue of the *Lotusland Newsletter for Members*.

Family Tours

Family tours for all ages are offered every Thursday at 10:00 AM and 1:30 PM and the second Saturday of each month at 10:00 AM and 1:30 PM (except between mid-November and mid-February). Family tours are child and parent friendly and are separate from regular adult tours. Adult members \$35 or use admission passes; ages five to 18, \$10; four and under, free. Call 805.969.9990 for reservations 9 AM-5 PM, M-F and 9 AM-1 PM on Saturdays.

Renew Your Membership Online

It's fast. It's easy. It's secure.
www.lotusland.org