



## New Garden for the Dunlap Collection

By VIRGINIA HAYES

FOR THE SECOND TIME in the history of the Ganna Walska Lotusland Foundation, a totally new garden area is being designed and planted. The first was the Visitor Center and parking area designed by Sydney Baumgartner and completed for the official opening of the garden in fall of 1992. In a garden where design is as important as anything else and with the legacy of dramatic garden spaces that Madame Walska created, the task of conceiving a new garden at Lotusland is quite daunting. Merritt Dunlap's very generous donation of his magnificent cactus collection provides this challenging opportunity again.

This impressive collection of more than 500 cacti contains about 400 different species. Nearly 300 of these are new to Lotusland. An added value is the excellent documentation about the origin of these plants. Dunlap grew about 40 percent of them from seed obtained either from collectors or known nursery sources. The size and extent of the collection necessitates its planting in an entirely new location at Lotusland. Of the few available sites, only one seemed ideal.

The new garden will occupy nearly three-quarters of an acre on the eastern edge of the property. The main entrance will be on either side of the fountain at the end of the olive allée (the back side of which will prominently display the names of significant donors to the project). Paths will snake between raised beds buttressed by large boulders, converging

*Continued on page 2*



PHOTOS BY VIRGINIA HAYES

*Some of Dunlap's cacti were too large to move without pruning. The cuttings from them are growing new roots in a temporary cold frame.*

### IN THIS ISSUE

New Garden for the Dunlap Collection	1	The Lotus Society	3
Lotusland's Best Management Practices: Management of Oak Root Fungus	4	Upper Level Members Thanked	9
Winter Birds at Lotusland	5	Volunteer Profile: Lori Kraft Meschler	10
New to the Collections	6	Travel with Lotusland Gardens and Opera in Santa Fe	11
Thailand Hosts International Conference on Cycads	7	Kisa Heyer Joins Lotusland's Board of Directors	12
Creativity and Innovation	7	Give a Holiday Gift of Awe and Wonder	12
The Wonderful Hats of Ganna Walska		2003 Member Events	15



## THE LOTUSLAND NEWSLETTER FOR MEMBERS

is published by  
Ganna Walska Lotusland Foundation  
695 Ashley Road  
Santa Barbara, California 93108  
(805) 969-3767  
www.lotusland.org

*Board of Trustees*

Robert J. Emmons, *President*  
Anne W. Jones, *Vice-President*  
Arthur R. Gaudi, *Secretary/Treasurer*

Ella Brittingham  
Merryl Brown  
Elizabeth W. Dake  
W. Mason Farrell  
Kisa Heyer  
Thomas Hugunin  
Harry W. Kolb  
Sandra Nicholson  
Stanya Owen  
Barbara Siemon  
Michael Towbes  
Carol L. Valentine

Steven Timbrook, Ph.D.  
*Executive Director*

Connie Buxton  
*Director of Public Programs*

Anne Dewey, CFRE  
*Director of Development*

Marguerite Gamo  
*Manager of Administration  
and Human Resources*

Virginia Hayes  
*Curator of the Living Collection*

Mike Iven  
*Grounds Superintendent*

Deanna Hatch, *Editor*  
Lindse Davis, *Design*  
*Printed by Ventura Printing*



Printed on recycled and recyclable paper

*Continued from page 1*

on an elevated viewing terrace near the center of the area. Stunning natural blocks of basalt will create more drama, as if 500 or more cactus plants weren't dramatic enough! An alternate entrance to the garden is also planned from the lawn across from the theatre garden. Both entrances will contribute to that sense of surprise and wonder that visitors to Lotusland enjoy as they move from each garden to the next very different one just by rounding a corner.

Planting beds in the new garden

will display the collection in more or less geographically coherent groups. This not only makes sense for educational reasons, but also clusters plants from similar climate zones together for efficient maintenance. Besides, Merritt Dunlap's garden in Fallbrook was divided geographically, too, and this scheme honors his original vision. A few accent plants from families other than the Cactaceae will enclose the garden and provide contrast and interest. As sufficient funding is received, a rest center will be added for the comfort of regular visitors and the convenience of guests at special events in the theatre garden.

Any new garden at Lotusland must attempt to provide elements in keeping with the other specialty plantings. There should be masses of similar plants, interesting rocks and/or minerals, and surprising vistas. The visitor should not only be struck by the magnificent specimens, but be enchanted through an altered sense of space and seduced by visual riches. Who could approach such a project with creativity and vision? This undertaking requires a designer who



*Most of the collection is recovering in raised planting beds under a protective shade structure.*



*Thirty-one of the larger specimens were boxed and braced for the long ride from Fallbrook.*

loves and understands Madame's creation, one who has a flair for the dramatic of his or her own as well. While a number of names were suggested, one kept recurring: Eric Nagelmann.

Nagelmann, a Santa Barbara native, has been planting gardens since he was a child. In fact, plants have been a major obsession most of his life. Fortunate to have been a student at Santa Barbara High School when it had a thriving horticulture curriculum, Nagelmann received a good foundation in landscaping that led to a career in garden maintenance and design. Other influences would shape his evolution, including the unique climate and horticultural heritage of Santa Barbara itself. One of his early collaborations was with artist Jack Baker, whose legendary garden is an overwhelming collection of exotic plants woven into a living fantasy.

After stints at the estate of Dame Judith Anderson, the Bass Estate (*Casa del Herrero*), and other Montecito gardens, Nagelmann began in

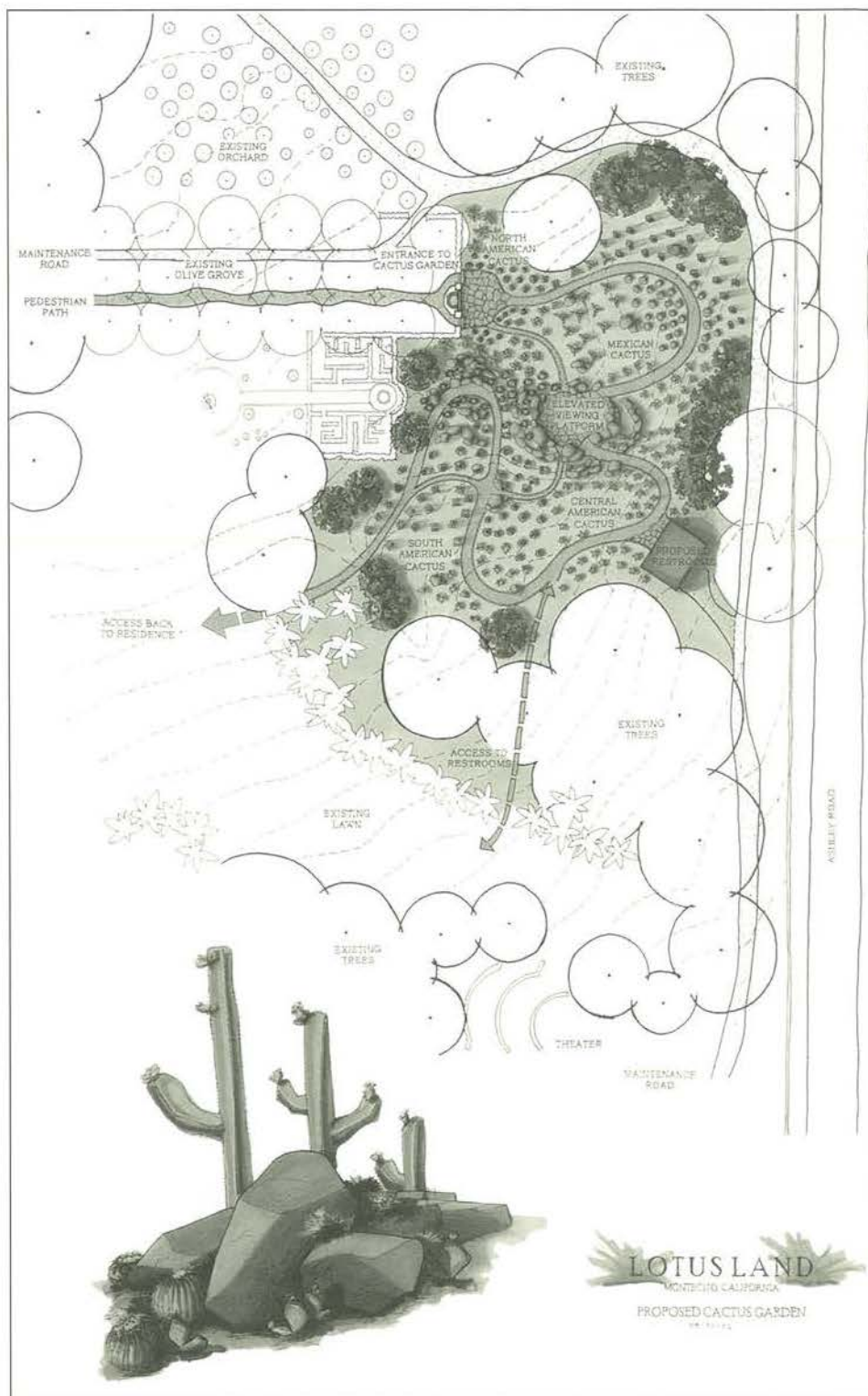




*Eric Nagelmann's face will be a familiar one in the coming year as the new cactus garden takes shape.*

earnest to design new gardens for an expanding list of discriminating clients. While most of his work is in the Santa Barbara area, recent projects also include gardens in Los Angeles, Santa Fe, Big Sur, and even Hong Kong. His style is one of bold textural contrasts, whether the plants used are lushly tropical, such as bananas, or spiky desert-growing cacti and succulents. Nagelmann's gardens are exciting to the senses. A walk in one of them will surprise and delight the viewer, for humor is also one of the elements he likes to employ. Nagelmann is passionate about plants, and his gardens reflect that intensity of emotion.

Nagelmann is also a fan of Lotusland and Madame Walska's vision. The opportunity to design a new garden for the Foundation was one he embraced immediately, and he is donating his design and consultation services to the project. The fact that it is a collection of cacti is just an added bonus. Cacti and succulents are his new favorite plants (the garden at his new home in Carpinteria will be "all cacti and succulents" according to Nagelmann).



*Nagelmann's cactus garden concept, as drawn by Jeremy Roberts, AIA.*

His conceptual design plays with that feeling of fantasy so often encountered at Lotusland. Since many of the cactus species in the collection are columnar, Nagelmann imagines massing them together to tower over the visitor—an experience designed to astonish and charm even the most

academically minded plant-lover.

If all goes well, grading and planting will begin as soon as the weather permits early in 2003. Approximately one year later, we will invite you to "celebrate what we can do with plants," as Nagelmann characterizes his work.



## LOTUSLAND'S BEST MANAGEMENT PRACTICES

# Management of Oak Root Fungus

OAK ROOT FUNGUS, *Armillaria ostoyae*, formerly *A. mellea*, is also known as Armillaria root rot, honey fungus, and shoestring root rot. It is a naturally occurring soil fungus that helps to decay or decompose woody material. Unfortunately, it can attack living trees, shrubs, and other plants as well. A white mass of branching fungal filaments known as a mycelial fan can usually be found between the bark and the wood near the root collar area of infected plants. Insect infestations, disease pathogens, poor soil conditions, injuries, improper cultural and maintenance practices, and other factors causing stress to landscape plantings can predispose a plant to an oak root fungus infestation. Although there are no chemical treatments available to control it, the following practices will help promote conditions for landscape plants to thrive and thereby resist an oak root fungus infection that could lead to plant losses.

### ORGANIC MATTER

REGARDLESS OF WHETHER OR NOT the pathogen is present in the soil, the addition of appropriate quantities of organic matter in the form of mulches, manures, and composted materials to and on the soil is beneficial if appropriate to the plant species. Composts and mulch increase the levels of soil microorganisms such as beneficial fungi and beneficial bacteria. This increase in the complexity of the soil food web suppresses the activity of pathogens and retards disease development.

### PROVIDE OPTIMAL ENVIRONMENTAL CONDITIONS

A HEALTHY, ACTIVELY GROWING plant can better resist the incursions of the pathogen. Proper nutrients, water, temperature, light, and drainage promote plant health.



Oak root fungus attacks a wide range of plants and killed this cycad. The white fungal mat can be seen just under the bark.

JOHN LAFLEUR

### PLANTING PRACTICES

PROMOTING ROOT GROWTH may help to compensate for damage to the root system from oak root fungus. Planting in holes wide enough to promote rapid root growth, combined with good nutrition, may result in good root growth that will allow the plant to compensate for damage caused by pathogens.

### GOOD DRAINAGE

ENSURE THAT DRAINAGE is adequate to prevent water logging, which promotes disease. Proper planting methods should minimize drainage problems, and the installation of a subsurface drainage system prior to planting can be considered for sites with poor drainage.

### PLANT MATERIAL

DO NOT PLANT MATERIAL that is pot bound, diseased, or deformed as it will be more susceptible to disease. Never attempt to propagate diseased or even marginally healthy plant material.

### PLANTING SITUATIONS & IRRIGATION PRACTICES

IN NATURAL SITUATIONS in southern California, oak root fungus is rarely a fatal plant disease, and oaks have co-existed with it for centuries. Their survival is possible as long as they are not irrigated during the summer when oak root fungus is most active.

Improper or ill-advised irrigation practices and grade changes in managed landscapes can lead to conditions that promote the spread of oak root fungus and result in plant loss. Planting and watering underneath a California live oak and/or raising the grade in the root zone just a few inches can be enough to cause the tree to decline and may shorten its life significantly.

### SANITATION AS A MEANS TO REDUCE INFECTION

SANITATION OF TOOLS, machinery, and even boots is very effective in limiting the spread of many plant diseases. Although oak root fungus does





JOHN LAFLAUR

Mushrooms of armillaria may appear at the base of infected plants in the fall after wet weather. The mushrooms are an indication of the presence of the pathogen, but not usually a source of new infections. Many different fungi that feed on decaying wood also produce mushrooms, so identification is important in detecting the presence of oak root fungus.

spread and infect new areas by the underground growth of root-like structures, cleaning tools and equipment before working in a new area or with a different plant can decrease the chance of infection.

### ISOLATE INFECTED PLANTS

NEVER MOVE PLANTS from an infected site to an uninfected site. When removing a plant infected with oak root fungus, it is essential to remove as much of it as possible, including the roots, as the pathogen may persist in living and dead tissue for many years.

### SUMMARY

- Keep the root crowns of oaks and other susceptible plants dry. Adjust irrigation emitters so they face away from the trunk.
- Manage irrigation so that the soil has a wet/dry cycle. Not even

ferns like to be kept at saturation point continuously.

- Plants that suffer from cultural and/or environmental stress are more prone to oak root fungus infestation.
- A complex soil food web offers the maximum resistance to soil diseases such as oak root fungus. Cultural practices that enhance the soil food web bio-diversity help create natural disease suppressant qualities in the soil.

—Mike Iven

*Lotusland's Best Management Practices (BMPs) and additional horticultural information can be found on the Lotusland website:*

[www.lotusland.org](http://www.lotusland.org)

*New and updated BMPs are added to the website regularly.*

## Winter Birds at Lotusland



INTERESTED IN DOING SOME BIRDING at Lotusland? We've set aside the morning of Saturday, February 15, for a guided walk focusing on those birds that are spending the winter here while avoiding the cold and snow

of their summer homes. Sound familiar? It's how the Gavit family got interested in Santa Barbara and decided to build *Cuesta Linda* and one of the reasons Madame Walska created Lotusland.

All are welcome, from beginner to hard-core life lister. Your guides will be Jeff Chemnick, Lotusland volunteer, cycad expert and long-time birder, and Executive Director Steven Timbrook, who has been birding locally since 1965. Both know their birds and Lotusland well, and look forward to getting a nice diversity of species with your help in looking for them. We will have three pairs of binoculars to loan if you need them.

See coupon on page 15 to register.



VIRGINIA HAYES

*Following his extremely popular cycad presentation on November 16, Loran Whitelock autographs his book, *The Cycads*, for guests.*



## New to the Collections

A MIXED LOT of interesting succulent plants came into the collection recently. These were all part of the Huntington Botanical Gardens' International Succulent Introductions program whose aim is "to propagate and distribute new or rare succulents." All are either new to collectors or rare in the horticultural world. Lotusland is an official repository for these introductions, which allows us to enhance our collections as well as provide a backup source of plant material should any of the holdings be lost elsewhere.

Two cacti have a known point of origin, but an ambiguous identity. The first will be listed in the records as *Espostoa* sp. until someone gives it a better name. It is related and similar in appearance to our old man cactus (*Espostoa senilis*) and in fact will look much like a dwarf version of that cactus. The other is a species of *Opuntia*, a large and widespread genus including many beavertail type species similar in appearance to this one. The origin of this plant makes it a rarity. By all accounts it was originally collected on the southernmost of the Galapagos Islands, Española (also called Hood Island), but given the name of a different



*Cotyledon woodii*, another member of Crassulaceae, and close relative of the more common jade plant, recently joined our succulent plant collection.

species from the one occurring there. For now, it will be recorded as *Opuntia echios* and any changes to this information will be noted.

Several new plants in the succulent family Crassulaceae were among the offerings. Two subspecies of *Cotyledon tomentosa*, *C. tomentosa* subsp. *ladismithiensis* and *C. tomentosa* subsp. *tomentosa* will eventually find their way into the succulent garden. Both

have plump fuzzy leaves that just beg to be touched and diminutive, but showy, flower stalks. The dwarfish *Aeonium sedifolium* will form low mounds of small-leaved rosettes as time goes by. Newly named *Echeveria compressicaulis* has dramatically colored dark purplish or brownish leaves and orange flowers. *Kalanchoe grandidieri* may eventually form a small tree covered with matte green leaves and cracked and peeling bark on the stems, and *Dudleya caespitosa* is a chalky white stemless succulent that takes to sun or partial shade.

Other additions include three new aloe species, two from Madagascar and one from South Africa, that should thrive in our aloe garden. One last succulent plant in an unlikely family is *Pelargonium cotyledonis* in the Geraniaceae. It hails from the island of St. Helena not quite halfway between Africa and South America in the South Atlantic Ocean. This small shrub naturally assumes a bonsai aspect and will join several other interesting potted *Pelargoniums* on the terrace above the lawn at Lotusland.

—Virginia Hayes



The chalky white leaves of *Dudleya caespitosa* often expand slightly near the tip and appear spoon-shaped.





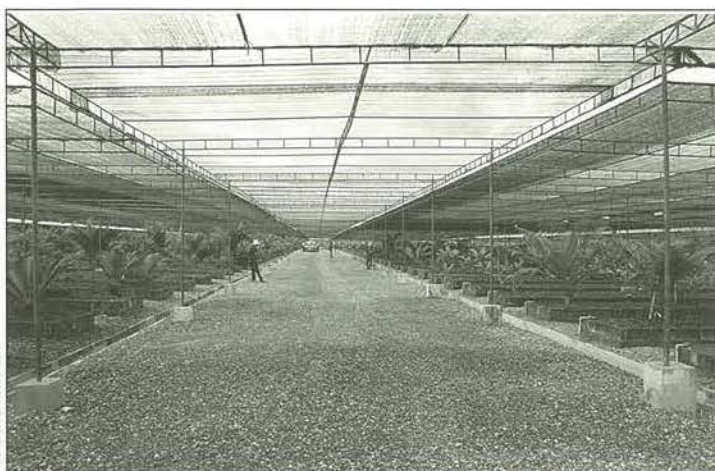
# Thailand Hosts International Conference on Cycads

BECAUSE LOTUSLAND has a significant cycad collection—among the top ten in public gardens worldwide—it's important for us to be involved in ongoing cycad research. Recently our Curator of the Living Collection, Virginia Hayes, attended the Sixth International Conference on Cycad Biology in Pattaya, Thailand. Her presentation, *Renovation of the Ganna Walska Cycad Garden*, was one of many informative sessions made

by presenters from around the world. The Nong Nooch Tropical Garden, which houses what is probably the most complete collection of cycads in the world, hosted the conference. In addition to seeing landscaped areas showcasing cycads, palms, cannas, gingers, heliconias, and myriad other ornamental plants, the conference attendees were allowed access to several acres of research collections.

Virginia was also able to meet with research scientists and lotus and water lily growers in Thailand and had the opportunity to visit the Queen Sirikit Botanic Garden in Chiang Mai, which houses collections of lotus cultivars from both Japan and China.

After the conference, she and other participants traveled throughout Vietnam to view cycads in nurseries and native habitats.



One of many shade structures protecting the extensive research collection of cycads at Nong Nooch Tropical Garden.



Palms and cycads are displayed in dramatic plantings in the public area of the Nong Nooch Tropical Garden.

## SAVE THE DATE

### Creativity and Innovation The Wonderful Hats of Ganna Walska

WITH DALE GLUCKMAN, CURATOR OF COSTUMES AND TEXTILES  
LOS ANGELES COUNTY MUSEUM OF ART

**2 PM, FRIDAY, MARCH 28**

Watch for your invitation to an entertaining and informative illustrated lecture about Madame Walska's fabulous hat collection. Her wonderful and eclectic hats will be on display.

High tea will follow the lecture. This event is generously sponsored by Carol Valentine. Our honored guest, Hania Tallmadge, kindly donated all of the hats that you will see at the event.







## The LOTUS SOCIETY

### MICHAEL TOWBES: GIVING BACK TO SANTA BARBARA

MICHAEL TOWBES joined the Lotusland Board of Trustees in 1992 at the beginning of a ten-year period that has been crucial in Lotusland's development. Mike's guidance during this time and his wealth of experience in residential and commercial development as President of The Towbes Group, Inc., his financial acumen as Chairman of the Board of Montecito Bank &



Michael Towbes

COURTESY PHOTO

Trust and Montecito Bancorp, and his leadership in the Santa Barbara philanthropic community have proved invaluable. From his helpful advice during construction of the Visitor Center to his chairmanship of Lotusland's Finance Committee, Mike has continually played a major role in helping Lotusland move forward in meeting its goals of preservation, education, and conservation.

"To me, Lotusland is unique. It's the most unusual garden I've ever seen. Just walking around a corner takes you into a completely different landscape," Mike responded when I asked what most interested him at Lotusland. "The children's education program is a great opportunity for kids to learn about their environment in a setting that pretty much guarantees they'll be interested."

Knowing that Mike has been involved with a great number of Santa Barbara's cultural, educational, and philanthropic institutions, I was curious to know what his first volunteer activity was in the community. "I was asked to join the Scholarship Foundation of Santa Barbara in its first year of existence. It's amazing to realize that from a beginning of about \$900 in scholarships, the Foundation now awards over \$2 million a year."

Mike and his late wife Gail founded The Towbes Foundation to support education, medical research, the performing arts, and the promotion and preservation of the free enterprise system. Lotusland has benefited from Towbes Foundation grants to restore the horticultural clock, renovate the topiary garden, and most recently to support production of a Master Plan for Lotusland. One of the most important tasks Mike has taken on this year is to co-chair, along with Trustee Mason Farrell, Lotusland's Site and Facilities Committee, a key Master Plan working group.

I asked Mike what it was about *The Lotus Society* that encouraged

him to become a charter member. "I've always thought it was important to give back to the community that has been such a good home for me and my family. By leaving a bequest for Lotusland's endowment, I can keep on giving after I'm gone to support something I believe in."

—Steven Timbrook

### NEW CHARTER MEMBER

THANK YOU to the following new charter member for her generous support.

Mrs. Maurice E. Faulkner

Lifetime membership in *The Lotus Society* is reserved for individuals who help preserve and enhance Lotusland as a unique botanical treasure by contributing \$10,000 or more to the Endowment Fund either as an outright or estate-planned gift.

If you already have made an estate planning provision for Lotusland, please let us know so that we may thank you and include you in *The Lotus Society*. If you would like to know more about *The Lotus Society* and how you can help Lotusland, please call Anne Dewey, Director of Development, at (805) 969-3767, extension 105.

### DIVERSIFY TAX-FREE FROM YOUR APPRECIATED REAL ESTATE

PERHAPS THE MOST POSITIVE development for the financial portfolios of Santa Barbara homeowners is the astonishing growth in local property values over the last decade.

Homes now represent a "hidden asset" for many couples or single persons of retirement age who live in large single-family homes. Like most Americans, they purchased a



large home in their mid-forties when their children were still at home.

With children grown and the home paid for, many have more home and more responsibility than they want. But given the appreciation in their homes, many owners with valuable homes are unwilling to sell and pay a large capital gains tax. Even though a homeowner is allowed a \$500,000 exclusion (\$250,000 if single) of gain on the sale of their principal residence, it may have appreciated to a value in excess of that amount.

Is there a solution? Is it possible to purchase a smaller home that fits your needs and results in zero taxation?

If the home has substantial value, then it may be desirable to sell part for cash and the balance tax-free inside a charitable remainder unitrust. This method can produce greatly increased income. It unlocks the earning potential of the home—usually with no payment of tax.

### The Procedure

- You move out of the home.
- You deed part of the home to a charitable remainder unitrust.
- You and the trustee of your unitrust list the home for sale and sell the property.
- At closing, the proceeds are divided between you and your unitrust.

### The Advantages

- Provided there is no pre-arranged sale, the unitrust can sell your property tax-free inside the trust and reinvest the entire net proceeds undiminished by capital gains tax.
- The unitrust pays you a life-long income of at least 5% of the trust assets, revalued annually.
- When you (and a surviving spouse in the case of a couple) die, your unitrust distributes the remaining trust assets to the charities you specified, such as Ganna Walska Lotusland Foundation.

- You receive an immediate tax deduction for the value of the charitable portion.

With careful planning, all the unitrust benefits—income tax savings, lifetime income, and capital gains tax savings—can offset the taxable sale of the remaining portion of your real estate, resulting in zero taxation. In addition, your gift ultimately benefits Ganna Walska Lotusland and/or a charity or charities of your choice.

Planned gifts and legacy arrangements may qualify you for lifetime membership in *The Lotus Society*, our recognition program for endowment supporters.

For more information about unitrusts and planning opportunities with real estate and other assets, or for a confidential consultation, please call Anne Dewey, Director of Development, at (805) 969-3767, extension 105.

—Sally Walker

## Upper Level Members Thanked



Angela Overy signed copies of her book, *Sex in Your Garden*, after her provocative and entertaining presentation at Lotusland in October. This special event was a gift from Lotusland to thank our upper level members for their support.



Guests enjoyed learning about the life cycle of monarch butterflies and were treated to newly emerged monarchs using their noses as a rest stop. Nick Stonnington for The Stonnington Group, Merrill Lynch, generously underwrote the event. Nick (LEFT) and Executive Director Steven Timbrook (RIGHT) got into the spirit of things.



# Volunteer Profile: Lori Kraft Meschler

## MULTI-PURPOSE VOLUNTEER

LORI MESCHLER'S volunteer activities at Lotusland are amazingly diverse—and very much appreciated. You might see her working in the garden alongside members of Lotusland's grounds staff, sharing her abundant horticultural knowledge with a group of adults on a garden tour, leading fourth graders on a study tour as part of our Fourth Grade Outreach Program, helping out at special events, stuffing envelopes for the Membership Department or even making a holiday wreath to be sold in the Garden Shop.

Originally from Heidelberg, Germany, Lori visited her aunt and uncle in Wisconsin to improve her English and ended up making the United States her home. She made a dramatic change of venue by moving to New York City for a year where she worked as a translator for an international company. It was in New York that she met and married her husband, a mathematician who

was subsequently offered a job in Santa Barbara.

Lori finds Santa Barbara very similar to Heidelberg in that both are university towns, have a strong sense of history and are in a lovely natural setting. Lori finished her education at UC Santa Barbara, where she earned a degree in social psychology. She raised her two children in Santa Barbara and took a very active role in their schools.

Being a self-described "culture vulture," Lori wanted her children to be exposed to good music, so she volunteered with the Santa Barbara Symphony to further that goal. Another cultural icon in the community, the Santa Barbara Museum of Art, was also graced with Lori's capable volunteer efforts, as she was a docent there for a number of years. Her current volunteer activities include the Santa Barbara Botanic Garden, where she enjoys giving tours to schoolchildren.



Lori Kraft Meschler

COURTESY PHOTO

Her first visit to Lotusland was as the guest of one of our dedicated volunteers, Sonja Lane. Lori immediately "fell in love with it" and decided to join the docent-training program in 1999. She especially likes the fact that Lotusland doesn't have "canned" tours and instead gives the docents leeway to create their own unique tours, as long as their information is factual.

An integral part of Lotusland's Fourth Grade Outreach program for nearly four years, Lori says she "loves the fourth graders. We need to give to the next generation." She does, indeed, do that. Lori's warmth, enthusiasm, and plant expertise are appreciated and enjoyed by scores of Santa Barbara fourth grade students, as well as by their teachers and parents.

Lori says she likes Lotusland "because it gives back more than you put in." In Lori's case, Lotusland would beg to differ. Lori is a bright spirit in the garden, whose "hands on" efforts are well evidenced by her muddy boots and frayed garden gloves, whose laughter and good cheer are contagious, and with whom everyone enjoys working and interacting. Thanks, Lori, for all you do for Lotusland. —Connie Buxton



CONNIE BUXTON

Visitors from Heidelberg, Germany were treated to a tour of the garden with Lori, who is originally from Heidelberg.





# Travel with Lotusland

GARDENS AND OPERA IN SANTA FE

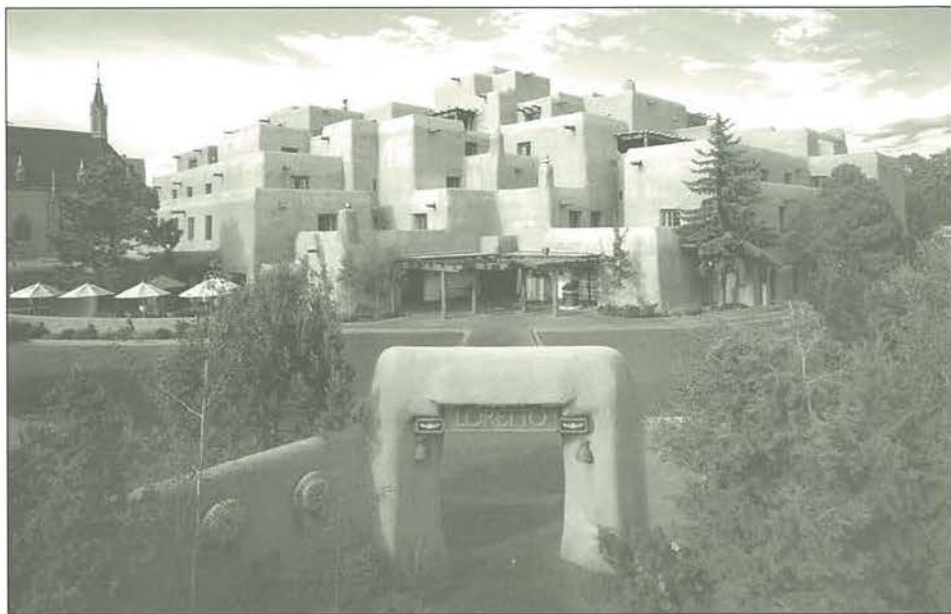
MONDAY, AUGUST 11 THROUGH FRIDAY, AUGUST 15, 2003

OUR TRIP INCLUDES visits to private gardens, orchestra seats for *Così Fan Tutti*, a stay at Inn at Loretto in deluxe rooms including breakfast, a welcome dinner at the Compound Restaurant, lunch at Geronimo's, and dinner before the opera at the Santa Café.

You will have ample time to explore the many attractions of Santa Fe—galleries, museums, shops, and walks in the old town. We'll provide a detailed list. Options include a second opera, *Madame Mao*, a Santa Fe Chamber Festival concert, and dinners at more of Santa Fe's fine restaurants. Join us!

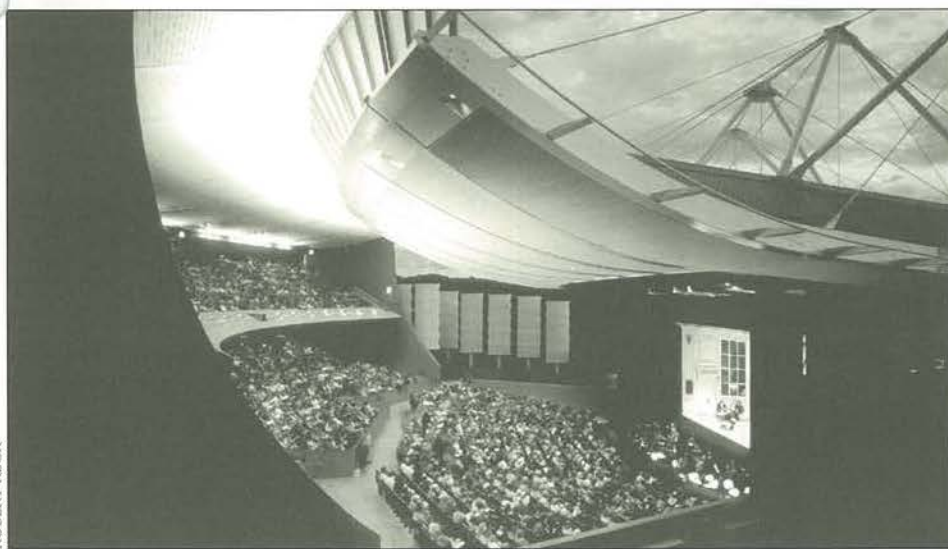
*Carol Valentine*  
Carol Valentine

*Arthur Gaudi*  
Arthur Gaudi



COURTESY PHOTOS

The centrally located Inn at Loretto captures the feel of Santa Fe and is within walking distance of many galleries and shops.



ROBERT RECK

Santa Fe Opera's 480-seat open-air theater is in a magnificent mountain setting.

PAYMENT METHOD: ☐ Check enclosed ☐ VISA ☐ MasterCard

Card number \_\_\_\_\_ Expiration date \_\_\_\_\_

Signature \_\_\_\_\_

Name(s) \_\_\_\_\_

Address \_\_\_\_\_

City/State/Zip \_\_\_\_\_ Phone \_\_\_\_\_

Land-only tour cost of \$1965 per person, double occupancy, includes a tax-deductible \$100 donation to Lotusland; \$550 single supplement.

To reserve space, please complete the form below and return with a deposit of \$300 per person. Please call (805) 969-3767, extension 121 if you have questions.

The \$300 deposit reserves your space and is refundable until January 30, 2003, less a \$75 administrative fee. Air information, a day-by-day itinerary, a response form to request tour options, terms and conditions, and trip insurance information will be mailed upon receipt of reservation.

Please reserve \_\_\_\_\_ spaces. I/we have enclosed \_\_\_\_\_ (\$300.00 per person).

☐ I will share a room with \_\_\_\_\_.

☐ I prefer a single accommodation (supplement \$550).

☐ I prefer a roommate, but if one cannot be found, I will join tour with single accommodation.

Please mail to: Ganna Walska Lotusland  
Attn: Santa Fe Trip, 695 Ashley Road, Santa Barbara, CA 93108





## Kisa Heyer Joins Lotusland's Board of Directors

LOTUSLAND IS PLEASED to welcome Kisa Heyer to our Board of Trustees.

Kisa is an active volunteer in the Santa Barbara community and served on the *Lotusland Celebrates* planning committee prior to joining the board.

Kisa moved to Santa Barbara in 1999 from London, England where she lived for eight years while working for J.P. Morgan. Although born in England, Kisa was raised in the United States and attended Saint

Mary's College in Northern California, where she met her husband, Christian. She currently enjoys raising their two small children, Natasha and Oliver, as well as her active involvement with numerous local organizations, including the Community Arts Music Association (CAMA) Fellows, the Lobero Theatre Associates, the Montessori Center School, and the Santa Barbara Museum of Natural History.

NELL CAMPBELL



Kisa Heyer

CONNIE BUXTON

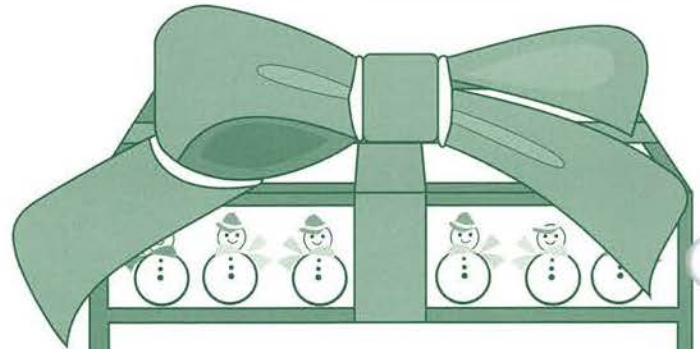


Fourth grade students from Vieja Valley School enjoyed a hands-on adventure in the butterfly garden as part of their Junior Botanist study tour of Lotusland.

CONNIE BUXTON



During their study tour, fourth grade Junior Botanists consult Lotusland maps and use magnifying glasses to learn about plants.



### Give a Holiday Gift of Awe and Wonder

#### **A Friend of Lotusland membership!**

For details on giving a business associate, friend or family member a *Friend of Lotusland* membership, please call (805) 969-3767 and speak with either Marilyn Foreman ext. 115 or Bambi Leonard ext. 120.

Requests by December 16 will ensure that your gift arrives on time.

*Membership fees benefit the garden and are fully tax-deductible.*



# Friends of Lotusland

We Welcome New Members Who Joined in August, September, October 2002

## LEVEL I

Mr. & Mrs. Paul Abrahamian  
 Ms. Karolyn Addington  
 Mr. & Mrs. Jean-Pierre Ainciart  
 Ms. Ernai Alexander  
 Mr. and Mrs. Craig Angell  
 Mr. & Mrs. Tim Angulo  
 Mr. Carlos Antillon, Antillon Design  
 Mr. & Mrs. Carlos E. Araujo  
 Mrs. Jill Ariew  
 Mr. John Artac  
 Mr. & Mrs. Dutch Atchley  
 Mr. & Mrs. Alan Axelband  
 Mr. & Mrs. Andy Balk  
 Ms. Teresa Barrios  
 Ms. Liz Bauer &  
     Mr. Matthew Sperling  
 Mr. Laurence Baxter  
 Mr. Scott Beauchemin  
 Mr. & Mrs. Bryce L. Beck  
 Mr. & Mrs. Ralph Begley  
 Ms. Bernie Bernstein  
 Ms. Anna Bissell  
 Mrs. Susan Bjork  
 Mr. & Mrs. Craig Block  
 Ms. Christy Brenner  
 Mrs. Andrea Breslin-Jaffe  
 Ms. Elayne Brill  
 Mr. & Mrs. James L. Broderick  
 Mr. & Mrs. George Brown  
 Mr. & Mrs. Bill Browne  
 Mrs. Sophia Caldwell  
 Ms. Susan Callado &  
     Mr. Rodolfo Collado  
 Ms. Tina Chappel  
 Mr. & Mrs. Simon Chatwin  
 Ms. Cindy Cheung  
 Ms. Marie Christensen &  
     Ms. Deborah Gentry  
 Ms. Lori Cleary  
 Mr. & Mrs. Lawrence Cohen  
 Ms. Susan Cohen  
 Ms. Helen Couclelis  
 Mr. & Mrs. Peter Cross  
 Ms. Julie Davis  
 Mr. & Mrs. Steve Dayan  
 Mr. & Mrs. Kellam de Forest  
 Miss Adah Duncan  
 Mrs. Constance Dyer  
 Mrs. Lena Dyer  
 Mrs. Robilyn Eggertsen  
 Mr. & Mrs. Keith Eilerman  
 Mrs. Sheila Enelow  
 Ms. Joyce Enright  
 Mrs. Jane Eskuri  
 Mr. Carol J. Esser

Ms. Jan Fadden  
 Daniel E. Fast, M.D.  
 Mr. & Mrs. Dennis Feeley  
 Ms. Elaine J. Felde  
 Mrs. Deborah Ferguson  
 Mr. & Mrs. Gordon Files  
 Mr. Steven Fisher  
 Mr. & Mrs. Timothy O. Fisher  
 Ms. Barbara Jo Fleming  
 Mr. & Mrs. Sam Flowers  
 Mr. & Mrs. Jeff Foster  
 Ms. Merrie Fridkis  
 Didi & Doron Friedman  
 Ms. Nancy Frye  
 Ms. Jerie Garbutt  
 Mr. & Mrs. Robert Ginn  
 Ms. Frankie Glass  
 Ms. Deb Glassman  
 Ms. Marlene Gordon  
 Ms. Emily Gwathmey  
 Mr. & Mrs. E. Sven Hager  
 Ms. Louise Hallikainen  
 Ms. Molly Hannah  
 Mr. Thomas Harrington  
 Ms. Cynthia Havens  
 Mrs. Brenda Hill  
 Ms. Linda Hornick  
 Ms. Judy M. Horton  
 Ms. Lindy Howe  
 Ms. Sandra Hunt  
 Ms. Olivia Peter Huntsman-Trout  
 Mr. & Mrs. Dave Hutter  
 Mr. John Inskip  
 Mrs. Susan Jamgochian  
 Mr. & Mrs. Dan Jordan  
 Ms. Anselma Juan  
 Ms. Amy Jupiter  
 Mr. Michael Keir  
 Dr. & Mrs. Michael Kelly  
 Mr. Patrick Kelly  
 Mrs. Judy Kendrick  
 Mr. & Mrs. Robert Kenner  
 Mr. & Mrs. Roger Kohn  
 Mr. & Mrs. Bruce Kuebler  
 Ms. Carole La Caze  
 Ms. Blake Lannon  
 Ms. Karen Longobart  
 Ms. Huong T. Luu  
 Mr. & Mrs. Murray Mahoney  
 Ms. Laura Mancuso &  
     Mr. Bruce Bimber  
 Mrs. Eleanor Markle  
 Mr. & Mrs. Robert Mason  
 Ms. Maureen Masson  
 Mr. & Mrs. Alex Matson  
 Ms. Carol Matthews

Mrs. Betty McDermott  
 Ms. Julia McHugh &  
     Mr. Scott Orlansky  
 Ms. Whitney McIlvaine  
 Ms. Susan Mellor  
 Mr. & Mrs. Timothy J. Mesquit  
 Mr. & Mrs. Alex Mikolevine  
 Mr. Lee Mircle  
 Mr. W. Mitchell  
 Ms. Cathy Mogull &  
     Mr. James Simons  
 Ms. Lisa Mohun  
 Ms. Alyson Moore  
 Mr. Bill Moore  
 Ms. Joan Moore  
 Ms. Nana Morris  
 Mrs. Carlynn Rose Morrison  
 Mr. & Mrs. Mark Mulder  
 Mrs. Barbara Muselli  
 Ms. Janet Naffberg  
 Mr. & Mrs. John Nelson  
 Ms. Nancy Nolley  
 Ms. Tina Novorr  
 Ms. Margaret O'Donnell  
 General & Mrs. Donald O'Shei  
 Mr. & Mrs. Michael Obarski  
 Mrs. Linda Ohrtman  
 Mr. Jeff Olenik &  
     Ms. Barbara L. Knox-Olenik  
 Dr. & Mrs. Stanley Ostern  
 Mr. & Mrs. George Paradis  
 Mrs. Victoria Parshong  
 Ms. Jill Patterson  
 Ms. Kathren G. Pearce  
 Mr. Robert Pedraglia  
 Mr. & Mrs. John Prehn  
 Ms. Donna Punj  
 Mrs. Carole Raines  
 Ms. Marjorie Ramsdell  
 Mrs. Nancy Reed  
 Ms. Pei Shu Reifel  
 Mr. & Mrs. Christopher O. Reynolds  
 Ms. Cheryl I. Rhoads  
 Ms. Patricia Robinson &  
     Mr. Burke Long  
 Mr. Catetano Rodriguez &  
     Mr. Jerry Welling  
 Mr. & Mrs. Bill Rogers  
 Ms. Sandra Rose  
 Ms. Emily Rosten  
 Ms. Debbie Roth  
 Mr. John F. Saladino  
 Mr. Salvatore Satullo  
 Ms. Adele Schmalenberger  
 Mr. Robert Schriever

*Continued on page 14*



Mrs. Deborah Scott  
 Mr. & Mrs. Jack Shaffer  
 Mr. & Mrs. Howard Shapiro  
 Dr. Wendy Shih  
 Ms. Ellen Skultin  
 Mr. Louis T. Snitzer  
 Mr. Harold C. Snyder &  
 Mr. William F. Kleese  
 Ilon Specht  
 Ms. Rebecca Spurling  
 Ms. Nadine Stern  
 Ms. Beth Sutherland  
 Mrs. Lois Sutherland  
 Mr. & Mrs. Roger Swallow  
 Mr. & Mrs. Dennis Swanson  
 Mr. & Mrs. Bill Tallakson  
 Ms. Jennifer Taylor  
 Mr. & Mrs. Morgan Tench  
 Ms. Elizabeth Thomas  
 Mr. & Mrs. Thomas Thrasher  
 Ms. Alicia Todman &  
 Mr. Robert Rothman  
 Ms. Deborah Tolejko  
 Mr. & Mrs. Jonathan C. Trumbull  
 Ms. Catherine Vandecasteele  
 Mrs. Chad Vick  
 Mr. Jeffrey M. Vilarino  
 Ms. Vincent  
 Ms. Carolyn Weinberger

Members Who Have Increased  
 Their Level of Support  
 August, September, October 2002

### LEVEL II

Ms. Dorothy W. Boothe  
 Mr. & Mrs. Christopher Browne  
 Mr. & Mrs. Aubert DeVillaine  
 Mr. Matthew G. Dillhoefer  
 Ms. Molly W. Dolle  
 Mr. & Mrs. Scott Laudeman  
 Ms. Liza Lou & Mr. Mick Haggerty  
 Ms. Donna Meade  
 Mr. & Mrs. Scott O'Leary  
 Dr. & Mrs. Timothy Rodgers  
 Mr. & Mrs. Jerry Springer  
 Mr. & Mrs. Raymond Summers

### LEVEL III

Ms. Susan Hopmans &  
 Mr. David Bermant  
 Mr. Harlis Maggard  
 Mr. & Mrs. Gerald Parent  
 Ms. Mary Rose & Mr. Frank Artusio  
 Mrs. Anitra P. Sheen  
 Mr. & Mrs. Gene Sinsler  
 Dr. & Mrs. Philip Wyatt

### GARDEN BENEFACTOR

Mr. & Mrs. Thomas E. Hugunin

Ms. Jill Wertheim  
 Mr. & Mrs. Phillip West  
 Ms. Peggy White  
 Ms. Harding Wilkins  
 Ms. Terry-Lynn Winston  
 Mr. Arun Wylie  
 Ms. Zhen Xie  
 Ms. Yvonne Zellmer

### LEVEL II

Mr. & Mrs. Edward Berger  
 Mr. & Mrs. Walter Beust  
 Mr. & Mrs. Jim Brinkman & Steven  
 Dr. & Mrs. Jack Catlett  
 Mr. & Mrs. Norman DuFort  
 Miss Denise Dyer  
 Mr. & Mrs. Edward Eichler  
 Mr. & Mrs. David Eseke  
 Mr. & Mrs. Frank Gilbert  
 Ms. Nanette Giordano  
 Ms. Kymberly Grant,  
 Kymberly Grant Designs  
 Mr. & Mrs. Steven Gumins  
 Mr. & Mrs. Frederic Ingram  
 Mr. & Mrs. Ronald J. Kipp  
 Ms. Deborah Landis  
 Marie Larkin  
 Mr. John Ledwith  
 Bette Mesquit

Ms. Hilary Peattie  
 Mr. Forbes H. Perkins  
 Mr. & Mrs. Marc Recordon  
 Ms. Sybil Roberts  
 Mr. & Mrs. Robert Short  
 Mrs. Anne F. Smith  
 Dr. & Mrs. Marc Stolar  
 Ms. Carol Wilburn &  
 Mr. Charles McClintock  
 Ms. Jacqueline Woods  
 Mr. & Mrs. Geoffrey Wyatt

### LEVEL III

Ms. Stephanie DiMarco  
 Ms. Sharon Frederick  
 Mr. & Mrs. James M. Morouse  
 Ms. Susan Wax & Mr. Ed Kaplan  
 Mr. & Mrs. John Wilczak  
 Dr. Katie Zelko & Dr. Steven Zelko

### LEVEL IV

Mr. & Mrs. Ed Brady  
 Ambassador & Mrs. Henry Catto,  
 Catto Charitable Foundation  
 Mr. & Mrs. Frank Caufield  
 Mr. & Mrs. Don Fuhrer  
 Mr. & Mrs. Robert Rau  
 Ms. Diane Meyer Simon  
 Mr. & Mrs. Thomas Wathen

## Lotusland Gratefully Acknowledges Donations August, September, October 2002

### IN-KIND GIFTS

#### 3 COCKATIELS

Mrs. Kelly Giffin

#### GARDEN SHOP

Mr. Norman Hillemann  
 Mr. Sean Hutchinson

#### MADAME WALSKA MEMORABILIA

Mr. Jerry Jacobs  
 Lost Horizon Bookstore  
 Trustee Margaret Mansfield on behalf  
 of Charlotte Martin's estate  
 Trustee Eva Mason on behalf  
 of Jeanne Woodbury's estate

#### PLANTS

Dr. Daniel Ovadia

#### GARDEN PLANTING BOXES

Mr. Jack Stevenson  
 Sea Crest Nursery

### RESTRICTED GIFTS

#### LOTUS SOCIETY

Mrs. Maurice E. Faulkner

#### REPAIR OF THE TORII GATE

Mr. & Mrs. Thomas E. Hugunin

#### SPONSOR OF "SEX IN YOUR GARDEN" WITH ANGELA OVERY LECTURE & BOOK SIGNING

Mr. Nick Stonnington,  
 The Stonnington Group,  
 Merrill Lynch

#### SPONSOR OF "SHARE THE VISION" SEMINAR

Montecito Bank & Trust,  
 Trust & Investment Division

### GENERAL DONATIONS

Mr. Peter Alper  
 Ms. Judith Blum  
 Mr. & Mrs. William H. Borthwick  
 Mr. & Mrs. Edward Cudahy  
 Mr. James S. Farley  
 Ms. Hannelore Foraker  
 Mr. & Mrs. Greg Palmer,  
 Estero Bay Newcomers  
 Mr. & Mrs. John Rigas  
 Ms. Frances Sozanski  
 Mr. & Mrs. Robin Taliaferro



## Winter Birds at Lotusland

With JEFF CHEMNICK and  
STEVEN TIMBROOK

Saturday, February 15, 2003  
9:00 to 11:00 AM

\$20.00/members  
or member pass + \$5.00

Number of  
people attending \_\_\_\_\_

Number of cars \_\_\_\_\_

Total \$ \_\_\_\_\_

## Ganna Walska Lotusland Registration Form

PAYMENT METHOD: ☐ Check enclosed ☐ VISA ☐ MasterCard

Card number \_\_\_\_\_ Expiration date \_\_\_\_\_

Signature \_\_\_\_\_

Member name \_\_\_\_\_

Address \_\_\_\_\_ Phone \_\_\_\_\_

*One member pass may be used as partial payment for any event.  
Fees are refundable only if cancellation is received one week before class or lecture.  
If minimum enrollment is not reached, classes and lectures may be canceled.*

*No phone reservations, please.*

Mail to: Ganna Walska Lotusland  
Attn: Member Events, 695 Ashley Road, Santa Barbara, CA 93108

## 2003 Member Events

MANY LOTUSLAND EVENTS are open to non-members, so please let your friends and neighbors know about the great activities we offer. We hope you enjoy the year 2003 at Lotusland.

### Saturday, January 18

*Self-guided tours for all Members*  
1:30–4:30 PM  
Members \$15 or use admission pass. Call 969-9990 for reservations 9 AM–NOON, M–F.

### Saturday, February 15

*Winter Birds at Lotusland with Jeff Chemnick and Steven Timbrook*  
9:00–11:00 AM  
See description on page 5 and sign up using the coupon above.

### Wednesday, February 19

Regular tours resume after our winter recess.

### Saturday, March 22

*Self-guided tours for all Members*  
10:00 AM–12:30 PM  
Members \$15 or use admission pass. Call 969-9990 for reservations 9 AM–NOON, M–F.

### Friday, March 28

*Creativity and Innovation: The Wonderful Hats of Ganna Walska with Dale Gluckman, Curator of Costumes and Textiles, Los Angeles County Museum of Art*  
2:00 PM  
See description on page 7.

### Saturday, April 12

*Members' Family Day*  
10:00 AM–4:00 PM  
Music, entertainment, educational activities for the whole family, and a picnic lunch on the lawn. Free to members to thank you for your support of the garden. Use the coupon in the spring newsletter to sign up.

### Saturday, April 26

*Spring Garden Tour for Members*  
9:00 AM–4:00 PM  
Private gardens tour with Lotusland's Curator of the Living Collection, Virginia Hayes. Details will be announced in the spring newsletter.

### Saturday, May 17

*Self-guided tours for all Members*  
10:00 AM–12:30 PM  
Members \$15 or use admission pass. Call 969-9990 for reservations 9 AM–NOON, M–F.

### Saturday, May 31

*Talking Plants with Ketzell Levine Presentation and Reception*  
2:00 PM  
Ketzell Levine, National Public Radio's gardening correspondent,

aka the "Doyenne of Dirt," brings an enlightened and humorous perspective to plants and gardening. Co-sponsored by KCBX, this event is guaranteed to be loads of fun. Details will be in the spring newsletter.

### Saturday, July 19

*Self-guided tours for all Members*  
1:30–4:30 PM  
Members \$15 or use admission pass. Call 969-9990 for reservations 9 AM–NOON, M–F.

### Sunday, July 27

*Lotusland Celebrates: Alice in Lotusland*  
4:00–8:00 PM  
Lotusland's fabulous annual gala and the hottest ticket in town during the summer. Invitations will be mailed to all members in June—a must-save date for every social calendar.

### Saturday, August 2

*Self-guided tours for all Members*  
1:30–4:30 PM  
Members \$15 or use admission pass. Call 969-9990 for reservations 9 AM–NOON, M–F.

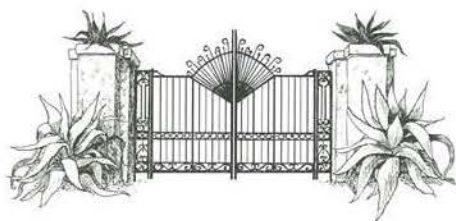




# Ganna Walska Lotusland Foundation

695 Ashley Road  
Santa Barbara, CA 93108  
Address Service Requested

Nonprofit Org.  
U.S. POSTAGE  
**PAID**  
Santa Barbara  
California  
Permit No. 163



## 2003 Member Events *Continued*

### Friday, August 8

#### *Aquatic Lecture series*

2:00 PM (GATE OPENS AT 1:00 PM)  
Lecture/demonstrations on aquatic plants and water gardening. Details will be announced in the summer newsletter.

### Saturday, August 9

*Summer Water Gardens Tour for Members with Lotusland's Curator of the Living Collection, Virginia Hayes*  
9:00 AM–4:00 PM

Tour of local private gardens with a wide variety of styles of water features. Includes motor coach transportation and lunch. Watch for details in the summer newsletter.

### Friday, August 15

#### *Aquatic Lecture series*

2:00 PM (GATE OPENS AT 1:00 PM)  
See Friday, August 8, listing for details.

### Saturday, August 16

#### *Day of the Lotus*

10:00 AM–4:30 PM  
Enjoy a day of fun and education—see the lotuses and water lilies in bloom, question the water gardening staff and other experts, visit the wine-tasting booths, and listen to live music on the lawn. Details will be announced in the summer newsletter.

### Saturday, August 23

#### *Self-guided tours for all Members*

10:00 AM–12:30 PM  
Members \$15 or use admission pass. Call 969-9990 for reservations 9 AM–NOON, M–F.

### Saturday, October 11

#### *Spanish Language Sustainability Workshop*

10:00 AM–4:00 PM  
Lotusland, in collaboration with the Community Environmental Council's Green Gardener Program, will host this workshop that will focus on plant health care methods used in the gardens at Lotusland. The workshop will be offered in Spanish, the native language of many of our green industry workers and proprietors. Details about this workshop will be in the fall newsletter.

### Saturday, November 15

#### *Japanese Garden Aesthetic Pruning Workshop with Lotusland Japanese Garden Specialists*

2:00–4:30 PM  
This hands-on workshop will focus on pines and offers an opportunity to learn methods used by our highly skilled garden specialists. Watch for details in the fall newsletter.

### November 15

Garden is closed to regular tours until February 18.

### Saturday, December 6

#### *Holiday shopping and Self-guided Tours*

1:30–4:30 PM  
Members \$15 or free admission pass; nonmembers \$20. Beginning October 1, call 969-9990 for reservations 9 AM–NOON, M–F.



### Tours

To schedule a tour, please call Visitor Services at (805) 969-9990, 9 AM–NOON, M–F. Docent-led tours for adults and children, age 10 and older, are scheduled Wednesday through Saturday at 10 AM and 1:30 PM. Children under 10 years of age may accompany their families on tours on Thursdays and the second Saturday of each month. *Admission fees:* adults and children 10 years of age and older \$15 or use admission passes; children under ten \$8; children under two free.