



Going Green

By STEVEN TIMBROOK

"WHEN I USE A WORD," Humpty Dumpty tells Alice in *Through the Looking Glass*, "it means just what I choose it to mean—neither more nor less."

If only it were that easy. When I use "green" in my title above, I'm hoping you take it as the current shorthand for managing our lives in an environmentally sensitive way. And, as someone who has a relationship with Lotusland, it's very likely that you do. After all, we've made a practice of pushing this message by living it ourselves in the way we take care of Madame Walska's legacy.

Horticultural enterprise is often referred to as the "green industry," and it's only appropriate that those of us in the "green industry" begin to think of green as more than a color. Public gardens have enormous opportunities and obligations to be leaders in this movement. Let's look at some sobering facts and then some ways that Lotusland is working to spread the "green" message that we all need to heed to start getting our world back in balance.

How many times have you heard that the tropical rainforest is fast disappearing? Some data from Rainforest Action Network gives us a clearer idea of what is being lost. Global population has grown from 2.5 billion people in 1950 to more than 6 billion today. That's the equivalent of adding a new population the size of Mexico's, about 100 million people, every year. Ninety-five percent of that population growth is occurring in the tropics.

Continued on page 2



PHOTOS BY STEVEN TIMBROOK

Peruvian children on the bank of the Rio Napo, a major tributary of the Amazon. Will all of us work to help their children and our own children's children inherit a world whose diversity is cherished and respected?

IN THIS ISSUE

Going Green	I	Sex in Your Garden!	II
Sustainability Workshop Proves a Success	3	Illustrated Lecture, Cocktail Party and Book Signing	
Lotusland's Best Management Practices: Green Garden Strategy Summary	4	New to the Collections	12
The Lotus Society	6	Marguerite Gamo Marks Her 10th Anniversary at Lotusland	12
Lotusland Celebrates Gardens of Enchantment	8	The Cycad: Slide Presentation, Reception and Book Signing with Loran Whitelock	13
Volunteer Profile: Hampton Bell	II	Hello and Goodbye to Three Summer Interns	13

THE LOTUSLAND NEWSLETTER FOR MEMBERS
is published by
Ganna Walska Lotusland Foundation
695 Ashley Road
Santa Barbara, California 93108
(805) 969-3767
www.lotusland.org

Board of Trustees

Robert J. Emmons, *President*
Anne W. Jones, *Vice-President*
Arthur R. Gaudi, *Secretary/Treasurer*

Ella Brittingham
Merryl Brown
Elizabeth W. Dake
W. Mason Farrell
Kisa Heyer
Thomas Hugunin
Harry W. Kolb
Sandra Nicholson
Stanya Owen
Barbara Siemon
Michael Towbes
Carol L. Valentine

Steven Timbrook, Ph.D.
Executive Director

Connie Buxton
Director of Public Programs

Anne Dewey, CFRE
Director of Development

Marguerite Gamo
*Manager of Administration
and Human Resources*

Virginia Hayes
Curator of the Living Collection

Mike Iven
Grounds Superintendent

Deanna Hatch, *Editor*
Lindse Davis, *Design*
Printed by Ventura Printing



Printed on recycled and recyclable paper

Continued from page 1

In the last 50 years, one-third of the forests existing in 1950 have been cut down. Every second, 2.4 acres of rainforest, about the size of two football fields is lost. Every 24 hours, we lose an area the size of New York City. Day in, and day out. And as that habitat is converted to human uses, species of plants and animals, many as yet unknown to science, are disappearing, too.

As agriculture developed in the Amazon basin, small groups of families could clear a section of rainforest, plant bananas, manioc, and other quick maturing crops and live there for a few years until soil fertility began to decline, then move to another area and begin the process anew while the original patch was recolonized by the surrounding native forest vegetation.

When population densities remain low enough to let a clearing revert to mature forest before it needs to be cut again, this type of agriculture is sustainable. But as population density increases, this becomes more and more difficult. And when a large area is cleared for lumber or to convert to commercial agriculture or grazing, that forest is lost forever. According to the Tropical Rainforest Coalition, tropical rainforests once covered more than 14 percent of the Earth's land area, but by 1996 they amounted to less than 6 percent.

Dr. Peter Raven, Executive Director of Missouri Botanical Garden and one of the world's foremost botanists, points out that human beings are but one of about 10 million species on the earth, yet humans use about 40% of the total net terrestrial photosynthetic production. In other words, of all the energy available to nurture every living thing on land, humans are using 40% of it. He also notes that we in the United States, about 4% of the world's population, use about 25% of the world's resources.

Clearly, those of us in the developed countries need to start moving in the direction of living within our means environmentally. Sensitizing people to this global crisis and demonstrating what we can all do to live more "sustainably" has become a major focus of everything Lotusland is doing to accomplish its mission: "to preserve and enhance the spectacular collections of exotic plants on the Montecito estate of the late Madame Ganna Walska, and through interpretation of these collections to foster increased knowledge and appreciation of the importance of plants and the need for their conservation."

Among the 3,000 different kinds of plants in Lotusland's living collection are many "poster" plants, whose stories our docents pass on to the visitors they guide through Madame Walska's garden. One good example



A small plantation of manioc in the Peruvian rainforest can revegetate naturally by seeds from the surrounding mature forest when left fallow for a few years.

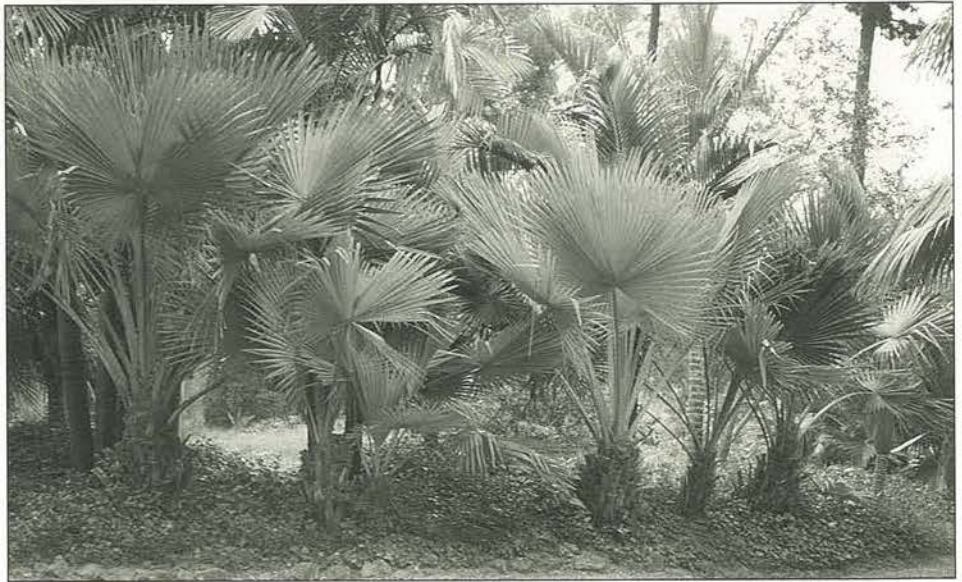


Clearing for lumber, grazing or commercial farming dooms this piece of Amazon rainforest forever, part of the global rainforest loss that now amounts to an area the size of the state of New Mexico every year.



Guadalupe Island fan palm, Brahea edulis, is in danger of extinction by feral goats, which eat virtually every seedling on this largely unpopulated Mexican island.

is the Guadalupe Island fan palm (*Brahea edulis*), endemic to one rocky volcanic Mexican island some 150 miles out in the Pacific from Baja California. Feral goats on this 22-mile-long island have devastated the native vegetation, including the palms, with virtually every new seedling quickly eaten up. When the old, mature trees finally die, the genetic material will only be preserved through plants growing in cultivation. Should the plants become extinct in the wild, which is very likely to happen, collections such as Lotusland's can provide



Endangered species such as Guadalupe Island fan palm, growing here at Lotusland, may have to depend upon cultivated ex-situ populations for their continued existence.

plants for reintroduction if the habitat were to be protected by removing the goats.

As Lotusland develops techniques for sustainable care of its collections and other landscaping, we pass the information on through our "Best Management Practices," which you'll find in this and other Lotusland Newsletters, and through workshops for landscape professionals such as the one on Compost Teas held last October or the more recent "Sustainability Workshop" for members and the lay gardener held in June.

Probably the most "leveraged" method Lotusland has to increase environmental awareness is through

our outreach program for Santa Barbara fourth graders. In addition to the direct effect of providing botanical, horticultural and environmental educational experiences for the more than 1,000 students who participated in the 2001-2002 academic year, we also indirectly reached their parents, especially those accompanying the children on their visit to Lotusland, and we provided special training for the fourth-grade teachers in the program. A lot depends upon being successful in this endeavor.

I think of all these activities at Lotusland as "green." And as Alice observes, "That's a great deal to make one word mean."

Sustainability Workshop Proves a Success

LOTUSLAND'S SUSTAINABILITY WORKSHOP for Members on June 15th was a huge success.

Attendees learned about maintaining a healthy soil ecosystem and how to incorporate "earth friendly" plant health care methods into their gardens.



Jay Hinkle explains to workshop attendees the role of beneficial insects in the fern garden during a staged release of green lacewings.

LOTUSLAND'S BEST MANAGEMENT PRACTICES

Green Garden Strategy Summary

A SUCCESSFUL SUSTAINABLE gardening program is built by incorporating various practices and ideas, relevant to the specific site, that encourage as much compatibility among diverse organisms as possible. The following strategies practiced at Lotusland are not compatible with chemical inputs that can be toxic and degrade biological systems. Many of these strategies are easy to implement and can begin, or add to, a green garden maintenance program. More information about plant health care at Lotusland can be found on our website at www.lotusland.org.

GREEN WASTE RECYCLING

GARDEN GREEN WASTE is managed on site in compost piles and returned to the garden as mature compost to improve and maintain healthy soil conditions. Green waste that is difficult to compost, such as fibrous agave leaves and palm fronds, is transported to Santa Barbara County's green waste recycling program.

We use large quantities of organic material from the county green waste recycling program, as well as wood chips from tree companies, as part of our sustainable garden program. We promote the use of mulches in all of our educational outreach programs to help raise awareness of the value of using this valuable resource.

NUTRIENT CYCLING

NUTRIENT CYCLING OCCURS in many garden areas at Lotusland. The need for supplemental fertilizer applications is reduced or eliminated altogether.

MULCHING MOWER

RECYCLING ATTACHMENTS on lawn mowers return finely chopped grass clippings to the lawn. The clippings soon decompose, releasing valuable nutrients into the soil. Fertilizer requirements are greatly reduced.

ORGANIC FERTILIZERS

IN GARDEN AREAS where supplemental nutrients are required, we use organic fertilizers, which benefit the soil food web organisms and eliminate the possibility of pollution of underground water by nitrate fertilizers.

INSECT ECOLOGY

INSECTARY AREAS established throughout the garden increase bio-diversity and attract beneficial insects to promote a balanced insect ecology, resulting in reduced insect damage to plant collections. Insectary plantings are part of a strategy that replaces the dependency on insecticides for pest insect management.

BIOLOGICAL CONTROL

SUPPLEMENTAL RELEASES of beneficial insects are occasionally made as needed. Beneficials can be harvested from insectaries with a vacuum

insect net and then released in other areas of the garden.

BENEFICIAL BACTERIA

ON THOSE RARE OCCASIONS when caterpillars exceed our damage threshold, limited applications of *Bacillus thuringiensis* are made. Even though environmentally safe, use of this material is limited because of its effect on butterflies.

DEVELOPMENT OF DISEASE-SUPPRESSANT SOIL

SOIL MANAGEMENT has a very high priority at Lotusland. An on-going effort is underway to increase the disease suppression capabilities of the soil throughout the garden. This is accomplished by increasing the soil organic matter content through the use of compost during garden renovation and of organic mulch throughout the garden. Antagonistic or beneficial fungi are also widely used to combat pathogens and strengthen host plants. These practices help provide natural management of soil-borne diseases that have been such a problem in the past. These soil-borne diseases were formerly managed, though not always successfully, by routine drenches of chemical fungicides.

EARTHWORM MANAGEMENT

THE VALUE THAT EARTHWORMS provide to our gardens is fully recognized and appreciated. Certain manage-

PHOTOS BY MIKE IVEN



Lotusland's green waste is composted, then returned to the garden when mature to improve and maintain healthy soil conditions.



The mulching mower, operated by Tim Cordero, significantly reduces the need for non-organic fertilizers.



Only organic fertilizers are used at Lotusland, thus eliminating possible nitrate contamination of the underground water table.



This insectary not only increases bio-diversity, but also attracts beneficial insects that replace insecticide use for pest insect management.

ment tactics are implemented to provide conditions conducive to their health. No chemical pesticides and fertilizers are applied. Mulch is maintained to provide food and shelter for the earthworms. Compost tea, calcium, and other soil improvement materials are used to provide an environment conducive to large earthworm populations. In return, the earthworms aid the soil micro-organism and plant communities by cycling decomposed organic matter and aerating the soil for easy movement of water, oxygen, and other nutrients to plant roots.

COMPOST TEA TO MANAGE FOLIAR PATHOGENS

FOLIAR DISEASE MANAGEMENT has evolved from using a completely conventional approach with weekly applications of fungicides (the traditional method of rose care) to one



John Lafleur makes compost tea, which helps prevent fungal disease from infecting plants.

with routine applications of organic materials, and, finally, to one with special formulations of compost tea. The compost tea provides a film of living beneficial organisms that prevent fungal disease spores from infecting the plants. The tea does not kill pests or disease pathogens, but is effective as a preventive.

ROOT DISEASE MANAGEMENT

SUPPLEMENTAL DRAINAGE has been installed in selected gardens to reduce root rot incidences. This and the previously listed soil management practices have greatly improved the root health of our plant collections and have eliminated the routine soil drenches of chemical fungicides that were a former strategy in managing root rot.

CRABGRASS MANAGEMENT

ANNUAL CONTROL OF CRABGRASS and other weeds is provided by the use of corn gluten, a product made from corn meal that acts as a pre-emergent herbicide. It also supplies 10% nitrogen to help provide nutrients for our turf areas. The clover that is a welcome part of our main lawn provides bio-diversity, attracting beneficial organisms to the garden as well as fixing nitrogen from the air to the soil where the turf grass is able to use it as needed. Control of annual weeds was formerly managed by using a toxic herbicide.

BENEFICIAL NEMATODES

SOIL GRUBS EAT ROOTS of ornamental grasses such as the blue fescue in Lotusland's blue garden. Beneficial nematodes are microscopic worms that feed on soil grubs. The chemical insecticides used in the past for soil grub control have been eliminated.

COVER CROPS

COVER CROPS ARE PLANTED in areas planned for future gardens to improve the soil as well as to help attract beneficial insects to the garden. The soil in the garden area slated for the Dunlap cactus collection has been greatly improved through several years of cover cropping.



Corn gluten, made from corn meal, acts as a pre-emergent herbicide to help control crabgrass and weeds on Lotusland's main lawn.

TRAPPING GOPHERS

GOPHERS, A CONTINUING PROBLEM, are no longer controlled by strychnine poisons. A combination of strategies that include trapping, along with attempts to increase the owl and raptor population of the garden, have been employed. Innovative trapping techniques include the use of weedy malva leaves and anise oil as lures.

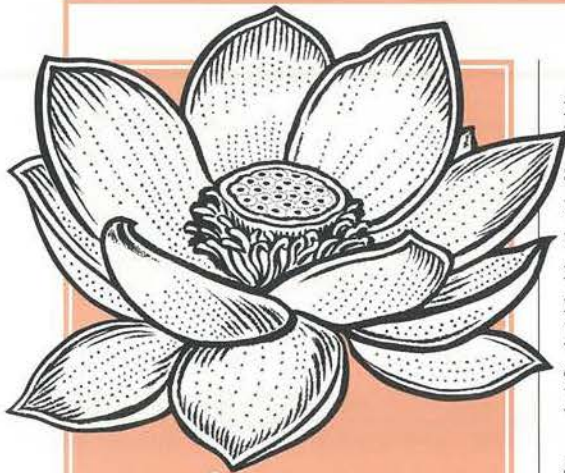
MECHANICAL AND CULTURAL WEED MANAGEMENT

WEED MANAGEMENT, which was at one time almost exclusively done through the use of herbicides, is now predominantly performed by mechanical means and extensive mulching throughout the garden. An organic herbicide, Scythe, is occasionally used in the garden to control weeds coming through the mulch and in areas with gravel mulch such as in the cactus garden. This material, approved by the California Certified Organic Farmers, is a soap mixture formulated to act as a herbicide. We rarely use it, as our primary defenses are through mechanical means and mulching.

NONTOKIC SNAIL MANAGEMENT

SNAILS WERE ONCE CONTROLLED by poisons, but are now controlled by a nontoxic material, Sluggo, that breaks down into an iron product that plants can use as a nutrient supplement.

—Mike Iven



The LOTUS SOCIETY

JEANNE THAYER: GETTING TO KNOW A FASCINATING LADY

IN FEBRUARY OF 1994, shortly after moving to Santa Barbara from New York City and Long Island, Jeanne Thayer was introduced to Lotusland's long-time President, Carol Valentine. Carol brought Jeanne to Lotusland and, as they were driving through the gates, Jeanne saw "Ganna Walska Lotusland" on the entrance plaque. "I know about Ganna Walska," she exclaimed. "My mother was a dresser for Madame Walska when she performed in Butte, Montana, before World War I. I used to listen to my mother's old 78 RPM records of Madame Walska singing."



Jeanne Thayer

COURTESY PHOTO

One of the most pleasant and interesting facets of being Lotusland's Executive Director is getting to know some of Santa Barbara's nicest people through my contact with staff, trustees, volunteers, and Lotusland's members and supporters. Last month I spent a fascinating two hours with Jeanne Thayer and came away with even greater respect for a life well lived.

Born in Ohio and the daughter of an Army officer, Jeanne had the opportunity to live in China, Panama, the Philippines, and Paris, as well as in the States during her childhood.

While stationed in Honolulu, Jeanne's father indulged his orchid growing hobby, an interest inherited from his father, who had an orchid house on his Ohio farm. "My father told me I could have my own garden when I was little," Jeanne recalled, "And I could grow anything I wanted. I chose gladiolas and peanuts, which he thought was very strange, but nevertheless allowed."

Jeanne's familiarity with strategic Asian locales and her poise, polished by early years as an actress on stage and radio, led to her hiring during World War II as the Chief Route Information Analyst, the first civilian employee of the newly created Air Transport Command. At the end of the War, Jeanne met her husband, Walter Thayer. They raised their family—daughters Anne, Susan, and Gail; and son Tom—on Long Island, where they enjoyed sailing with their father during the summer months. Not a keen sailor herself, Jeanne told me, "The garden, that was my boat, the garden," where she grew large patches of daylilies and irises along with roses, lilacs, and whatever else took her fancy.

Walter was chairman of Whitney Communications Company and the *International Herald Tribune*. He founded the Vocational Foundation in 1934, which works with disadvantaged youth in New York City. Jeanne volunteered for many years for the Vocational Foundation, and her daughter Anne is the current

President. Twelve hundred New York City youth receive vocational training every year in cooperation with corporations that link with its programs.

When Jeanne moved to Santa Barbara after many years in New York City, where she was a trustee of the State University of New York, Sleepy Hollow Restorations, and the Museum of Modern Art, she wanted to enjoy her new life with a reduced level of volunteer activity. Nevertheless, we persuaded her to co-chair the wonderfully successful Topiary Garden Campaign two years ago, which she was happy to do as it benefited Lotusland and honored her friend Carol Valentine.

I asked Jeanne what it was about Lotusland that particularly led to her decision to join *The Lotus Society*. "I think the children's education program is wonderful, and I'm very excited about Lotusland's sustainable horticultural practices. Both seek to improve the way we relate to the natural world, and the future will be better for that. I feel any contribution to *The Lotus Society* helps ensure that these programs continue, and I've always found peace in gardens."

—Steven Timbrooke

NEW CHARTER MEMBERS

THANK YOU to the following new charter members for their generous support.

Mary Lou Ardohain

Virginia Castagnola-Hunter

in Memory of

Dr. Christoph Florian Büchtemann

Norman & Helen Hillemann

Mrs. Jacqueline J. Stevens

in Memory of Ronald C. Stevens

Jeanne C. Thayer

Michael Towbes

Lifetime membership in *The Lotus Society* is reserved for individuals who help preserve and enhance Lotusland as a unique



botanical treasure by contributing \$10,000 or more to the Endowment Fund either as an outright or estate-planned gift. To date we have received \$112,000 in cash gifts, \$48,000 in cash gifts pledged, and \$940,000 in bequests.

If you already have made an estate planning provision for Lotusland, please let us know so that we may thank you and include you in *The Lotus Society*. If you would like to know more about *The Lotus Society* and how you can help Lotusland, please call Anne Dewey, Director of Development, at 969-3767, extension 105.

LOW INTEREST RATES = HIGHER INTEREST IN CHARITABLE GIFT ANNUITIES

THE CURRENT ECONOMY has not been good to individuals who seek additional income from their investments. Investors seeking higher returns don't have many options today. Those with CDs maturing won't find higher rates if they seek to renew them for another term. CDs, bonds and savings accounts are not providing much in the way of income.

There is one alternative to consider that might provide higher returns: a Charitable Gift Annuity. When a donor establishes a Charitable Gift Annuity to benefit Lotusland, he or she receives a current income tax deduction and a guaranteed, fixed income for the life of one or two people. After their lifetime, Lotusland receives the remaining funds.

Here is an example of more favorable rates:

Mary (not her real name), age 85, has a \$50,000 CD earning 3% that provides \$1,500 in annual income. With a Lotusland Charitable Gift Annuity, she could earn 10.4% or \$5,200—more than three times as much! She could almost double her income with a gift annuity

of only half the size of her CD, or \$25,000—leaving the other \$25,000 to spend as she chooses.

Mary's gift annuity provides her with a current \$2,464 tax deduction, and a generous portion of each annuity check is completely tax-free. Her gift annuity qualifies Mary for membership in *The Lotus Society*, and she has the satisfaction of knowing that her gift eventually will help preserve Lotusland's unique garden and sustain our horticultural and educational programs for the public's enjoyment.

Please remember this example is only an illustration. Each situation is unique and must be examined separately.

Charitable Gift Annuity rates are based on age and run as high as 12%. While gift annuity rates may seem high, it is important to remember that rates are comprised of both earnings and a portion of the amount contributed for the annuity. Rates are structured in such a way that at least half of the funds transferred for the gift annuity will be available for charitable use. The gift annuity program is overseen by a number of state agencies, and the issuer has received all permits necessary to issue gift annuities.

For more information and to receive a free, personal illustration of how this could work for you, please call Anne Dewey, Director of Development, at 969-3767, extension 105.

Share the Vision

SPONSORED BY MONTECITO BANK & TRUST,
TRUST AND INVESTMENT DIVISION

CHARTER MEMBERS OF *The Lotus Society* and *Friends of Lotusland* at Level III and above were invited to gather at the garden on the afternoon of August 20 to learn more about upcoming projects at Lotusland and to share their thoughts about how they would like to see Lotusland improve over the coming years. Sixty guests enjoyed a walk through the garden that featured the Japanese garden, butterfly garden, newly acquired Dunlap Cacti Collection, and the site for a proposed new cactus garden.

After a wine and hors d'oeuvres reception, everyone assembled in the theatre garden where Trustees Arthur Gaudi and Michael Towbes, Executive Director Steven Timbrook, and Montecito Bank & Trust Senior Vice-president Mark Fingerlin spoke briefly about the Master Planning for Lotusland currently in progress.

Next, members of the audience shared their thoughts about Lotusland's future. It was a productive interchange, and we are grateful for the support and encouragement we received from our members.

If you have thoughts about how Lotusland might improve its grounds, collections, and service to Members and the public, we hope you will share them with us by writing to Dr. Timbrook, or by sending an email to timbrook@lotusland.org.



DEANNA HATCH

Lotus Society members Jacqueline Stevens (SECOND FROM LEFT) and Ruth Mahoney (RIGHT) enjoy wine and hors d'oeuvres, after their tour, with Dorothy Warnock (LEFT) and Shirley Toeppner (SECOND FROM RIGHT).

LOTUSLAND THANKS U.S. TRUST COMPANY FOR ITS SPONSORSHIP OF Lotusland Celebrates Gardens of Enchantment

ONCE AGAIN THE GENEROUS sponsorship of U. S. Trust Company helped make our annual fundraiser, *Lotusland Celebrates*, a smashing success. We were delighted to have **Barbara and John DeGroot**, **Harry O'Mealia**, and **Peggy and Joseph Gallagher** represent U.S. Trust at the July 28 event.

Our event committee members, **Kelly Boss**, **Ella Brittingham**, **Merryl Brown**, **Anne Dewey**, **Julie Farrell**, **Bob Emmons**, **Robin Fell**, **Kisa Heyer**, **Chana Jackson**, **Karen Kolb**, **Bambi Leonard**, **Lori Mikles**, **Amanda Stonnington**, **Carolene Tacconelli**, and **Lisa Wolf**—along with the clever talents of **Tamara Feller** and **I.D.O. Events**—transformed the already magical Lotusland into a true Garden of Enchantment.

As guests arrived, they were met by fairies, who greeted them with magic wands. After a short walk along the wooded path, an assortment of charming accessories was presented in beautiful baskets: handmade floral garlands (made the day before by 35 creative volunteers), purple butterfly wands, necklaces made of star-shaped vials containing fairy dust, and wooden flutes. Waiters offered champagne on the way to the Japanese garden, which was made even more enchanting by the lovely sounds of a harpist playing while fairies flitted among the plants. Guests

continued to the water garden where they were serenaded by a flutist. The water garden in full bloom is the site of the oil painting "Madame's Garden at Twilight," generously donated by the renowned plein air painter **Thomas Van Stein**. Our thanks also go to **AND Framing Service** and **Merryl and Monte Brown** for their assistance with the beautiful framing.

The next stop was a wooded arch positioned over an antique gate leading to the main lawn and more delightful entertainments. **Queen Mab** played Celtic music on the Geranium Terrace, and the **Santa Barbara Chamber Ballet** performed excerpts from "A Midsummer Night's Dream" for charmed guests while they enjoyed drinks and hors d'oeuvres before dinner.

Guests were seated on the main lawn at beautifully decorated tables complete with enchanting centerpieces made of moss, curly willow, and lilies of the valley fashioned by the creative team from **Honfleur**. Lotusland's Executive Director, **Steven Timbrook**, welcomed guests and commented on how magnificent the gardens looked.

The **Four Seasons Biltmore** presented a fabulous dinner beginning with an appetizer of lobster, crusted sweet crab, and apple followed by a Maui onion and peppercorn crusted



Trustees Merryl Brown and Michael Towbes greeted guests as they arrived for a magical evening at Lotusland Celebrates Gardens of Enchantment. Merryl is also a member of the hard-working events committee.

prime beef tenderloin. A 1999 Syrah and a 2000 Chardonnay from **Foxen Winery** complemented the meal.

Dinner was followed by a lively auction, conducted by auctioneers **Bob Emmons**, President of the Board of Trustees, and Trustee **Mason Farrell**, which raised more than \$100,000 for Lotusland's programs. Bidding was spirited for the four items:

- *An Enchanted Birthday Party for Forty.* Thank you to **Elena Wegner Catering**, "Sugar" and **Sarah Farmer** for their donation of a custom designed theme cake, **Balloon-O-Grams**, and **Enchanted Portraits** by **Bob DeBris**.



Event committee member Lisa Wolf with her husband, David Wolf arrive for an enchanting evening at Lotusland Celebrates.



Painter Thomas Van Stein with Luci Janssen, the successful bidder for the painting he generously donated, "Madame's Garden at Twilight."



Dancers from the Santa Barbara Chamber Ballet perform excerpts from "A Midsummer Night's Dream" for delighted guests.



Lotusland's President, Bob Emmons, with Trustees Kisa Heyer and Mason Farrell. Kisa and Bob are both event committee members.

- *"Madame's Garden at Twilight," an oil painting of the water garden by Thomas Van Stein.* The successful bidder for this beautiful painting, donated by the artist, was **Luci Janssen**, who was also celebrating her birthday with a group of women friends.
- *Dinner for Ten in the Enchanted Lotusland Garden of your Choice.* The lucky high bidders and their guests will enjoy a private dinner party, with catering donated by the **Four Seasons Biltmore**.
- *Victorian Holiday Dinner for Twenty.* Fabulous holiday décor complete with chestnuts roasting on a blazing fire will make a memorable event for the winners of this dinner. Thank you to **Village Catering** and the **Lamplighter Quartet** for donating their services.

After coffee and delicious chocolate praline roulades, guests had more

surprises in store for them as they wended their way to the parking lot at sunset. "Puck" tossed candy to departing guests from his perch high in a tree. And just around the next bend, a unicorn appeared accompanied by a beautiful fairy. The enchantment ended...until next year.

Lotusland wishes to thank the following sponsors, whose support ensured the success of Lotusland's major fundraising event.

SPONSOR

U.S. Trust Company

BENEFACTORS

The Ann Jackson Family Foundation
Robert & Christine Emmons
Arthur R. Gaudi
Bill & Sandi Nicholson
The Stonnington Group,
Merrill Lynch & Co.

Michael Towbes
Bob & Marlene Veloz
William E. Weiss Foundation

CONTRIBUTORS

Tenet Healthcare Foundation
Thomas Van Stein

PATRON TABLE HOSTS

Thomas & Nancy Bollay
Ella & Scott Brittingham
Zora & Les Charles
Mr. & Mrs. Thomas Crawford, Jr.
Gretchen Gregersen
Carla & Stephen Hahn
Elenore & Tom Hugunin
Luci & Rich Janssen
Harry & Karen Kolb
Mr. & Mrs. Frederick Maison
Lori & Lee Mikles
Montecito Bank & Trust
Greg & Barbara Siemon
Jeanne C. Thayer
Carol L. Valentine



Suzanne Faulkner, Trustee Arthur Gaudi, Isabelle Greene, and Trustee Carol Valentine arrive at Lotusland Celebrates.



Wendy Reynolds, Deanna Dehlsen, and Patricia Trenton enjoy—and enhance—the beautiful gardens.



Trustee Harry Kolb and his wife, event committee member Karen Kolb (STANDING, CENTER), and friends pose for a picture at their table.



Flittering fairies cast their enchanting spells on unsuspecting guests Steve and Elisabeth Zahm.

PATRONS

Dr. & Mrs. A. E. Amorteguy
 Jeffrey & Margo Barbakow
 Hugh & Kelly Boss
 Mrs. Neil Campbell
 Pierre Claeysens
 Mr. & Mrs. Jamie W. Constance
 Geoffrey & Kimberly Crane
 Gary & Kellie Dojo
 Mercedes H. Eichholz
 Mrs. Maurice E. Faulkner
 Mr. & Mrs. Robert M. Fell
 Priscilla K. Giesen
 Mr. & Mrs. John Gillespie
 Christian & Kisa Heyer
 Mr. & Mrs. James H. Jackson
 Robert M. Light
 Eli & Leatrice Luria
 Elise Mudd Marvin
 Janet R. Milligan
 Gene & Arlene Montesano
 Mr. & Mrs. William G. Myers
 Mrs. Margo Osherenko

Bernie & Rosemary Parent
 Martin & Joanne Perellis
 Frank & Pam Pesenti
 Helen S. Service
 Dorothy & Stan Shaner
 Ed Snider
 Sotheby's International Realty
 Mr. & Mrs. Edward E. Stepanek
 Victor & Carolene Tacconelli
 Christy Walters
 Thomas & Kathleen Wathen
 Mr. & Mrs. David Wolf
 Kent & Nancy Wood
 Linda J. Wright & Frederick W. Gluck
 Mrs. C.W. Youker

DONORS

AND Framing Service
 Mr. & Mrs. Chris Anderson
 Balloon-O-Grams by Carolyn Gillio
 Mr. & Mrs. Russell S. Bock
 Mr. & Mrs. Franklin Otis Booth III
 Mrs. Louise Brant

Merryl & Monte Brown
 Dr. & Mrs. David Buchanan
 Julia Child
 Oswald J. Da Ros
 Portraits by Bob DeBris
 Elena Wegner Catering
 Four Seasons Biltmore
 Foxen Winery
 Haagen Printing
 Preston & Maurine Hotchkis
 Julie Summers Catering
 Barbara Keller
 Lamplighter Quartet
 Mrs. Charles T. Munger
 Jack & Sheri Overall
 Mrs. George Russell
 "Sugar" & Sarah Farmer
 Louise E. Thielst
 Carol L. Valentine
 Mr. & Mrs. Sander Vanocur
 Village Catering
 Dr. & Mrs. James Yoch, Jr.
 Mr. & Mrs. Norman Zemel



LEFT TO RIGHT: Mary and John Romo enjoy the festivities with Lady Ridley-Tree.



Fife Symington and Julia Child are delighted with the scrumptious dinner catered by the Four Seasons Biltmore.



Volunteer Profile: Hampton Bell

A MAN WITH A HORTICULTURAL PAST

COURTESY PHOTO



Hampton Bell

TALENTED DOCENTS are a given at Lotusland, but Hampton Bell's rich horticultural background makes him an exceptional asset to the docent corps. A tour with Hampton is truly an unforgettable experience.

Hampton has been interested in gardening since he was a young boy growing up in New Jersey.

After serving as a weather observer in the Aleutian Islands and Alaska during World War II, he decided to pursue his horticultural interest in earnest by enrolling at Rutgers University, one of the "land grant" colleges established by Congress during the Civil War to promote agriculture in the United States and to teach farmers proper farming methods.

After earning his B.S. in Agriculture from Rutgers, he married and

ran a dairy farm in New Jersey for nine years. He and his wife were intrigued by the Biltmore Estate's famous Jersey dairy herd and, wanting to relocate, they moved to Asheville, North Carolina. Soon after moving Hampton changed course, and he and a partner opened a nursery (just opposite the Biltmore Estate) called the Wayside Nursery. They kept greenhouses, ran a retail business, and offered landscaping services for many years.

Hampton and his wife visited Santa Barbara several times during vacations, and in 1975 they decided to retire here. He knew he wanted to be in an area where he could garden year-round and really enjoy the outdoors. Hampton refers to Santa Barbara as the "Mecca" of horticulture and says that the horticulture talent available here is amazing. "You can find expert knowledge in all aspects of horticulture and botany without looking far, and it spreads through all age groups and both sexes."

While attending a Santa Barbara Beautiful tour at Lotusland in 1977, Hampton had an opportunity to catch a glimpse of Madame Walska, who was hosting the event. Many years later, before the garden was officially open to the public, Dr. Steven Timbrook gave him a garden tour. It was inevitable that Hampton was to become a part of Lotusland,



DEBBIE HILD

Visitors to the garden are treated to an unforgettable botanical experience with Lotusland docent Hampton Bell.

and in 1993 he joined our first "formal" docent training class.

Lotusland docent training is conducted every two years, and Hampton is always asked to speak at a biennial reception for potential docents. He sets just the right tone, and we are certain he has been the inspiration for scores of docents to "join up" for the rigorous five-month program. In Hampton's own words: "Being a docent at Lotusland has been extremely rewarding to me...(it has) led to the making of many new friends and it has given me great pleasure to show people from all over the United States and the world this wonderful collection of plant material. Lotusland has been a great opportunity for me to increase my knowledge of horticulture. I enjoy passing on this knowledge as a docent and seeing the joy and pleasure people receive as they witness the wonders of Madame's creation."

With his impressive horticultural knowledge, gentle manner, and positive attitude, it is little wonder that visitors on his garden tours leave Lotusland knowing they are richer for the knowledge they have gained during a truly memorable experience. Thank you, Hampton, for being such an outstanding docent and an inspiration to us all.

—Connie Buxton

Sex in Your Garden!

FEATURING THE POPULAR, ENTERTAINING AND INFORMATIVE AUTHOR AND LECTURER ANGELA OVERY

SATURDAY, OCTOBER 12, 2002

ILLUSTRATED LECTURE AT 3:00 PM

COCKTAIL PARTY AND BOOK SIGNING 4:00-6:00 PM

Invitations to this special thank-you for our upper level members (Level III and above) will be mailed in September.

This event has been underwritten by Nick Stonnington for The Stonnington Group, Merrill Lynch.

New to the Collections

ONE OF THE FIRST plants visitors may notice when entering the garden is a stunning young plant of *Xanthorrhoea quadrangulata*, the grass tree. About 17 species of this genus are native to Australia and are reminiscent of cartoon plants such as you might see in a Dr. Seuss story. Very narrow leaves arising from a central growing point characterize all of them, although the main stem of several species may branch after a number



VIRGINIA HAYES

This *Xanthorrhoea quadrangulata* displays the very narrow leaves characteristic of all the grass trees.

of years. Growth is very slow. Our specimen at the corner of the walkway to the Visitor Center is only about 16 years old and has not yet formed a trunk. It did flower a couple of years ago, and four or five new branches are being formed. It will be many years before this plant shows its true character.

We are fortunate, though, to have recently received a donation of a new specimen grass tree, *X. johnsonii*, that does display the stout trunk that these plants attain with advanced age. The trunk is also blackened by fire, a common occurrence in its native range. The stark contrast of this charred stem topped by a mop of linear green leaves gives the plant a very sculptural quality. We will plant it near a grouping of other *Xanthorrhoeas* in the area just south of the *X. quadrangulata*. Its size and age make it an excellent addition to the Australian plantings at the Visitor Center.

Scattered throughout the other planting beds at the entrance to the garden, the Visitor Center, and around the parking areas are more than a dozen *X. preisii*. This species of grass tree can't really be called a tree

because at no time in its life does it form a trunk. The grassy olive green leaves maintain a dense rosette at ground level even after it matures and begins to bloom. All the grass trees in Australia occur in arid habitats, often standing as the tallest plants in the landscape at only 6 to 8 feet in height.

One more example of *Xanthorrhoea* is planted at the edge of the main lawn just north of the *Beaucarnea recurva* (ponytail palms) plantings. You can view it either from the lawn or from the path in the bromeliad garden that is in front of the rooster-topped boulder grotto. This specimen may be dozens of years old, and no record exists of when it was included in the garden. (A similarly sized one still exists at Franceschi Park that was planted in 1959.) It is joined by some look-alike species in the genus *Dasyllirion*, a distantly related genus of plants that live only in the southwestern United States and northern Mexico. This is another good example of plants from widely separated places in the world developing similar shapes and attributes in response to environmental forces. —Virginia Hayes

Marguerite Gamo Marks Her 10th Anniversary at Lotusland

MARGUERITE'S WORK AT LOTUSLAND has evolved from a part-time position in 1992 to her current position as Manager of Administration and Human Resources. Since she began managing human resources in 1993 the staff has grown from 20 to 40 employees, and during this time she has been instrumental in adding several new employee benefit plans including pre-taxing of insurance premiums and employer matching to the employee retirement plan. Always willing to take on new duties, Marguerite was Supervisor of Visitor Services from September 1999 through

2001. And in 2002 she added the Garden Shop to her list of responsibilities and challenges. Marguerite is a member of the National Museum Store Association (MSA) and the Western Chapter of the MSA, which Lotusland hosted in 1999. She has attended annual MSA conferences in Ft. Worth, Texas, Minneapolis, Minnesota, and Charlotte, North Carolina.

Marguerite's versatility, skills, and dedication have served Lotusland well during the last ten years. We congratulate her for her many accomplishments, and look forward to the next ten years.



Marguerite Gamo

The Cycads

SLIDE PRESENTATION, RECEPTION AND BOOK SIGNING WITH LORAN WHITELOCK
SATURDAY, NOVEMBER 16 • 2:00 PM (GATES OPEN AT 1:00 PM)

CYCADS REPRESENT AN ANCIENT lineage whose fossil history extends over 200 million years. In fact, the Jurassic period is known as the Age of Cycads as well as the Age of Dinosaurs. Cycads have been called the reptiles of the plant world because in spite of their long history they continue to exist, though precariously, in remarkable diversity. Loran Whitelock has spent decades studying cycads in their natural habitats around the world, and his eagerly anticipated book, *The Cycads*, is the book cycad enthusiasts have been waiting for. Mr. Whitelock will regale us with stories about his exciting cycad expeditions to exotic locales throughout the world and with his interactions with Madame Walska in designing her cycad garden.

Lotusland's cycad garden has been referred to as the jewel in its crown. That reference takes on a more literal connotation considering that Madame Walska partially financed the creation of the garden in 1978–79 by the sale of her jewels. Regally occupying a prominent place in the cycad garden are three

Encephalartos woodii, and rightly so. They are extinct in the wild, and only a handful of male plants exist today in a very few botanical gardens. Madame Walska purchased these exceptional plants from Loran Whitelock.

Please join us for this very special event. Gates will open at 1:00 PM to give guests time to visit the cycad garden before the 2:00 PM slide presentation. Lotusland staff will be on hand to interpret and answer questions about this very impressive and important collection. A wine and hors d'oeuvres reception will follow the presentation, and Mr. Whitelock will be available to autograph his book. You may wish to bring your own book to be autographed, or you can purchase a book at the event for the special rate of \$55, including tax, which represents a 15% discount from the usual price in our garden shop.

The price for this event is \$35 for Members and \$40 for nonmembers. Space is limited, and advance reservations are required. To register, please use the coupon on page 15. As book supplies are limited, there



COURTESY PHOTO

Loran Whitelock has spent decades studying cycads in their natural habitats around the world. Here, he is shown in Honduras with a new species of cliff-dwelling *Zamia*.

is space on the coupon to indicate that you would like to purchase a copy of *The Cycads* at the event. If you have questions, please call (805) 969-3767, extension 107.

—Connie Buxton



TEEN

LEFT TO RIGHT: **Degen Penner** has a B.A. in Art History from Washington University and is currently enrolled in Santa Barbara City College's Environmental Horticulture program; **Pamela Frickman** is a sophomore at U.C. Davis, majoring in Environmental Horticulture; and **Brad Hogan** is a Horticulture major at Pennsylvania State University.

Hello and Goodbye to Three Summer Interns

LOTUSLAND WAS FORTUNATE to have three Summer Interns this year to assist regular staff members with grounds maintenance, landscape installation, and other tasks related to operation of the garden. We are a very attractive venue for the ten-week long internships and thus have many applicants, mostly from out of town.

This year, because two of the three top contenders either live here or have family members who do, only one needed to take advantage of living on site in the Pavilion. Thus we were able to accept all three—and triple the work that was accomplished as well as the valuable learning experience that we offer.

Friends of Lotusland

We Welcome New Members Who Joined in May, June, and July 2002

LEVEL I

Mr. & Mrs. Donald Anderle
Mr. Don Anderson
Ms. Lorraine Andrade
Mrs. Pauline Arnold
Ms. Jane G. Artinian
Mr. & Mrs. Paul Backus
Simi & Andy Barrad
Ms. Michelle Barrett
Ms. Margaret Barthmaier
Mr. & Mrs. Robert Bartlein
Mr. & Mrs. Lee Bass
Mr. & Mrs. David Baum
Ms. Cathy D. Bekian
Mr. & Mrs. Bellinghausen
Ms. Priscilla Bender-Shore
Mr. Harris D. Berger &
Mr. Michael D. Quick
Mr. & Mrs. Nick Berman
Mr. Lawrence J. Bines
Mr. & Mrs. Pat Bixler
Ms. Diane Blackford
Ms. Molly Blaschke
Ms. Judy Bloom
Mr. & Mrs. Robert Bonning
Dr. Ruth Bor-Shalom
Ms. Liz Bordow
Ms. Louise Boucher
Mr. & Mrs. Marvin James Branch
Mr. Robert Breen
Mrs. Suzanne Brenner
Mr. & Mrs. Morris Brown
Ms. Barbara Butterworth
Mr. & Mrs. Ricardo Calderon
Mrs. Ellen Cantor
Mr. & Mrs. Lee Carter
Mr. Alex Cavus
Mr. & Mrs. Jason Chartrand
Mr. Robert Cheek
Mr. & Mrs. Peter Chiu
Ms. Susan Chooljian
Mrs. Gerre Chudacoff
Ms. Heather Churchill
Ms. Shelly Cobb
Mr. & Mrs. George Conomikes
Mr. & Mrs. Kevin Cook
Mr. & Mrs. Glenn Cooper
Mrs. Joanne Coulter
Mrs. Cathy Cuthbert
Ms. Maia Danziger
Ms. Natalie Daoud
Mr. & Mrs. John De Heras
Mrs. Shirley Dettmann
Mrs. Anita Devenis
Mr. & Mrs. Kenneth Dixon
Ms. Kathryn Dole
Ms. Kathleen Dorritie
Mr. & Mrs. Ned Doubleday
Mrs. Debra Dressler
Ms. Sandy Dubin
Mr. & Mrs. Nathaniel Dunn
Mr. Thomas Durkin
Ms. Nancy Ekberg &
Ms. Rose Brooker
Mr. & Mrs. Thomas Eltzroth
Mr. Marshall Engle
Mr. Jim Evans
Ms. Kirsten Everberg
Mr. & Mrs. Bill Ewings
Ms. Carol Fainer
Ms. Monique Fay
Ms. Joan F. Fenzi
Ms. Suzanne Foley & Mr. Peter Sklar
Mr. Peter Frank

Mr. & Mrs. Rich Franklin
Ms. Bernadette Franzel
Dr. & Mrs. Donald B. Freshwater
Ms. Laura Funkhouser &
Mr. Timothy Palf
Ms. Nicole Galliath
Mr. & Mrs. Charles Gilkey
Ms. Rita Gilmore
Mr. & Mrs. Brad Glassman
Mrs. Carolyn Gleisberg
Ms. Niki Glen
Mr. & Mrs. Ron Goldman
Mrs. Martha Greenwald
Mrs. Elizabeth Gruppioni
Mr. & Mrs. Chris Hackleman
Mr. & Mrs. James Haggerty
Ms. Janis Hague
Ms. Lynn Hamilton
Joan Harelik
Mr. & Mrs. Simon Harrison
Mr. Kent W. Hellman
Mr. & Mrs. Russell Hiatt
Ms. Lori Hill
Ms. Sharon Hills
Dr. Charles Hollingsworth
Ms. Jeanette Hosek &
Ms. Marilyn McGregor
Mr. & Mrs. Eugene Humphlett
Mrs. N.H. Hunt
Ms. Junette Hunter
Mr. & Mrs. Mark Hynum
Ms. Lia Benedett Jarrico
Mrs. Gayle Jeffery
Mrs. Karen Jenkins
Miss Lori M. Johnson
Mette Julian
Mr. & Mrs. Paul Kashap
Mrs. Evelyn Kay
Mr. & Mrs. Merlen Kearney
Mrs. Gabrielle B. King
Mr. & Mrs. Ed Kosciński
Ms. Joan Kreiss &
Mr. Roger Perlmutter
Mr. & Mrs. Robert Lawson
Mrs. Mary Lejeune
Ms. Kelly Lennon
Dr. Robert Logan
Ms. Pie Lombardi &
Mr. Scott Hensel
Mrs. Sharron Luft
Mrs. Josh Macaluso
Mrs. Donna Maccarley
Mr. & Mrs. J. Hugh Mackay
Ms. Sharon Maguire &
Mr. Gino Quaranta
Mr. Michael Maloney
Miss Lisa Marie
Ms. Adine Maron
Ms. Cheryl Mason
Ms. Rose Mataja
Mr. & Mrs. McCart
Mrs. Kathie McClure
Ms. Maria McCutchan
Mr. David Byrne McDonald
Mr. & Mrs. Sean McGrath
Ms. Deborah McIntyre
Mr. & Mrs. Doug McKenzie
Mr. & Mrs. Jim McMichael
Mr. & Mrs. Dean Meyers
Mr. & Mrs. James Milchak
Mrs. Sherri Miller
Ms. Rita Mize
Ms. Connie Moreno
Ms. Ekaterina Morozova

Ms. Judy Murphy
Mrs. Donna Musone
Mr. & Mrs. Richard A. Muzzo
Mr. Boris Nadler
Ms. Susan Nemetz De La Lozo
Mr. & Mrs. A. Newell
Mr. & Mrs. Warren Nishimura
Ms. Valerie W. O'Connor
Ms. Marion O'Dare
Ms. Jennifer Pavel
Ms. Annie Peck
Mr. & Mrs. William Pellerin
Mrs. Donal Pender-Sweeney
Ms. Colleen Phelan
Ms. Phelps & Primrose
Ms. Peggy Phillips
Miss Lenore Pierce
Mr. & Mrs. Henry Polakow
Ms. Betty Polston
Mrs. Tina Rappaport
Ms. Joan Roberts
Mr. & Mrs. Kilburn H. Roby
Mrs. Hope Rosen
Ms. Joann Rothman
Mr. Paul Rupp
Mrs. Toni Schinnerer
Mr. & Mrs. Schlomkowitz
Ms. Suzanne Schmid
Mr. & Mrs. Tim Schmidt
Ms. Jean Schulz
Ms. Allison Schwartz
Mr. & Mrs. Rick Seward
Mr. & Mrs. Robert Sewell
Mr. Ronnie Shahbazian
Miss Ji Shin
Mr. & Mrs. Richard Simpson
Ms. Linda Smith
Mr. Alex Soffici
Mr. & Mrs. Chester Specht
Mr. Robert Speer
Ms. Suzanne Speh & John Speh
Mr. Eric Anthony Spieth
Mr. & Mrs. Grant P. Stinchfield
Dr. & Mrs. Richard Tannen
Mrs. Miriam Tasini
Dr. John Tesman
Miss Helen Ann Thomas
Mrs. Linda Thomas
Ms. Nancy Tubiolo
Mr. Tom Tuck
Mr. Randall Vander Mey
Miss Tinh Vuong
Ms. Nell Wade
Miss Madeline J. Walker
Miss Dawn Wasson
Mr. & Mrs. Roy Webb
Mr. & Mrs. Lou Weider
Mrs. Ruth Weikel
Ms. Tessa Wilcox
Ms. Diane Wollenberg
Mrs. Geraldine H. Woods
Mr. & Mrs. George Writer
Mr. George Yatchisin &
Ms. Amy Esau
Mr. Kelly Yturraide
Mr. Mohamed Zak
Ms. Sally Ziegler
Ms. Lisha Zindrick
Ms. Lee Zoppa

LEVEL II

Ms. Margaret Baker
Ms. Nancy Barasch
Mr. & Mrs. Adam Bianchi II

Ms. Nancy B. Brock
Mr. & Mrs. Frank Burgess
Mr. & Mrs. John Calene
Miss Morgan Coffey
Mr. & Mrs. William Crawford
Mr. James Crowder
Mr. & Mrs. Guy De Mangeon
Mrs. June Brenton Fisher
Mr. Dominick Fiume
Ms. Helen Gillespie
Ms. Kerri Green &
Mr. Brian Gregory
Mr. & Mrs. Michael Hamman
Mr. & Mrs. Peter L. Harvie
Mr. & Mrs. Steven Hill
Mr. & Mrs. Ron Iltis
Mr. & Mrs. Brad Jendersee
Mr. & Mrs. Aaron Landworth
Mr. & Mrs. Paul Liang
Ms. Laurel S. Luby &
Mr. Thomas C. Belar
Mr. Craig Marks
Mr. & Mrs. Edwin Martin
Ms. Diana Miller
Ms. Shawn Miller
Mr. & Mrs. Thomas P. Mullaney
Lil & Stan Nelson
Mrs. Jana Ortega
Ms. Barbara J. Ross
Mrs. Jan Marie Silk
Mr. & Mrs. James Sloss
Mr. & Mrs. Julian M. Smith
Mrs. Joyce Tamborello
Ms. Gail Tennen &
Ms. Sylvia Camiel
Ms. Allison Thomas &
Mr. Gary Ross
Dr. & Mrs. Edward L. Thompson
Ms. Cynthia Thurber
Mrs. Carol Trotter
Ms. Joann Uttal
Mr. & Mrs. Joel Van Diver
Ms. Maria Ward
Ms. Kelly Welch
Ms. Susan Wilson &
Mr. Henry Babcock
Dr. Elizabeth Zelinski

LEVEL III

Mr. & Mrs. Peter Burgess
Dr. & Mrs. Ernest H. Drew
Mr. Hans Dus
Mr. & Mrs. George R. Guffey
Mr. Michael Haskell
Mr. Scott Hogue
Ms. Bea Hyp-Summerhill Antiques
Mrs. Herbert D. Ivey Jr.
Mr. Craig Joujon-Roche
Mr. & Mrs. David K. Simpson
Mr. Thomas Van Stein
Mr. & Mrs. Gary Winnick

LEVEL IV

Elie & Susan Genadry
Mrs. Kimberly C. Klein
Mr. & Mrs. Thomas B. Mackey
Mrs. Yolanda Overbach
Mr. & Mrs. Bryson S. Randolph
Ms. Susan Tai & Mr. David Wong
Mr. & Mrs. Dave Williams

GARDEN PATRON (LEVEL V)

Mr. & Mrs. Michael Hurley

The Cycads

PRESENTATION, RECEPTION
AND BOOK SIGNING
with LORAN WHITELOCK

November 16, 2002 • 2:00 PM

GATES OPEN AT 1:00 PM

\$35/members • \$40/nonmembers

- ☐ I plan to purchase *The Cycads* for the special rate of \$55 at the event. (If you check this box, please return this registration form no later than October 1st.)

Number of people attending _____

Number of cars _____

Ganna Walska Lotusland Registration Form

PAYMENT METHOD: ☐ Check enclosed ☐ VISA ☐ MasterCard

Card number _____ Expiration date _____

Signature _____

Member name _____

Address _____ Phone _____

*One member pass may be used as partial payment for any event.
Fees are refundable only if cancellation is received one week before class or lecture.
If minimum enrollment is not reached, classes and lectures may be canceled.
No phone reservations, please.*

Mail to: Ganna Walska Lotusland
Attn: Member Events, 695 Ashley Road, Santa Barbara, CA 93108

Members Who Have Increased Their Level of Support

May, June, and July 2002

LEVEL II

Ms. Sally Bartels
Mrs. Barbara Mann Bauer
Mr. & Mrs. Michael Champion
Mr. & Mrs. William Daugherty
Mr. & Mrs. Frederick Dupree
Ms. Candace Fair
Ms. Kyle Futo
Ms. Mary E. Hagar
Ms. Holli Harmon
Ms. Tina Hasche
Ms. Mary Henson
Mr. & Mrs. William Jacks
Mr. & Mrs. John C. Kinnear III
Ms. Miriam Lendaris
Mr. & Mrs. Maurice Charles Lucky
Mrs. Della McCord
Mr. Duke McPherson
Mr. & Mrs. Stephen T.B. Miller
Mr. & Mrs. William Murdoch
Ms. Lori Ann Pearson
Lynne & Gary Scott
Mr. & Mrs. Charles Shemely
Mr. Brian Thornhill
Dr. & Mrs. David Van Every

LEVEL III

Mr. & Mrs. Barton Clemens
Mr. & Mrs. John Fellowes
Mr. & Mrs. Michael Krantz
Mr. & Mrs. James C. Nonn
Ms. Carole MacElhenny

LEVEL IV

Ms. Eunice S. Butler
Mr. & Mrs. John Cleese
Mr. & Mrs. Byron Wood

GARDEN BENEFACTOR (LEVEL VI)

Mr. & Mrs. Thomas Crawford, Jr.

Lotusland Gratefully Acknowledges Donations May, June, and July 2002

GENERAL

Mr. & Mrs. Jerry Beaver
Ms. Barbara Bertram
Mr. Richard Buchen
California Association of Nurserymen,
Channel Islands Chapter,
Martin Senn
Mr. Richard Faggioli
Mr. & Mrs. John Hancock
Mr. & Mrs. Tim Koster
Blair & Bill Lawlor
Mrs. Keith Marston
Mr. Robert Michelsen
Mr. & Mrs. James Nonn
Ms. June H. Schuerch
Mr. & Mrs. Clifford Wright, Jr.
Mr. & Mrs. Norman Zemel

GRANTS

CYCAD GARDEN RENOVATION

The Andrew H. Burnett Foundation

MAIN HOUSE REFURBISHING

William E. Weiss Foundation, Inc.

TOPIARY GARDEN

Michael J. Connell Foundation

AQUATIC GARDEN LECTURE SERIES SPONSOR

Mr. & Mrs. William Nicholson

THE LOTUS SOCIETY RECOGNITION EVENT SPONSOR

The Robert & Christine Emmons
Foundation

IN-KIND DONATIONS

APPRAISAL OF DUNLAP CACTI COLLECTION

John Trager

PLANTS

Mr. Maurice Levin

EVENT SUPPORT

I.D.O. Events, Tamara Feller

MAY FUNDRAISING EVENT

Paul Arpin Van Lines
Hans Dus Blacksmith
Mr. & Mrs. Scott Brittingham
Mr. & Mrs. Monte Brown
Michael Haskell
Scott Hogue
Craig Joujon-Roche
Summerhill Antiques

HONORING

Mrs. Miriam Goodman
honoring docent Nancy Wood

DUNLAP COLLECTION

Mr. Dominick Fiume

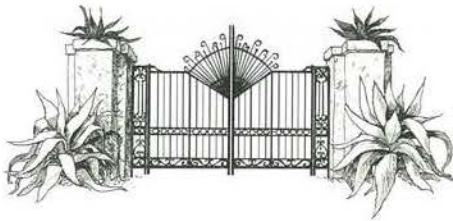
MEMORIAM

Maggie, Paul & Nora Desruisseaux
in memory of
Miriam Vermeiren

Ganna Walska Lotusland Foundation

695 Ashley Road
Santa Barbara, CA 93108
Address Service Requested

Nonprofit Org.
U.S. POSTAGE
PAID
Santa Barbara
California
Permit No. 163



2002 Member Events

September through December

MANY LOTUSLAND EVENTS are open to non-members, so please let your friends and neighbors know about the great activities we offer. Children are welcome at many events, and Family Tour Days have been expanded to include every Thursday and the second Saturday of each month (see the last item in the listing). We hope you continue to enjoy the year 2002 at Lotusland.

Saturday, October 12

*Upper Level Member
Cocktail Party and Lecture
Sex in Your Garden!*

Featuring the popular, entertaining and informative author and lecturer Angela Overy
Illustrated Lecture at 3:00 PM
Cocktail Party and Book Signing 4:00–6:00 PM

Invitations will be mailed to our upper-level members (Level III and above) as a thank you for their increased support. This is one you won't want to miss!

November 15

Garden is closed to regular tours until February 19.

Saturday, November 16

*The Cycads
Presentation, Reception,
and Book Signing*

2:00 PM (GATES OPEN AT 1:00 PM)
Loran Whitelock has spent decades studying cycads in their natural habitats around the world, and his book *The Cycads* is the book cycad enthusiasts have been waiting for. Mr. Whitelock will regale us with stories about his exciting cycad expeditions to exotic locales throughout the world and will be available to autograph *The Cycads* for his appreciative audience. Please use the coupon on page 15 to sign up and to reserve a copy of *The Cycads*.

Saturday, December 7

*Holiday Shopping and
Self-Guided Tours*

1:30–4:30 PM
Members \$15 or use free admission pass; nonmembers \$20. Beginning October 1, call 969-9990 for reservations 9 AM–NOON, M-F.

Family Tours

Family tours for all ages are now offered every Thursday at 10 AM and 1:30 PM and the second Saturday of each month at 10 AM and 1:30 PM (except between November 15 and February 19). Family tours are child and parent friendly and are separate from regular adult tours. Adult Members \$15 or use admission passes; children under ten \$8; children under two free. Call 969-9990 for reservations 9 AM–NOON, M-F.



Mark your
August 2003 calendar
for a trip to Santa Fe
for private garden visits
and the opera.